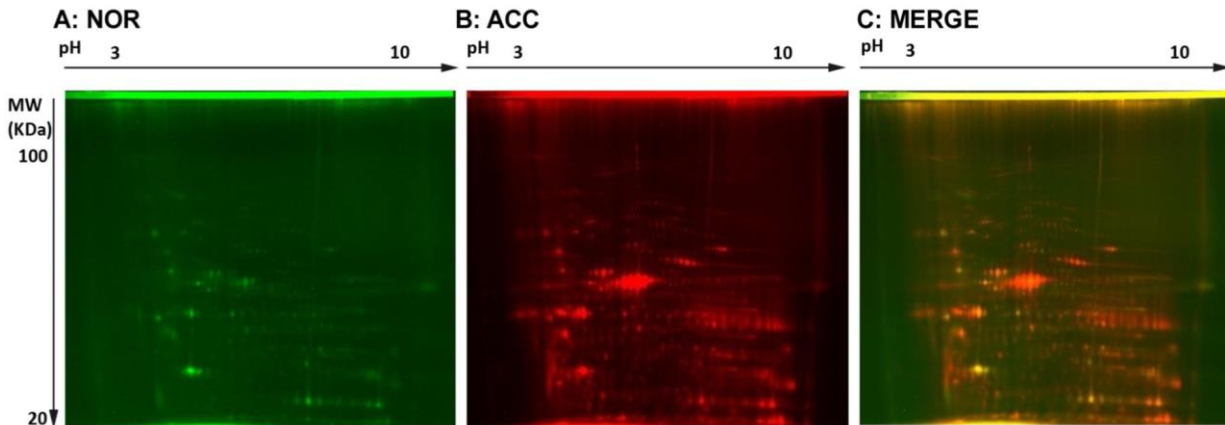


## 2D-DIGE proteomic analysis identifies new potential therapeutic targets for adrenocortical carcinoma

### Supplementary Material



**Suppl. Fig.1: Protein Expression Profiling in 2D-DIGE.** Representative gel image of proteins differentially expressed in normal adrenal tissue (A, NOR) and ACC (B, ACC). (C) Overlay image of the 2 fluorochromes (MERGE). Proteins extracted from tissue specimens were labeled with the fluorescent dyes Cy3 and Cy5, and separated by 2D-DIGE. IPG strips (3-10 pi) were used for IEF prior to standard SDS-PAGE (12 % polyacrylamide) for the second dimension. Molecular weight (MW) in kilo Daltons (kDa) are indicated to the left of the blots and the pH gradient to the top.