

Supplement Figure S1

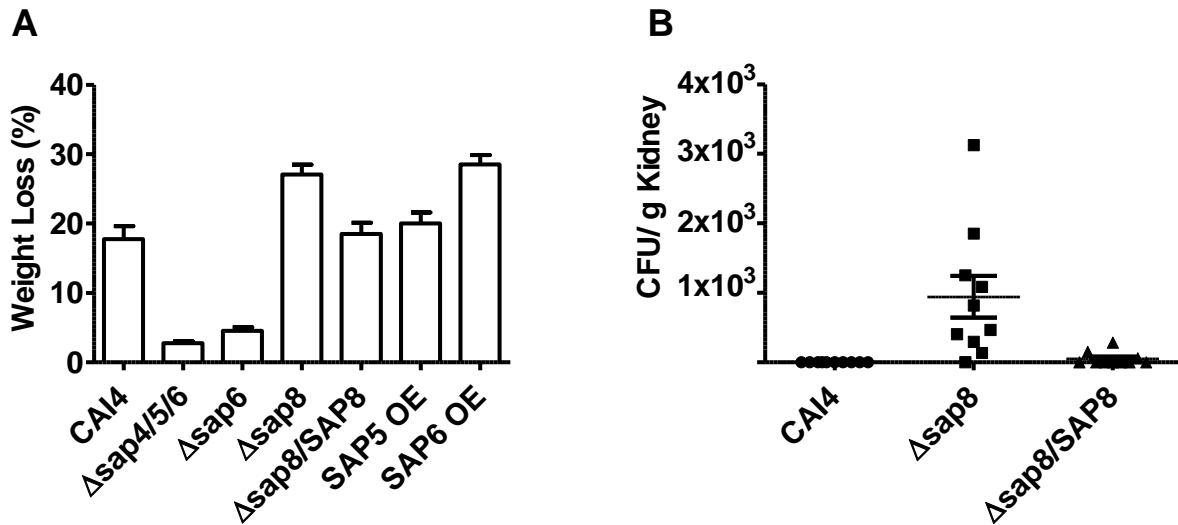


Figure S1. A) Average weight loss (using at least 10 mice per group) five days after *C. albicans* oral infection is shown as percentage change in mouse weight from one day before infection. Weight loss in mice after oral infection with $\Delta sap8$ and *SAP6 OE* was significantly greater ($P < 0.05$) than *CAI4* WT, while infection with $\Delta sap6$ and $\Delta sap4/5/6$ resulted in significantly less weight loss ($P < 0.05$) than WT. Mice infected with the complemented strain $\Delta sap8/SAP8$ and *SAP5 OE* had similar weight loss as WT. B) Mice orally infected with $\Delta sap8$ had kidney dissemination five days after infection (1×10^3 CFU/ g kidney tissue), that was not found following infection with the complemented $\Delta sap8/SAP8$ or WT strains.

Supplemental Figure S2

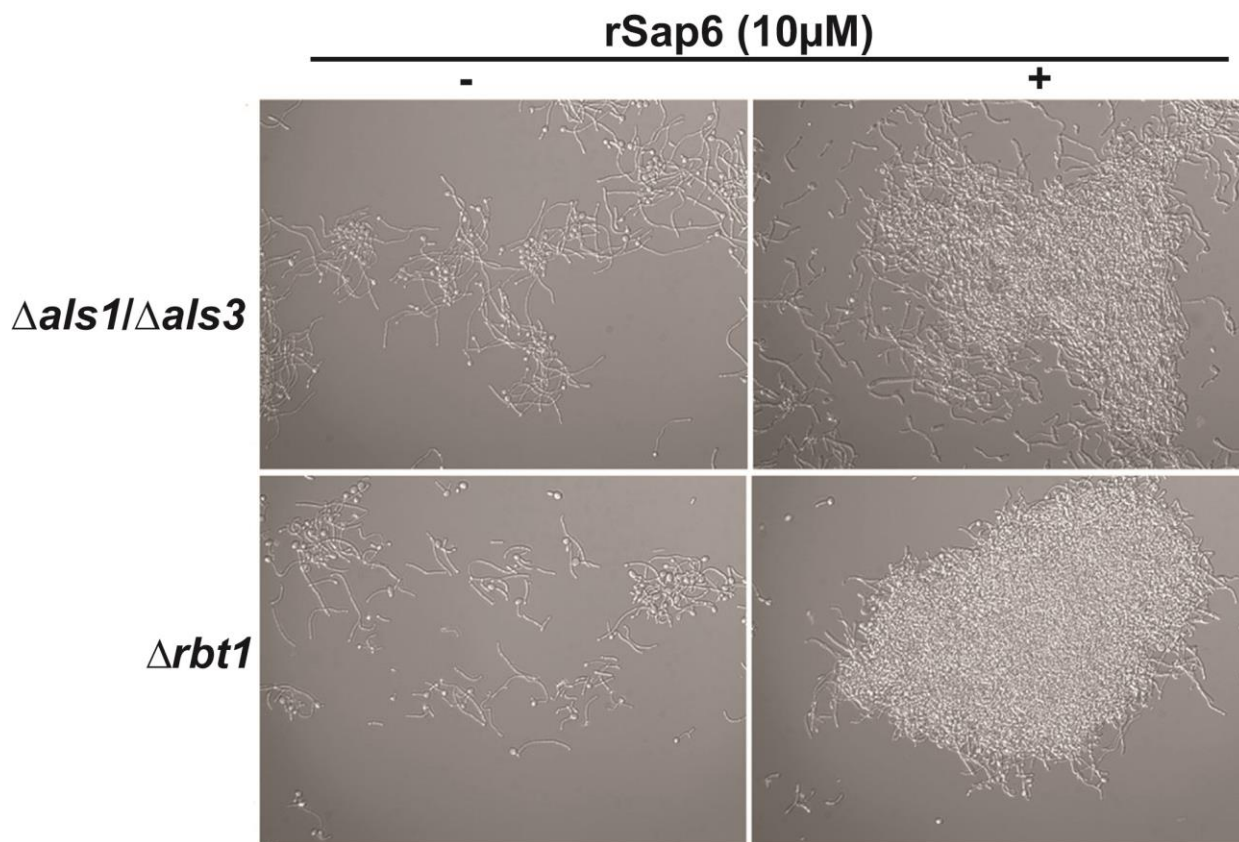


Figure S2. *C. albicans* hyphal specific adhesins Als and Rbt1 are not required for Sap6 mediated cellular aggregation. Germinated cells of *C. albicans* $\Delta als1/\Delta als3$ or *C. albicans* $\Delta rbt1$ were incubated with rSap6 (10μM). Sap6 induced aggregation in both mutant strains similarly to *CAI4*.