

Supplementary Materials

**First detection of AmpC β -lactamase *bla*_{CMY-2} on a conjugative IncA/C plasmid in
Vibrio parahaemolyticus of food origin**

Ruichao Li, Dachuan Lin, Kaichao Chen, Marcus Ho Yin Wong, Sheng Chen*

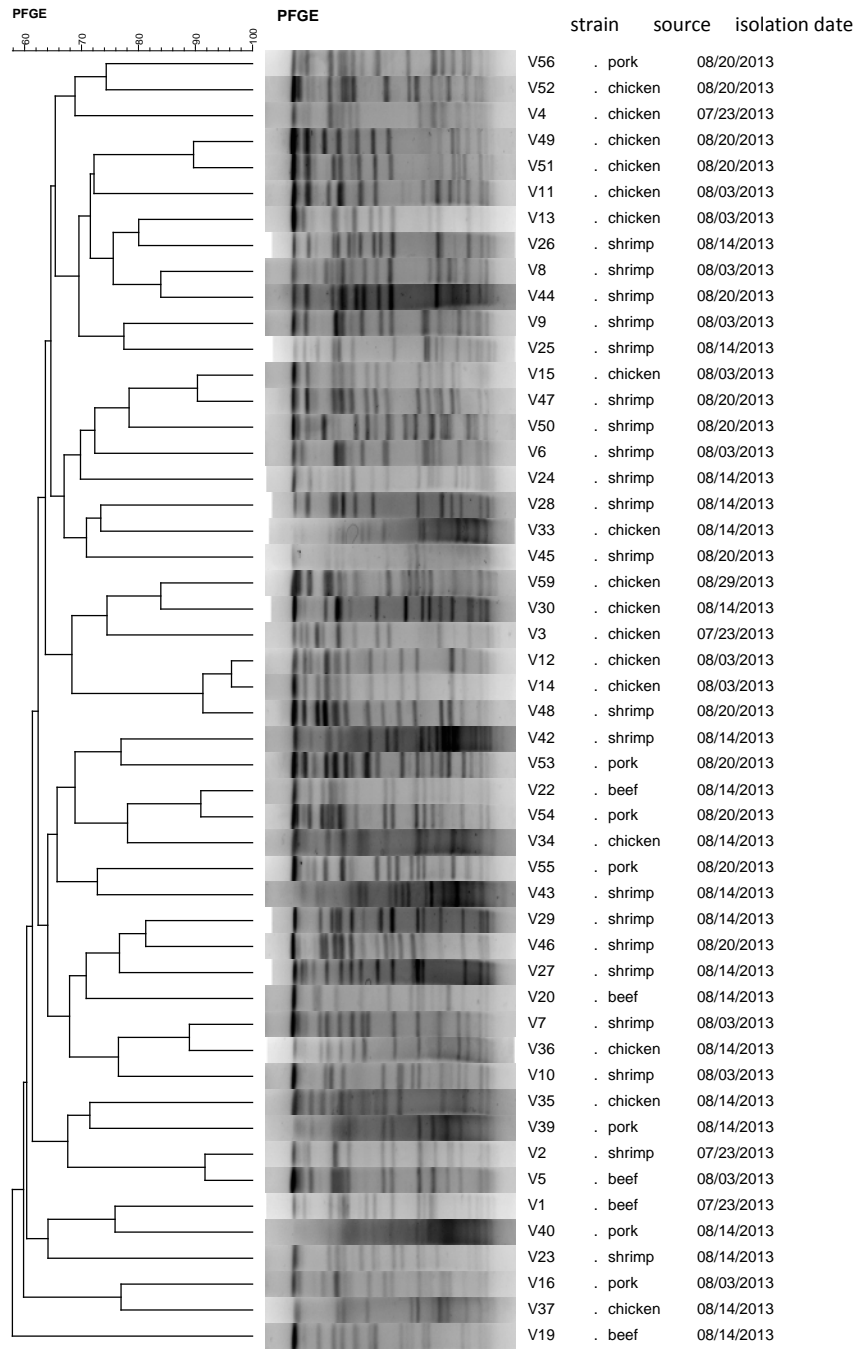


Figure S1. PFGE dendrogram of 49 food *V. parahaemolyticus* isolates analyzed by Bionumerics software after NotI digestion (5 out of 54 isolates were untypable).

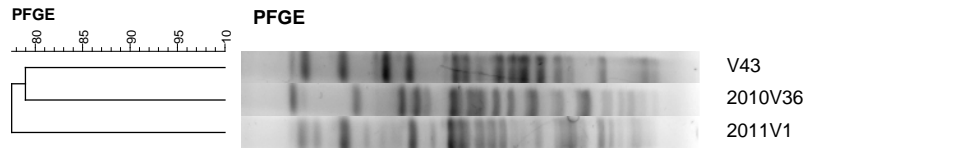


Figure S2. UPGMA analysis of PFGE profiles of three *bla*_{PER-1} positive *Vibrio parahaemolyticus* digested with SfiI.