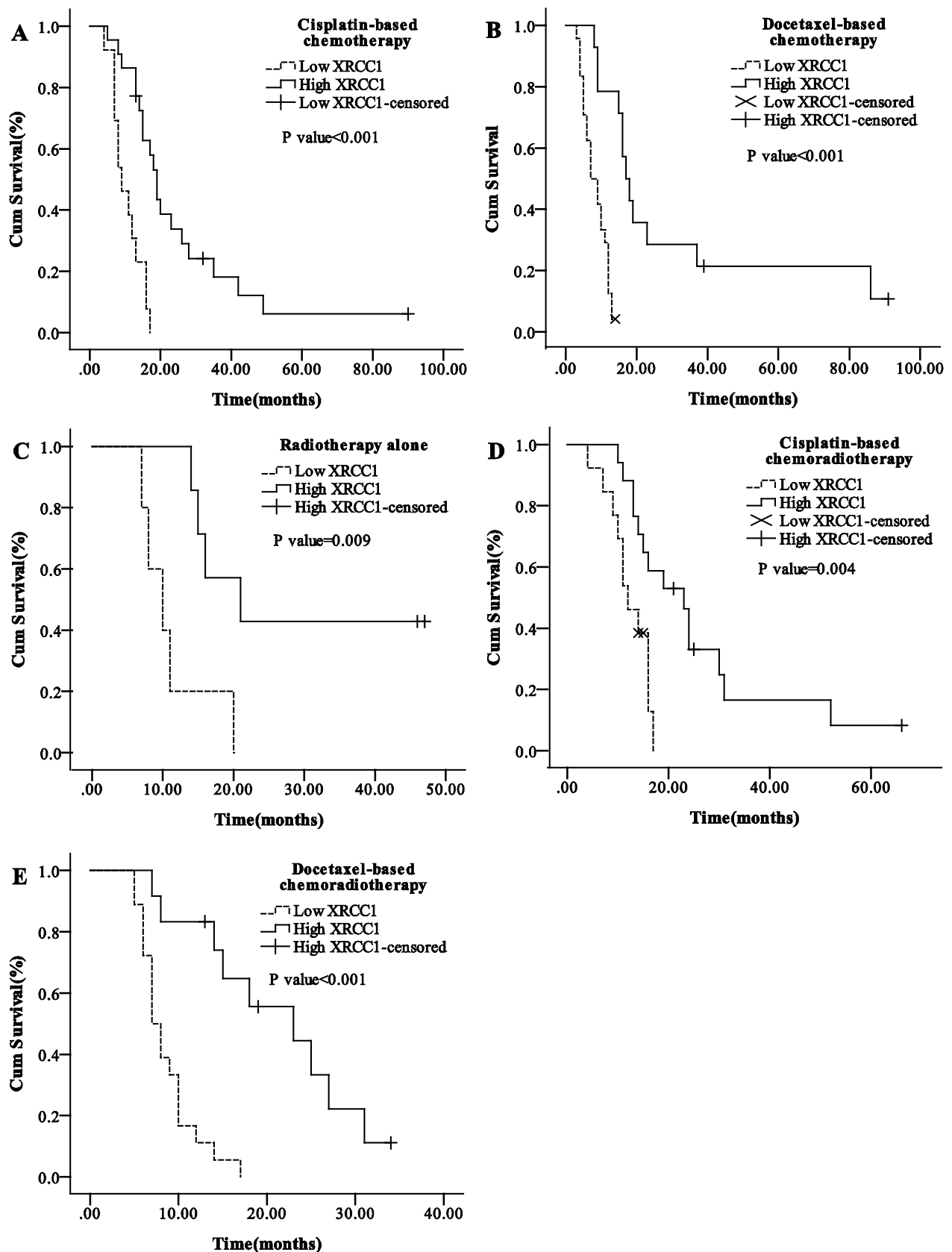
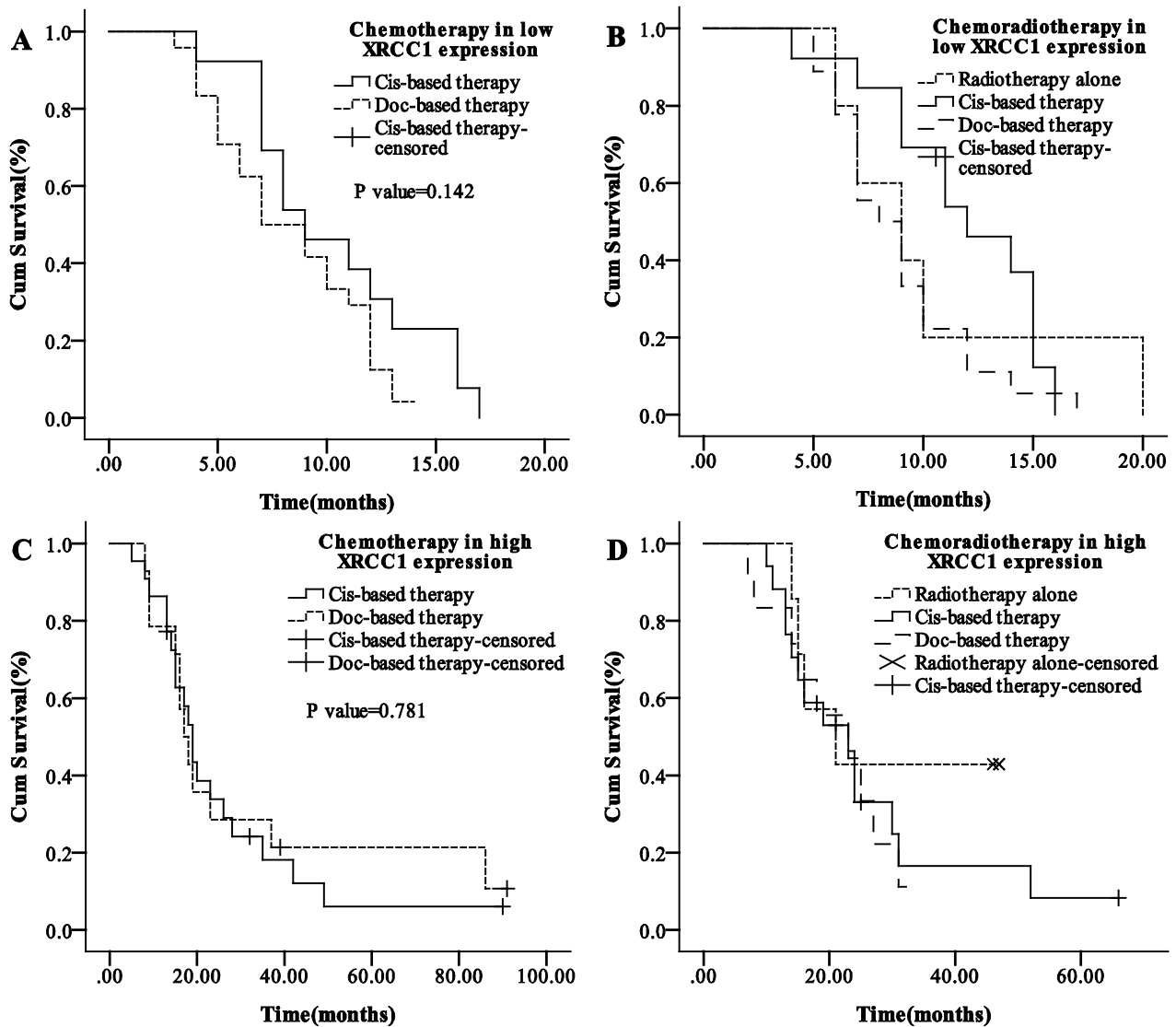


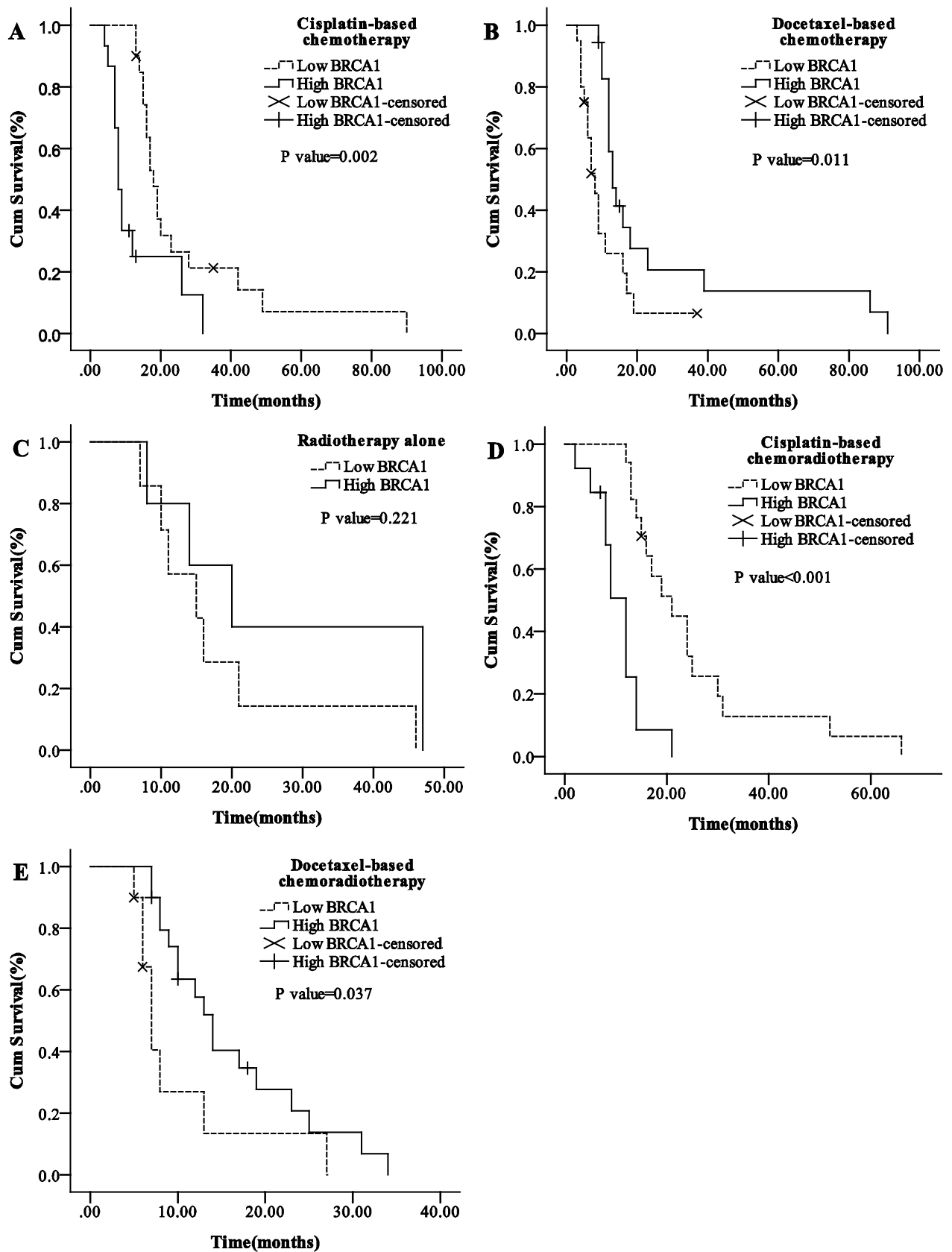
Additional file 1: Figure S1 Median OS according to JWA mRNA expression in different therapeutic subgroups. (A) Cisplatin/5-Fu-based chemotherapy. (B) Docetaxel/5-Fu-based chemotherapy. (C) Radiotherapy alone. (D) Cisplatin/5-Fu-based chemoradiotherapy. (E) Docetaxel/5-Fu-based chemoradiotherapy.



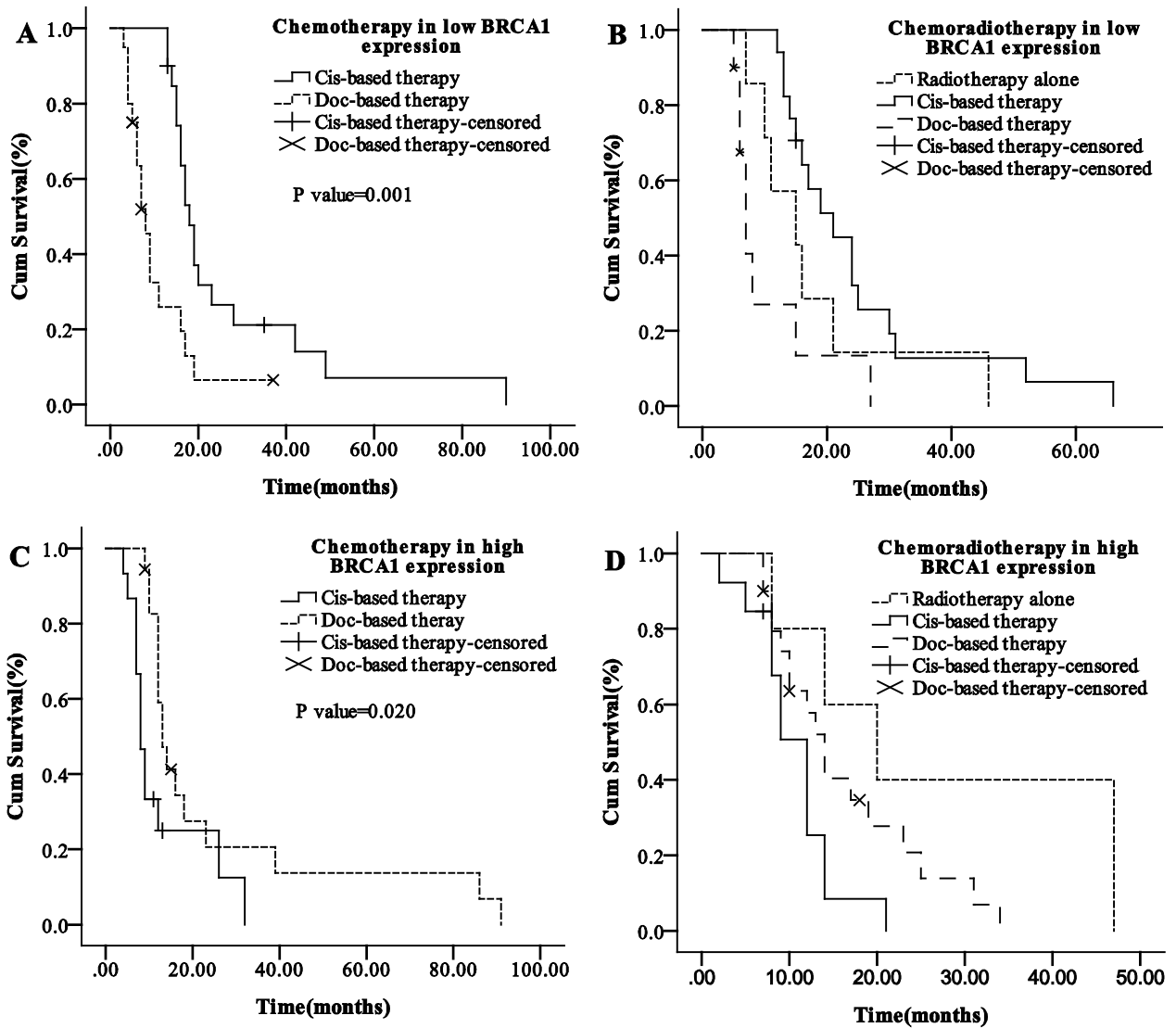
Additional file 1: Figure S2 Median OS according to XRCC1 mRNA expression in different therapeutic subgroups. (A) Cisplatin/5-Fu-based chemotherapy. (B) Docetaxel/5-Fu-based chemotherapy. (C) Radiotherapy alone. (D) Cisplatin/5-Fu-based chemoradiotherapy. (E) Docetaxel/5-Fu-based chemoradiotherapy.



Additional file 1: Figure S3 Median OS in low and high XRCC1 expression levels according to different therapeutic regimens. (A) Chemotherapy in low XRCC1 expression. (B) Chemoradiotherapy in low XRCC1 expression. (C) Chemotherapy in high XRCC1 expression. (D) Chemoradiotherapy in high XRCC1 expression.



Additional file 1: Figure S4 Median OS according to BRCA1 mRNA expression in different therapeutic subgroups. (A) Cisplatin/5-Fu-based chemotherapy. (B) Docetaxel/5-Fu-based chemotherapy. (C) Radiotherapy alone. (D) Cisplatin/5-Fu-based chemoradiotherapy. (E) Docetaxel/5-Fu-based chemoradiotherapy.



Additional file 1: Figure S5 Median OS in low and high BRCA1 expression levels according to different therapeutic regimens. (A) Chemotherapy in low BRCA1 expression. (B) Chemoradiotherapy in low BRCA1 expression. (C) Chemotherapy in high BRCA1 expression. (D) Chemoradiotherapy in high BRCA1 expression.