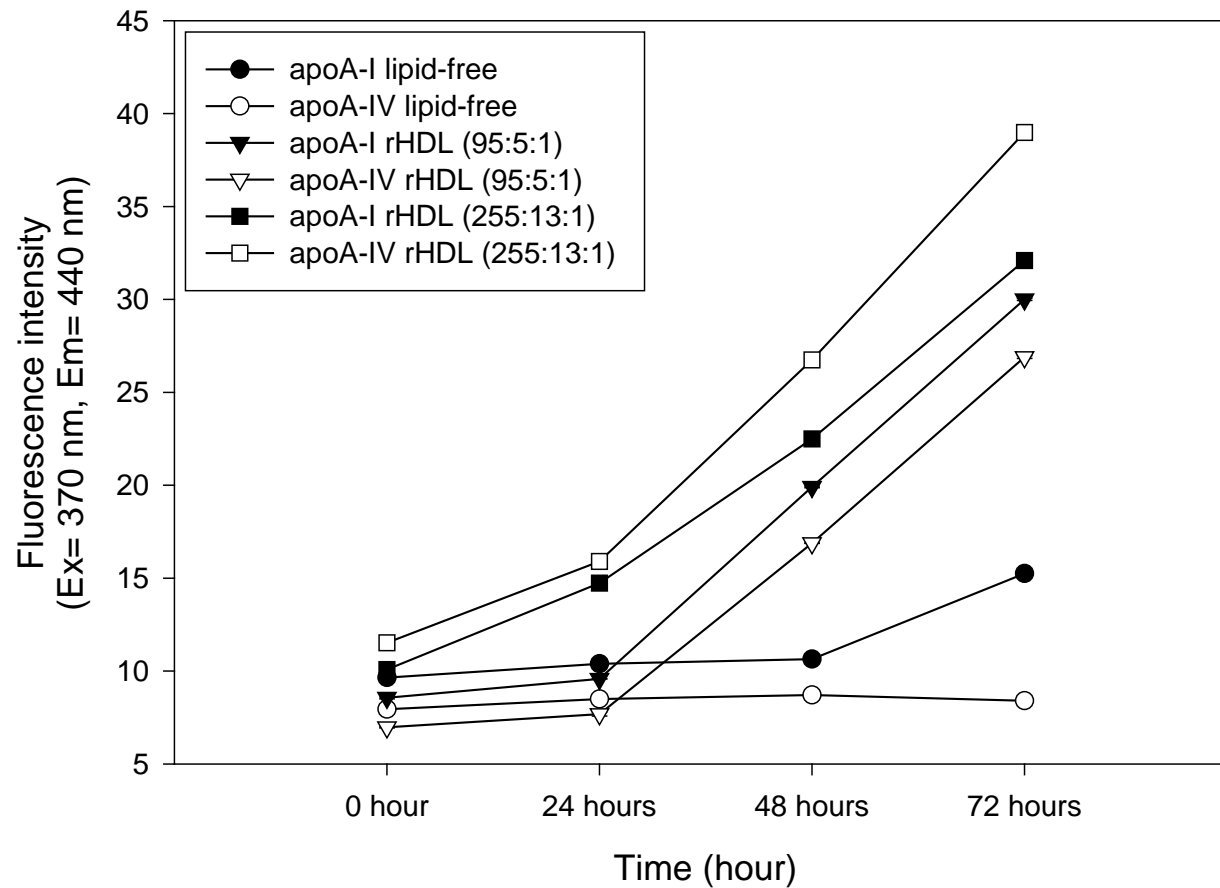


Suppl. Fig. 1

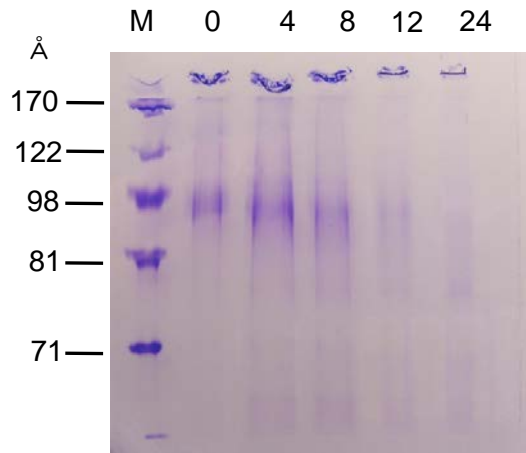


Determination of extent of glycation in a time-dependent manner for 72 hr in lipid-free and lipid bound states.

Fluoroscopic determination (Ex=370 nm, Em=440 nm) with the same amount of protein (1.2 mg/mL) and fructose (final concentration, 5 mM).

A

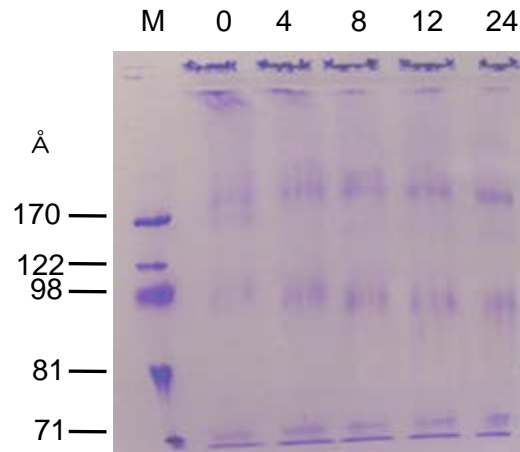
apoA-I rHDL + LDL



8-25% Native-PAGGE

B

apoA-I rHDL + LDL



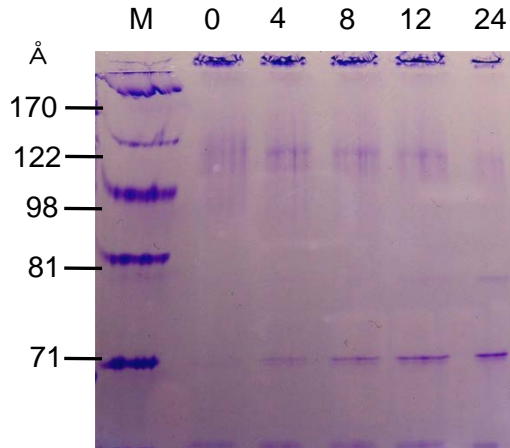
4-15% Native-PAGGE

Suppl Fig. 2

Particle size rearrangement patterns of POPC-rHDL in the presence of LDL (8-25% native GGE). The reaction was initiated by adding 100 mg of human LDL (apo-B) to 100 mg of rHDL at 37°C. Aliquots of the incubation mixture were collected at designated time intervals and stored at 4°C until electrophoresis. Lane M, HMW size marker, and incubation time is indicated at top of each lane. Protein bands were visualized by Coomassie Blue staining.

C

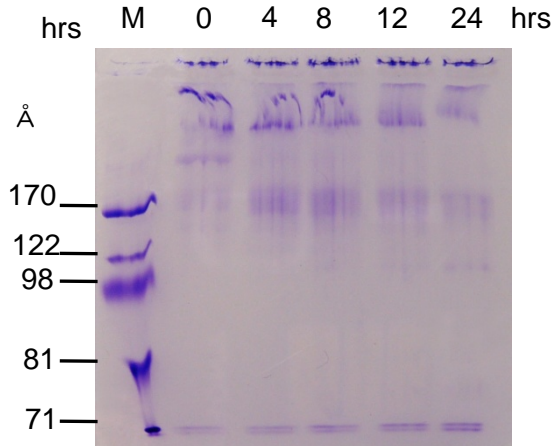
apoA-IV rHDL + LDL



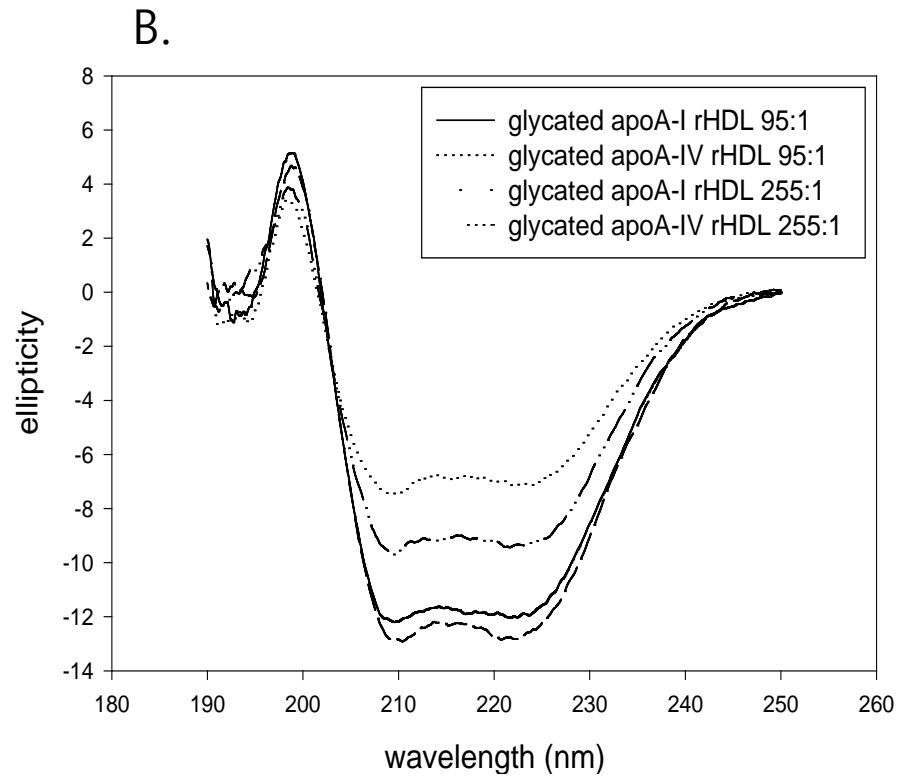
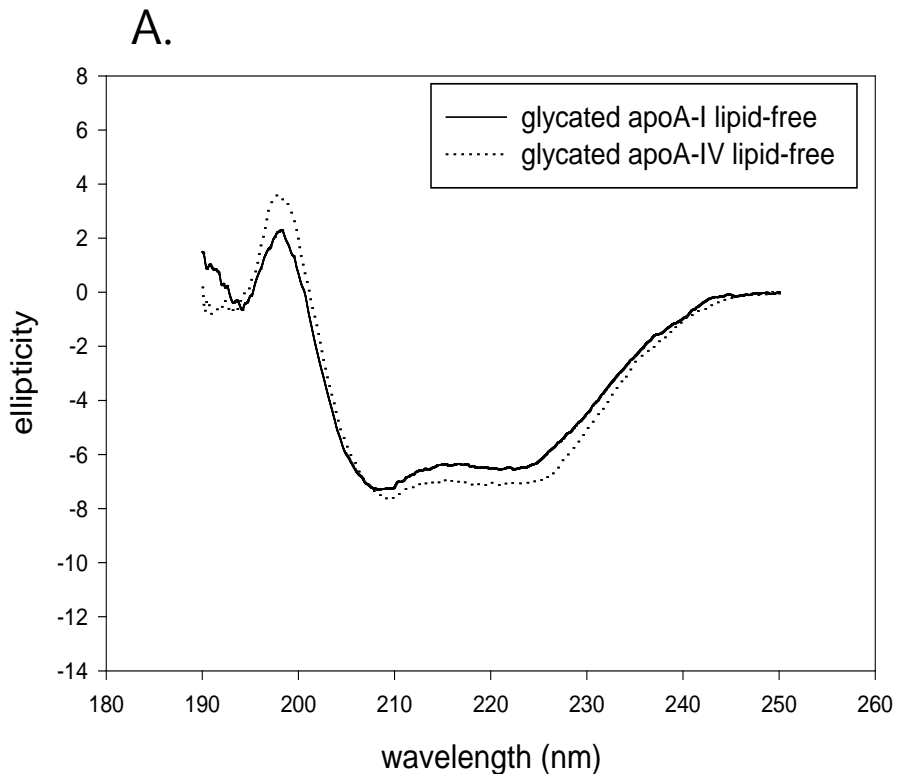
8-25% Native-PAGGE

D

apoA-IV rHDL + LDL



4-15% Native-PAGGE



Circular dichroic spectra of apoA-I and apoA-IV under glycosylated state