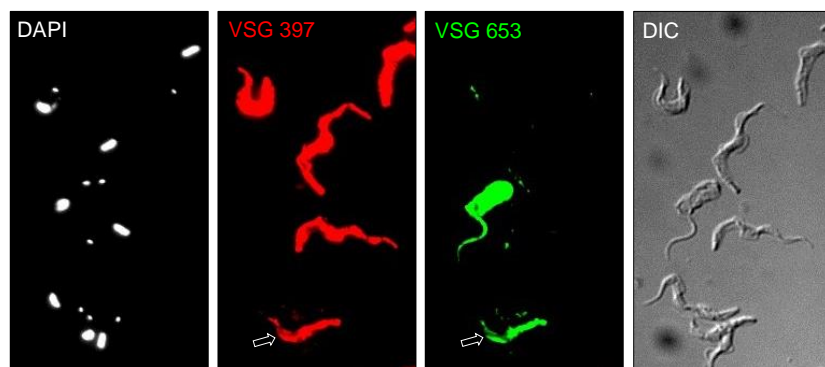


Supplementary Figure S1

VSG 397 (A) and VSG 653 (B) expression detected by IF assay performed with cultures induced to express RBP6 on the indicated days of the time course. The percentages of cells positive for mVSG expression are indicated on the right. Note that they are much lower than the percentages shown on the graph in Fig. 1A, because MF cells have VSG coats and similarly to BF cells they do not adhere well to glass surfaces.



Supplementary Figure S2

A single double mVSG expressor cell (out of 400 cells), positive for both VSG 397 and VSG 653. The description of the IF assay is provided in the legend for Fig. 2.