

Figure S1: (A) HPLC chromatography of PSMA-1. PSMA-1 has a retention time at 18.6 min. (B) MALDI-TOF mass spectrum of PSMA-1 with $M+1=1087.5$.

Figure S2: (A) HPLC chromatography of PSMA-1-IR800. PSMA-1-IR800 has a retention time at 23.4 min. (B) MALDI-TOF mass spectrum of PSMA-1-IR800, which shows $M+1=2071.8$.

Figure S3: (A) HPLC chromatography of PSMA-1-Cy5.5. PSMA-1-Cy5.5 has a retention time at 39.4 min. (B) MALDI-TOF mass spectrum of PSMA-1-Cy5.5, which shows $M+1=1651.7$.

Figure S4: Comparison of the quantification of PC3pip tumor uptake of PSMA-1-IR800 and PSMA-1-Cy5.5 as determined by FMT. The amount of PSMA-1-IR800 in PC3pip reached a maximum at 4 hours post injection, then dropped gradually. The amount of PSMA-1-Cy5.5 reached highest at 24 hours post injection, then remained constant.

Figure S1

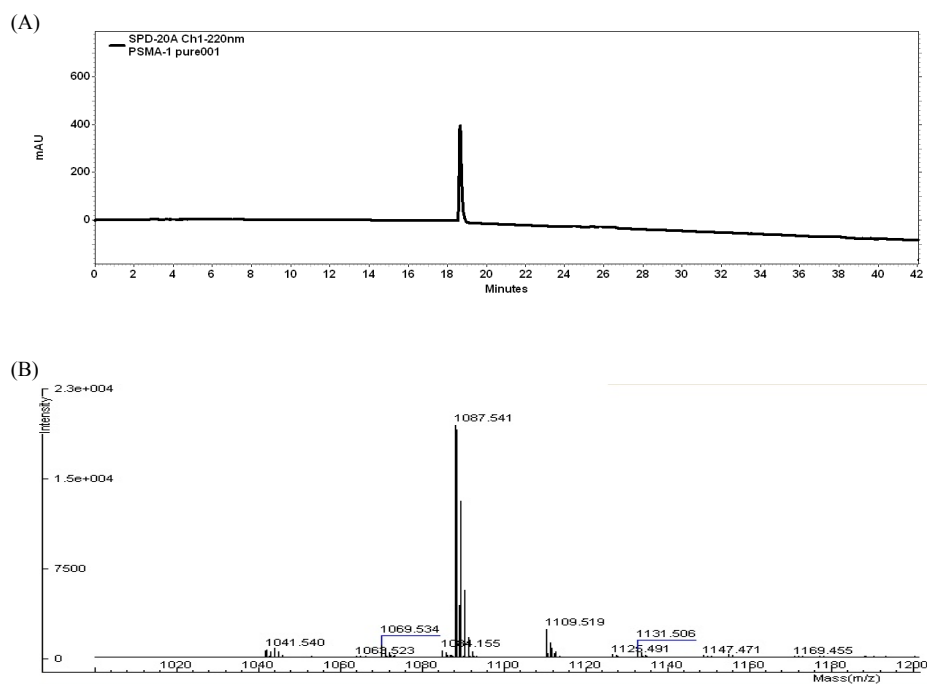


Figure S2

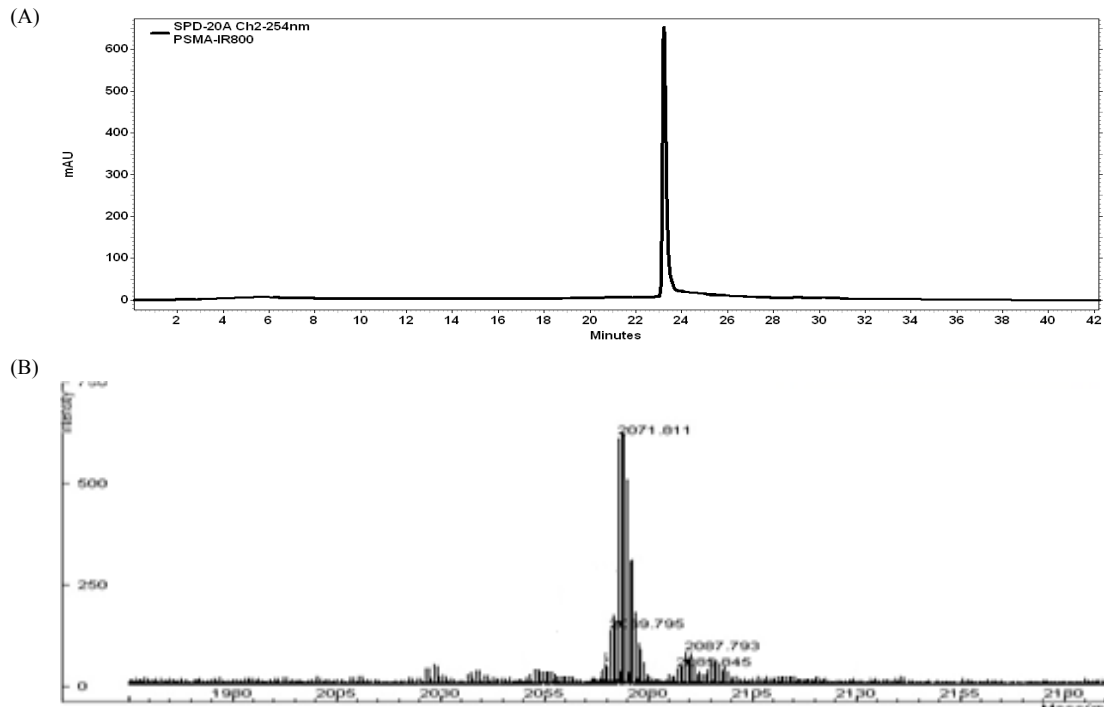


Figure S3

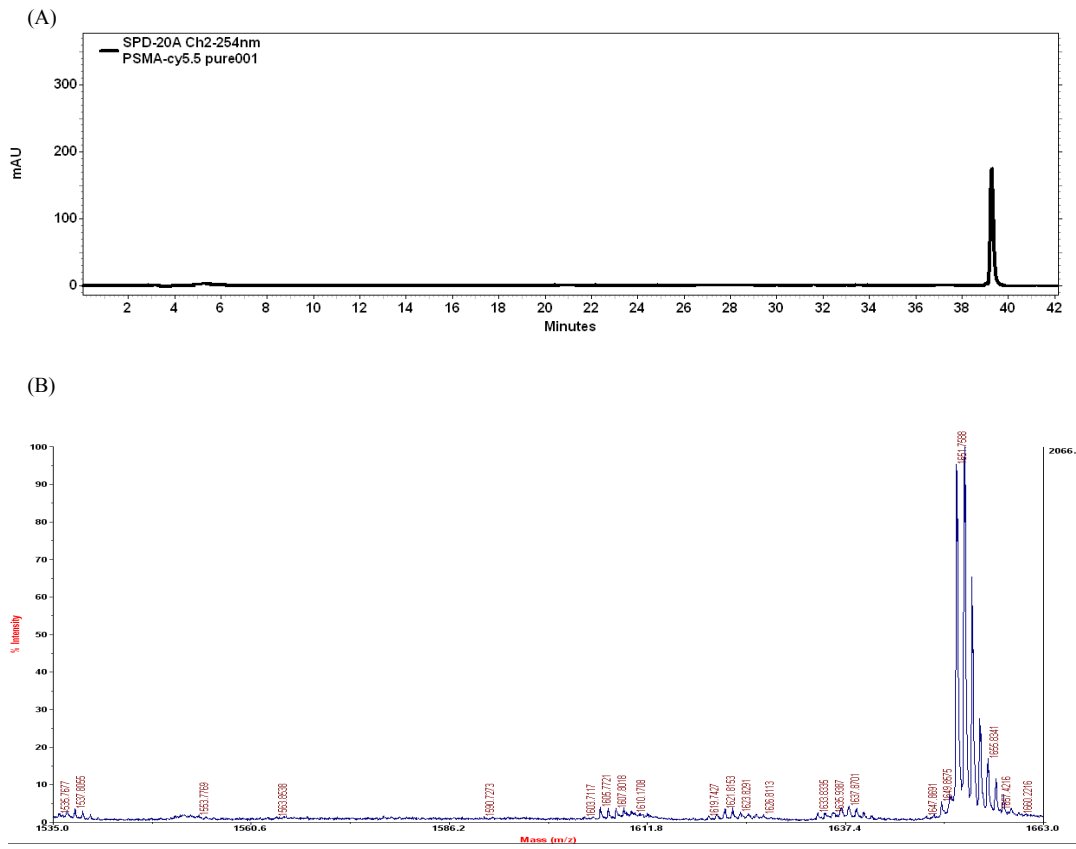


Figure S4

