

ALDH1A1 predicts prognosis in glioma

Table S1. The sequence of primers, product size and annealing temperature of qRT-PCR

No.	Methods	Gene	Primer Sequence (5'→3')	Product Length	TM °C
1	Real-time RT-PCR	GAPDH	F: TGTCGTCATGGGTGTGAACC R: ATGGACTGTGGTCATGAGTCC	149	57
2	Real-time RT-PCR	MMP2	F: CCACTGCCTTCGATACAC R: GAGCCACTCTCTGGAATCTTAAA	157	58
3	Real-time RT-PCR	MMP7	F: GAGTGAGCTACAGTGGGAACA R: CTATGACGCGGAGTTTAACAT	176	61
4	Real-time RT-PCR	MMP9	F: GTTCCCGAGTGAGTTGA R: TTTACATGGCACTGCCAAAGC	168	59
5	Real-time RT-PCR	ALDH1A1	F: CCGTGGCGTACTATGGATGC R: CGCAATGTTTTGATGCAGCCT	167	62
6	Real-time RT-PCR	ALDH1A2	F: TTGCCAGGATATGGGCCAAC R: TGAATGCAATCTGTCTATGCCA	70	60
7	Real-time RT-PCR	ALDH1A3	F: GCCCTGGAGACGATGGATAC R: CCCTGGATTTGTCTGCC	113	60
8	Real-time RT-PCR	ALDH1B1	F: TACCACCGGGGAGGTCATT R: ATCCCGCTCCACTAGGTCTG	169	62
9	Real-time RT-PCR	ALDH1L1	F: GTTTGCAGAGCTGACATTAAGG R: GATTTTCTCACATCAGGATGGT	115	60
10	Real-time RT-PCR	ALDH1L2	F: TAGTCCAAAGCACGGCTCTAT R: GGTCTGTATCCAAGCCATCA	147	61
11	Real-time RT-PCR	ALDH2	F: AAATGTCTCCGGTATTATGCCG R: CATCAGGAGCGGAAATCCA	144	61
12	Real-time RT-PCR	ALDH3A1	F: TGTTCTCCAGCAACGACAAGG R: AGGGCAGAGGTGCAAGGT	108	62
13	Real-time RT-PCR	ALDH3A2	F: CTCCCTCAGTATTAGACCAGGA R: CCCTCCAGTCAAGAGTCAC	180	60
14	Real-time RT-PCR	ALDH3B1	F: AAGCCATCGGAGATTAGCAAGA R: GCTCTGGTCCACGTATTGGG	72	61
15	Real-time RT-PCR	ALDH3B2	F: TCATCGCACCTGGAACACTAC R: CTGGCTGATTTCTGACGGCT	104	61
16	Real-time RT-PCR	ALDH4A1	F: TCTGTTATGCAGACAAGAGCCT R: GATCACGGTCTTACCCTGTCC	188	61
17	Real-time RT-PCR	ALDH5A1	F: GACCTTGCCAGAATAATCACAGC R: GGGTGTGGATAATGTCTCCGT	136	61
18	Real-time RT-PCR	ALDH6A1	F: TTCAGTGCCAACTGTAAAGCTC R: TGAGGGACCCGACCAATGA	114	61
19	Real-time RT-PCR	ALDH7A1	F: TATTGCCCTGCTAACACGAG R: GCATCGCCAATCTGTCTTACT	155	60
20	Real-time RT-PCR	ALDH8A1	F: ATGGCTGGAACAAACGCACT R: CCCTGTTGATGGGTCGTAAGAA	99	62
21	Real-time RT-PCR	ALDH9A1	F: GTCGCAGCCGCTCAATTAC R: CCTTTGCATTTTGAACAGCCAA	155	61
22	Real-time RT-PCR	ALDH16A1	F: CAGACGGGCTGTATGAGTATCT R: ATGGAGTTGCCAGACGAATC	233	61
23	Real-time RT-PCR	ALDH18A1	F: GCCCTTCAACCAACATCTTCT R: AGGGGTACAGTGATAAACGGG	126	60

ALDH1A1 predicts prognosis in glioma

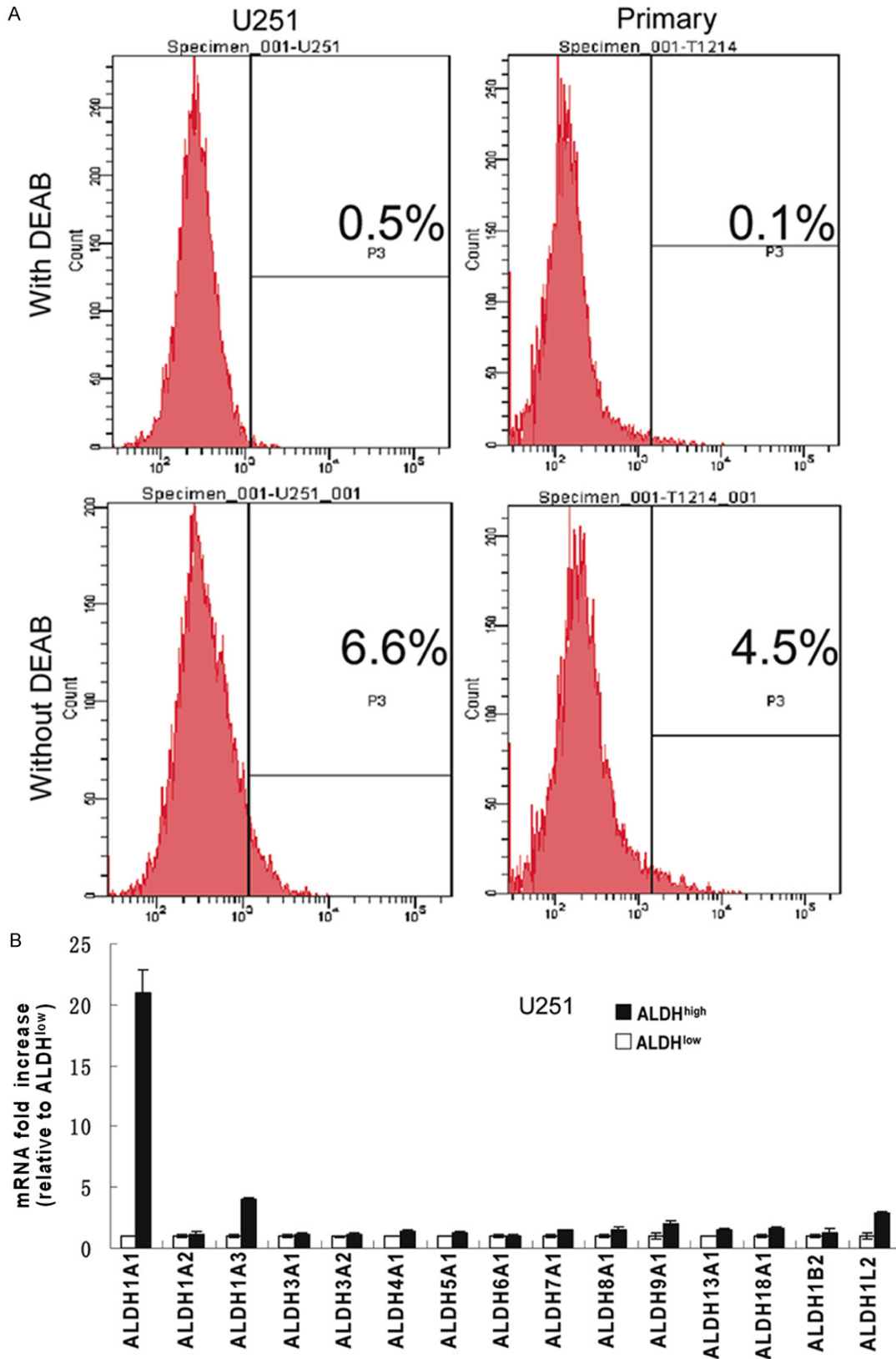


Figure S1. Subtype identification of ALDH family in ALDH^{high} and ALDH^{low} cells by flow cytometry. A. Detection of the frequency of ALDH^{high} cells in U251 cell line and a primary GBM by flow cytometry. B. qRT-PCR examination of expression of each member of ALDH family in ALDH^{high} and ALDH^{low} cells indicates that ALDH1A1 is a main subtype in ALDH^{high} cells.