

***AINTEGUMENTA* and the D-type cyclin *CYCD3;1* independently contribute to petal size control in *Arabidopsis*: Evidence for organ size compensation being an emergent rather than determined property**

Ricardo S. Randall, Emily Sornay, Walter Dewitte and James A.H. Murray

Supplementary Materials and Methods

Primers used in this study

For *ant-9* genotyping, the following primers were used for identification of the *WT* allele (5'- cactgagcttatccatgag-3' & 5'- ccatgaagattgaagtgtgtacttacc-3') and the *ant-9* allele (5'- cgtatcggttttcgattaccgtatt-3' & 5'- ccatgaagattgaagtgtgtacttacc-3'). For *ant-GK* genotyping, the following primers were used for identification of the *WT* allele (5'- agatcccaacggattcaaacagc-3' & 5'- gggctcatggataagctcag-3') and the *ant-GK* allele (5'- agatcccaacggattcaaacagc-3' & 5'- atattgaccatcatactcattgc-3'). *cyd3;1* genotyping was performed as described (Dewitte et al., 2007). 5'- acattgtgctcagtgggtgga-3' and 5'- ctgaggggaagcaagaatgga-3' were used for amplification of ACT2 cDNA. 5'- catcaccagcatggaagg-3' and 5'- agtattcctgacgacaatgc-3' were used for amplification of ANT cDNA. 5'- gcaagttgatcccttgacc-3' and 5'- cagcttgactgttcaacga-3' were used for amplification of *CYCD3;1* cDNA.

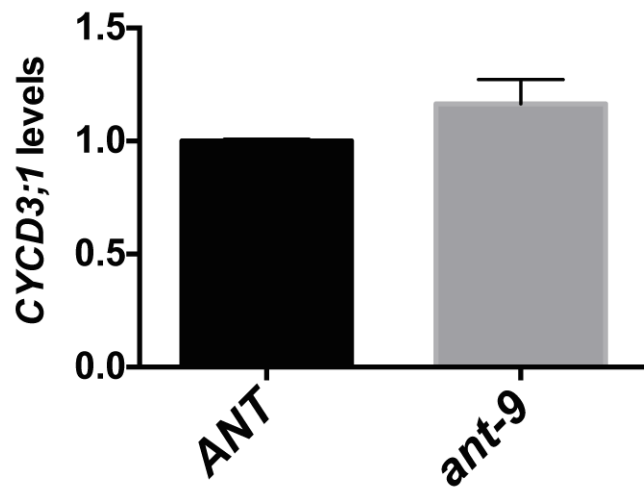


Figure S1: qPCR analysis of *CYCD3;1* transcripts in homozygous *ANT* and homozygous *ant-9* shoots grown *in vitro* for 21 days. Error bars represent s.d. from three technical replicates. RNA was extracted from several (>3) pooled shoots for each sample to obtain an average from the population.