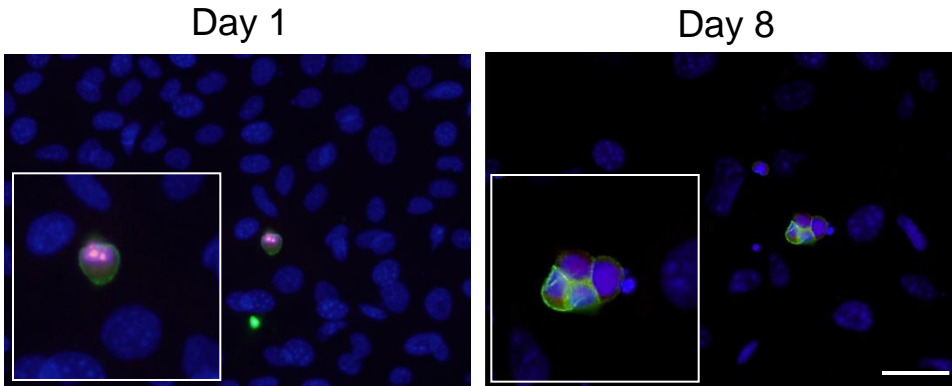
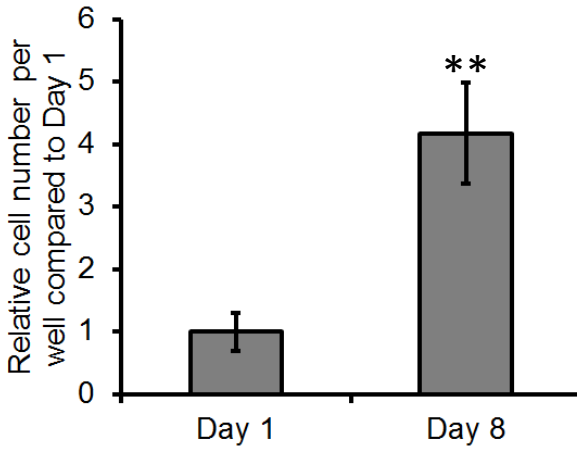


Supplementary Figure 1

A



B



S1 Fig. C4-2B cells grow on a monolayer of bone marrow stromal cells (BMSC) when seeded sparsely.

A) C4-2B cells were seeded sparsely (50 cells/cm²) on BMSC, cells were fixed with ice-cold methanol and fluorescently stained for Ki67 to assess proliferation. Green, EpCAM; Red, Ki67, Blue, DAPI. Magnification: 200x. Scale bar: 50 μ m. B) EpCAM-positive cells were counted on day 1 and day 7. Data are presented as mean \pm S.D of two independent experiments. **p<0.01 when compared to day 1.