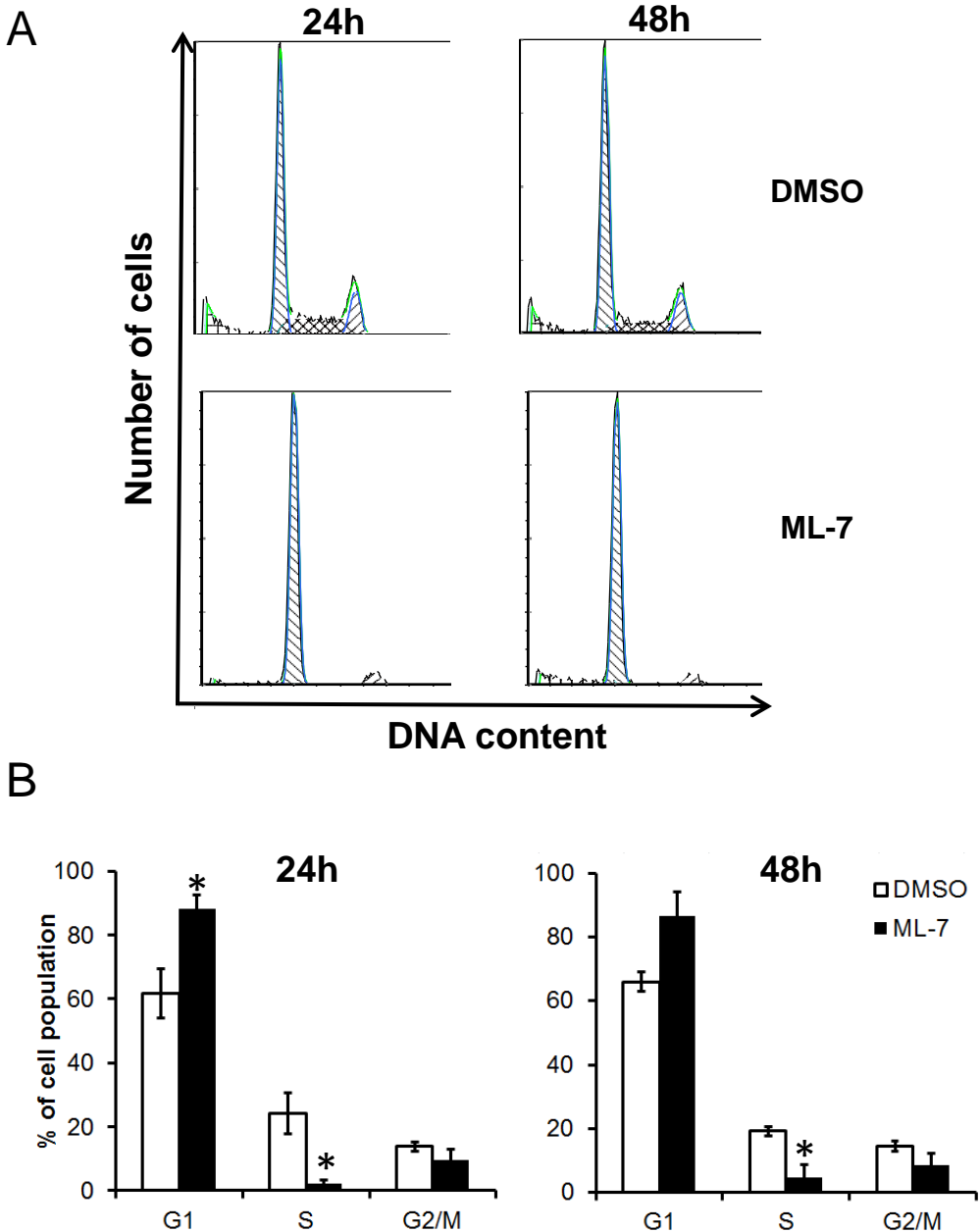


# Supplementary Figure 2



**S2 Fig. Cell cycle analysis of ML-7 treatment on C4-2B cells.** A) A representative histogram of DAPI-stained C4-2B cells treated with either DMSO or ML-7 (10 $\mu$ M) for 24h or 48h. Cell cycle was analyzed by flow cytometry. B) Percentage of cells in G1, S, and G2/M phase of C4-2B cells treated with DMSO or ML-7. Data are presented as mean $\pm$ S.D of two independent experiments. \* $p$ <0.05 when compared to the DMSO control.