

Figure S1

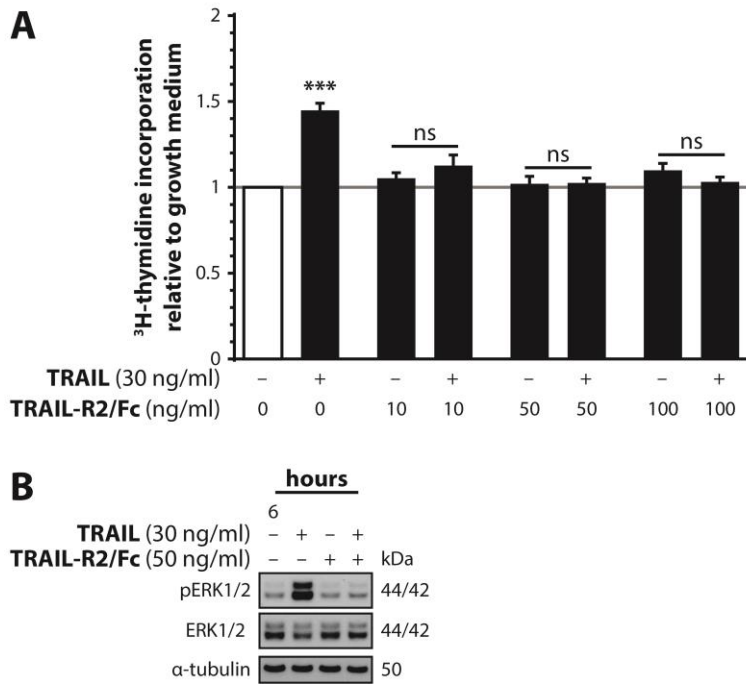


Figure S1: TRAIL-mediated induction of proliferation and activation of ERK1/2 are dependent on its binding to TRAIL receptors.

(A and B) SGBS preadipocytes were stimulated with growth medium alone or with TRAIL in the absence or presence of different doses of a recombinant human TRAIL-R2/Fc construct (R&D Systems, Wiesbaden-Nordenstadt, Germany). Of note, all stimulation media were incubated for 1 hour at 37°C before addition to the cells. (A) After 72 hours, ³H-thymidine incorporation was measured. Data are expressed as mean + SEM of three independent experiments performed. ns, not significant; ***, p<0.001 compared to growth medium alone (directly above the bars) or comparing the indicated treatments (above the connecting line) using a one-way ANOVA. (B) At the indicated time points, proteins were isolated and subjected to Western blot analysis to assess the inhibition of ERK1/2 activation by addition of the TRAIL-R2/Fc construct. α-tubulin was used as a loading control. One representative of three independent experiments performed is shown.