

Figure S2

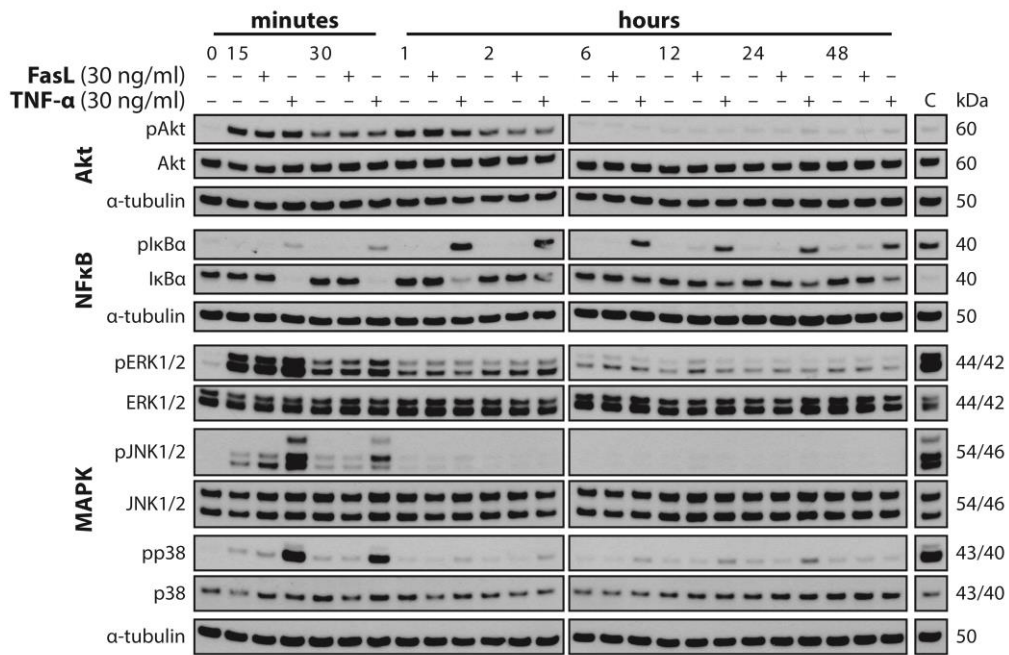


Figure S2: FasL and TNF-α activate distinct signaling cascades.

SGBS preadipocytes were stimulated with growth medium alone or with either FasL or TNF-α. At the indicated time points, proteins were isolated and subjected to Western blot analysis to assess the activation state of the Akt, NFκB, and MAPK (ERK1/2, p38, JNK) pathways. α-tubulin was used as a loading control. "C" indicates a positive control. One representative of two independent experiments performed is shown.