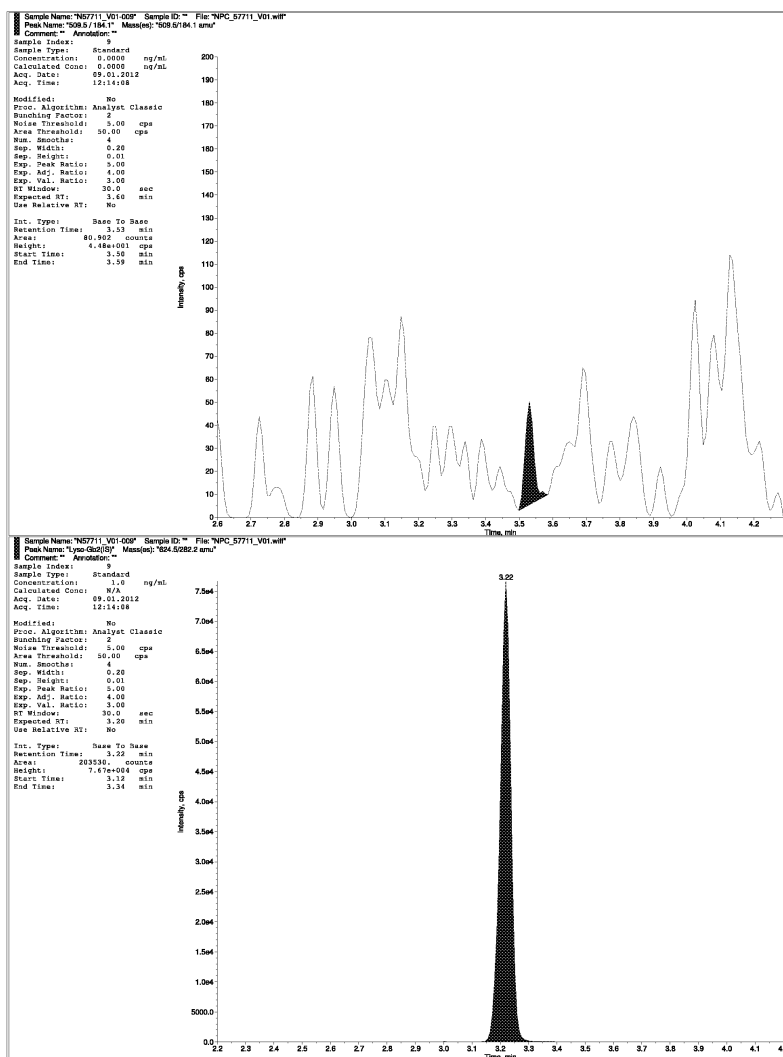


## Supplemental Figures:



**Figure S1: Chromatogram of lyso-SM-509 (top chromatogram) in human control plasma and the internal standard (bottom) calibrated at 6ng/ml. There is almost no lyso-SM-509 detectable in the control sample.**

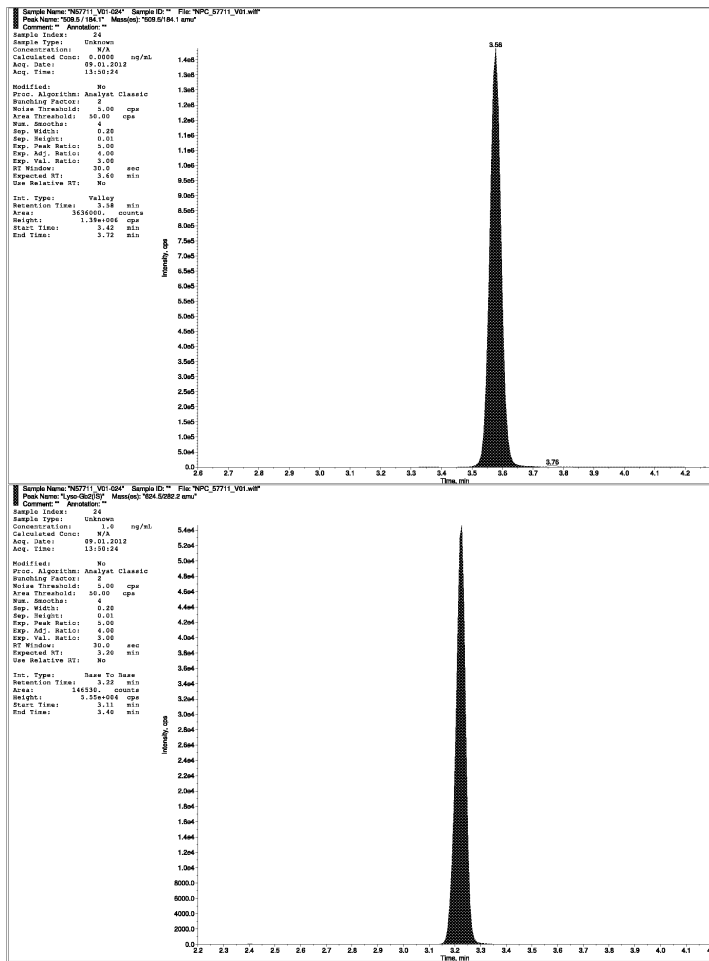


Figure S2: Chromatogram of lyso-SM-509 (top chromatogram) and internal standard (bottom) in NPC1 patient sample at a high concentration.