

Electronic Supplementary Information

5-Thiocyanato-2'-Deoxyuridine as a Possible Radiosensitizer: Electron-Induced Formation of Uracil-C5-Thiyl Radical and Its Dimerization

Magdalena Zdrowowicz,^a Lidia Chomicz,^a Michał Żyndul,^a Paweł Wityk,^a Janusz Rak,^{a,*}

Tyler J. Wiegand,^b Cameron G. Hanson,^b Amitava Adhikary,^b Michael D. Sevilla^{b,*}

^aFaculty of Chemistry, University of Gdańsk, Wita Stwosza 63, 80-308 Gdańsk, Poland

^bDepartment of Chemistry, Oakland University, Rochester, Michigan 48309, USA

Table of Content

Figure S1.....	S3
Figure S2.....	S4
Figure S3.....	S5
Figure S4.....	S6
Figure S5.....	S7
Figure S6.....	S8
Figure S7.....	S9
Figure S8.....	S10
Figure S9.....	S11
Figure S10.....	S12
Stationary points geometries – Cartesian coordinates and absolute values of electronic energy (E) and free enthalpy (G), in Hartree.....	S13

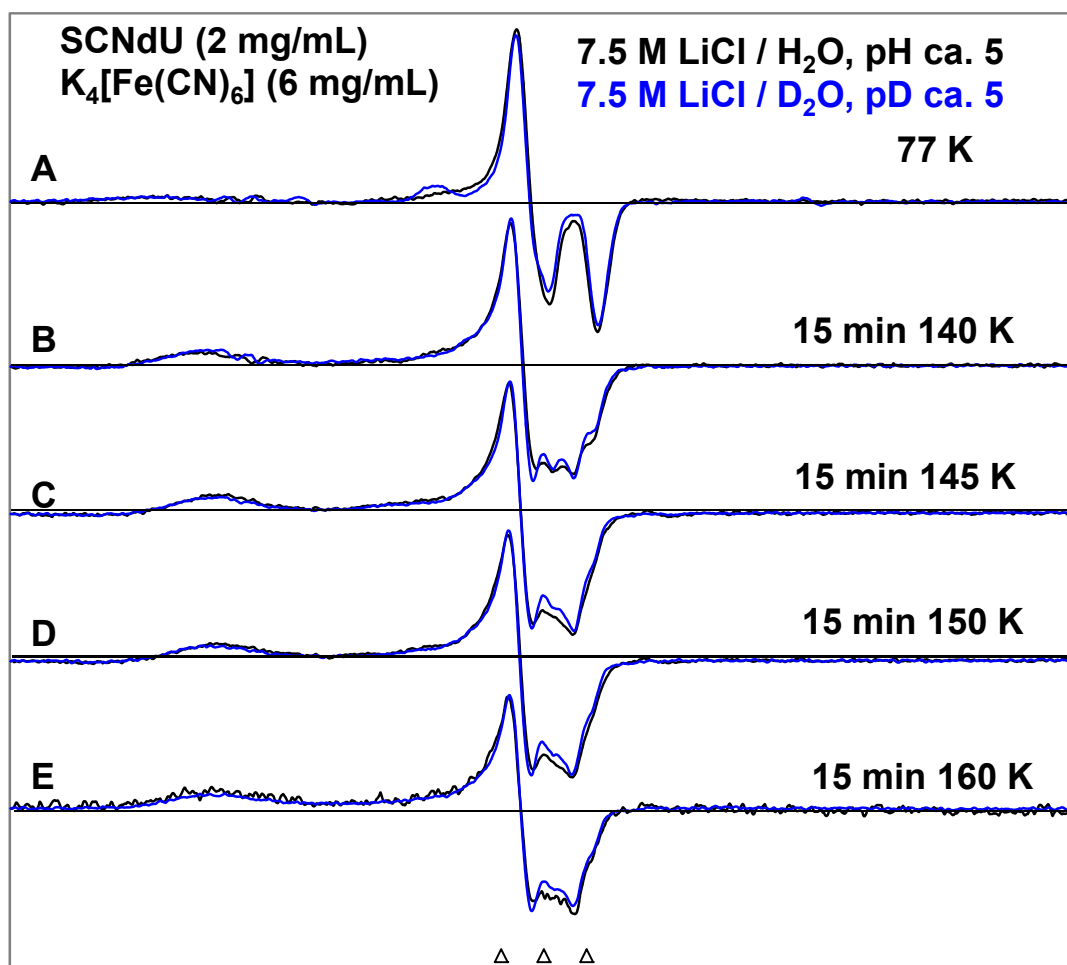


Figure S1. ESR spectra recorded at 77 K of matched γ -irradiated (77 K) N₂-saturated 7.5 M LiCl/D₂O and 7.5 M LiCl/H₂O solutions of SCNdU (2 mg/mL) with a hole scavenger K₄[Fe(CN)₆] (6 mg/mL). (A) The π -anion radical of SCNdU upon e_{pre}^- addition. Both spectra show the line components from U-5-S• as well (see Figure 1(A) in the main manuscript). Spectra (B) to (E) were obtained after at 140 to 160 K. Both spectra in Figure S1(E) are assigned to U-5-S• (see Figure 1 and its discussion in the main manuscript). The three reference markers (open triangles) in this Figure and in other Figures represent the position of Fremy's salt resonance with the central marker at $g = 2.0056$ and 13.09 G line spacing.

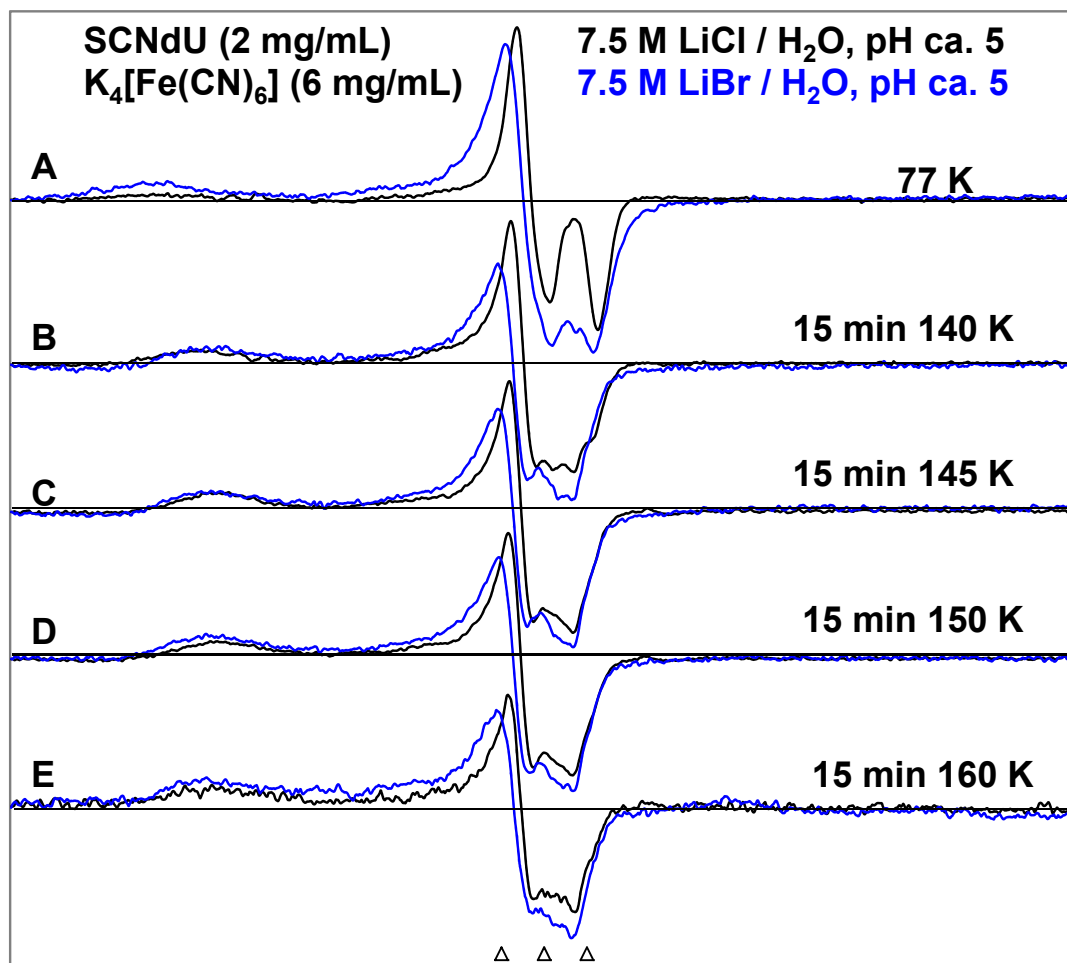


Figure S2. ESR spectra recorded at 77 K of matched γ -irradiated (77 K) N_2 -saturated 7.5 M LiCl/ H_2O and 7.5 M LiBr/ H_2O solutions of SCNdU (2 mg/mL) with a hole scavenger $K_4[Fe(CN)_6]$ (6 mg/mL). (A) The π -anion radical of SCNdU upon e_{pre}^- addition. Both spectra show the line components from U-5-S \cdot as well (see Figure 1(A) in the main manuscript). Spectra (B) to (E) were obtained after at 140 to 160 K. Both spectra in Figure (E) are assigned to U-5-S \cdot (see Figure 1 and its discussion in the main manuscript).

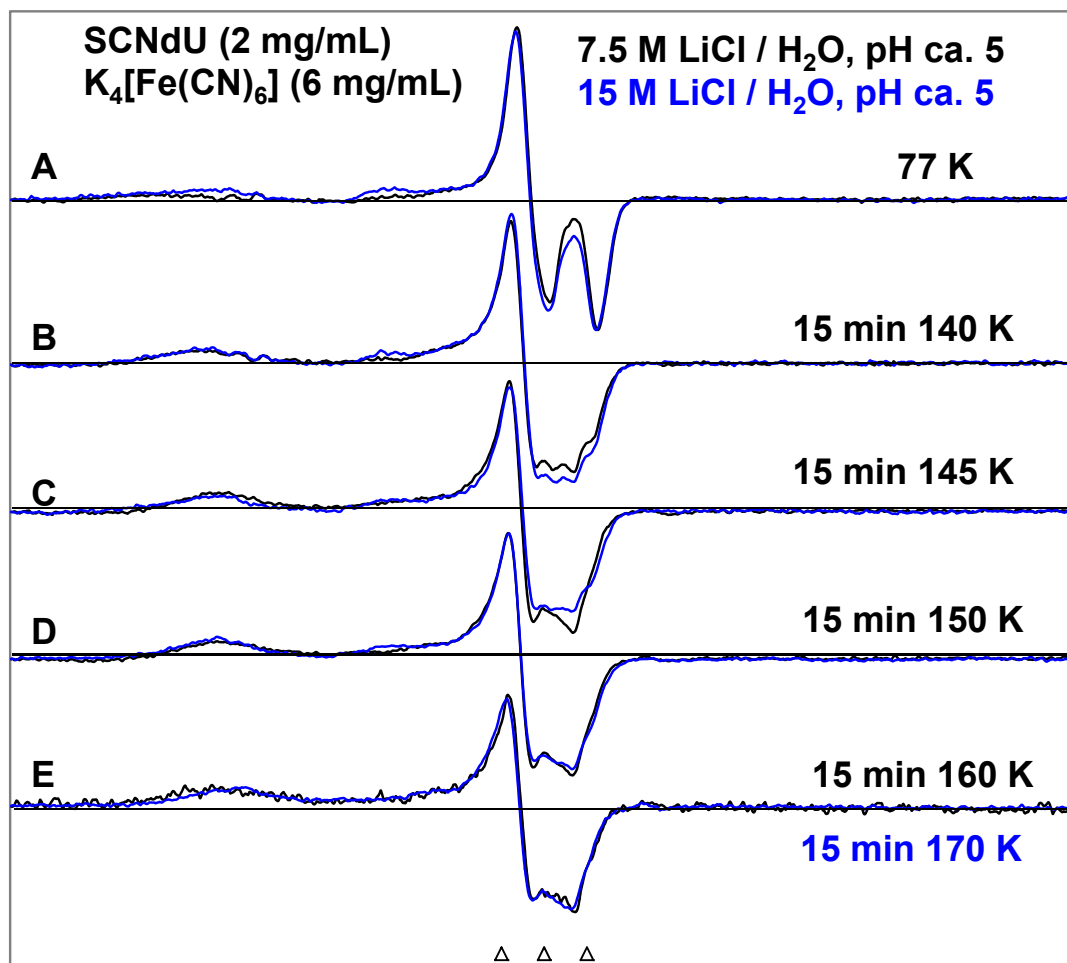


Figure S3. ESR spectra recorded at 77 K of matched γ -irradiated (77 K) N_2 -saturated 7.5 M LiCl/ H_2O and 15 M LiCl/ H_2O solutions of SCNdU (2 mg/mL) with a hole scavenger $\text{K}_4[\text{Fe}(\text{CN})_6]$ (6 mg/mL). (A) The π -anion radical of SCNdU upon e_{pre}^- addition. Both spectra show the line components from U-5-S \cdot as well (see Figure 1(A) in the main manuscript). Spectra (B) to (E) were obtained after at 140 to 170 K. Both spectra in Figure (E) are assigned to U-5-S \cdot (see Figure 1 and its discussion in the main manuscript).

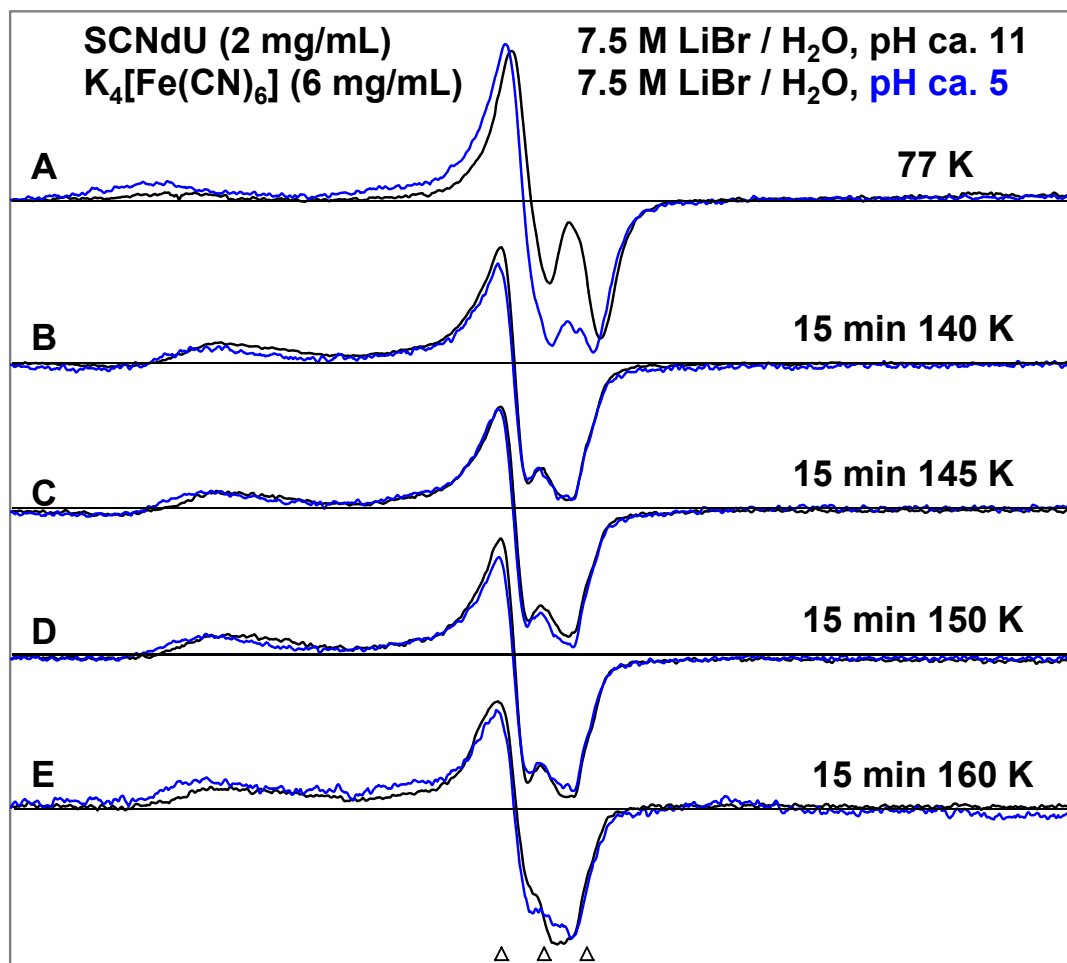


Figure S4. ESR spectra recorded at 77 K of matched γ -irradiated (77 K) N_2 -saturated 7.5 M LiBr/ H_2O solutions with pHs ca. 5 and ca. 11 of SCNdU (2 mg/mL) with a hole scavenger $\text{K}_4[\text{Fe}(\text{CN})_6]$ (6 mg/mL). (A) The π -anion radical of SCNdU upon e_{pre}^- addition. Both spectra show the line components from U-5-S \cdot as well (see Figure 1(A) in the main manuscript). Spectra (B) to (E) were obtained after at 140 to 160 K. Both spectra in Figure (E) are assigned to U-5-S \cdot (see Figure 1 and its discussion in the main manuscript).

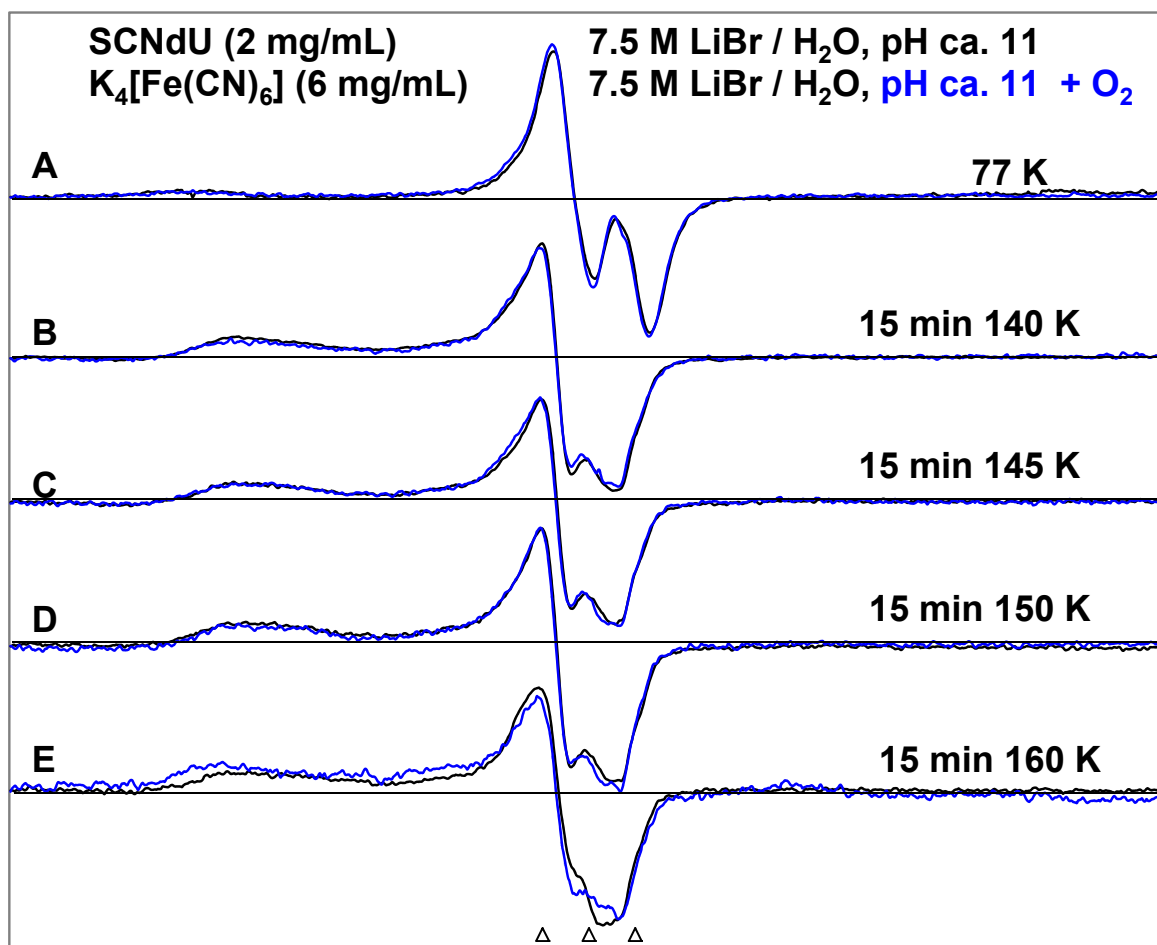


Figure S5. ESR spectra recorded at 77 K of matched γ -irradiated (77 K) N₂-saturated 7.5 M LiBr/H₂O solutions with pH ca. 11 and in the presence and in absence of oxygen of SCNdU (2 mg/mL) with a hole scavenger K₄[Fe(CN)₆] (6 mg/mL). Oxygen was bubbled for a minute into the solution. (A) The π -anion radical of SCNdU upon e_{pre}^- addition. Both spectra show the line components from U-5-S• as well (see Figure 1(A) in the main manuscript). Spectra (B) to (E) were obtained after at 140 to 160 K. Both spectra in Figure (E) are assigned to U-5-S• (see Figure 1 and its discussion in the main manuscript).

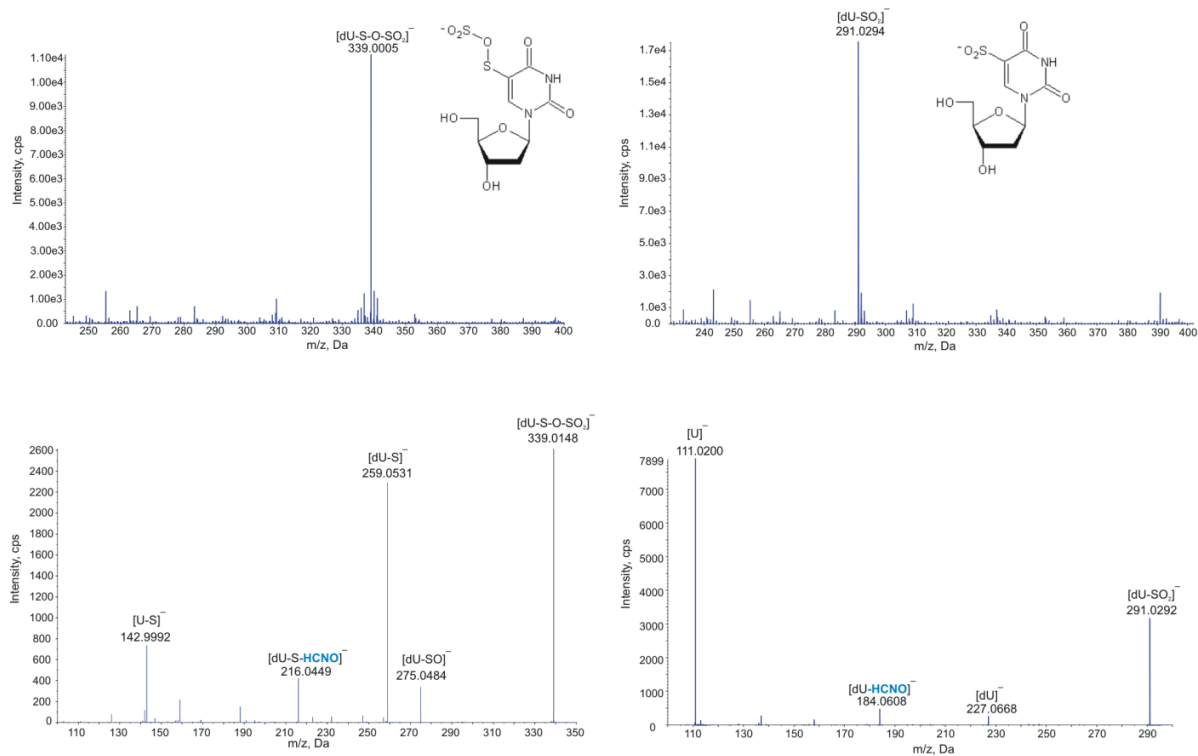


Figure S6. MS (upper panel) and MS/MS (lower panel) spectra (in negative ionization mode) of the additional products of the radiolysis (the dose of 50 Gy) and ion identities.

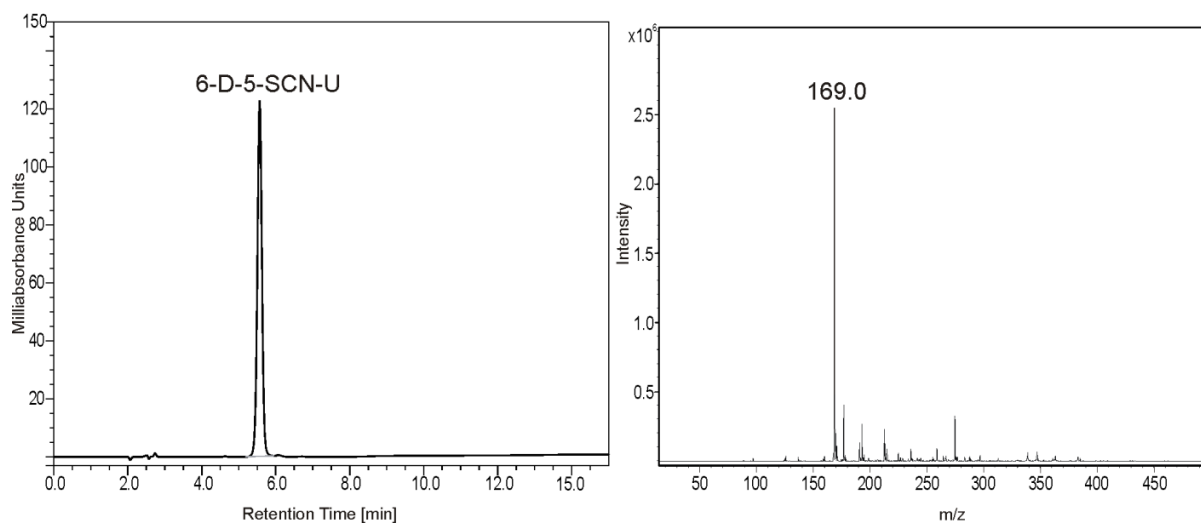


Figure S7. HPLC chromatogram and MS spectra (in negative ionization mode) of synthesized and purified 6-deutero-5-thiocyanatouracil (6-D-5-SCNU).

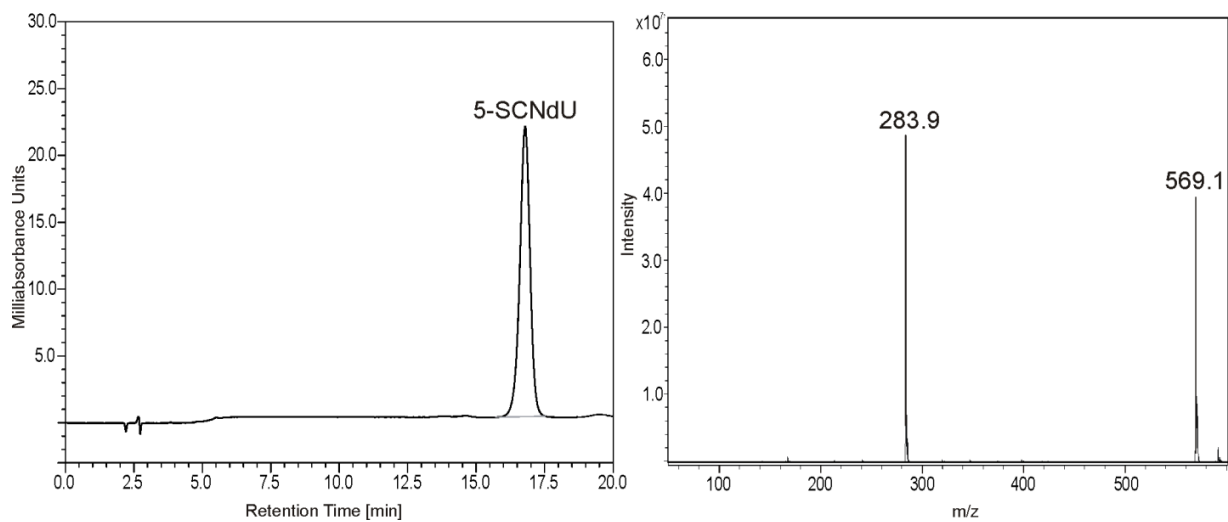


Figure S8. HPLC chromatogram and MS spectra (in negative ionization mode) of synthesized and purified 5-thiocyanato-2'-deoxyuridine (SCNdU).

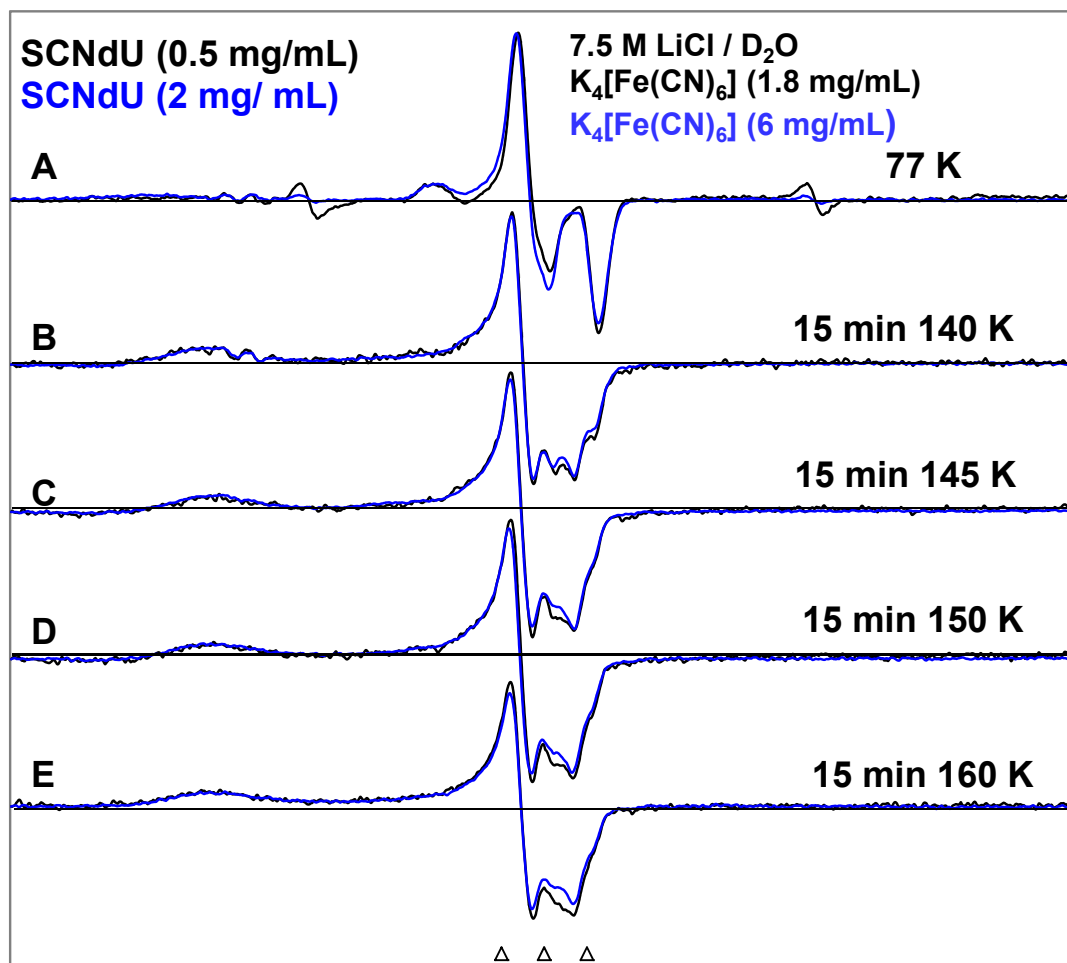


Figure S9. ESR spectra recorded at 77 K of matched γ -irradiated (77 K) N_2 -saturated 7.5 M LiCl/D₂O solutions with two different concentrations of SCNdU (0.5 and 2 mg/mL) with hole scavenger $K_4[Fe(CN)_6]$ (1.8 and 6 mg/mL). (A) The π -anion radical of SCNdU upon e_{pre}^- addition. Both spectra show the line components from U-5-S• as well (see Figure 1(A) in the main manuscript). Spectra (B) to (E) were obtained after at 140 to 160 K. Both spectra in Figure (E) are assigned to U-5-S• (see Figure 1 and its discussion in the main manuscript).

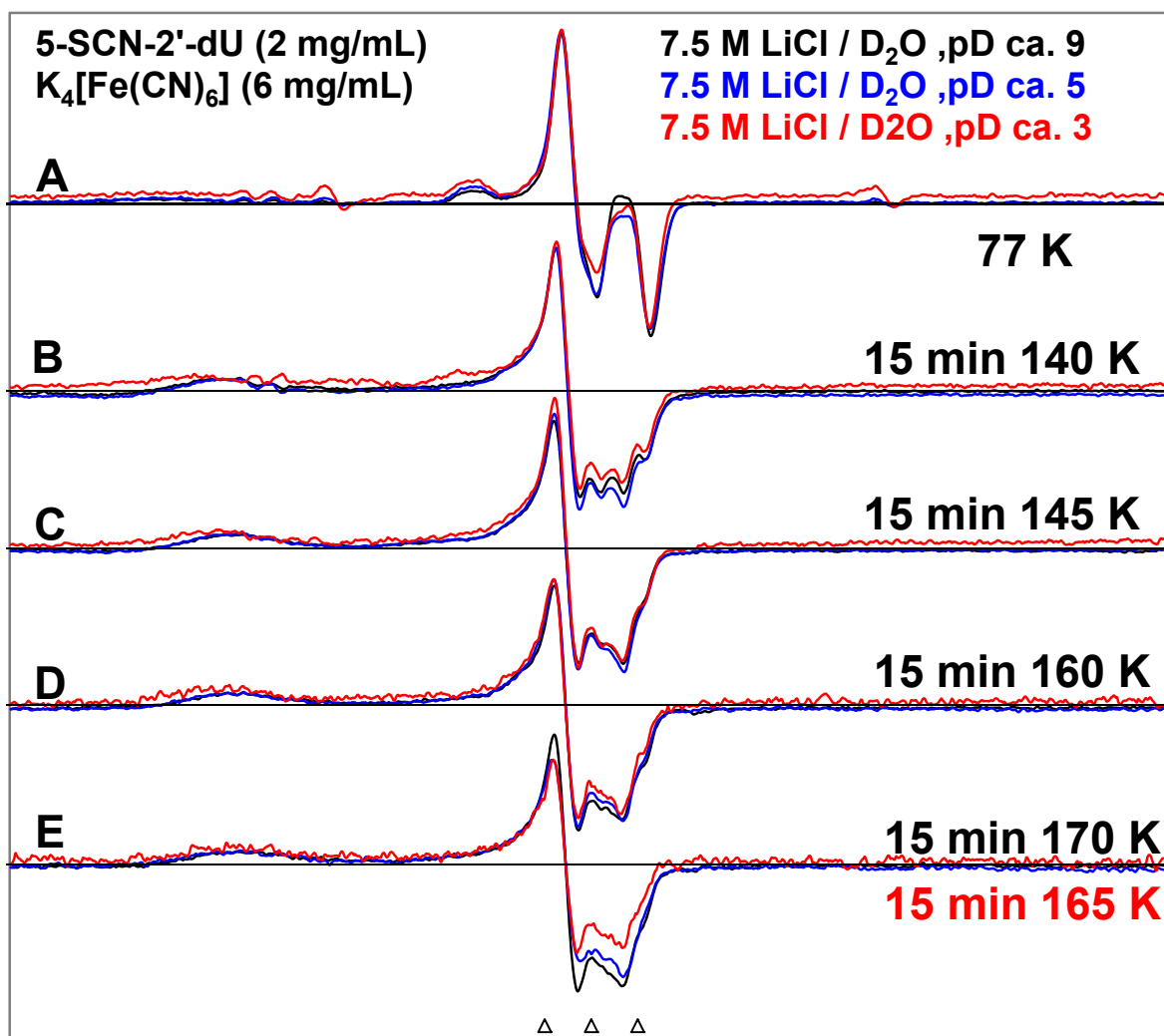


Figure S10. ESR spectra recorded at 77 K of matched γ -irradiated (77 K) N_2 -saturated 7.5 M LiCl/D₂O solutions with pHs ca. 3, 5, and ca. 9 of SCNdU (2 mg/mL) with a hole scavenger $K_4[Fe(CN)_6]$ (6 mg/mL). (A) The π -anion radical of SCNdU upon e_{pre}^- addition. Both spectra show the line components from U-5-S \cdot as well (see Figure 1(A) in the main manuscript). Spectra (B) to (E) were obtained after at 140 to 160 K. Both spectra in Figure (E) are assigned to U-5-S \cdot (see Figure 1 and its discussion in the main manuscript).

Stationary points geometries, calculated at M06-2x/6-31++G(d,p) level, PCM model of water solution. No imaginary frequencies found, with the exception of transition states (p. E and F).

A. Neutral forms of SCNdU

a) C3'-exo-front neutral SCNdU E= -1325.92322588 G= -1325.745605

O	0.243092473	0.199494015	-0.2445158654
C	-0.1007823416	0.215456957	1.1088273932
C	1.1648474031	0.5800863382	1.9040135063
C	2.1206999572	1.095641215	0.8224001503
C	1.6687032898	0.3131607391	-0.4046150151
N	-0.6313446271	-1.1325279433	1.4881343255
C	-1.1797910597	-1.228459273	2.7606695182
N	-1.6624987512	-2.4752434339	3.0900849918
C	-1.6595244894	-3.6253623847	2.304562451
C	-1.0772070223	-3.4134564648	0.9857431708
C	-0.5914992107	-2.1922771239	0.6396506243
O	-1.2215726435	-0.275518006	3.5195048516
S	-1.0972804208	-4.7280598039	-0.1957039967
C	0.081696338	-5.7466394846	0.5101599383
N	0.8679088212	-6.4725272791	0.9588310256
O	-2.1033830514	-4.6780012587	2.7338066778
O	1.9097066555	2.4679968766	0.5355382367
C	2.3233846666	-1.053529547	-0.5098255066

O	1.6855342716	-1.7497408119	-1.5678074226
H	-2.0545668013	-2.5608481621	4.0229372807
H	-0.1462400767	-1.9990301378	-0.33389205
H	1.8291126337	0.8764611782	-1.3271034136
H	3.1704679143	0.9031700798	1.0710810211
H	0.9606628403	1.3305451553	2.6685890582
H	1.5766275563	-0.3042997919	2.3981533948
H	-0.923570479	0.9153572809	1.2665892476
H	3.392675446	-0.9154898056	-0.7086424497
H	2.2194939403	-1.6064224156	0.4361774646
H	2.1372029438	-2.5905577731	-1.7096646383
H	2.1440939129	2.9911167777	1.3123389313

b) C3'-exo-back neutral SCNdU E= -1325.92309668 G= -1325.745356

O	0.2772805227	0.3407795499	-0.2533600208
C	-0.037209587	0.170519519	1.0968313358
C	1.2163746267	0.5267248699	1.913458905
C	2.1018997698	1.2479286825	0.8912166484
C	1.6860128386	0.5848607102	-0.4159510135
N	-0.4647933103	-1.2472012811	1.3179655611
C	-0.9971953251	-1.5273341053	2.5700270586
N	-1.3983770787	-2.8321045128	2.7491173835
C	-1.317477487	-3.8817003483	1.8371994012
C	-0.7473884701	-3.4821074077	0.5570530102

C	-0.3660746432	-2.1940143753	0.3490037244
O	-1.0965121124	-0.674908445	3.4355631518
S	-0.4744512167	-4.7039728498	-0.6910189473
C	-2.0991600674	-5.0189511826	-1.1219455576
N	-3.186790118	-5.2736379544	-1.4356086467
O	-1.7151224663	-4.9977366069	2.1301838168
O	1.7690395966	2.6213660461	0.7774651356
C	2.4393396883	-0.7043955877	-0.695578128
O	1.8296544005	-1.3138506708	-1.8214776091
H	-1.7915077385	-3.0484608913	3.6601450252
H	0.0513673813	-1.8566287851	-0.5972816067
H	1.7835164538	1.2665387313	-1.2645684903
H	3.1696789806	1.1178715554	1.100497996
H	0.9764406737	1.1559446511	2.7712146158
H	1.7050162131	-0.3797845955	2.2816781879
H	-0.9034137688	0.7852488364	1.3488304911
H	3.4905576515	-0.4627970273	-0.8914402664
H	2.3988943623	-1.3741742179	0.1771589571
H	2.3422769829	-2.0905401526	-2.0767195477
H	1.9926377074	3.0683943038	1.603443932

c) C3'-endo-front neutral SCNdU E= -1325.91984651 G= -1325.744085

C	0.1321707828	-0.602177815	0.1151669269
N	-0.011052971	-0.1708340732	1.3942139939

C	0.9842689438	0.5605314355	2.0345244962
N	2.0915813753	0.8303476934	1.2619604087
C	2.3274284255	0.4482898241	-0.056054772
C	1.2382328834	-0.3353274235	-0.6262843344
C	-1.2305377227	-0.4693187113	2.2152138841
O	-1.9979205297	-1.4210715031	1.531632597
C	-3.2814886516	-0.8802032091	1.1711600951
C	-3.0973424984	0.6331875531	1.2345001893
C	-2.1072447937	0.7696754508	2.3918358468
O	-4.352827096	1.235562851	1.4513604247
C	-3.7104019711	-1.3988879643	-0.1781734074
O	-3.9477281074	-2.7910524696	-0.0682932392
O	0.8726094277	0.934188455	3.1887283998
O	3.3552167455	0.770173869	-0.6285818716
S	1.4169435855	-1.0243697706	-2.2436424659
C	1.2862005047	0.4113826081	-3.1634058488
N	1.2124497413	1.3622681087	-3.8240877426
H	2.8192487764	1.3737695751	1.7166509428
H	-0.6910591815	-1.194741975	-0.2672948112
H	-4.0164338494	-1.1824300627	1.9297766271
H	-2.6510026906	0.9958083894	0.2966913723
H	-2.6565714826	0.689969098	3.3351797398
H	-1.533634122	1.696769903	2.3915030897
H	-0.8597726129	-0.8812100738	3.1545846347

H	-4.621815811	-0.8587649571	-0.467282935
H	-2.9316984348	-1.1875851865	-0.9238572742
H	-4.2318314917	-3.1296536589	-0.9255258868
H	-4.2723891839	2.1901302208	1.3353260485

d) C3'-endo-back neutral SCNdU E= -1325.91984651 G= -1325.744085

C	0.1416336663	-0.5226471753	0.3039194551
N	0.0319630709	0.0957111404	1.5454362251
C	1.1237185783	0.5427582281	2.2172905485
C	2.3888338883	0.3589992989	1.7579610059
C	2.6130241114	-0.3085844948	0.4812538496
N	1.4315005592	-0.6941294529	-0.1462118512
C	-1.3672340431	0.2989649297	2.048091815
C	-2.0029617727	-1.0156262898	2.4961672969
C	-1.7025674852	-1.0310982393	3.9955171302
C	-1.8016667569	0.4516991848	4.3399817516
O	-1.3126553153	1.1343728432	3.1712732807
C	-1.0101271239	0.8616945786	5.5561126002
O	-1.28067164	2.2257902469	5.8260103558
O	-2.6343261492	-1.7424160516	4.7785575481
S	3.7771630167	0.85841838	2.7313545063
C	4.3306221491	2.1565459	1.7651877408
N	4.7487874254	3.0354342721	1.1337823984
O	3.6966307382	-0.516975615	-0.0387901451

O	-0.8350665913	-0.8836140434	-0.3286657783
H	1.521511302	-1.1488048441	-1.0499518521
H	0.9147450182	1.0604982644	3.1467251713
H	-2.85853631	0.7148915159	4.4853089752
H	-0.6813391522	-1.3927910316	4.1856913203
H	-3.0867987776	-0.9561613882	2.3567593685
H	-1.6223239228	-1.8774830524	1.9481198447
H	-1.9044087247	0.7884438916	1.2340919213
H	-1.3236949735	0.2191492564	6.3893611131
H	0.0609081465	0.6974560422	5.3753186455
H	-0.7940512444	2.492106068	6.6149280061
H	-2.4464249747	-2.6868948148	4.7184202685

B. Anionradical forms of SCNdU

a) C3'-exo-front anionradical SCNdU E= -1326.01357383 G= -1325.842517

O	0.2053110817	0.2404859482	-0.159513996
C	-0.0117946307	0.1208185376	1.2375154308
C	1.3775912632	0.0977130393	1.8879170433
C	2.2475163182	0.8115325526	0.8559433599
C	1.6001403407	0.3676667538	-0.4538280977
N	-0.7972256709	-1.0847054125	1.4976449806
C	-1.6478809036	-1.0636918626	2.5654402431
N	-2.2669512298	-2.2618440896	2.859221149
C	-1.9285217662	-3.5453262376	2.3479548661

C	-1.057841362	-3.4900491821	1.2435798577
C	-0.4604079621	-2.2729426834	0.8064281545
O	-1.8704415884	-0.0527875817	3.2416869629
S	-0.6226168511	-4.9797847813	0.4310861794
C	0.8975058125	-5.3417703806	1.1608842172
N	1.9274152465	-5.5787285118	1.6458595903
O	-2.4382873588	-4.5359325697	2.9124974155
O	2.1124543504	2.2238380894	0.9315828157
C	2.1890475017	-0.9373797332	-0.965123338
O	1.4153853447	-1.3613920059	-2.0751953383
H	-2.8416857238	-2.2542568601	3.6921235262
H	-0.1198302327	-2.1284719494	-0.2125897207
H	1.697600193	1.1411359535	-1.2225906164
H	3.3024831812	0.5184836915	0.9127518347
H	1.3837120451	0.5928020073	2.8616601847
H	1.7057576127	-0.9391340598	2.017149887
H	-0.6118403212	0.9639310015	1.5814315822
H	3.2317358535	-0.7547919846	-1.2563228859
H	2.1739956171	-1.6962596899	-0.1702913636
H	1.7845884907	-2.1850193611	-2.4147963146
H	2.4697354373	2.5263570746	1.7759152924

b) C3'-exo-back anionradical SCNdU E= -1326.01269553 G= -1325.842836

O	0.1947594	0.3513036891	-0.1371862629
---	-----------	--------------	---------------

C	0.0429761868	0.11004238	1.2532448754
C	1.4519965704	0.1766179789	1.8557230939
C	2.2061642426	1.0549390287	0.8606386547
C	1.5543665305	0.6569303676	-0.4621766416
N	-0.6117361076	-1.1819852042	1.4445231197
C	-1.4517494536	-1.3136755933	2.5137349431
N	-1.9423936634	-2.5832508172	2.7343679577
C	-1.5361938103	-3.7873558567	2.0969566193
C	-0.6320631523	-3.580787349	1.0395558534
C	-0.1620966857	-2.283645049	0.6762687042
O	-1.7704651641	-0.3744063157	3.2521004638
S	-0.0485721533	-4.9700047533	0.1427755947
C	-1.2366852308	-5.1033065259	-1.0956707505
N	-2.0348633604	-5.2144994938	-1.9335614032
O	-2.0228979169	-4.8532648606	2.5312963215
O	1.9361918892	2.4360418193	1.0598920953
C	2.255856009	-0.5264569857	-1.1086170984
O	1.4927873117	-0.9261015889	-2.2348558259
H	-2.5355450407	-2.68423413	3.5477032701
H	0.1383730276	-2.0395836822	-0.3365727128
H	1.5373700021	1.5001749196	-1.1601867814
H	3.2865694971	0.8673376746	0.8602617434
H	1.4485549865	0.5907566183	2.8665697126
H	1.8856194827	-0.8283104637	1.8872846712

H	-0.6218699991	0.8622405876	1.6788395304
H	3.2642276577	-0.2097815621	-1.4060485271
H	2.3450369128	-1.3522106321	-0.3891987396
H	1.9358943294	-1.6673539454	-2.6643196395
H	2.2649021623	2.6957062033	1.9297616618

c) C3'-endo-front anionradical SCNdU E= -1326.01289481 G= -1325.843165

C	0.0538234146	-0.1801393355	0.0224169614
N	0.049235532	-0.1797083674	1.4387566062
C	1.1851318554	-0.0095324881	2.1843574802
N	2.3563387966	0.0931005216	1.4651816177
C	2.5046204183	0.1839868541	0.055273373
C	1.304614548	-0.0400683007	-0.6457622118
C	-1.2376567647	-0.16159513	2.1161790666
O	-1.9866261369	-1.2964187974	1.6834854332
C	-3.280475873	-0.9084855898	1.2310475942
C	-3.144428899	0.5535536277	0.8061146228
C	-2.0952232862	1.0732012289	1.7887353534
O	-4.4137189119	1.1694802984	0.9100503101
C	-3.7315181197	-1.8178366541	0.1147034756
O	-3.9898183923	-3.1054237893	0.6514411123
O	1.1953949843	0.0571188095	3.4174303975
O	3.6463094354	0.4336792353	-0.3830680302
S	1.3356380458	-0.0630695293	-2.3958030567

C	0.9044304161	1.5623949298	-2.7780659567
N	0.6136997487	2.6576744674	-3.0383031569
H	3.1881618266	0.2646775764	2.0151610903
H	-0.7666339097	-0.724768009	-0.4323986397
H	-4.0014283573	-0.9639064908	2.0616434904
H	-2.7754991735	0.6131821003	-0.2272779415
H	-2.6105589567	1.4134357554	2.6920829705
H	-1.487703003	1.8889823342	1.3919216254
H	-1.0231859167	-0.2456832314	3.1807094435
H	-4.6373883991	-1.3868782512	-0.3320640405
H	-2.9450123893	-1.8610061309	-0.651510524
H	-4.2983419616	-3.6833617043	-0.0562698306
H	-4.3785825813	2.0378402415	0.4913564921

d) C3'-endo-back anionradical SCNdU E= -1326.01214721 G= -1325.843283

C	-0.028389197	0.0251410293	-0.0089172158
N	-0.0681710134	0.0347604708	1.3602528128
C	1.094447834	-0.0612866542	2.1645733856
C	2.3544914496	-0.1845750448	1.5079073242
C	2.4730944297	-0.1906013735	0.106632462
N	1.2309900853	-0.0296367779	-0.5646125554
C	-1.3606301295	-0.0337252451	2.0209496673
C	-1.5933651724	-1.3399629489	2.8006602755
C	-1.404657691	-0.9426085033	4.2645717785

C	-1.8327299688	0.5242983225	4.2499577804
O	-1.427940184	1.0228310739	2.9794841111
C	-1.204193496	1.3442053727	5.3492958554
O	-1.782094406	2.6400282027	5.3398025622
O	-2.2232846682	-1.6427841857	5.1817360229
S	3.7991288349	-0.3799773524	2.4813160253
C	4.3244879368	1.2494703812	2.6529611504
N	4.7051082678	2.3414630313	2.7715434303
O	3.4938985512	-0.3048120707	-0.6043347678
O	-1.0324409917	0.0573036321	-0.7273464034
H	1.2588530614	-0.062647698	-1.5753795144
H	1.0087676746	0.3979244607	3.144091174
H	-2.9295154129	0.5684857068	4.3415785134
H	-0.3487890024	-1.0221565577	4.5578671818
H	-2.6279563285	-1.6702089832	2.6667329733
H	-0.9174671221	-2.1304473286	2.4686015276
H	-2.1099781264	0.124077569	1.246307892
H	-1.3905737545	0.8351145875	6.3042745873
H	-0.1195751062	1.3956021273	5.180499245
H	-1.3797709501	3.1670541335	6.0399610955
H	-1.8455586912	-2.5166218291	5.3380341393

C. Anionradical complex-1 forms of SCNdU

a) C3'-exo-front complex-1 E= -1326.01603195 G= -1325.845063

C	0.1411231721	-0.1178424904	0.0221257944
N	0.0195638986	0.0737294576	1.3846189033
C	1.1270279475	0.2455517804	2.1898419399
N	2.3454606941	0.1581822031	1.5446582367
C	2.5845749438	-0.0308558153	0.177153103
C	1.3495374191	-0.1672155664	-0.5484582165
C	-1.3038532888	0.1923122129	2.0496918544
O	-2.2813771637	-0.3689667608	1.2159792704
C	-3.2917618067	0.6006190414	0.8853100534
C	-3.2044572514	1.6428638575	1.9944926587
C	-1.7072947398	1.6514273026	2.3050233129
O	-3.9673834907	1.1523464667	3.0866381399
C	-3.0655153816	1.1755352423	-0.5046558877
O	-3.0746261428	0.1226262858	-1.4414335133
O	1.0390959391	0.4608678256	3.3920529888
O	3.7278313292	-0.0657448066	-0.2551762053
S	1.798716488	0.7399227824	-3.8364991662
C	0.2068720484	0.7295013303	-3.3764258692
N	-0.9197311407	0.7232449662	-3.0452273383
H	3.1595995798	0.2817546758	2.139185363
H	-0.790840607	-0.2385190845	-0.523424654
H	-4.2503068651	0.0741622896	0.9132442923
H	-3.5711531775	2.6231762658	1.6696278382
H	-1.4894036555	1.96462341	3.3273824371

H	-1.1746026482	2.317315745	1.6188871107
H	-1.2271129731	-0.3878797099	2.9713976217
H	-3.8654262705	1.8997340774	-0.714010327
H	-2.1082838752	1.7187504574	-0.540013034
H	-2.3947108645	0.3139217214	-2.122726643
H	-3.9000295743	1.7756392733	3.8209029519

b) C3'-exo-back complex-1 E= -1326.00632630 G= -1325.835951

C	-0.0701245998	-0.3072207166	-0.0810082313
N	-0.0732943566	0.0323406603	1.267376211
C	1.0853872926	0.3724799397	1.9208521131
N	2.224279414	0.3440781887	1.1450074527
C	2.3207512566	0.0387050622	-0.2222537658
C	1.053118446	-0.3123371263	-0.8171731727
C	-1.3148216534	0.0842576773	2.0820357212
O	-2.3671308414	-0.5035419523	1.3637875537
C	-3.3600087819	0.4776185339	1.0278935671
C	-3.2425254047	1.5270051356	2.1272606053
C	-1.7382183541	1.5274309127	2.4095457481
O	-3.9943245056	1.0496220232	3.232657146
C	-3.1330185867	1.0493785286	-0.3611863581
O	-3.1444954593	-0.0348016581	-1.2742915483
O	1.1077053536	0.6830589521	3.10995694
O	3.4202162061	0.0900947414	-0.7675363227

S	0.6747255723	-0.8226600509	-3.3431621316
C	1.4451237091	-2.2989906394	-3.2255271337
N	1.988970918	-3.3327684253	-3.1323464653
H	3.0823639298	0.5978686766	1.6245876887
H	-1.0463595841	-0.569780537	-0.4799638279
H	-4.3263015179	-0.033137397	1.0625588261
H	-3.6073071032	2.5082385501	1.8026990896
H	-1.5076706833	1.7953105797	3.4415541692
H	-1.2219153001	2.2330145604	1.751783126
H	-1.1207777758	-0.5089056282	2.9781868542
H	-3.9350343853	1.7642131601	-0.5818646957
H	-2.172598463	1.5845584817	-0.4052448775
H	-3.0246746129	0.305052495	-2.1692343718
H	-3.8851225026	1.6589551026	3.9736120503

c) C3'-endo-front complex-1 E= -1326.00683113 G= -1325.839459

C	-0.1427217279	-0.0174207041	-0.0146301288
C	-0.0829292365	0.0371997942	1.5189294998
O	1.2842396785	0.1671035989	1.8673860402
C	2.1168393622	0.1275514674	0.705673132
C	1.2143538699	0.5365445738	-0.4581158857
N	-0.8070554656	1.176898608	2.0964526046
C	-0.3433188263	2.470690474	1.8778340377
C	-0.9693638818	3.5602081191	2.3365246925

C	-2.1842732501	3.4269691484	3.1080183138
N	-2.571130857	2.091543618	3.2967941335
C	-1.9571856425	0.9495606498	2.8202434006
O	-2.4214826734	-0.1656618912	3.0339866306
O	-2.8684396115	4.3242807903	3.5883384917
S	0.1625839445	5.8487445869	1.5439090213
C	1.1036182724	4.914636781	0.5352658867
N	1.7509027724	4.2241688043	-0.1580938481
C	3.3028083273	1.0411427508	0.8915536055
O	4.1583324618	0.4785684657	1.8734083726
O	1.7211293341	-0.0394207701	-1.6452515924
H	-3.4210644659	1.9298759249	3.828270853
H	0.5828304415	2.5279661473	1.3120478325
H	2.4651081509	-0.902311965	0.5368280242
H	1.195490218	1.6316953275	-0.5506925264
H	-0.2051947316	-1.0602160296	-0.3397100959
H	-1.0006727892	0.5284371801	-0.411526862
H	-0.5119292448	-0.8483302373	1.9865889756
H	3.8154383681	1.1326142602	-0.0758737378
H	2.946390058	2.035565182	1.1932295809
H	4.9007466255	1.0761412641	2.0206599852
H	1.3098327367	0.3894544805	-2.4050831214

d) C3'-endo-front complex-1 E= -1326.00433386 G= -1325.835415

O	-0.0058031361	-0.0576061519	-0.0344879399
C	-0.0250034565	-0.035308514	1.3722739209
C	1.4329387203	-0.027124303	1.8323210274
C	2.1487346665	-0.6901092607	0.6554156474
C	1.3387152714	-0.1610696265	-0.5255014361
N	-0.7593995894	-1.2324047737	1.8593323901
C	-1.1732621266	-1.1893363323	3.1696442971
N	-1.8423072299	-2.311427073	3.6082051967
C	-2.1202495169	-3.4817668717	2.8846551751
C	-1.6447387722	-3.4370944187	1.5212239053
C	-1.0064694185	-2.3473898568	1.0664420118
O	-0.9615027683	-0.2254524589	3.9017350798
S	-1.9111196349	-5.3327691392	-0.2125130093
C	-3.5580293882	-5.0853550035	-0.3282047903
N	-4.713459556	-4.905049177	-0.4019257678
O	-2.7189773501	-4.3974499667	3.4421895673
O	3.4979932154	-0.3137937318	0.4891637529
C	1.3889528597	-1.0404519013	-1.7501370472
O	0.7089553545	-0.3817034521	-2.8049380656
H	-2.150975672	-2.2799537622	4.5748882527
H	-0.657337858	-2.2492946872	0.0442632844
H	1.7037434934	0.8433059113	-0.7840176753
H	2.0573064897	-1.7852655785	0.7092960947
H	1.785368488	1.0057002534	1.9176874643

H	1.5719881084	-0.5324578719	2.788882927
H	-0.5889198137	0.8292333644	1.7258948809
H	2.4456248751	-1.2058659569	-1.9996968265
H	0.9286349829	-2.0128068832	-1.5279764585
H	0.7313759166	-0.9416977495	-3.5898840365
H	4.0406284023	-0.7797602037	1.1368920462

D. Anionradical complex-2 forms of SCNdU

a) C3'-exo-front complex-2 E= -1326.04018073 G= -1325.868348

C	0.1271178858	-0.3047745752	0.1390288942
N	0.0115475111	0.0165220909	1.4408447292
C	1.1235181806	0.2791865147	2.2448035419
N	2.3313028375	0.2077855213	1.5969784202
C	2.5705301671	-0.0943294661	0.2563923289
C	1.3461352502	-0.3773138101	-0.524858326
C	-1.3184150099	0.0796188881	2.1367063636
O	-2.3061807559	-0.3766028573	1.2676045064
C	-3.1553645115	0.7147569156	0.8595864405
C	-3.12704836	1.6634284206	2.0509699687
C	-1.682040261	1.519760774	2.542827784
O	-4.0619652132	1.1711215975	2.997139765
C	-2.6558965575	1.355299266	-0.4248974702
O	-2.5527230673	0.361851009	-1.4152373597
O	1.0087836387	0.5499965387	3.4257169859

O	3.7115769212	-0.1109648573	-0.1655808487
S	1.4231603221	-0.7878925784	-2.1674949619
C	-1.1725932411	2.3828549566	-4.4223859478
N	-1.6304905452	1.7435767326	-3.5503682124
H	3.1462041751	0.4021407449	2.1711782997
H	-0.8058294816	-0.4972645048	-0.3872702589
H	-4.1485338207	0.2856114595	0.7042767496
H	-3.3662517956	2.69315519	1.7622908368
H	-1.5924311893	1.6698022713	3.6193141928
H	-1.0281880847	2.2397957236	2.0427638732
H	-1.2363266714	-0.6002895497	2.986641941
H	-3.36454388	2.1450709353	-0.7122049403
H	-1.6800747874	1.8405056251	-0.2489948255
H	-2.225190039	0.8075859304	-2.2417221239
H	-4.0402393327	1.7333371459	3.7816313091

b) C3'-exo-back complex-2 E= -1326.03362814 G= -1325.862149

C	-0.099053839	-0.0269901893	-0.5631964096
N	-0.0689207284	0.0134809179	0.7761765381
C	1.1273526685	0.1357781597	1.4873343809
N	2.2443491454	0.312955647	0.7111312295
C	2.3352303306	0.2518822234	-0.6762731208
C	1.0325722808	0.1083343339	-1.361063072
C	-1.2762302983	-0.2762037344	1.614369252

O	-2.3475490999	-0.5955037186	0.7772567426
C	-3.3289059462	0.4551892589	0.7980586781
C	-3.1985886399	1.0578076339	2.1915308721
C	-1.6928441916	0.9435480923	2.4548808985
O	-3.9572629994	0.2384011001	3.0658335107
C	-3.0828230565	1.4629158055	-0.3116513561
O	-3.0743264671	0.7488473211	-1.5366265689
O	1.1519247475	0.1195981157	2.7041362477
O	3.4236682814	0.332006107	-1.2178420282
S	0.9207361185	0.0651458035	-3.0497383331
C	1.5366129609	-2.9410345858	0.2388769025
N	0.6932042363	-2.8899877438	1.0575221885
H	3.1201206653	0.3828627239	1.2200052654
H	-1.0789902572	-0.1715022588	-1.0101928229
H	-4.2993824149	-0.0266683394	0.6556604088
H	-3.5482454048	2.0959021177	2.2268012862
H	-1.4682939646	0.7991601722	3.512408717
H	-1.1702470249	1.8427597266	2.1174605064
H	-1.0027669031	-1.1547385197	2.2013859496
H	-3.8831210687	2.2120507177	-0.2915925196
H	-2.1240852117	1.9811834052	-0.1571267629
H	-2.9682095366	1.3725544432	-2.2651892573
H	-3.8509182701	0.5624659432	3.9689830523

c) C3'-endo-front complex-2 E= -1326.03839646 G= -1325.868186

C	-0.2190803881	-0.1901883707	0.2966910792
C	0.0613312461	-0.0093589878	1.7865009711
O	1.4165613418	0.3089328323	1.9181643576
C	2.0356836661	0.427290297	0.6201701104
C	0.8724064285	0.6574884811	-0.3509278827
N	-0.7471303574	1.1245552607	2.3584428137
C	-0.201480637	2.3083125185	2.6867071368
C	-0.9229769576	3.376556286	3.2036623943
C	-2.3750785729	3.1791232751	3.410940951
N	-2.8312180003	1.9089684346	3.0605863513
C	-2.1077757038	0.8591781588	2.551003712
O	-2.5943213466	-0.2221170941	2.2805716403
O	-3.1537282883	4.0047609086	3.8484124131
S	-0.1683401658	4.8426593181	3.5902220706
C	2.4512719999	3.5811030605	-3.1003613695
N	2.0768080251	2.5280724651	-2.7402891337
C	3.0619983542	1.5297174507	0.6247316873
O	4.1333572474	1.1526365302	1.4738685039
O	1.1529700421	0.253006573	-1.6586919675
H	-3.8215520035	1.7295896121	3.1980389993
H	0.8686541166	2.3844814552	2.5342082006
H	2.5203228649	-0.5279738688	0.3760959467
H	0.5920558606	1.7242022177	-0.3295895938

H	-0.0555960198	-1.2383923079	0.0263007596
H	-1.2338654589	0.0920000445	0.0159438176
H	-0.1896273803	-0.8788228735	2.3954902614
H	3.3992658328	1.6734713276	-0.4107452897
H	2.5979985487	2.4666316208	0.9650970547
H	4.809677708	1.8395641532	1.4487316037
H	1.5152663638	1.0469274244	-2.1397557664

d) C3'-endo-back complex-2 E= -1326.02910139 G= -1325.861071

C	0.0477848922	-0.4496999985	1.0592397565
C	0.3924698738	0.5078921869	2.197041139
O	1.7555095219	0.8032599253	2.0823431952
C	2.3103581299	0.2240131944	0.8878752707
C	1.1044232877	-0.0999043162	0.0105398364
N	-0.3846564021	1.7871323063	2.0983535284
C	0.2074034328	2.9750445388	1.9174160969
C	-0.4623385639	4.1922023084	1.9697265378
C	-1.9054263579	4.1587963208	2.2913057927
N	-2.4162790926	2.877970094	2.4730611606
C	-1.7306517228	1.6894705891	2.4686198068
O	-2.2492959721	0.6194531527	2.7248842197
O	-2.6366915378	5.1273367534	2.3970433239
S	0.3507221449	5.6537892513	1.7040318152
C	-0.4050379003	2.2749633569	5.1977603989

N	-0.3485579689	2.214245807	6.37086505
C	3.298212106	1.1722427551	0.255830582
O	4.4162269742	1.2942039424	1.1174249775
O	1.4469359377	-1.1533431139	-0.8619986654
H	-3.3951273453	2.8128440443	2.735221176
H	1.2741602871	2.9427297222	1.730620296
H	2.8195250096	-0.7118659399	1.155472685
H	0.8048424916	0.7921008288	-0.5594546213
H	0.212239628	-1.4782735884	1.39529852
H	-0.981133342	-0.3479060434	0.7149515751
H	0.169139591	0.122668463	3.1942573705
H	3.5874730783	0.7540527136	-0.7176426556
H	2.8186332514	2.1461802082	0.0868142886
H	5.0578801557	1.892200565	0.7164926914
H	0.7545106624	-1.2546951881	-1.5264650818

E. Transition state between anionradical and complex-1 forms of SCNdU (TS-1); one imaginary frequency found, abstracting SCN⁻

a) C3'-exo-front TS-1 E= -1326.00014741 G= -1325.828665

C	0.0544798946	-0.3753804289	0.0299829978
N	0.033296293	-0.0900503456	1.4052474131
C	1.1862514404	-0.0167739807	2.1313058065
N	2.3430942181	-0.222084205	1.398020566
C	2.4610726554	-0.1363747672	-0.0001535518

C	1.2165578845	-0.375853934	-0.6949505641
C	-1.2173574587	0.3018525764	2.0702292688
O	-2.2951604439	-0.3986834555	1.4829424009
C	-3.2952468775	0.5087095503	1.0008527377
C	-3.0502579212	1.8082801432	1.7628922842
C	-1.5298949436	1.795613144	1.9104993473
O	-3.7098910289	1.6890924123	3.0149962781
C	-3.1993146605	0.7045730967	-0.5038755551
O	-3.2417966065	-0.5759371507	-1.1138223189
O	1.226164989	0.2171802715	3.3417841501
O	3.5760551876	0.0672431334	-0.4835764603
S	1.1583450042	0.506468857	-2.561208116
C	0.3013711164	1.8985640585	-2.184755112
N	-0.3344322772	2.7942155606	-1.7762346224
H	3.2024787228	-0.1357486435	1.9300994917
H	-0.9166513539	-0.6277899942	-0.3838502512
H	-4.2665552168	0.0756660657	1.2588549653
H	-3.4138558487	2.6833266501	1.2114140378
H	-1.1803302831	2.3841596694	2.7613932844
H	-1.056119544	2.178179722	0.9993145284
H	-1.1169923387	0.0062736245	3.1156590118
H	-4.0482247035	1.3226970927	-0.8239321015
H	-2.2704541341	1.2301399589	-0.7678814456
H	-3.1911648009	-0.4665693333	-2.0708879398

H -3.531511346 2.480000282 3.5392758961

b) C3'-exo-back TS-1 E= -1325.99735881 G= -1325.825794

C -0.5246572235 0.0656456779 -0.3681543784
N 0.4395590511 1.0871355059 -0.4855631778
C 0.0682058407 2.3962772064 -0.6034068521
N -1.2979880536 2.6158764835 -0.5329097208
C -2.2481037532 1.7230291161 -0.0020828464
C -1.8352091732 0.3442255844 -0.0866034935
C 1.8668186254 0.7701244739 -0.4149468495
O 2.1102638796 -0.4313648572 -1.1259205831
C 2.8056148509 -1.3809214569 -0.3094786696
C 3.4106573105 -0.564902048 0.8304163581
C 2.3615508327 0.529562655 1.016371743
O 4.6454438757 -0.0426592904 0.3622101259
C 1.8725412489 -2.4668985086 0.2030209878
O 1.1939178894 -3.0220118188 -0.9099047442
O 0.8582361084 3.3309557709 -0.7549650394
O -3.3173579212 2.1776735015 0.4104136063
S -2.7763618571 -0.8433409781 1.3275561764
C -4.2257664809 -1.1366170718 0.531351663
N -5.2278774054 -1.3349999776 -0.0346475433
H -1.5707074263 3.5917654237 -0.5775858375
H -0.1458921111 -0.9281916197 -0.5841429925

H	3.5867078891	-1.8281656637	-0.9317278724
H	3.5596924873	-1.1684707402	1.7334801297
H	2.7682276891	1.4356808915	1.4704325971
H	1.5363557377	0.1689369903	1.6393526666
H	2.3906303531	1.5939669313	-0.901773027
H	2.4759180781	-3.2238426799	0.7202350681
H	1.155486232	-2.0474642044	0.9238155832
H	0.6487354923	-3.7580486049	-0.6076882159
H	5.0356642312	0.5058400013	1.0544252759

c) C3'-endo-front TS-1 E=-1325.99797433 G=-1325.829065

C	0.0164057638	0.2614552252	-0.015442552
N	-0.0068679727	0.1258270934	1.3837965194
C	1.1366773205	-0.1605114929	2.0794410604
N	2.2820884989	-0.2083848854	1.3018601506
C	2.4277801662	0.3070527645	0.0015340348
C	1.1798592916	0.3882069961	-0.7206715013
C	-1.2433615522	0.3892415918	2.1155236807
O	-2.2761471005	-0.4109944013	1.5506218365
C	-3.4086723405	0.3932123893	1.2185542584
C	-2.844426124	1.8008113784	0.9869817247
C	-1.7110142389	1.8479515174	2.0041459639
O	-3.7843362578	2.8251474539	1.2472260168
C	-4.1107694247	-0.1947882956	0.0196230871

O	-4.699702428	-1.4279747942	0.3978680551
O	1.1839133995	-0.358169173	3.2940677941
O	3.560445457	0.5697504288	-0.4050344447
S	1.2241951732	1.7747666532	-2.2601837441
C	0.2727311402	2.9722179126	-1.5727164887
N	-0.4377167988	3.6956579347	-0.9868074467
H	3.1371974581	-0.3791868849	1.820216147
H	-0.962217308	0.2126518134	-0.4818957198
H	-4.1036649838	0.4311831574	2.0711713174
H	-2.4521110699	1.8963960674	-0.0346681024
H	-2.1251828815	2.1788017825	2.9617250288
H	-0.8994587569	2.5177361013	1.712796036
H	-1.0557893089	0.08528319	3.145172479
H	-4.8756886907	0.5166046269	-0.3214021914
H	-3.3803250278	-0.3381513427	-0.788821174
H	-5.1419653397	-1.8118557571	-0.3682957304
H	-4.266812383	3.0333515464	0.438782984

d) C3'-endo-back TS-1 E= -1325.99662644 G= -1325.828214

O	-0.1520886275	-1.8761535477	1.282273338
C	0.9295414637	-1.901103161	2.216181865
C	1.9773575221	-0.8996746375	1.6940153919
C	1.4643640388	-0.4973834737	0.307753149
C	-0.0388110149	-0.7337949283	0.4425566831

N	1.4162119386	-3.2636145297	2.3124418572
C	1.1251474032	-4.0015185104	3.4316464041
N	1.6256940592	-5.2913998045	3.4120189175
C	2.5914483019	-5.799773442	2.5230365121
C	2.6400713466	-5.0862698449	1.2693441804
C	2.0147255008	-3.872984941	1.1892477504
O	0.4856632056	-3.5821283678	4.3961336267
S	4.4747056057	-5.2901362266	0.3313954074
C	4.2169989551	-6.7583597141	-0.4442595668
N	4.0242925727	-7.7779488695	-0.9797276236
O	3.2344489154	-6.7950823756	2.8601516212
O	1.6835968991	0.8560455615	-0.0333707234
C	-0.7289068844	-0.9962288994	-0.8724177481
O	-2.130005224	-1.0272753612	-0.6509957767
H	1.4661220263	-5.8211976378	4.2618957182
H	1.903235652	-3.3149578593	0.2646475319
H	-0.4907523139	0.1457648217	0.9281115153
H	1.8717717441	-1.1547927788	-0.4734749264
H	1.9844001391	-0.008622487	2.3276795399
H	2.9807840701	-1.330265474	1.6835680593
H	0.5646415497	-1.6363055284	3.2087696149
H	-0.4568996202	-0.192507353	-1.5693829195
H	-0.3702523366	-1.9534521675	-1.274607064
H	-2.5747571666	-1.2148479577	-1.4857044317

H 2.6103118967 0.9768453878 -0.2727660354

F. Transition state between anionradical and complex-2 forms of SCNdU (TS-2); one imaginary frequency found, abstracting CN⁻

a) C3'-exo-front TS-2 E= -1326.00740459 G= -1325.836037

C 0.0380384969 -0.128631945 0.0110077836

N 0.015469533 -0.0210199959 1.4063634146

C 1.1518129253 0.0789694795 2.1509986616

N 2.3328503866 -0.0047902647 1.4323201756

C 2.4897283294 0.0152370602 0.0396183561

C 1.2545852818 -0.1682502592 -0.6882802321

C -1.2570081727 0.2358121044 2.0986008748

O -2.3003555127 -0.4294610408 1.4185059471

C -3.3341991764 0.4881173344 1.0382469137

C -3.1484618708 1.6950097756 1.954269027

C -1.6304411716 1.724333169 2.125720266

O -3.8149134587 1.4011548555 3.1734395754

C -3.2379688784 0.8687918008 -0.4308865299

O -3.209111015 -0.3270353387 -1.1923168867

O 1.1610154977 0.2421867984 3.3740091177

O 3.6257208226 0.148447621 -0.4188295346

S 1.2805455619 -0.1034748553 -2.4099629395

C 0.7009595471 1.6282385246 -2.744033921

N 0.1863149074 2.6315885673 -2.4241480877

H	3.1780508289	0.0985102767	1.9815120085
H	-0.9092937303	-0.3741585405	-0.4505226142
H	-4.2881330803	-0.0123046028	1.2298371382
H	-3.5419701177	2.6152217674	1.506758862
H	-1.3187296747	2.2098205041	3.0527287037
H	-1.1571963285	2.2408870295	1.2838678128
H	-1.1512976897	-0.1828762222	3.100187155
H	-4.112713965	1.4807657036	-0.6858505431
H	-2.3314782765	1.4631005635	-0.6139182205
H	-3.1703017278	-0.0986147231	-2.1287609575
H	-3.674694504	2.1305915808	3.790372859

b) C3'-exo-back TS-2 E= -1326.00527568 G= -1325.835408

C	0.0393413874	-0.0939128699	-0.0825500623
N	0.0236857798	0.0011766651	1.3139641783
C	1.1535564616	0.1838851136	2.0482798318
N	2.334827192	0.1606660234	1.324816121
C	2.4948218458	0.0285721159	-0.0598472568
C	1.2501240553	-0.007540422	-0.7976028609
C	-1.2540098876	0.1380579777	2.0337158731
O	-2.2702612077	-0.5230888596	1.3125584101
C	-3.3500797315	0.3707976102	1.0103991887
C	-3.2158061928	1.5083768367	2.0187790421
C	-1.6990151072	1.599157553	2.1820912414

O	-3.8558628289	1.0845446986	3.2131970386
C	-3.2832715148	0.8696288915	-0.4245432643
O	-3.2037591734	-0.2602332437	-1.2765500551
O	1.1571003531	0.3601295721	3.2708489271
O	3.6397887696	-0.029910982	-0.5117800976
S	1.2996306939	-0.3272995703	-2.483535928
C	1.0316629064	-2.1779273115	-2.5391250093
N	0.7493033898	-3.2232705771	-2.0945592073
H	3.1807546811	0.2711198775	1.8711129103
H	-0.9180863642	-0.2579975971	-0.555820533
H	-4.2769741899	-0.1899346985	1.1641193602
H	-3.6579959852	2.4407694394	1.6485142957
H	-1.3992377637	2.0255552058	3.1412399502
H	-1.2627391947	2.2039940401	1.3804788815
H	-1.1166092734	-0.3510191153	2.9996045099
H	-4.1864806871	1.4590079246	-0.6274957312
H	-2.4072564843	1.5192253008	-0.5633122433
H	-3.1964843131	0.0393583469	-2.1935226272
H	-3.728264115	1.7577331969	3.8934688715

c) C3'-endo-front TS-2 E= -1326.00583869 G= -1325.836719

C	0.0307905299	0.2136613648	0.0459309567
N	-0.0290343535	-0.2729018403	1.322168263
C	1.1130322454	-0.4122691495	2.120021766

C	2.3858916036	-0.07682718	1.6434075844
C	2.521817577	0.341475501	0.2646028016
N	1.2980244441	0.5771065298	-0.37675697
C	-1.2868096304	-0.8529001159	1.7888549698
C	-1.2518800446	-2.3881566701	1.8921916637
C	-1.1536700879	-2.6599195869	3.3946223985
C	-1.8534192103	-1.4356647409	3.98372046
O	-1.5399562594	-0.3625418696	3.0986015368
C	-1.4004071369	-1.096075139	5.3817244221
O	-2.2241445497	-0.0584213457	5.888393322
O	-1.8316186469	-3.8205328599	3.8312896508
S	3.8009868558	-0.4628100209	2.5476620674
C	3.7899428619	-2.3248022929	2.4999397353
N	3.2327884698	-3.343717295	2.336392286
O	3.560346379	0.5398317978	-0.3657505266
O	-0.9407775051	0.3284969999	-0.7021788581
H	1.3505100904	0.9080578768	-1.3331217823
H	0.9241666925	-0.6167016853	3.1650238431
H	-2.9388330756	-1.6189554144	3.9831891391
H	-0.1041935967	-2.6866322523	3.7215045106
H	-2.1963349728	-2.8039102331	1.529400144
H	-0.4280919657	-2.8126246953	1.3138689382
H	-2.0537792384	-0.5006294023	1.1000537113
H	-1.4825062017	-2.0023131879	5.9963458018

H -0.3472636978 -0.7836774001 5.3507737322
H -1.9383377372 0.158375461 6.7834835016
H -1.3087038146 -4.5975723579 3.6000288508

d) C3'-endo-back TS-2 E= -1326.00482254 G= -1325.834167

C 0.0975665012 0.3498862468 0.0942187404
N 0.1147522901 0.1741816606 1.4852888857
C 1.2569463534 0.3796493979 2.2180817952
N 2.3406840228 0.8460711289 1.4960511801
C 2.4740150738 0.9419069486 0.1044843273
C 1.2271583226 0.7816398606 -0.6111420819
C -0.976309258 -0.5337440538 2.1469129462
O -0.8049970562 -1.9346846068 1.9423956251
C -1.9697338461 -2.51922265 1.3605896889
C -2.7378922378 -1.3590557735 0.7106978355
C -2.371531505 -0.1893616855 1.6190050044
O -4.1392971648 -1.5456771393 0.7116002315
C -1.5605064346 -3.5933122738 0.381695255
O -0.9972140528 -4.6757602865 1.1060474542
O 1.346846046 0.1813600229 3.4288122402
O 3.5881910967 1.1770164329 -0.3619154897
S 1.2399987686 0.8014610689 -2.3328416281
C 1.1737735626 -1.0188690887 -2.7374680354
N 0.9599314371 -2.1305906701 -2.4318363625

H	3.1865531813	0.9840527279	2.0368806825
H	-0.8711320644	0.2998601629	-0.3809890057
H	-2.5997350662	-2.9559931345	2.1499947658
H	-2.3802233783	-1.2043535812	-0.3166025852
H	-3.0762032405	-0.1900366232	2.456032393
H	-2.4182125832	0.7869392223	1.1339965832
H	-0.8693247754	-0.31375678	3.2079206639
H	-2.450605615	-3.9207174537	-0.1744542293
H	-0.8361291034	-3.1677483864	-0.3270937691
H	-0.6674158554	-5.3314981298	0.4807087142
H	-4.3928770521	-2.0918943467	-0.0420861128

G. Radical rad-dU, formed via abstracting SCN⁻ from anionradical SCNdU

a) C3'-exo rad-dU E= -834.866664494 G= -834.696449

C	-0.0555613029	-0.247065744	0.0768000205
C	0.038873771	-0.0824906199	1.6026956464
O	1.3975980861	-0.0573972263	1.9388200732
C	2.2106797067	-0.0134418593	0.753845053
C	1.3583326139	-0.6873006692	-0.3145190076
N	-0.5987756554	1.1798979373	2.0752165991
C	0.1335517471	2.2464930991	2.5549013375
C	-0.4928686854	3.3533328509	2.9675198173
C	-1.9206579721	3.5281731055	2.9664249293
N	-2.5602326825	2.3830414401	2.4760962499

C	-1.9781464272	1.2145547594	2.0234026105
O	-2.6386236172	0.2739203467	1.6030572245
O	-2.5665062442	4.501821336	3.3255468183
C	2.5872903377	1.4141234678	0.3969314816
O	3.2099473035	1.9862379883	1.535092085
O	1.5412969575	-2.0858866127	-0.1646475284
H	-3.5748924123	2.4071312218	2.432552469
H	1.2132492687	2.1130293784	2.5659957078
H	3.1110918495	-0.5921845976	0.9749098926
H	1.630816417	-0.3628210805	-1.325167167
H	-0.8117914487	-0.9800131007	-0.2068084705
H	-0.3105834438	0.7062676514	-0.3950202525
H	-0.4534530238	-0.8902918184	2.148062306
H	3.2674669369	1.3929430312	-0.4625857936
H	1.6936946749	1.9906955961	0.1136715326
H	3.5520394637	2.8577326796	1.3018477315
H	0.9880423963	-2.5460569592	-0.8083430525

b) C3'-endo rad-dU E= -834.863865038 G= -834.695870

C	0.1151921923	-0.5063800275	0.1738276203
N	-0.0171834827	0.0886630451	1.4149115796
C	1.0423805806	0.7353790156	2.0147892279
C	2.2342813271	0.7796253562	1.4133242167
C	2.5118487618	0.2044782232	0.1232733403

N	1.3674230998	-0.4067362401	-0.4023365971
C	-1.3626031007	-0.0199175433	2.0512383237
C	-1.6076018855	-1.4077322882	2.6450258524
C	-1.1958403174	-1.2183012965	4.1056762804
C	-1.6385586682	0.2197374145	4.3603863744
O	-1.4206668387	0.8971464063	3.1126069889
C	-0.8860249627	0.9109454092	5.4693512332
O	-1.4665729704	2.1860921013	5.678734373
O	-1.8517637375	-2.0664013886	5.0212579591
O	3.564295711	0.207851921	-0.4966350258
O	-0.8118224045	-1.0852428185	-0.3750448934
H	1.4590604141	-0.8423095207	-1.315540372
H	0.825351583	1.2011975528	2.9693680648
H	-2.7138041721	0.2268170135	4.5878520668
H	-0.1044434471	-1.298405333	4.2181871544
H	-2.6777364142	-1.6342487318	2.6102196269
H	-1.0612854737	-2.1909015651	2.1180790094
H	-2.0810973675	0.2494616326	1.2755320464
H	-0.96301643	0.2840146095	6.3673886162
H	0.1747902748	0.9983747719	5.1971893685
H	-1.0092698998	2.6237223054	6.4064613072
H	-1.4519634436	-2.9437093957	4.9836393506

H. Radical rad-S-dU formed via abstracting CN⁻ from anionradical SCNdU

a) C3'-exo rad-S-dU E= -1233.09375526 G= -1232.922596

C	-0.0532578282	-0.4065215421	0.0772541843
N	-0.0551628007	0.0568021352	1.3402580199
C	1.1164956198	0.4599824077	1.9877273562
N	2.2572276575	0.3498168094	1.2325942948
C	2.3764225062	-0.0962889891	-0.0836305365
C	1.0940660957	-0.5035789966	-0.7004022518
C	-1.3114890963	0.1672786524	2.1525795184
O	-2.3507105031	-0.4568211777	1.4632507413
C	-3.3273576069	0.5111816463	1.0372996623
C	-3.2178449566	1.6285692232	2.0679318643
C	-1.7172612801	1.6345983723	2.3782345814
O	-3.9901087278	1.2295416539	3.1875772289
C	-3.0554166278	0.9807550982	-0.3816295294
O	-3.0029308449	-0.1717979245	-1.2050446069
O	1.1020766541	0.8741313484	3.1314725776
O	3.4689619619	-0.1258010133	-0.617470703
S	1.0213470665	-1.068187839	-2.2966021751
H	3.1148747507	0.6387518795	1.6936956056
H	-1.0201988131	-0.7052542414	-0.3196608425
H	-4.2975636943	0.0104784839	1.0855956211
H	-3.5638300505	2.5904883939	1.6732036106
H	-1.5043384671	1.9612858194	3.3965455605
H	-1.1805568785	2.2935740481	1.6897397106

H	-1.1109713473	-0.3721395641	3.0797775773
H	-3.8620403139	1.6567625827	-0.6886380399
H	-2.1068297924	1.5371761441	-0.4313664429
H	-2.9105912001	0.1010601468	-2.1260617135
H	-3.9115064145	1.8980457912	3.8796666979

b) C3'-endo rad-S-dU E= -1233.09032133 G= -1232.921436

C	-0.0388237896	-0.3703762332	0.2538035321
C	0.1094865939	-0.0798623637	1.7470922781
O	1.4762219496	0.0562475358	2.0087676916
C	2.2450335698	-0.0573690965	0.7979943319
C	1.2498371103	0.2171239417	-0.3260670192
N	-0.5731456875	1.2032966446	2.1304569222
C	0.1056747082	2.3199284225	2.4480053056
C	-0.4996962722	3.5168805129	2.8064821047
C	-1.9793429764	3.5446722885	2.8509440195
N	-2.5801991652	2.3286301463	2.5268408443
C	-1.9711962036	1.1493262865	2.1778371973
O	-2.5806218503	0.1282227488	1.922940605
O	-2.6676161541	4.5039193633	3.141311868
S	0.4185840672	4.8872921735	3.1916618806
C	3.41742592	0.8904017626	0.8316298067
O	4.321229193	0.449285218	1.8290515616
O	1.7083592255	-0.4132699778	-1.5003914827

H	-3.5950673641	2.3010132531	2.5609491623
H	1.1853641647	2.2311889078	2.4223114148
H	2.610051463	-1.0896479787	0.7076232372
H	1.1504687424	1.3010149637	-0.4830456572
H	-0.0319412297	-1.4533341562	0.09779019
H	-0.95458133	0.0422877445	-0.1699989323
H	-0.3306074339	-0.8449834713	2.3878770488
H	3.883349093	0.8797336036	-0.1626738555
H	3.0643312514	1.9100446756	1.0384561906
H	5.0823145606	1.041335421	1.8462937957
H	1.2107861504	-0.0803529124	-2.2569701916

I. Anion SCN⁻ E= -491.135262236 G= -491.144665

C	0.1692315331	0.0000000082	-0.0172374042
N	-0.0885615562	0.	1.1284008604
S	0.5349662812	0.	-1.6446101736

J. Anion CN⁻ E= -92.9322830053 G= -92.946331

C	0.	0.	-0.0091755211
N	0.	0.	1.1671755211