

Supplementary Information

MMP-2/9-Specific Activatable Lifetime Imaging Agent. *Sensors* 2015, 15, 11076-11091

Marcus T.M. Rood ¹, Marcel Raspe ², Jan Bart ten Hove ^{1,3}, Kees Jalink ², Aldrik H. Velders ^{1,3}
and Fijs W.B. van Leeuwen ^{1,3,*}

- ¹ Interventional Molecular Imaging Laboratory, Department of Radiology, Leiden University Medical Center, Leiden 2300RC, The Netherlands; E-Mails: m.t.m.rood@lumc.nl (M.T.M.R.); janbart.tenhove@wur.nl (J.B.H.); aldrik.velders@wur.nl (A.H.V.)
 - ² Division of Cell Biology I, Netherlands Cancer Institute, Amsterdam 1066CX, The Netherlands; E-Mails: m.raspe@nki.nl (M.R.); k.jalink@nki.nl (K.J.)
 - ³ Laboratory of BioNanoTechnology, Wageningen University, Wageningen 6700EK, The Netherlands
- * Author to whom correspondence should be addressed; E-Mail: f.w.b.van_leeuwen@lumc.nl; Tel.: +31-71-526-6029.

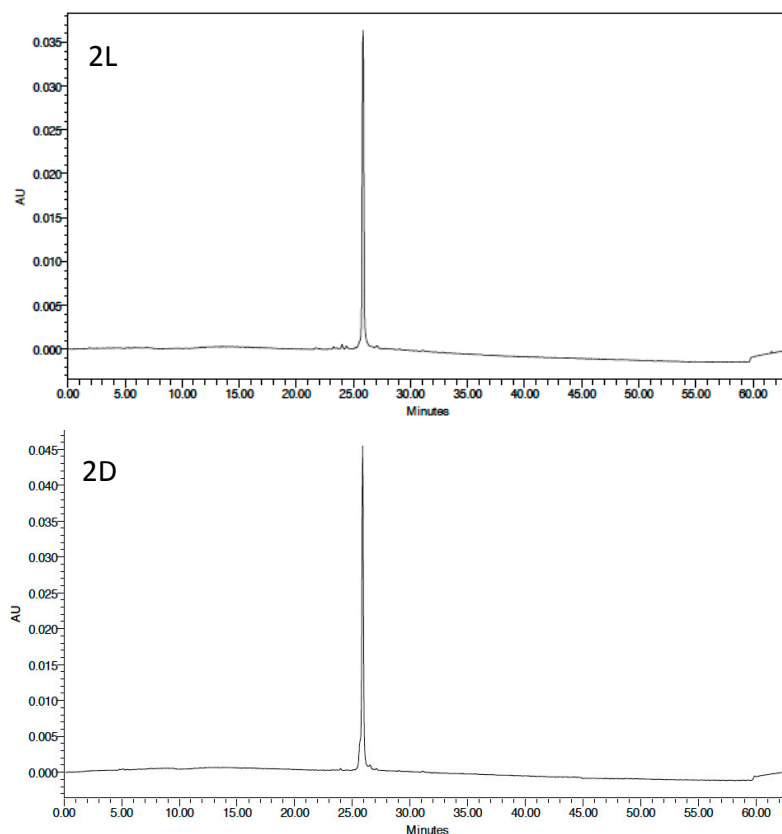


Figure S1. Cont.

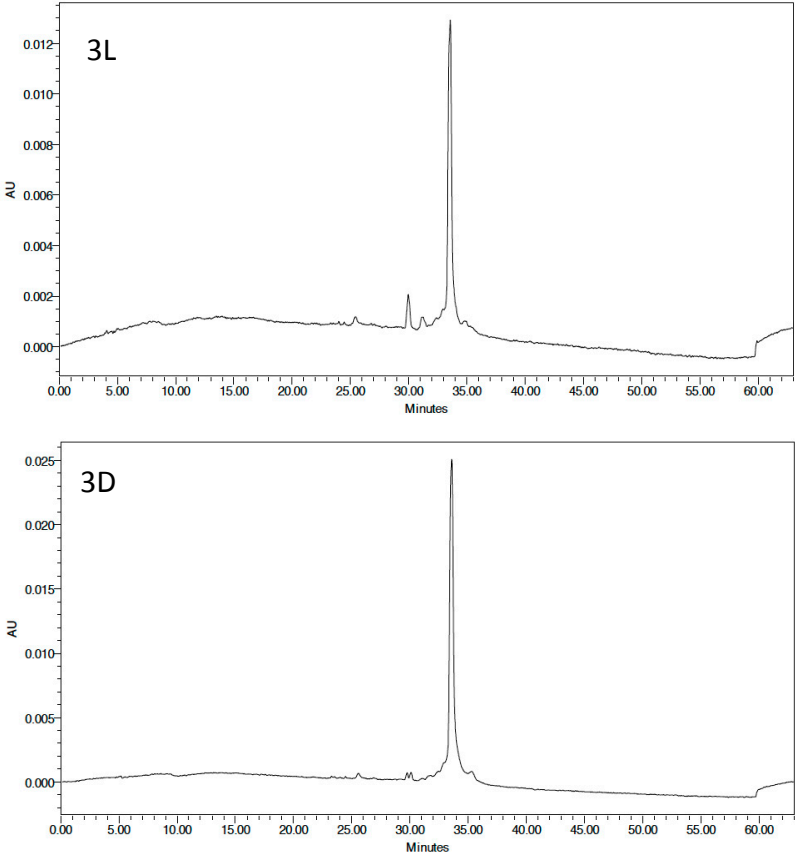


Figure S1. HPLC traces of the compounds used in this study.

© 2015 by the authors; licensee MDPI, Basel, Switzerland. This article is an open access article distributed under the terms and conditions of the Creative Commons Attribution license (<http://creativecommons.org/licenses/by/4.0/>).