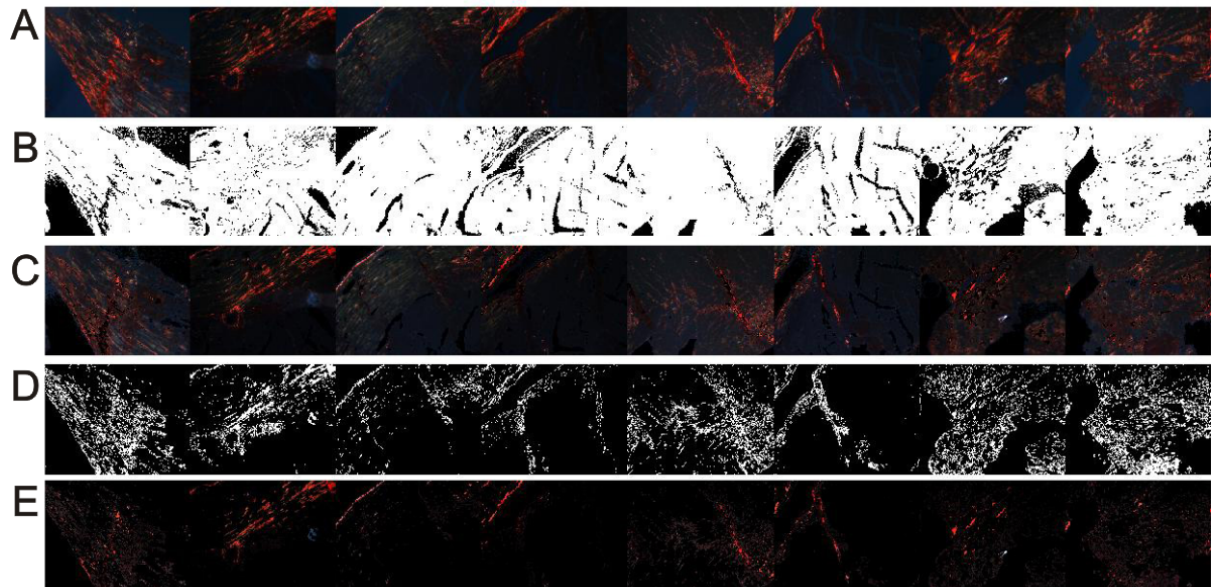


**Supplemental information to:**  
**Assessment of myocardial fibrosis in mice using a T2\*-weighted 3D**  
**radial magnetic resonance imaging sequence**

Bastiaan J. van Nierop, Noortje A.M. Bax, Jules L. Nelissen, Fatih Arslan, Abdallah G. Motaal,  
Larry de Graaf, Jaco J.M. Zwanenburg, Peter R. Luijten, Klaas Nicolay, Gustav J. Strijkers

**Supplemental Figure 2: Collagen fractional area determined from histology.**



Representative stack of ten Picrosirius stained slices of a TAC heart (A). A custom-built color detection algorithm was used to define a mask (B) removing the background from the histological images (C). To this end, the original RGB images (red-green-blue) were converted to HSV images (hue-saturation-value) and signal intensity thresholds were applied to the different HSV channels. Next, a mask (D) was defined to select the collagen (E). The HSV thresholds were determined empirically and proper selection of the heart and collagen rich area were confirmed by inspection.