

The antimicrobial propeptide hCAP-18 plasma levels in neutropenia of various aetiologies: a prospective study

Ying Ye<sup>1,5</sup>, Göran Carlsson<sup>2</sup>, Jenny M. T. Karlsson-Sjöberg<sup>3</sup>, Niels Borregaard<sup>4</sup>, Thomas U. Modéer<sup>1</sup>, Mats L. Andersson<sup>3</sup>, Katrin L-A. Pütsep<sup>3\*</sup>

<sup>1</sup>Division of Paediatric Dentistry, Department of Dental Medicine, Karolinska Institutet, Huddinge, Sweden

<sup>2</sup>Childhood Cancer Research Unit, Department of Women's and Children's Health, Karolinska University Hospital, Karolinska Institutet, Stockholm, Sweden

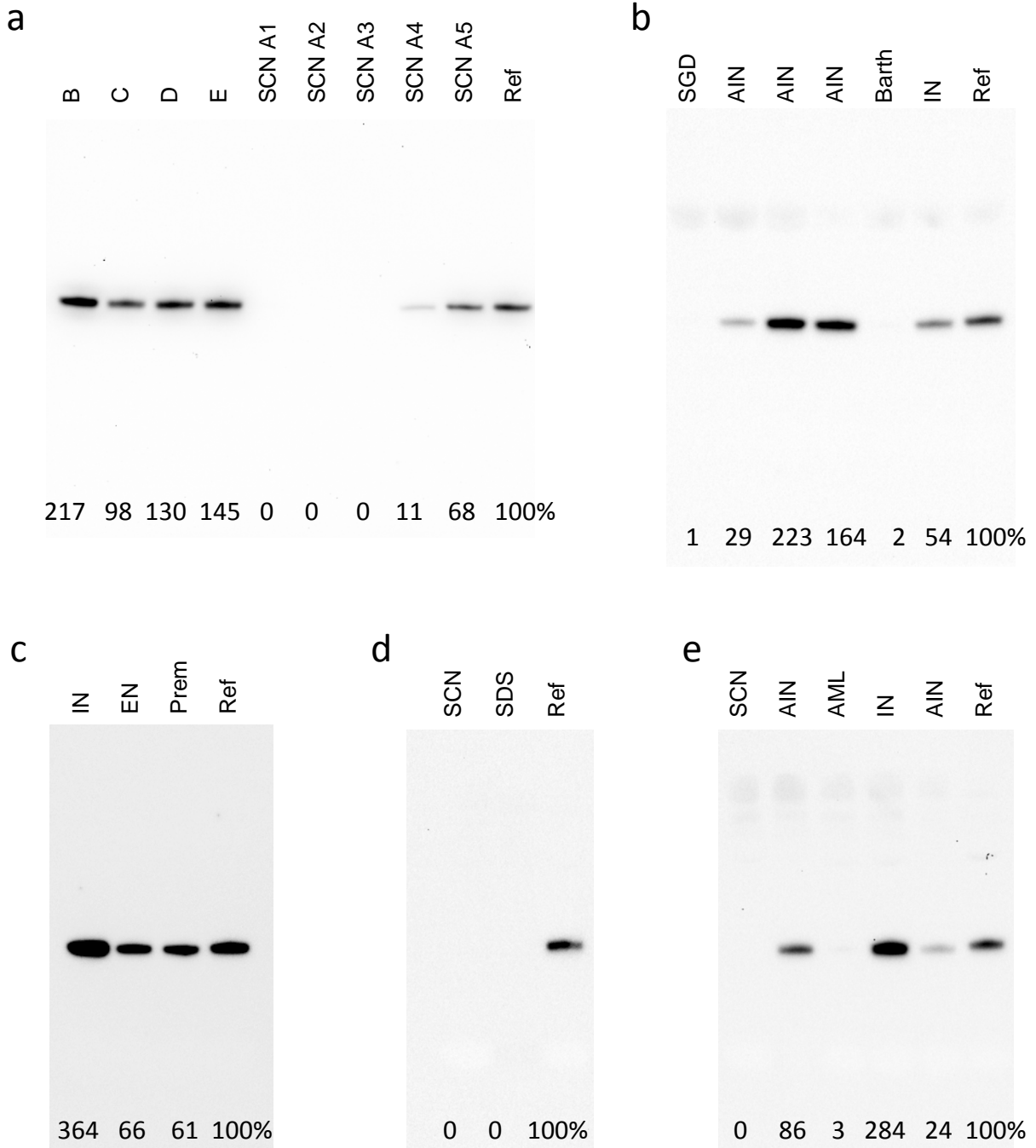
<sup>3</sup>Department of Microbiology, Tumour and Cell Biology, Karolinska Institutet, Stockholm, Sweden

<sup>4</sup>The Granulocyte Research Laboratory, Department of Haematology, National University Hospital, University of Copenhagen, Copenhagen, Denmark

<sup>5</sup>School and Hospital of Stomatology, Peking University, Beijing, China

\*Corresponding author:  
Katrin Pütsep, Associate Professor  
M1:02, Karolinska University Hospital  
171 76, Stockholm  
Sweden  
Telephone: +46 8-524 871 13  
Fax: +46-8-51771220  
Email: [katrin.putsep@ki.se](mailto:katrin.putsep@ki.se)

**Supplementary figure 1. Representative Western blots detecting hCAP-18 in blood plasma**



**(a)** Patient with severe congenital neutropenia (SCN A) and healthy family members B, C, D, E. Lanes SCN A1-A3 are collected from three different occasion with six months apart from the patient SCN A and samples SCN A4 in conjunction with hematopoietic stem cell transplantation and SCN A5 three months later.

**(b-e)** Patients with chronic neutropenia of various etiologies. Above each lane are the abbreviation for the established diagnosis, AIN; Autoimmune neutropenia, IN; Idiopathic neutropenia, EN; Ethnic neutropenia, SCN; Severe congenital neutropenia, SGD; Neutrophil specific granule deficiency, Barth; Barth syndrome, SDS; Shwachman-Diamond syndrome, AML; Acute myeloid leukemia, Prem; Premature infant. The number at the bottom of each lane corresponds to % of standard reference (Ref) serum sample, determined by Image lab software (BioRad).