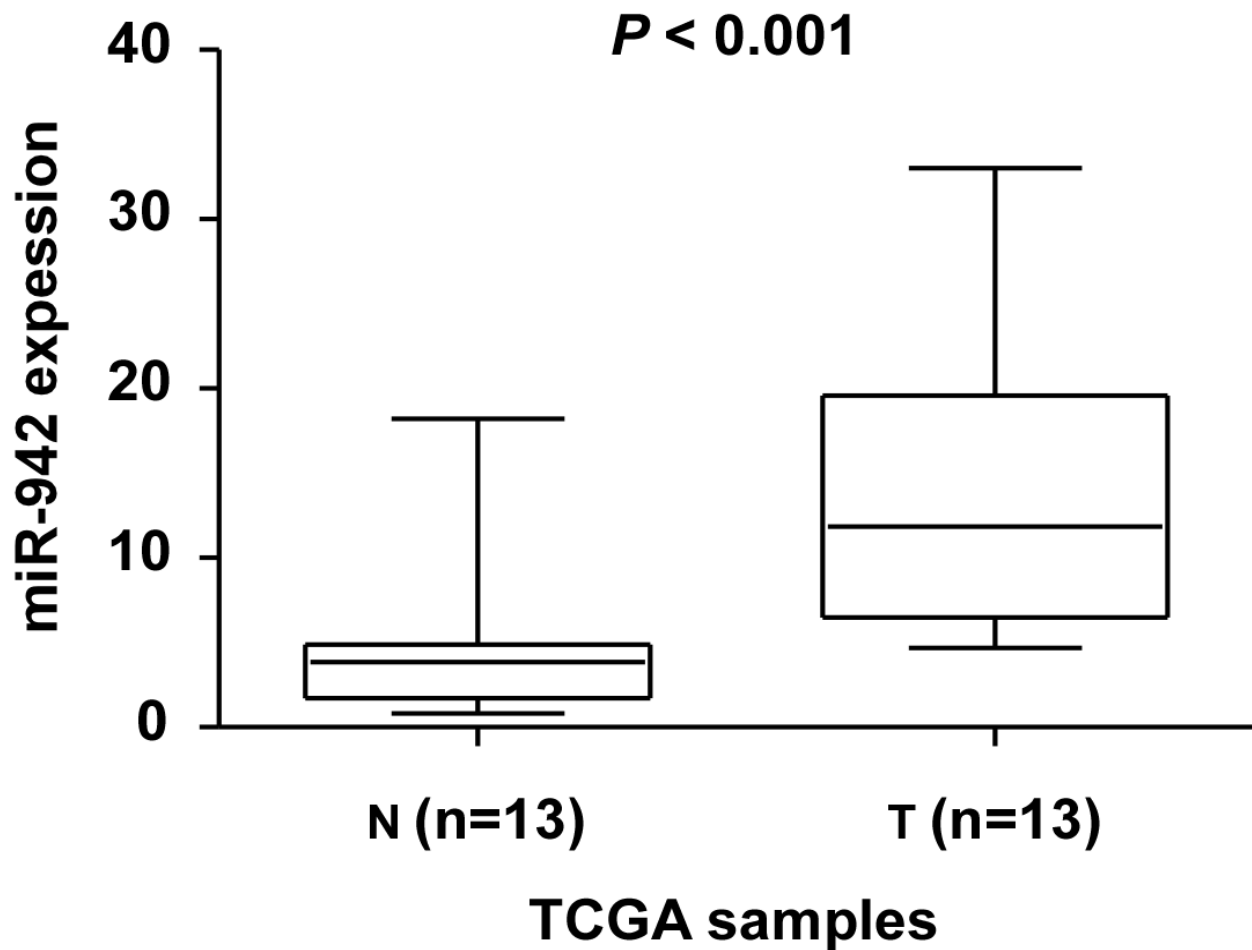
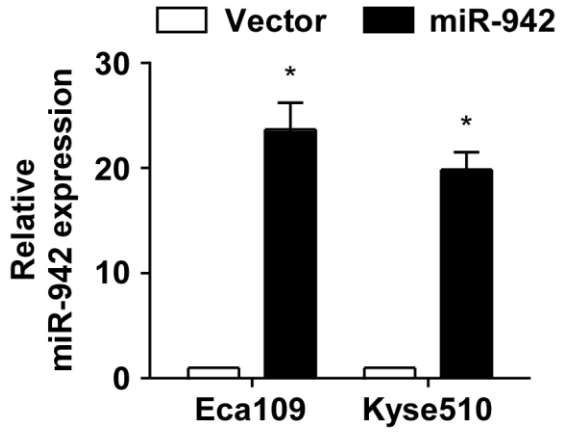
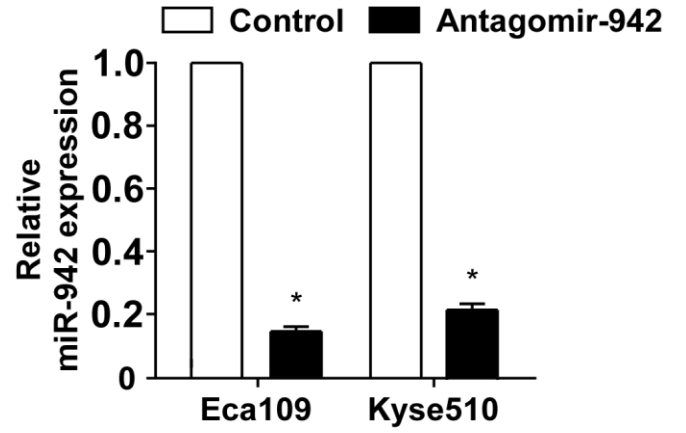


miR-942 promotes cancer stem cell-like traits in esophageal squamous cell carcinoma through activation of Wnt/ β -catenin signalling pathway

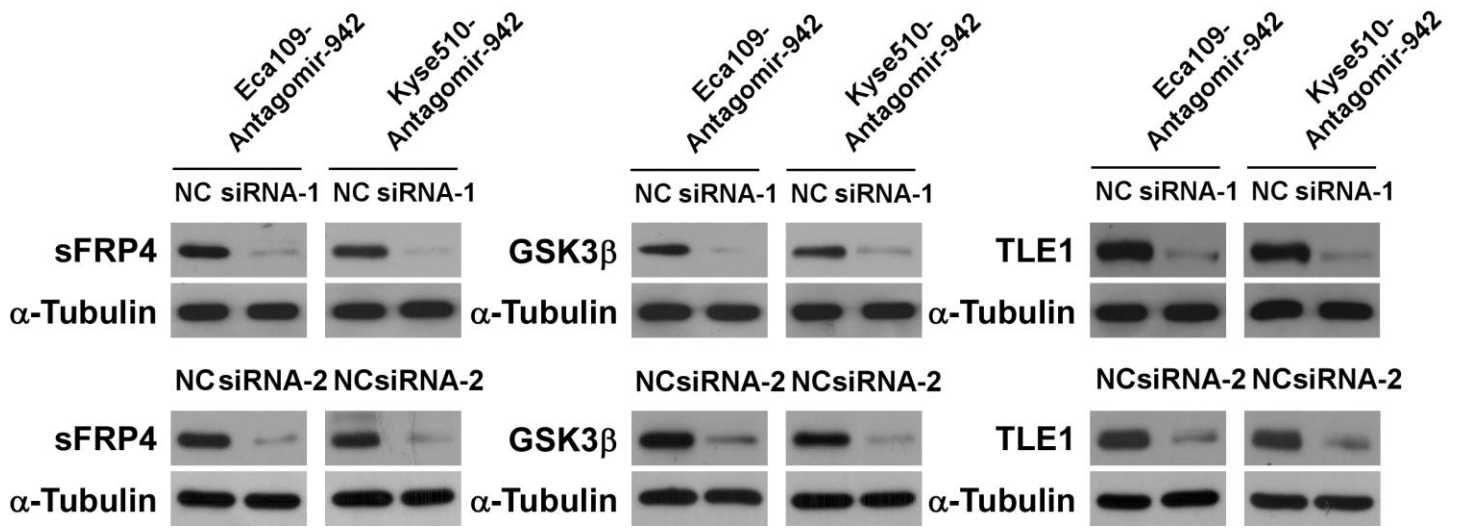
Supplementary Material



Supplementary Figure 1. Expression profiling of miR-942 from the Cancer Genome Atlas (TCGA) datasets in paired primary esophageal tumors (T) and the adjacent normal tissues (ANT) (n = 13; $P < 0.001$).

A**B**

Supplementary Figure 2. Relative miR-942 expression in miR-942-overexpressing (A) or miR-942-silenced cells (B). Each bar represents the mean \pm SD of three independent experiments. * $P < 0.05$.



Supplementary Figure 3. Western blot analysis of the expression levels of sFRP4, GSK3β, and CtBP2 expression in antagomir-942 cells which transfected with sFRP4-siRNA (left panel), GSK3β-siRNA (middle panel), or CtBP2-siRNA (right panel). α-Tubulin served as the loading control.

Supplementary Table 1. Clinicopathological characteristics and expression of miR-942 in studied ESCC patients

Factor	No.	(%)
Gender		
Male	116	73.4
Female	42	26.6
Age (years)		
≤57	89	56.3
>57	69	43.7
Clinical stage		
I	20	12.7
II	69	43.7
III	53	33.5
IV	16	10.1
T classification		
T ₁	18	11.3
T ₂	49	31.0
T ₃	83	52.5
T ₄	8	5.0
N classification		
N ₀	86	54.4
N ₁	72	45.6
M classification		
No	144	91.1
Yes	14	8.9
Histological differentiation		
Well	47	29.7
Moderate	66	42.0
Poor	45	28.3
Vital status		
Alive	54	34.2

Dead	104	65.8
<hr/>		
Expression of miR-942		
Low expression	79	50.0
High expression	79	50.0
<hr/>		

Supplementary Table 2. Correlation between the clinicopathological features and expression of miR-942

Patient characteristics		miR-942 expression		P-value
		Low	High	
Gender	Male	57	59	0.552
	Female	22	20	
Age (years)	≤57	49	50	0.612
	>57	30	29	
Clinical stage	I	14	6	< 0.001
	II	30	39	
	III	16	37	
	IV	5	11	
T classification	T ₁	10	8	0.005
	T ₂	22	27	
	T ₃	34	49	
	T ₄	3	5	
N classification	N ₀	51	35	< 0.001
	N ₁	23	49	
M classification	No	70	74	0.004
	Yes	4	10	
Histological differentiation	Well	27	20	0.045
	Moderate	24	42	
	Poor	16	29	
Vital status	Alive	30	24	< 0.001
	Dead	35	69	

Supplementary Table 3. Univariate and multivariate analysis of different prognostic parameters in patients with ESCC by Cox-regression analysis

	Univariate analysis		Multivariate analysis	
	<i>P</i>	Hazard ratio (95% CI)	<i>P</i>	Hazard ratio (95% CI)
Clinical stage				
I	<0.001	1.985 (1.435-2.529)	0.312	1.314 (0.953-2.043)
II				
III				
IV				
miR-942 expression				
Low expression	<0.001	2.931 (2.223-4.012)	<0.001	2.352 (1.820-3.380)
High expression				