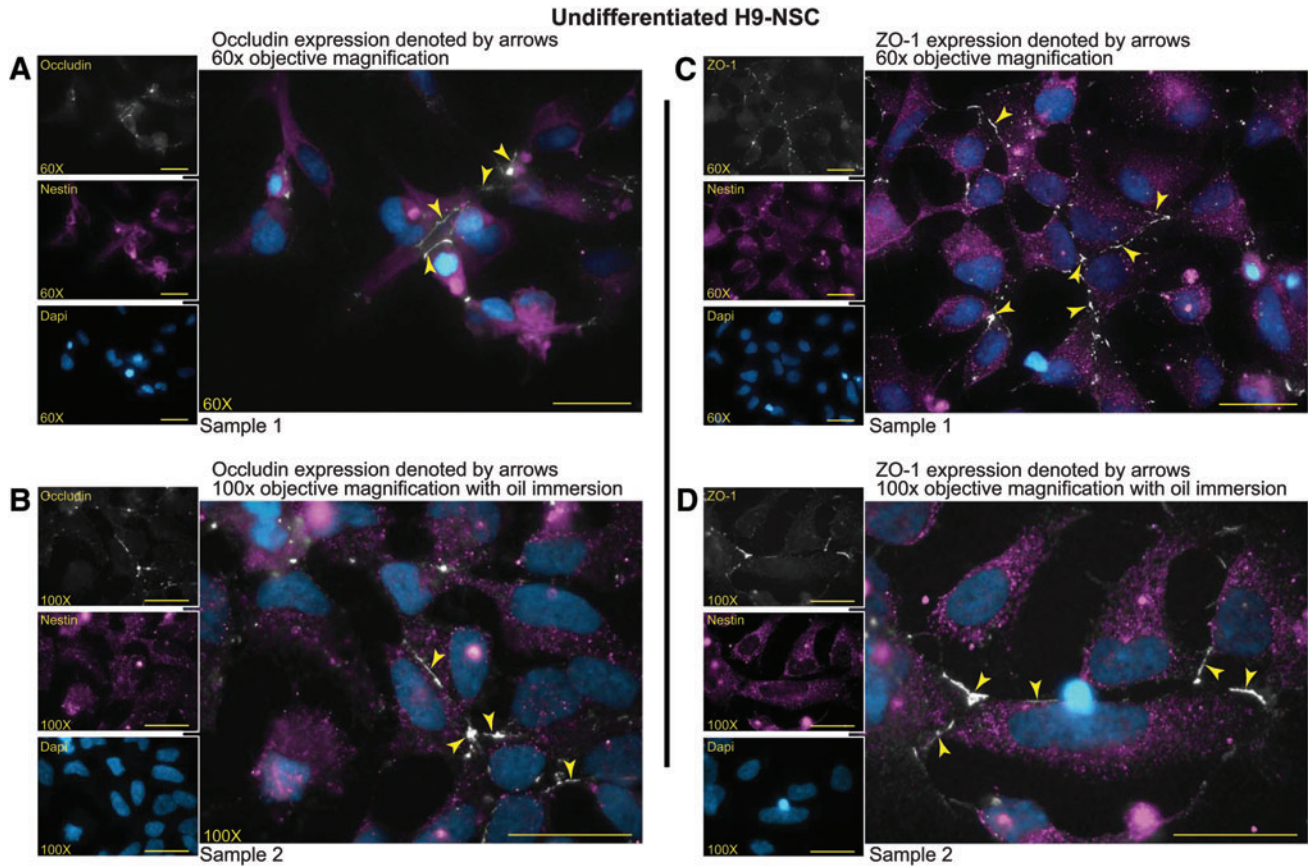


Supplementary Data



SUPPLEMENTARY FIG. S1. Membranous expression and morphological appearance of occludin and ZO-1. Undifferentiated H9-neural stem cells (NSCs) were seeded and double immunostained for occludin and Nestin (**A, B**) or ZO-1 and Nestin (**C, D**). High-magnification images show membranous expression of occludin with morphological localization to intercellular regions (**A, B, arrows**). Occludin appears to have a continuous pattern at cellular junctions, whereas ZO-1 is more intermittent (**C, D, arrows**). Although ZO-1 is a cytosolic protein, its close association with tight junction proteins (TJPs) makes ZO-1 appear membrane bound. Occludin or ZO-1 immunostaining is shown in *white*, Nestin in *magenta*, and DAPI in *cyan*, objective magnifications are 60 \times or 100 \times (oil immersion) and scale bars at 25 μm .