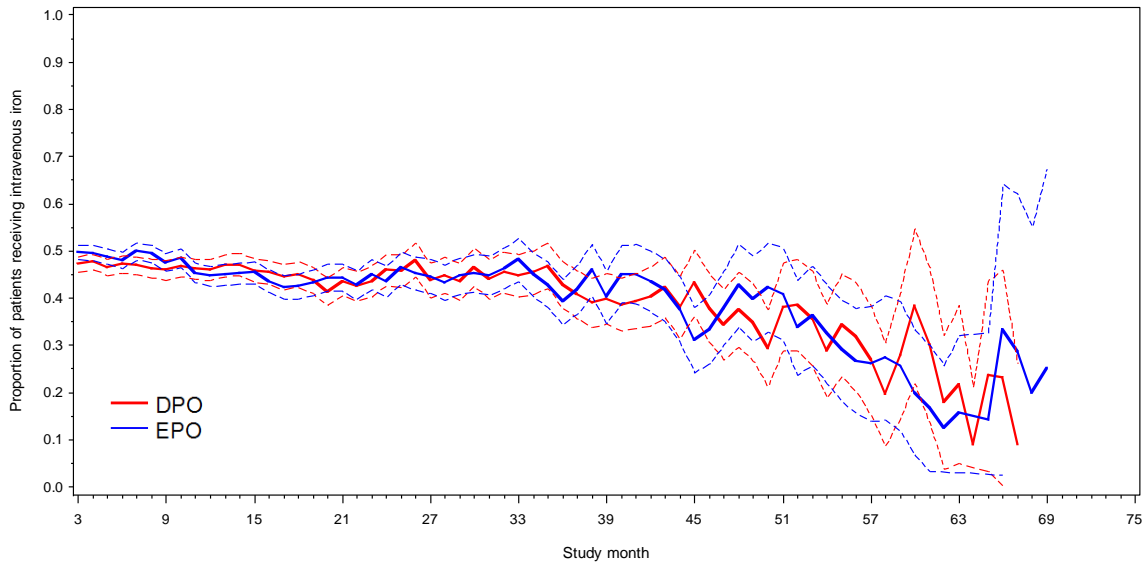


Figure S4: Monthly proportions and corresponding 95% confidence bands of intravenous iron use among Medicare A&B beneficiaries, from day 91 onwards



Note: Since Medicare Parts A&B coverage is required for the ascertainment of iron use from claims, the population corresponds to the one of 9455 incident hemodialysis patients used to evaluate non-fatal outcomes.

Winkelmayer et al, AJKD, "Longer-term Outcomes of Darbepoetin Alfa Versus Epoetin Alfa in Patients With ESRD Initiating Hemodialysis: A Quasi-experimental Cohort Study"