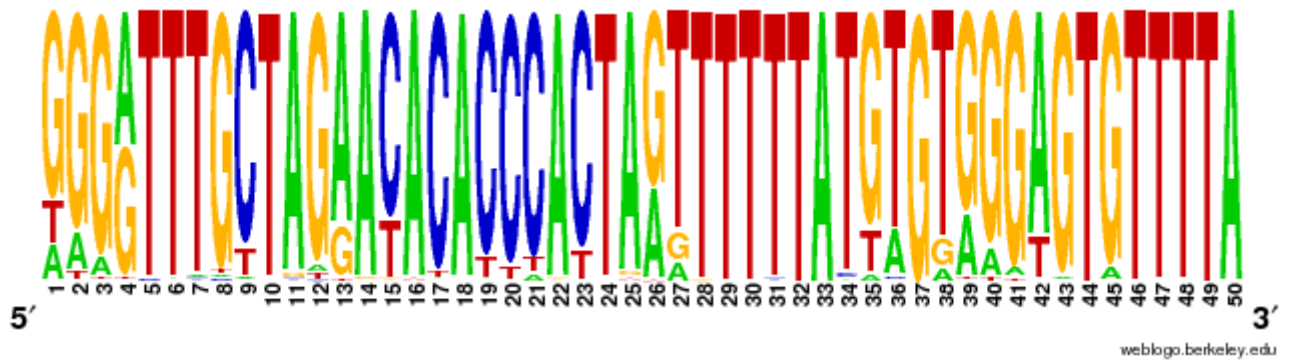
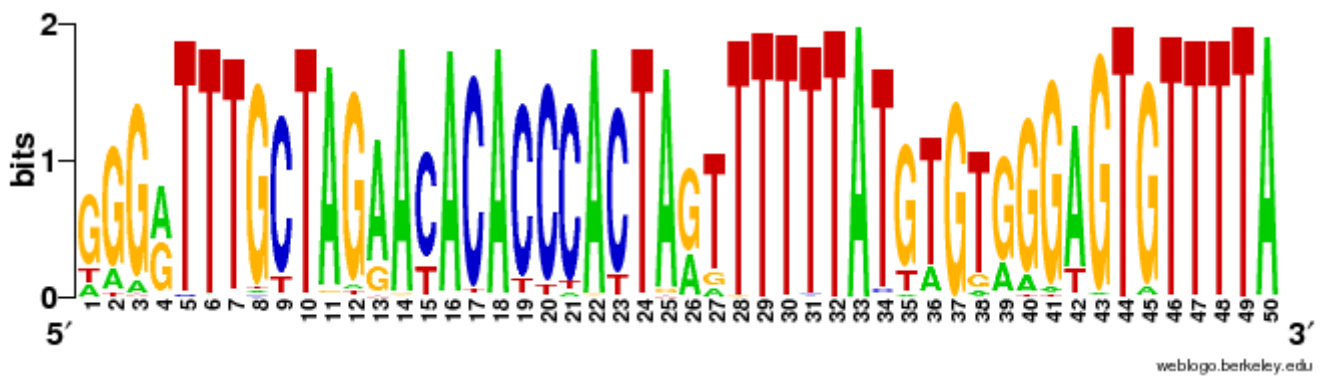
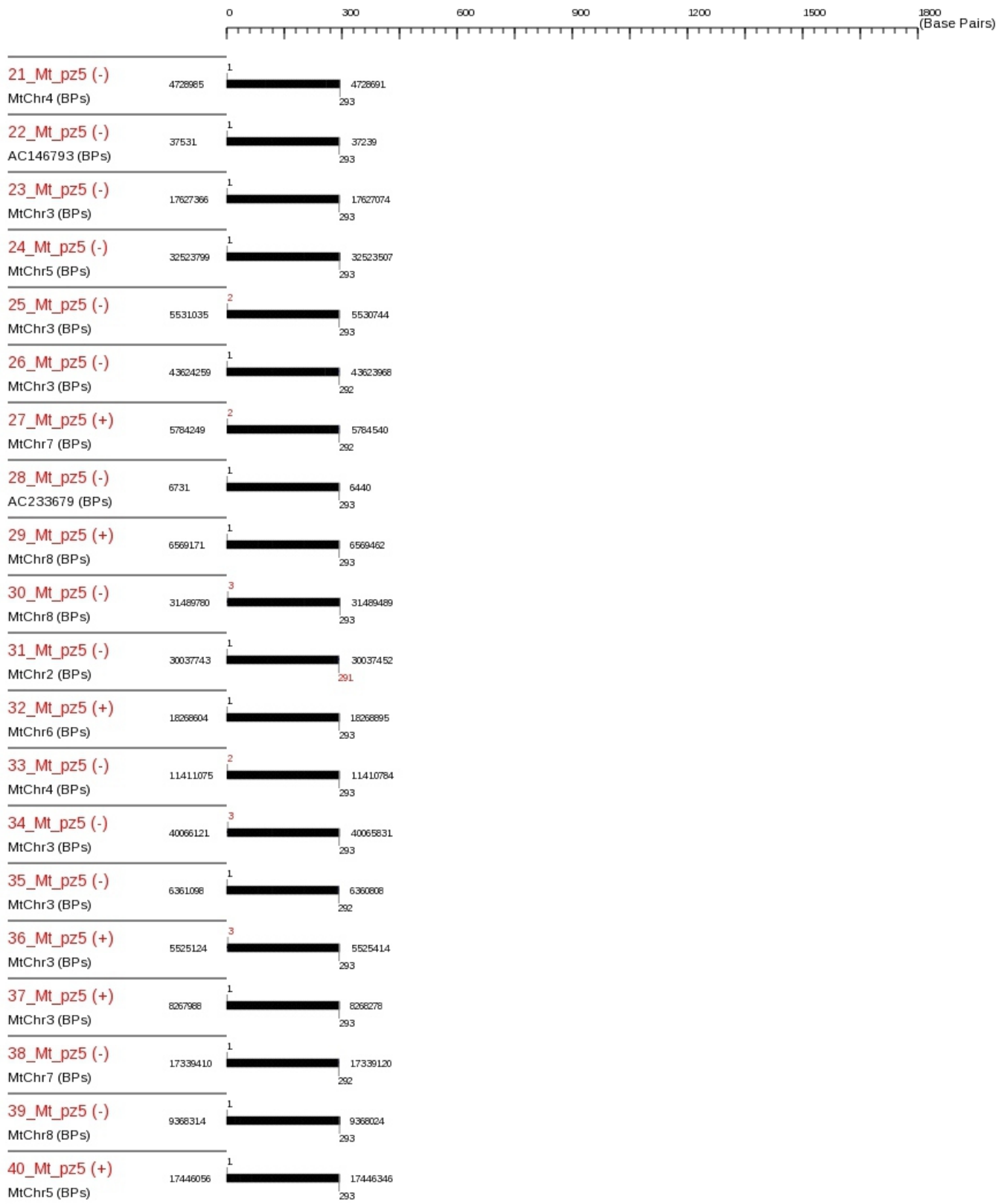


Supplementary figure 1. Sequence logos calculated for 50 bp long terminal parts of 198 *MuTAnTs* copies.

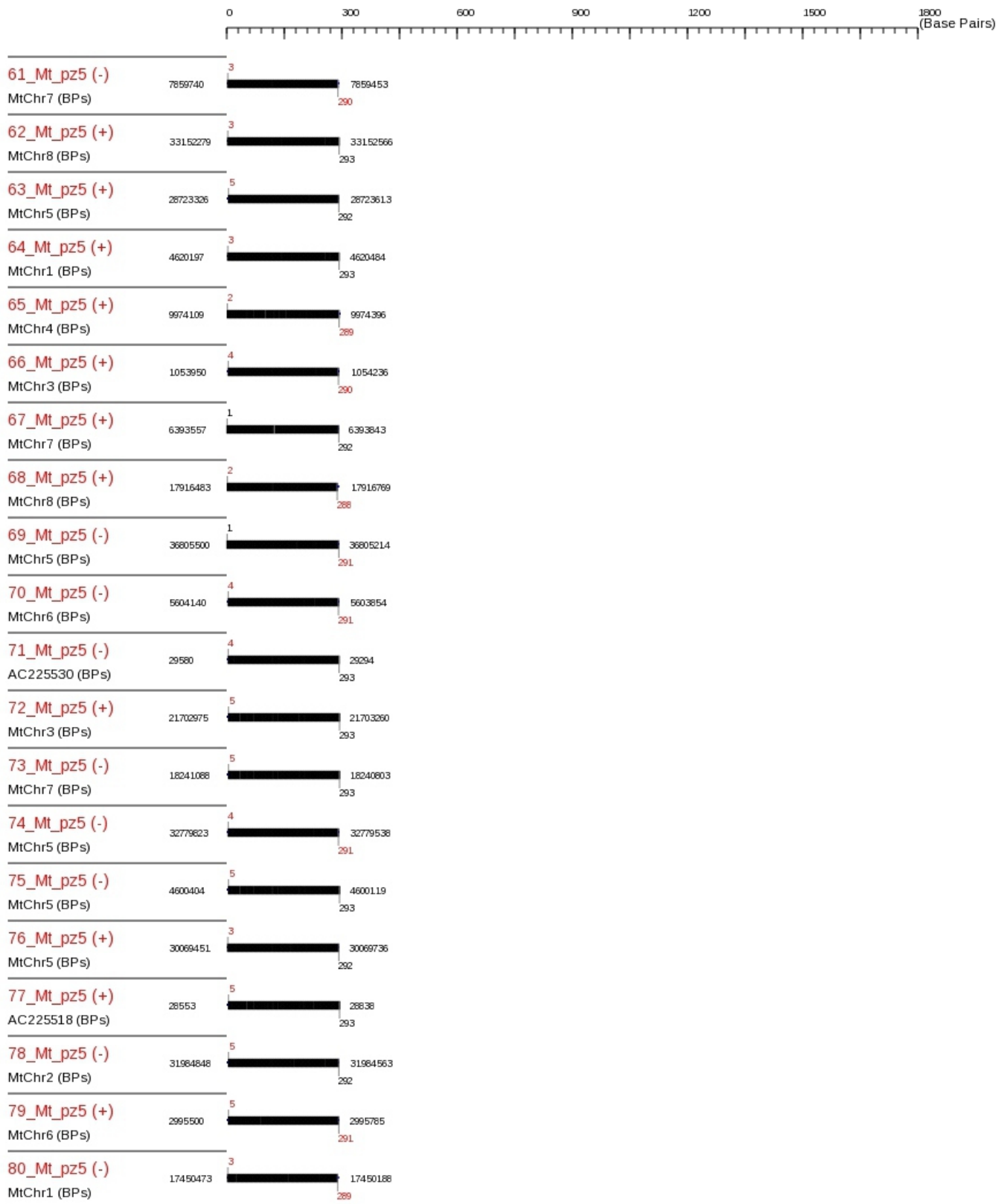


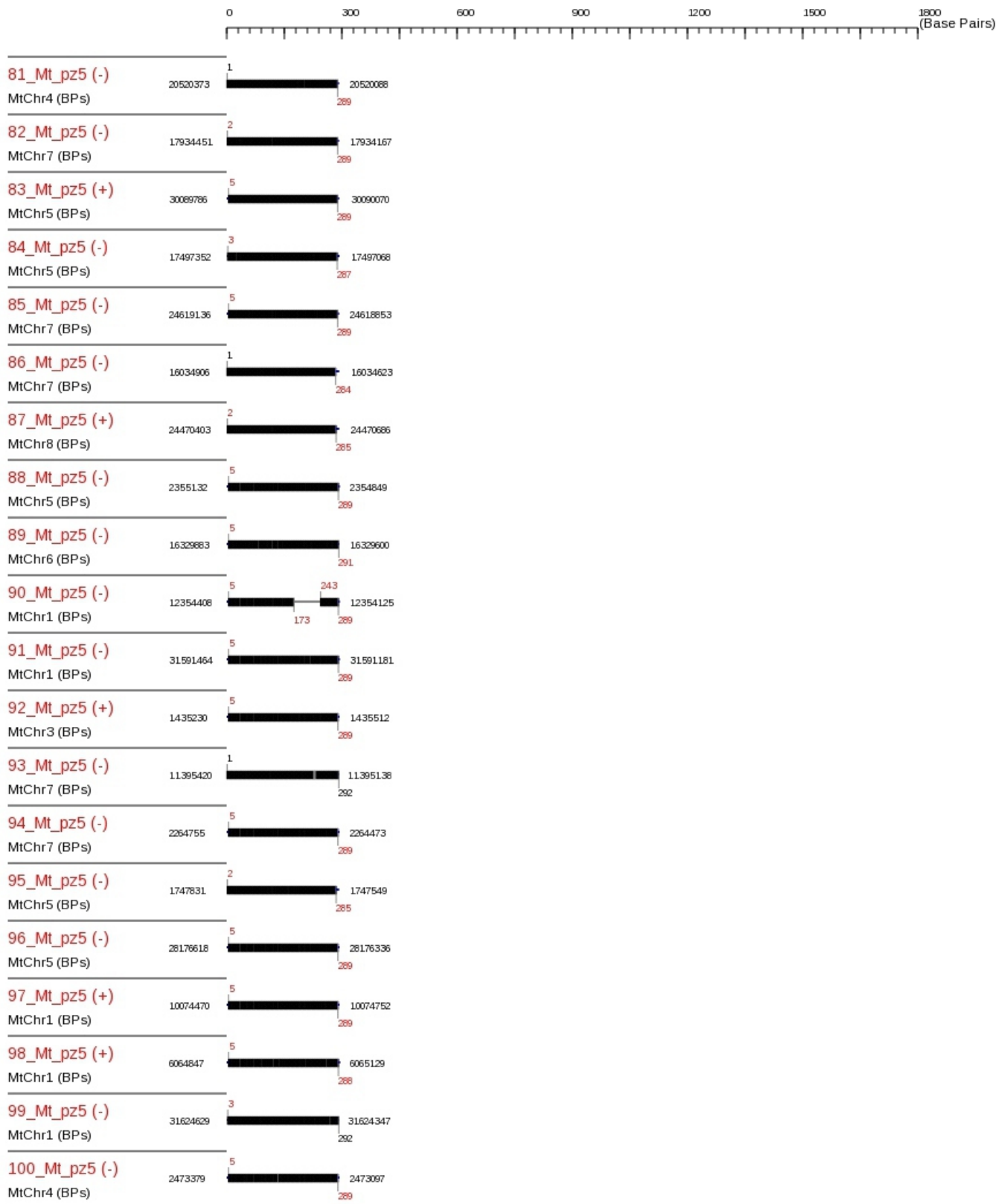
Supplementary figure 2. Graphical visualization of the blastn results of *MuTAnTs* family members obtained with TARGeT pipeline.













101_Mt_pz5 (+)	32440004	32440285	293
MtChr3 (BPs)			
102_Mt_pz5 (-)	26091112	26090631	289
MtChr8 (BPs)			
103_Mt_pz5 (+)	15504912	15505193	289
MtChr8 (BPs)			
104_Mt_pz5 (-)	17971975	17971694	289
MtChr8 (BPs)			
105_Mt_pz5 (-)	17303354	17303073	289
MtChr5 (BPs)			
106_Mt_pz5 (-)	24392667	24392386	289
MtChr5 (BPs)			
107_Mt_pz5 (-)	14250611	14250330	289
MtChr5 (BPs)			
108_Mt_pz5 (+)	21876815	21877096	289
MtChr2 (BPs)			
109_Mt_pz5 (-)	19897505	19897224	289
MtChr4 (BPs)			
110_Mt_pz5 (-)	8906446	8906165	289
MtChr4 (BPs)			
111_Mt_pz5 (+)	26225003	26225283	286
MtChr2 (BPs)			
112_Mt_pz5 (-)	24501360	24501080	289
MtChr2 (BPs)			
113_Mt_pz5 (+)	32734601	32734881	293
MtChr1 (BPs)			
114_Mt_pz5 (+)	10940424	10940704	289
MtChr1 (BPs)			
115_Mt_pz5 (+)	32657794	32658074	293
MtChr1 (BPs)			
116_Mt_pz5 (-)	12459810	12459530	287
MtChr4 (BPs)			
117_Mt_pz5 (+)	19476443	19476722	289
MtChr8 (BPs)			
118_Mt_pz5 (+)	7725831	7726110	289
MtChr6 (BPs)			
119_Mt_pz5 (+)	20566248	20566526	289
MtChr3 (BPs)			
120_Mt_pz5 (-)	36991854	36991576	289
MtChr5 (BPs)			

