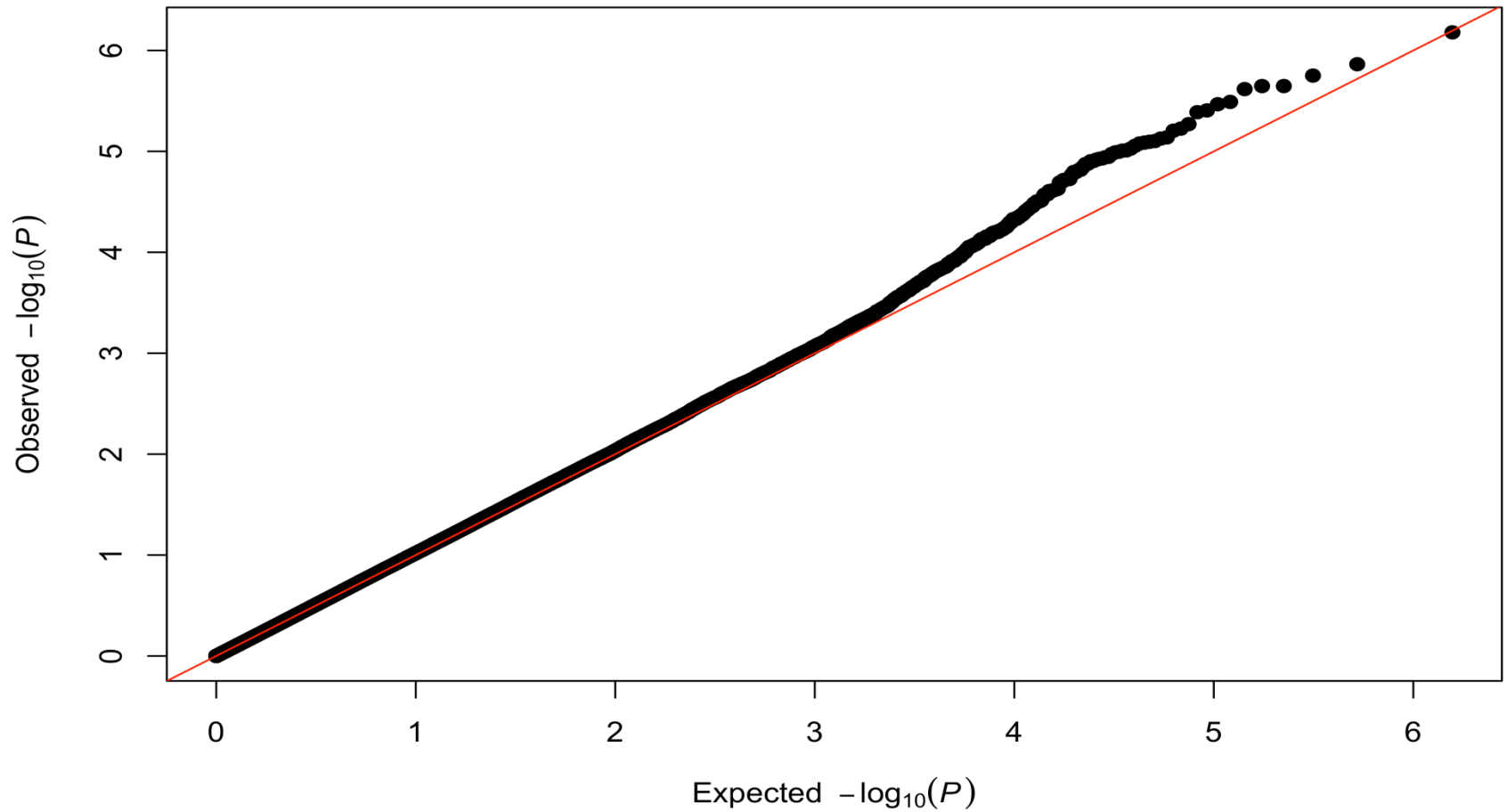
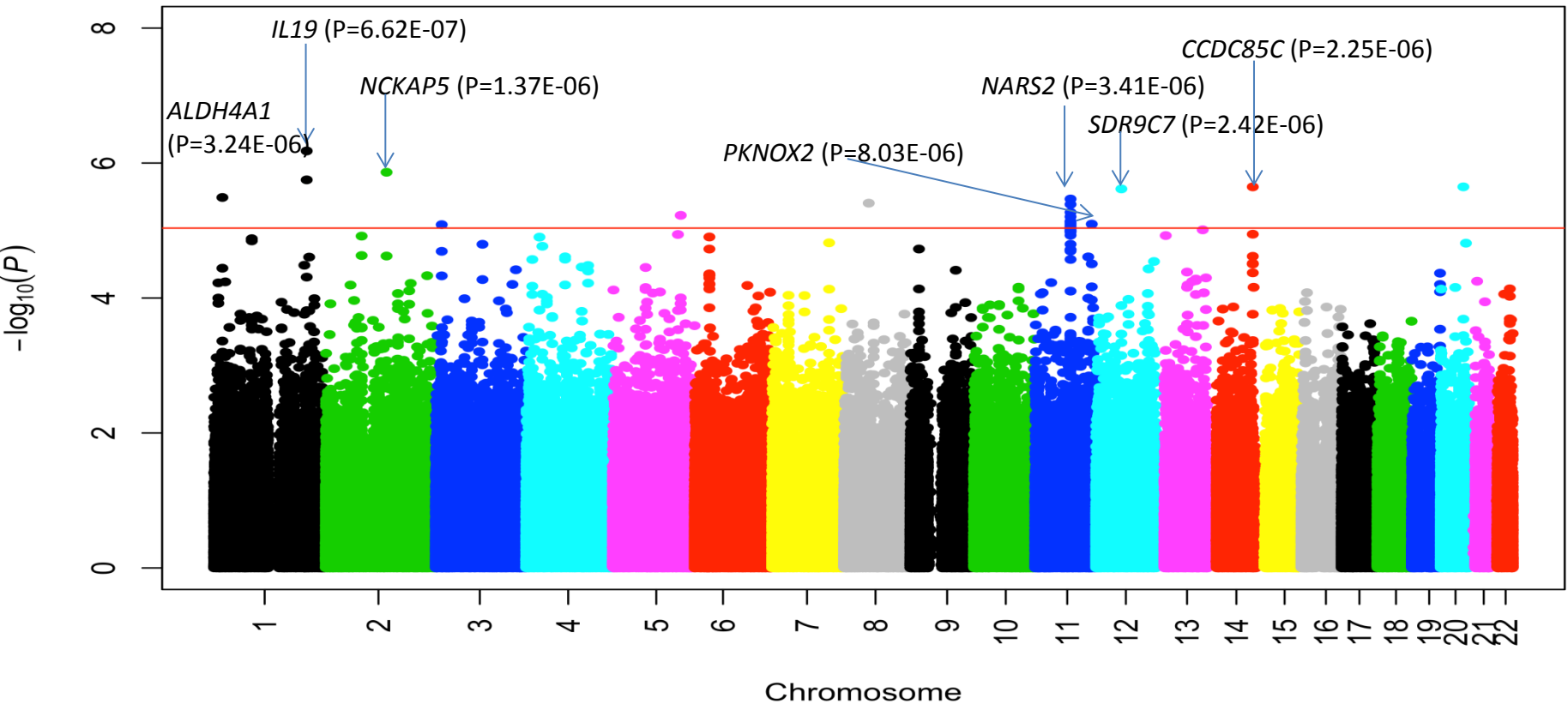


Supplementary Figure 1: QQ plot of GWAS for Survival in AD



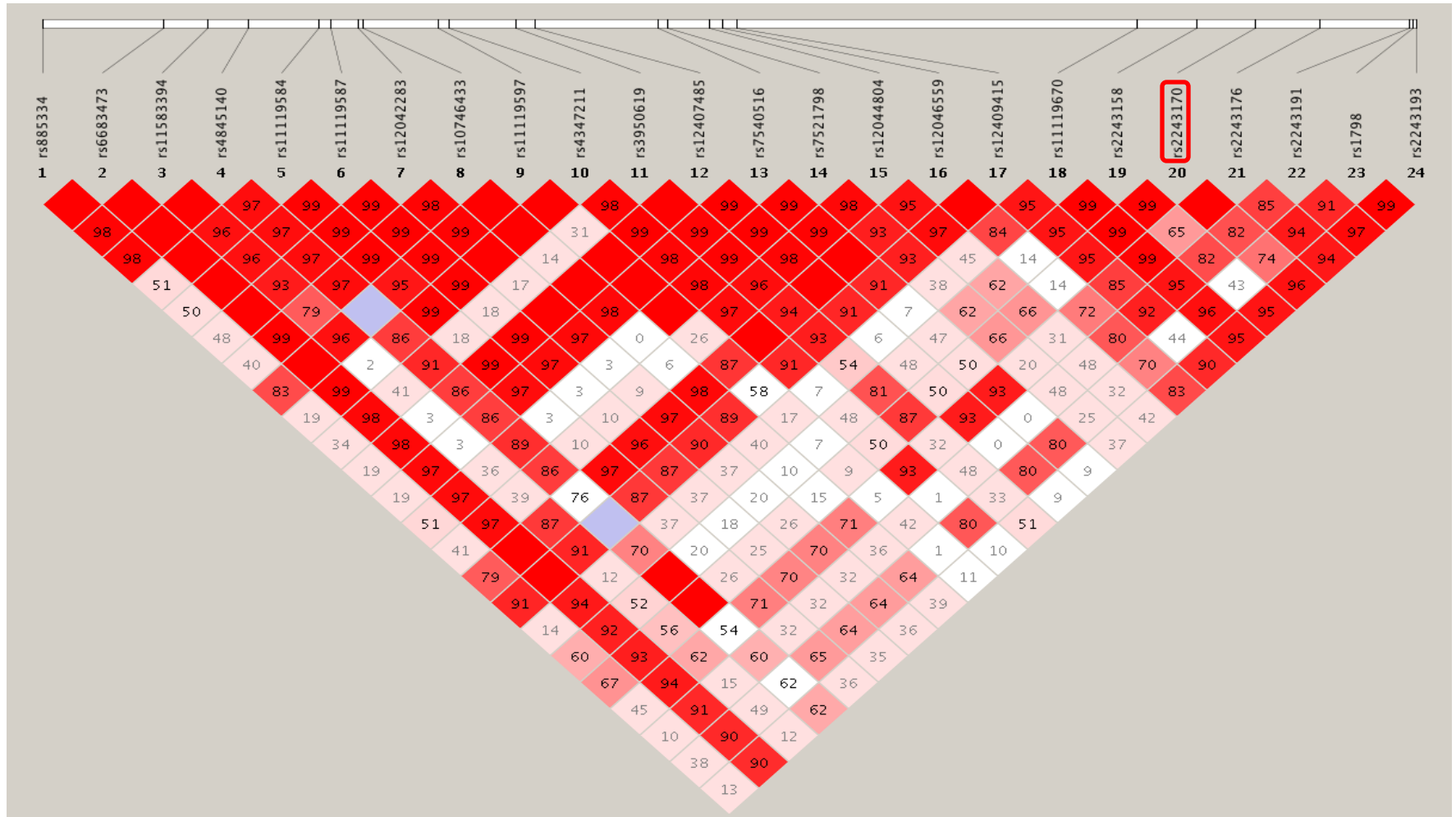
Supplementary Figure 2: Manhattan plot of GWA SNP analysis



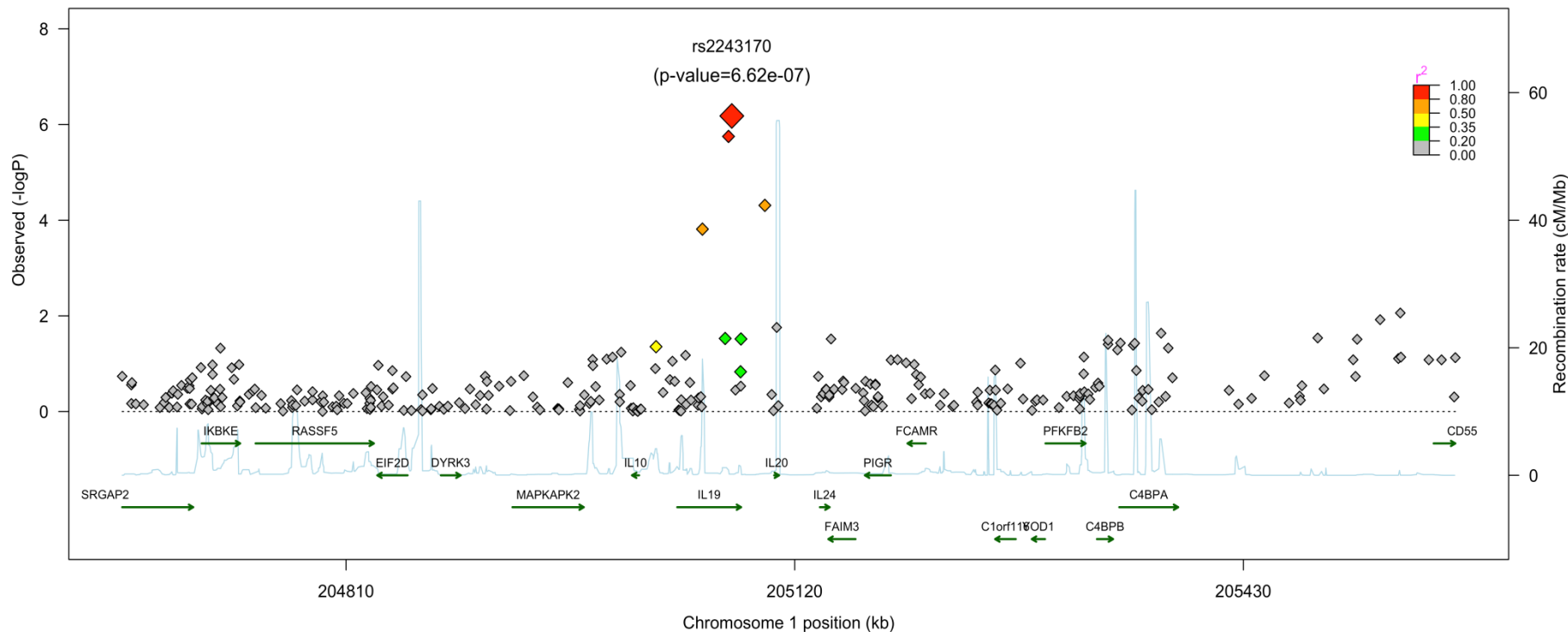
Note: The red line corresponds to the suggestive P-value threshold ($P < 1.00E-05$).

Supplementary Figure 3

Linkage disequilibrium structure of *IL19* gene. The top SNP is circled in red.

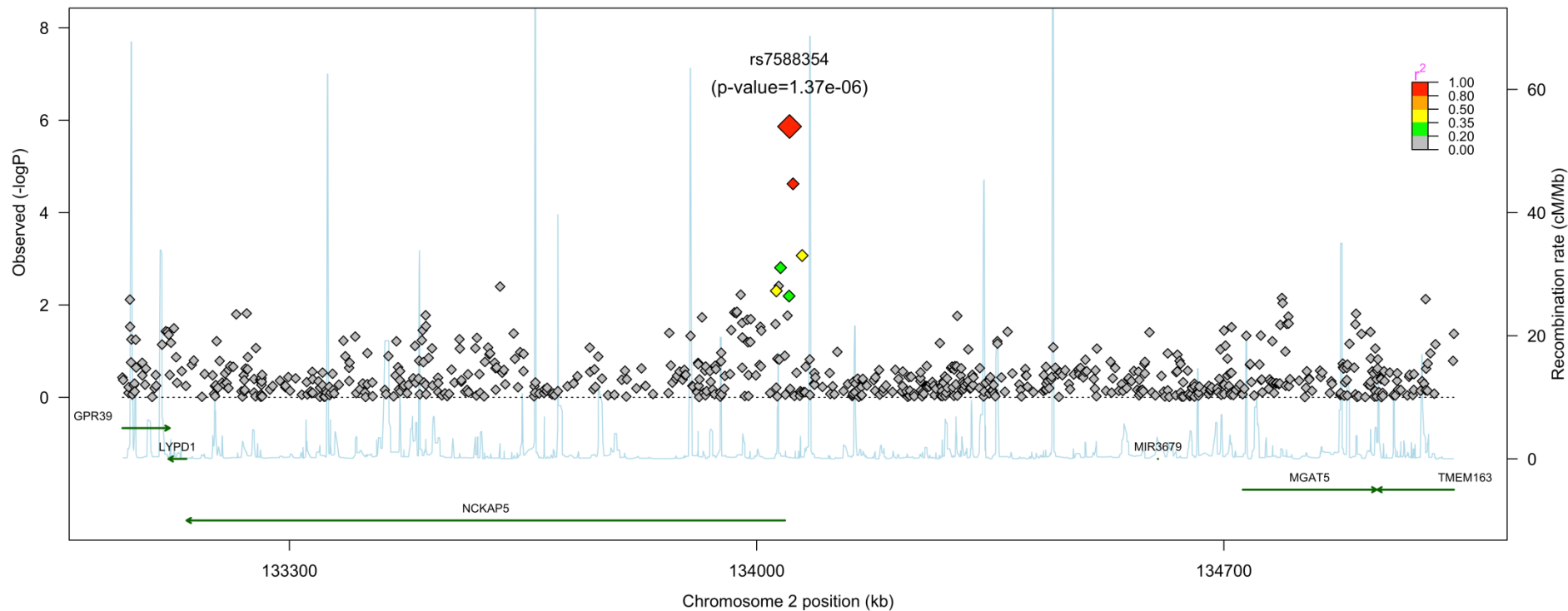


Supplementary Figure 4: Regional plot for *IL19* (rs2243170)

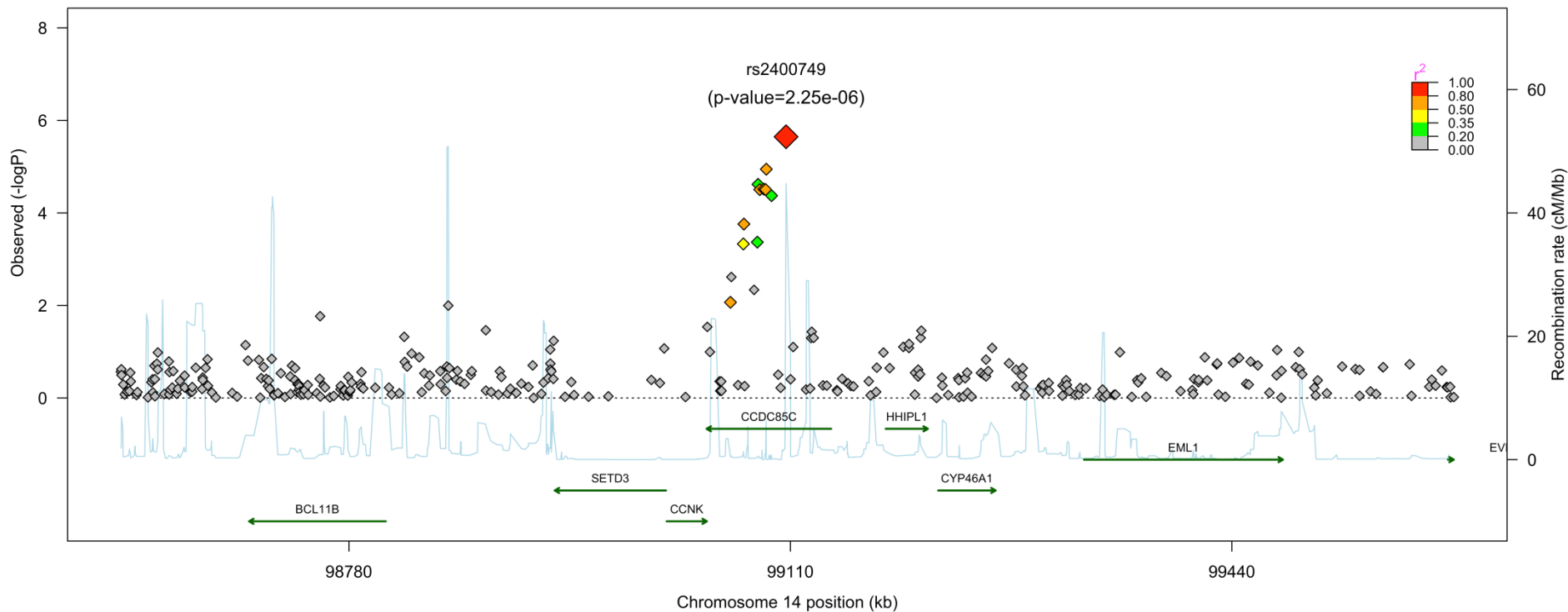


Note: r^2 is a measure of LD between the top SNP and other SNPs. Red indicates a high LD, and gray indicates low LD. The blue curve in the plots shows the recombination rates. This is the same for Supplementary Figure 4 to 11.

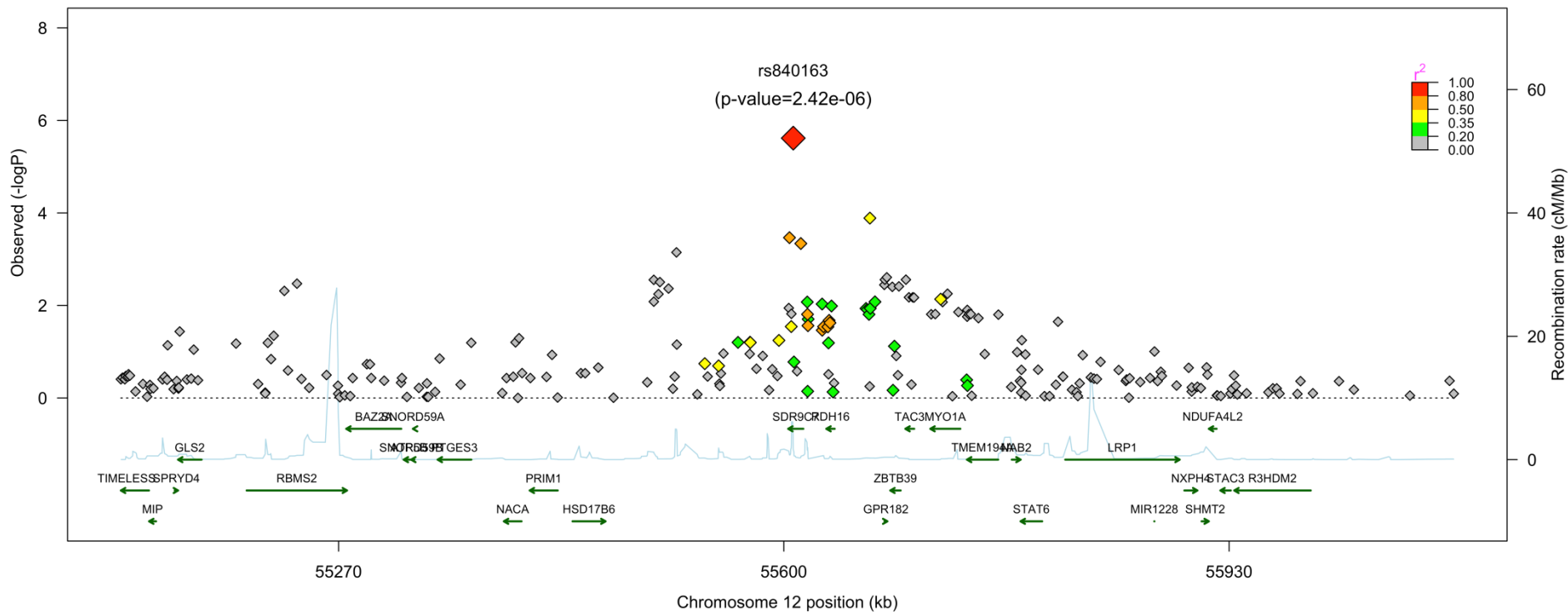
Supplementary Figure 5: Regional plot for *NCKAP5* (rs7588354)



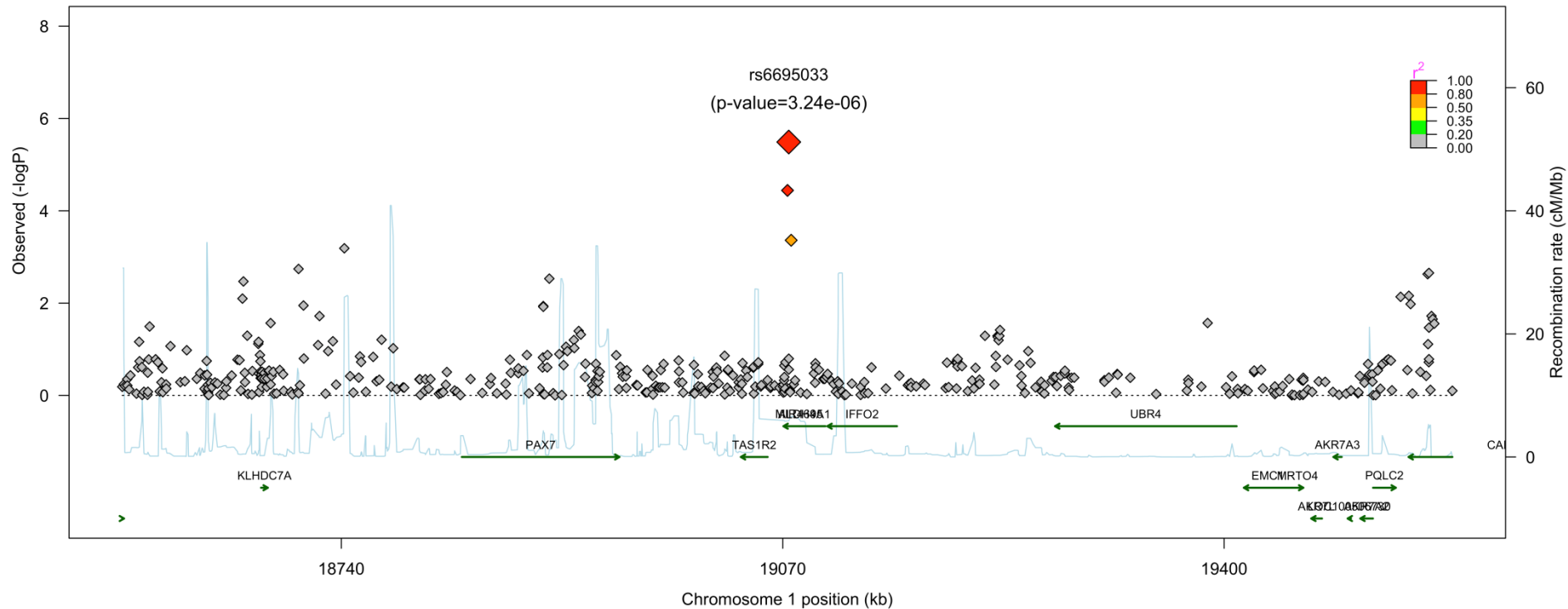
Supplementary Figure 6: Regional plots for the *CCDC85C*(rs2400749) gene



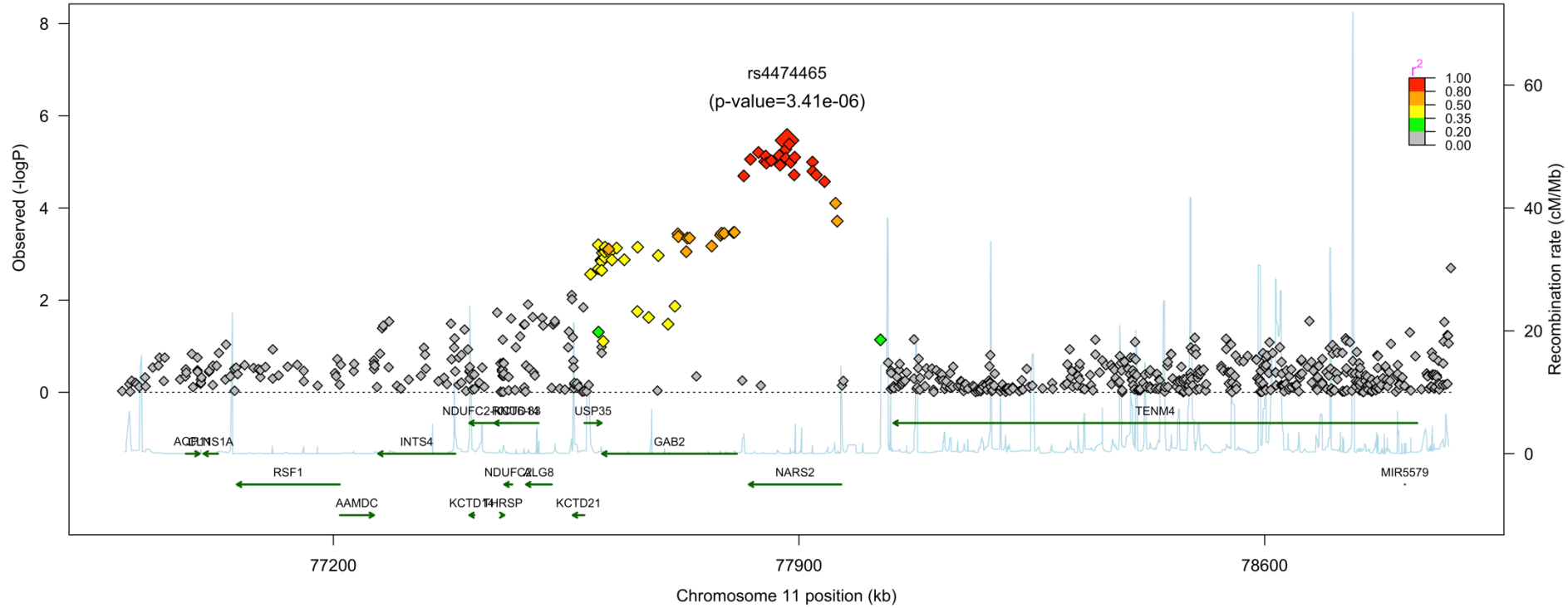
Supplementary Figure 7: Regional plot for *SDR9C7* (rs840163)



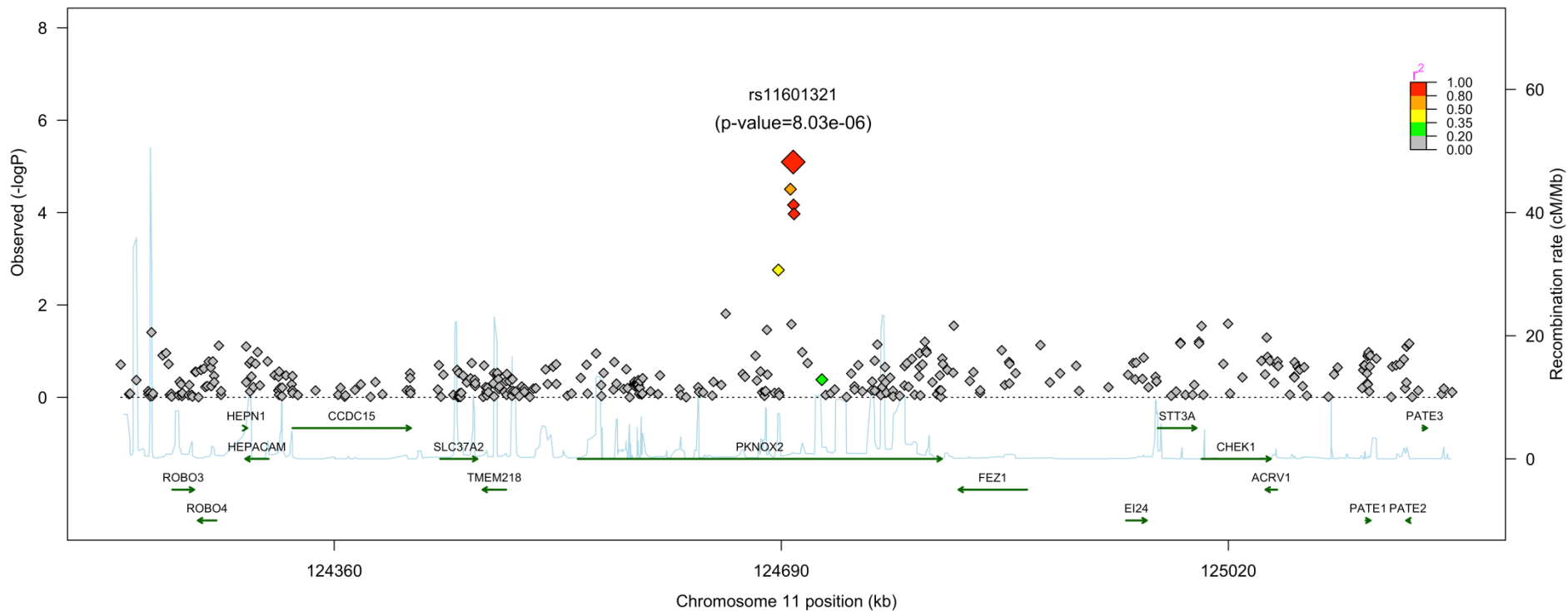
Supplementary Figure 8: Regional plot for *ALDH4A1* (rs6695033)



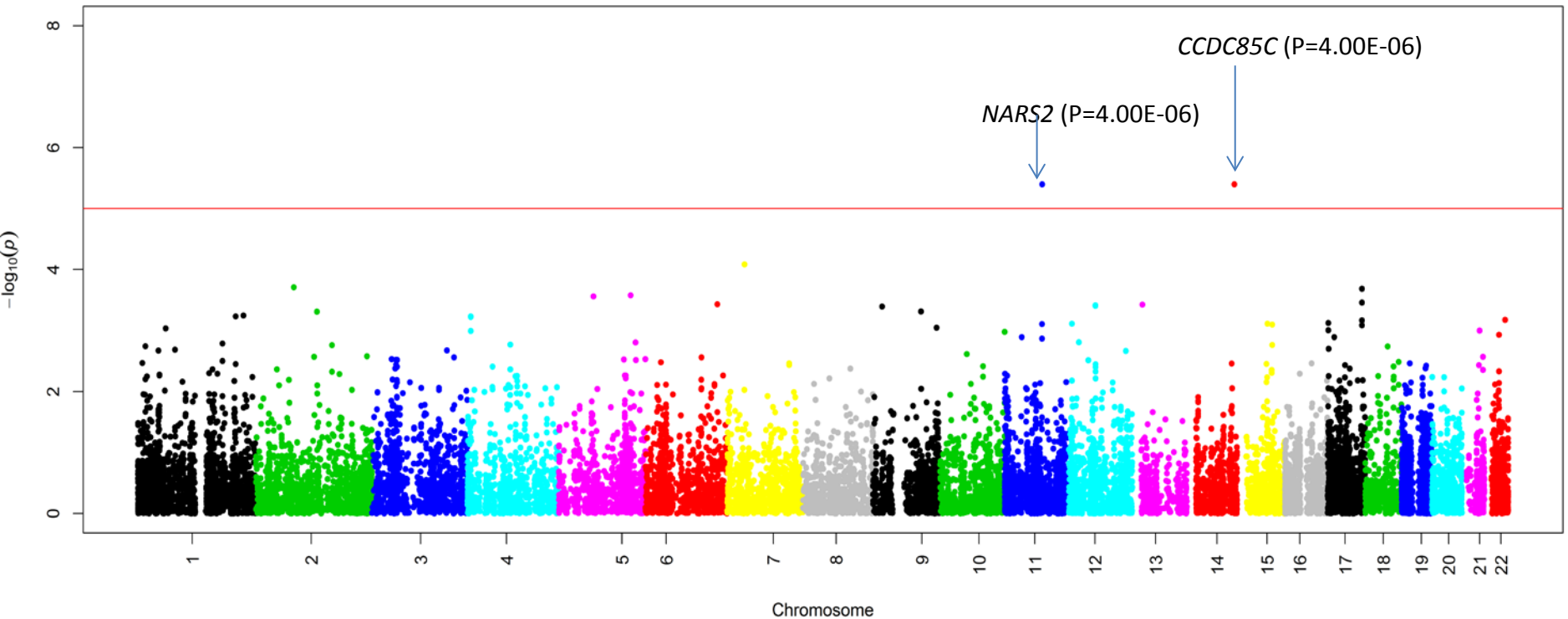
Supplementary Figure 9: Regional plot for *NARS2* (rs4474465)



Supplementary Figure 10: Regional plot for *PKNOX2* (rs11601321)



Supplementary Figure 11: Manhattan plot of Genome-Wide Gene-based Analysis



Note: The red line corresponds to the suggestive P-value threshold ($P < 1.00E-05$).

