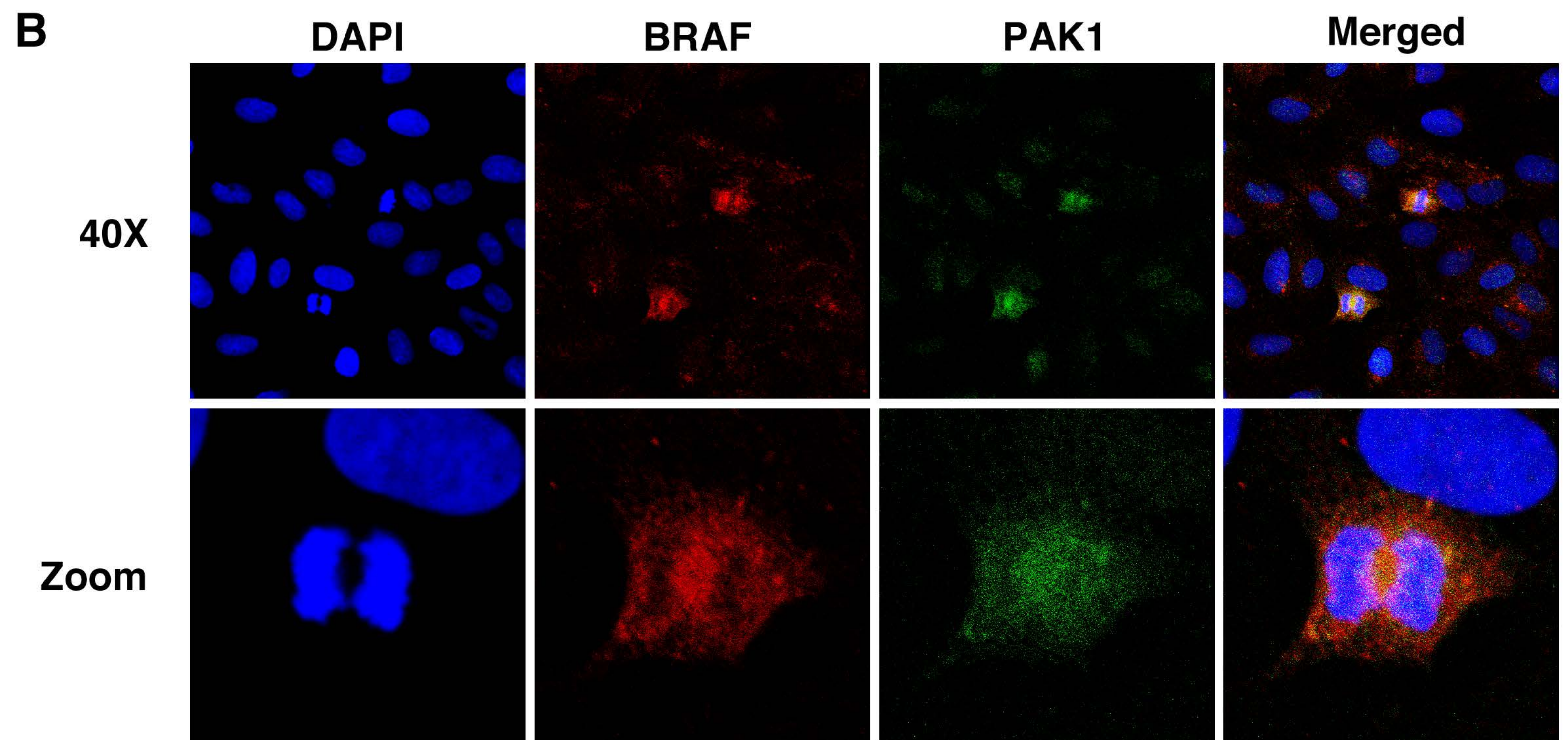
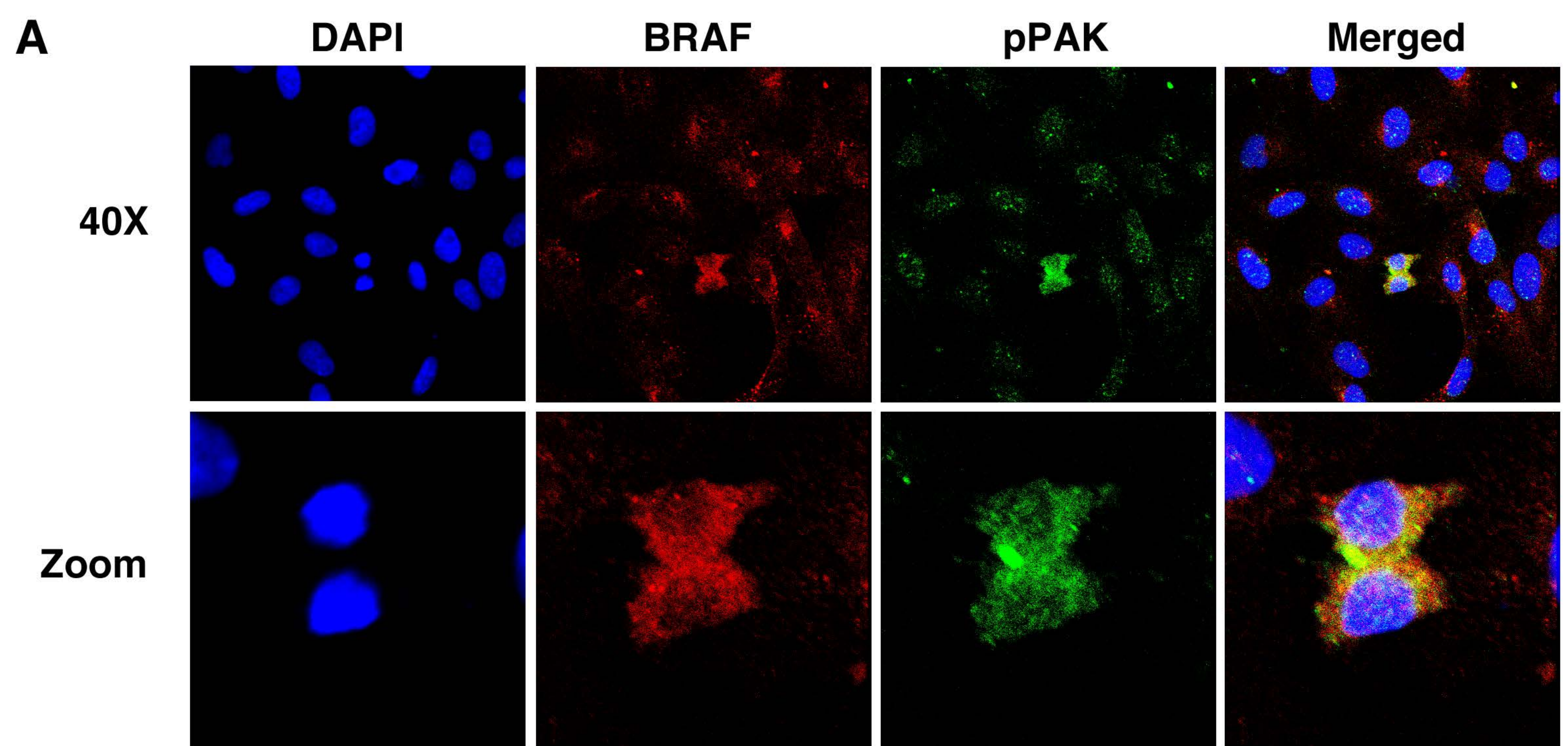


Supplemental Data Figure Legends

SUPPLEMENT FIGURE 1. Unsynchronized TPC1 cells, were stained with DAPI (nuclear), Alexa-488 (PAK1& Thr423 pPAK) and Alexa-594 (BRAF) and subjected to immunofluorescence with confocal microscopy. Images were taken at low (40X) and high power (Zoom). Co-localization was primarily identified in mitotic cells.

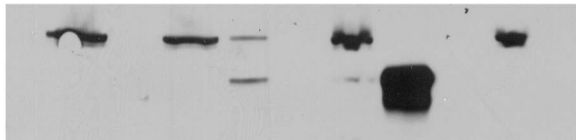
SUPPLEMENT FIGURE 2. Protein was isolated from TPC1 cells in continuous growth cell culture conditions and IP was performed using BRAF and PAK1 antibodies, and IgG as a control for non-specific binding. Immunoblot of the BRAF-precipitated protein did not contained PAK1 and the PAK1-precipitated protein did not contain BRAF. Unbound is IB of the protein in the supernatant prior to washing and Bound is the immunoprecipitated protein. Control is IB of the total protein lysate for size of the protein. Data shown are representative of experiments performed on at least three separate occasions.



IB: BRAF



IB: PAK1



Unbound

Bound

IP: BRAF

Unbound

Bound

IP: PAK1

Unbound

Bound

IP: IgG

Input