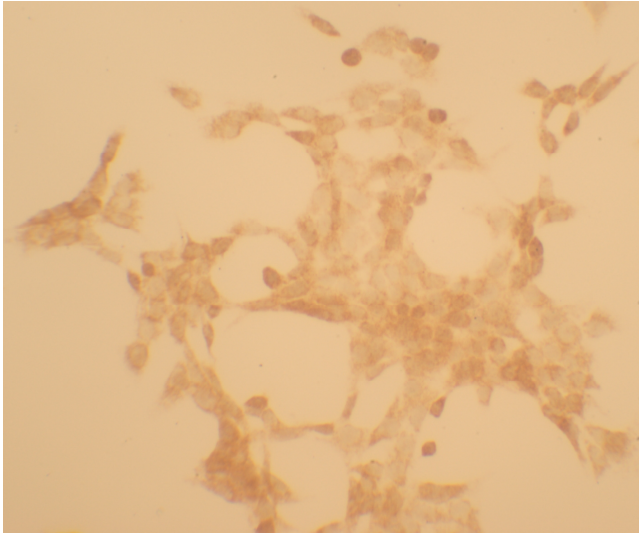


Supplement Figure Legends

Supplementary Figure 1: Purity identification of HSC-T6 cells. HSC-T6 cells were seeded at a density of 1×10^4 cells/well in 6-well plates. After incubation for 24 h at 37 °C, α -SMA in cells were examined by immunohistochemical method. All the cells showed positive staining.

Supplementary Figure 2: Toxicity assay of WM130 in WRL-68 cells. normal liver cells WRL-68 were seeded at a density of 5×10^3 cells/well in 96-well plates. Different compounds were added in culture at equal concentrations (0.1 mg/ml). After incubation for 24 h, MTT assay were observed. The IC_{50} of WM130 was 116.4 μ M.

Supplementary Figure 1



Supplementary Figure 2

