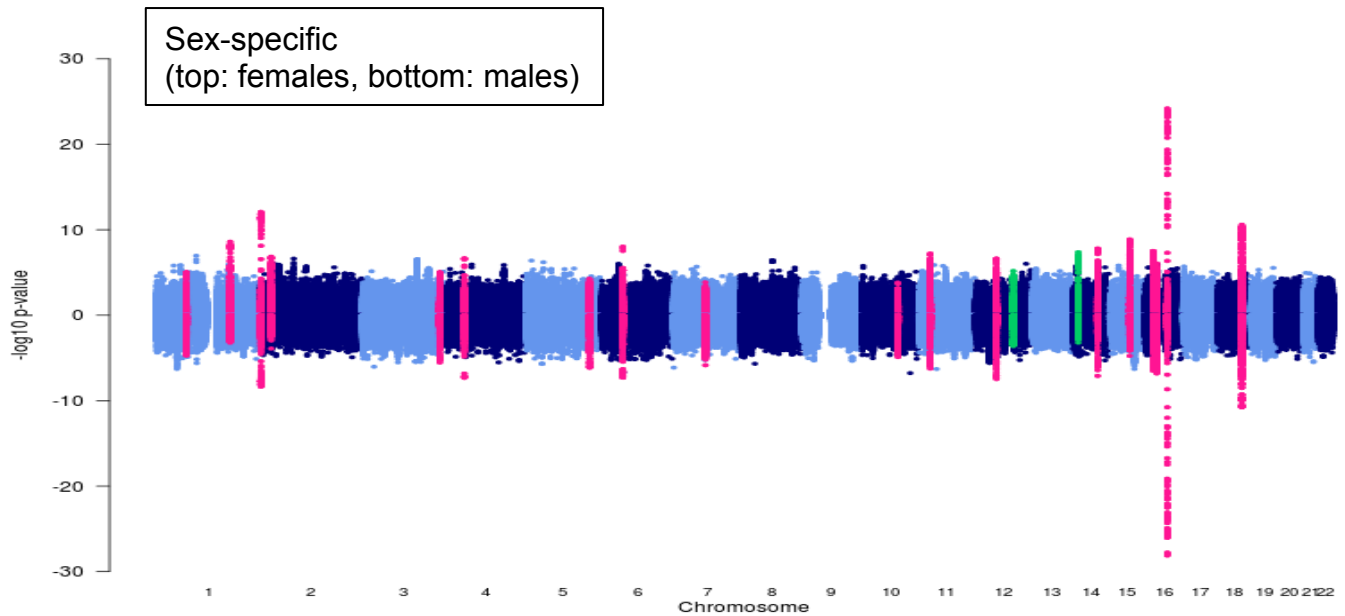
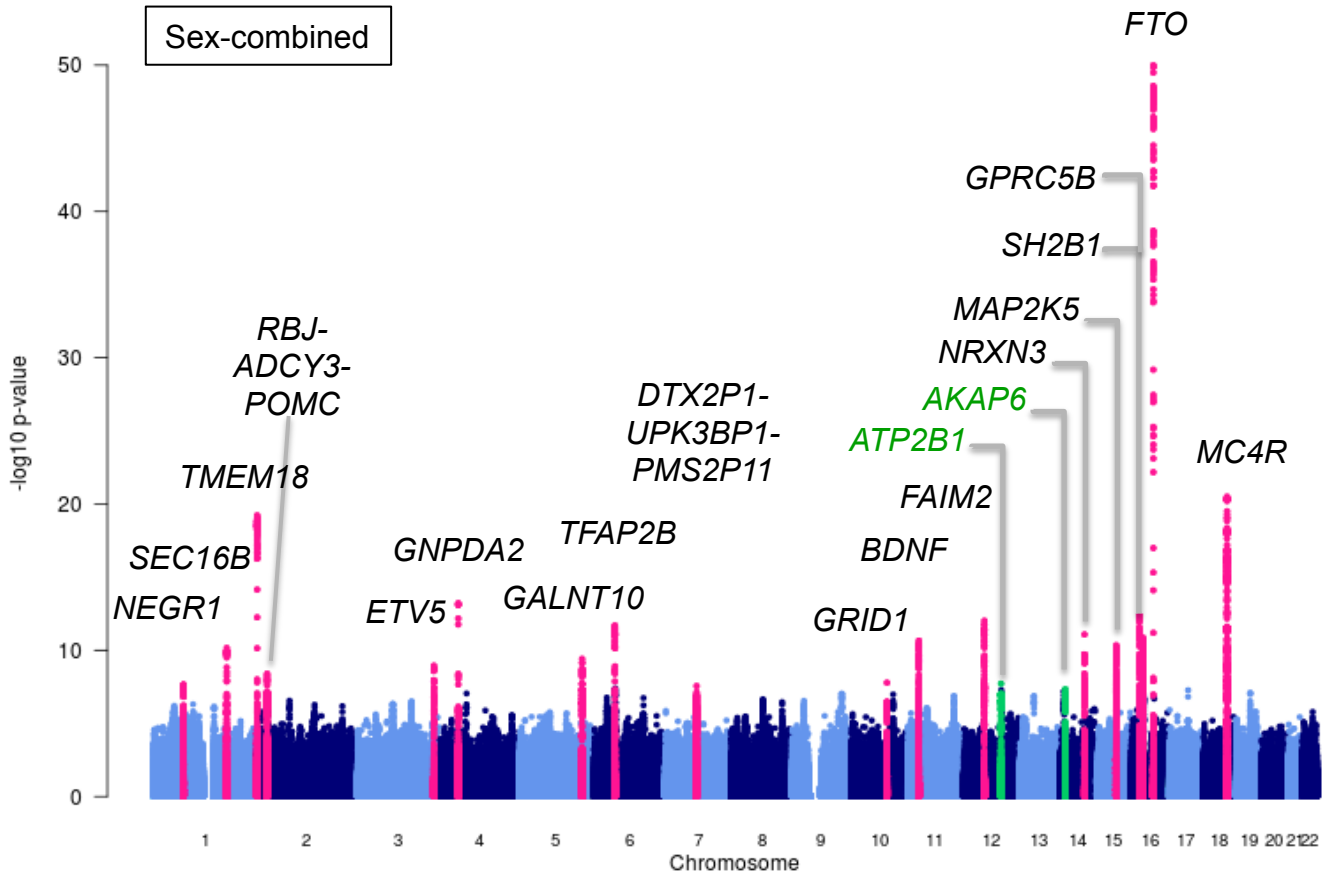


A BMI (N = 87,048)



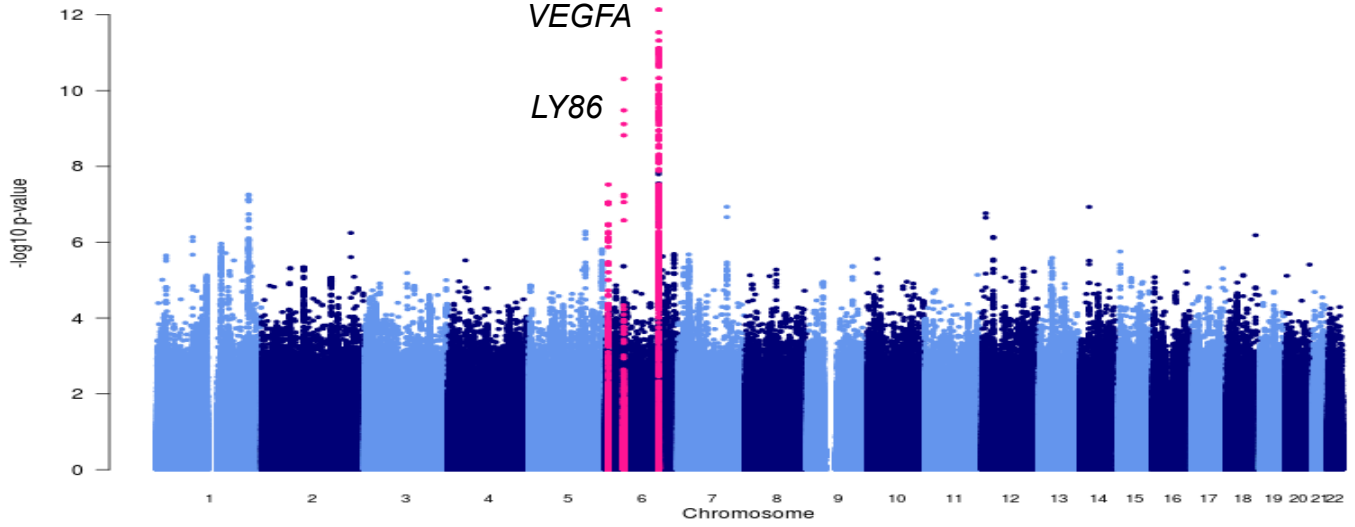
B WHR_{adjBMI} (N = 54,572)

Sex-combined

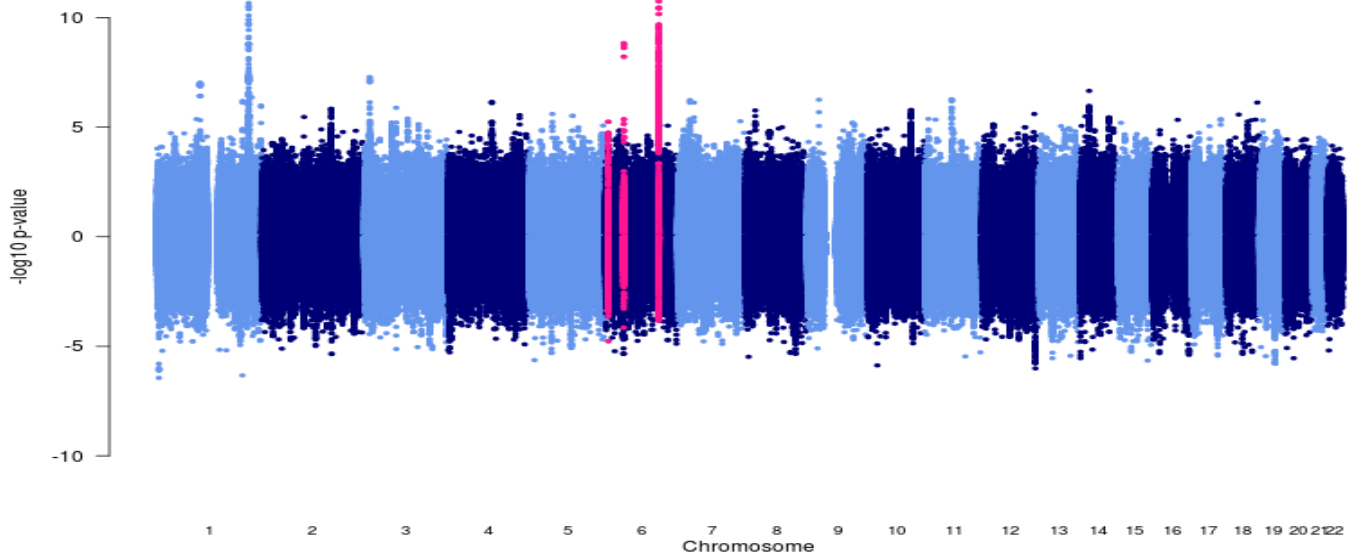
RSPO3

VEGFA

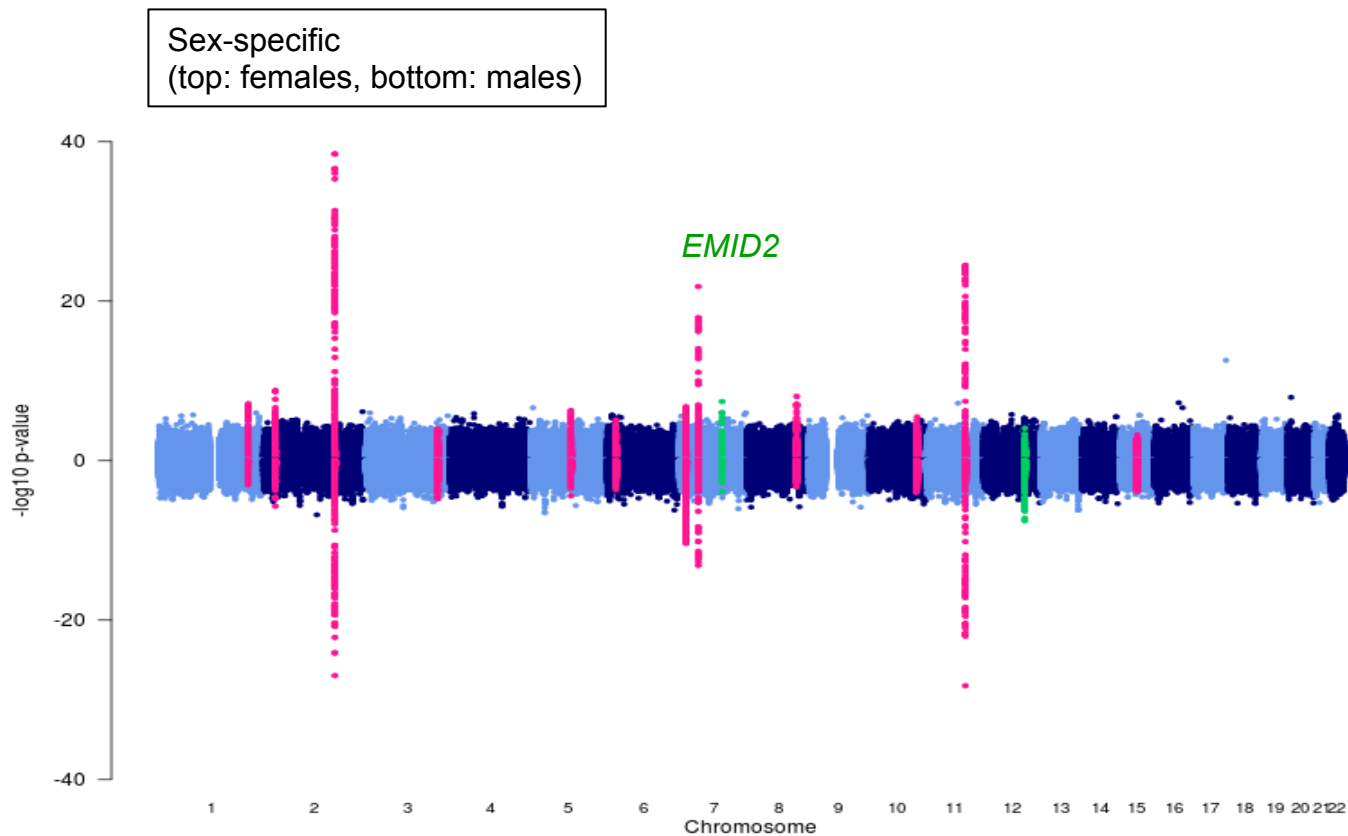
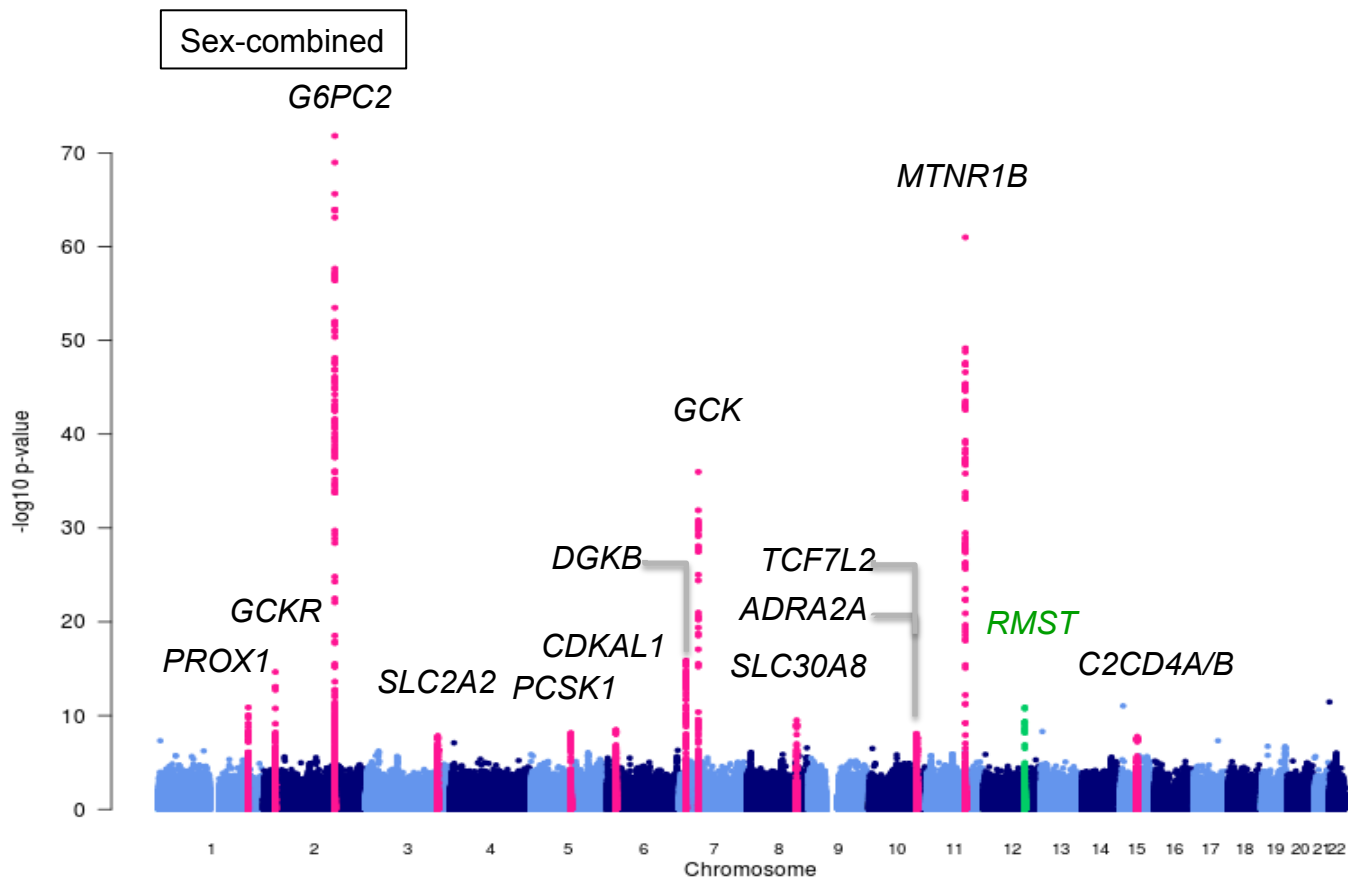
LY86



Sex-specific
(top: females, bottom: males)



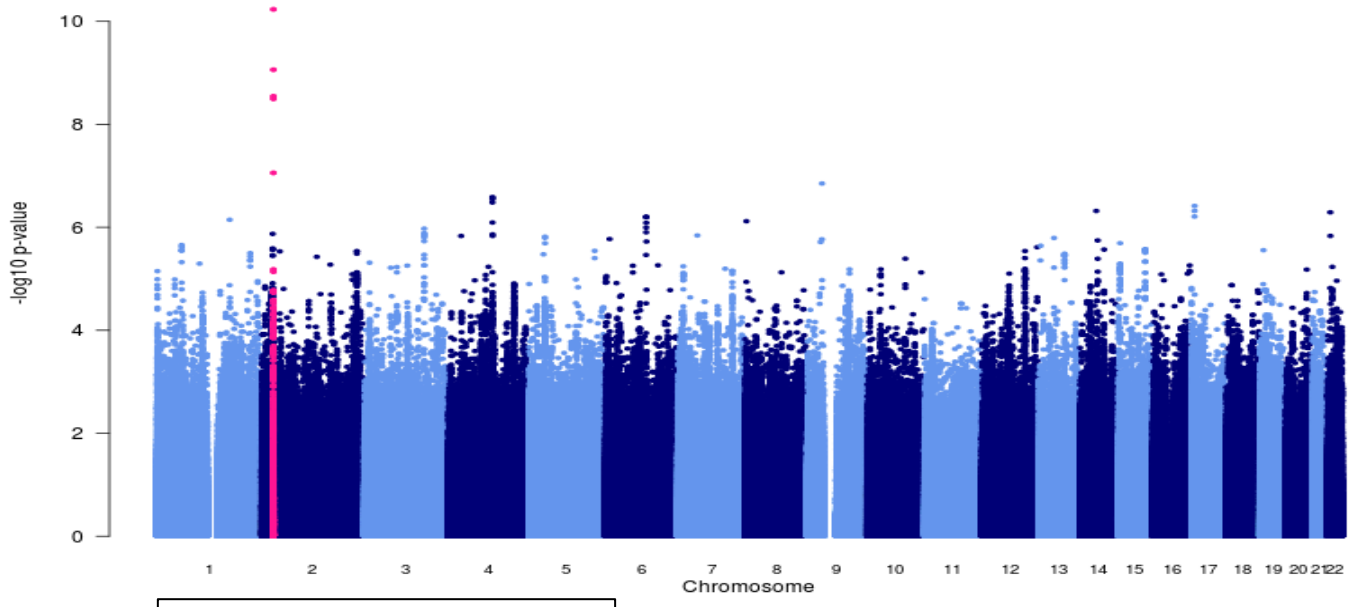
C FG (N = 46,694)



D Fl_{adjBMI} (N = 24,245)

Sex-combined

GCKR



Sex-specific
(top: females, bottom: males)

