

Supplementary Information

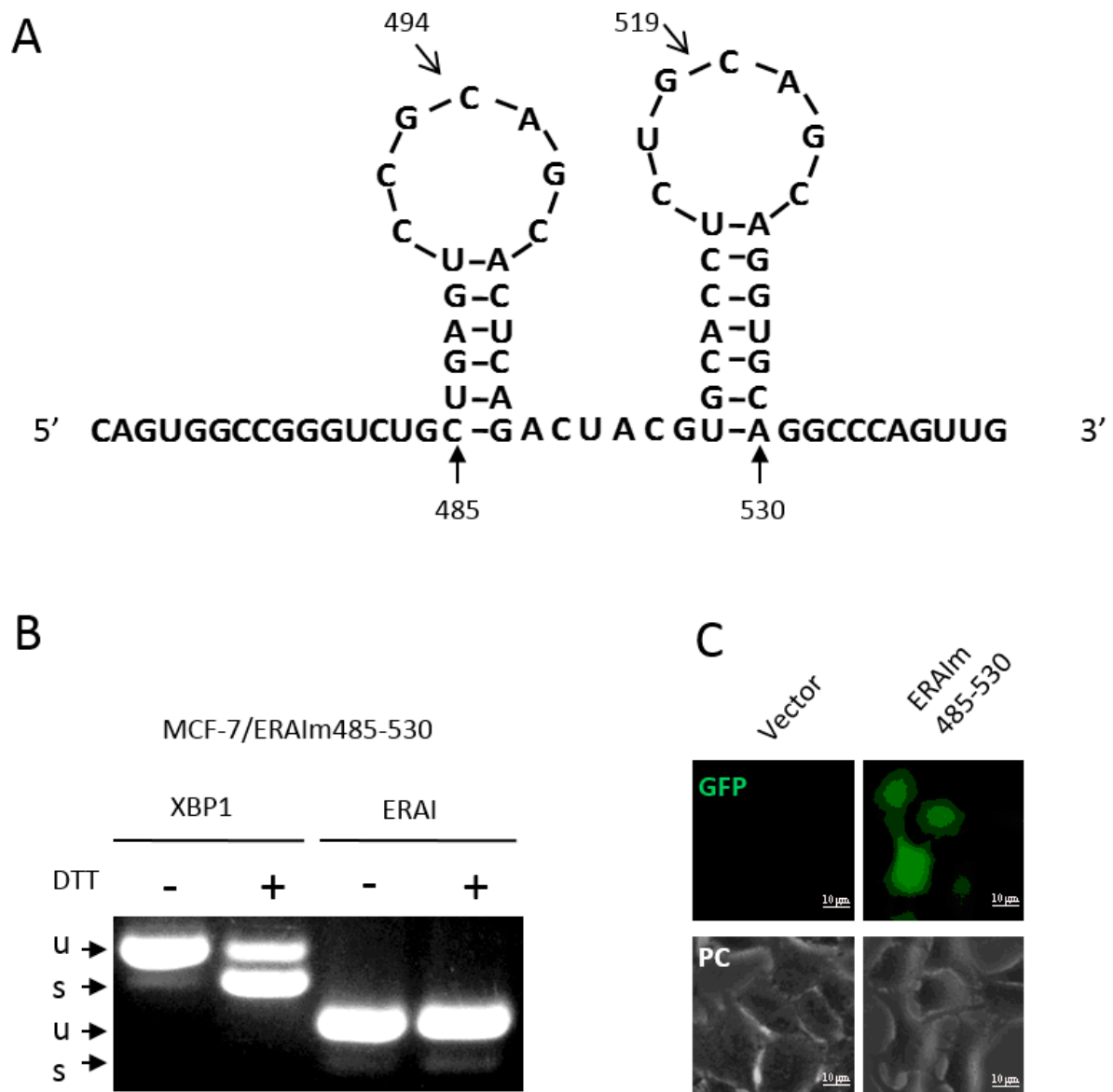


Figure S1. Expression of ERAIm485–530 in MCF-7. (A) The sequence of ERAIm485–530; (B) The total RNA of MCF-7/ERAIm485–530 cells was subjected to RT-PCT with XBP1 or ERAI primers and the PCR products were run in the agarose gel under the same condition; and (C) The fluorescence of MCF-7 cells expressing vector and ERAIm485–530.

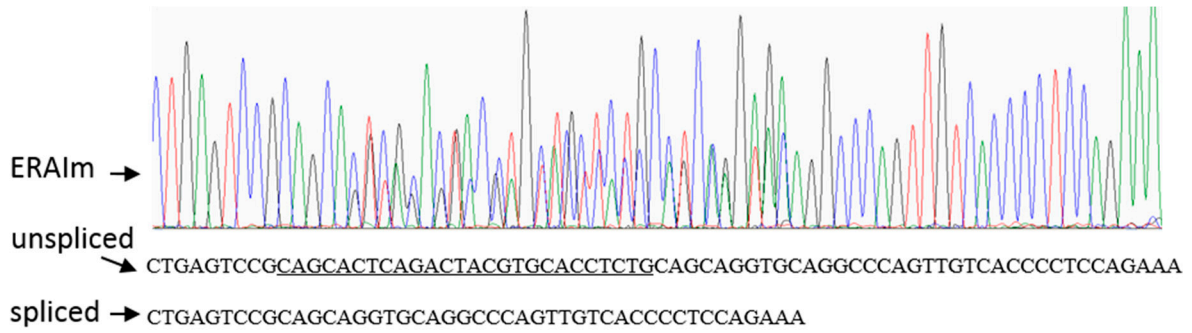


Figure S2. The sequence of unspliced ERAIm and spliced ERAIm. (The black line representative the cut off sequence).

Expression in MCF-7

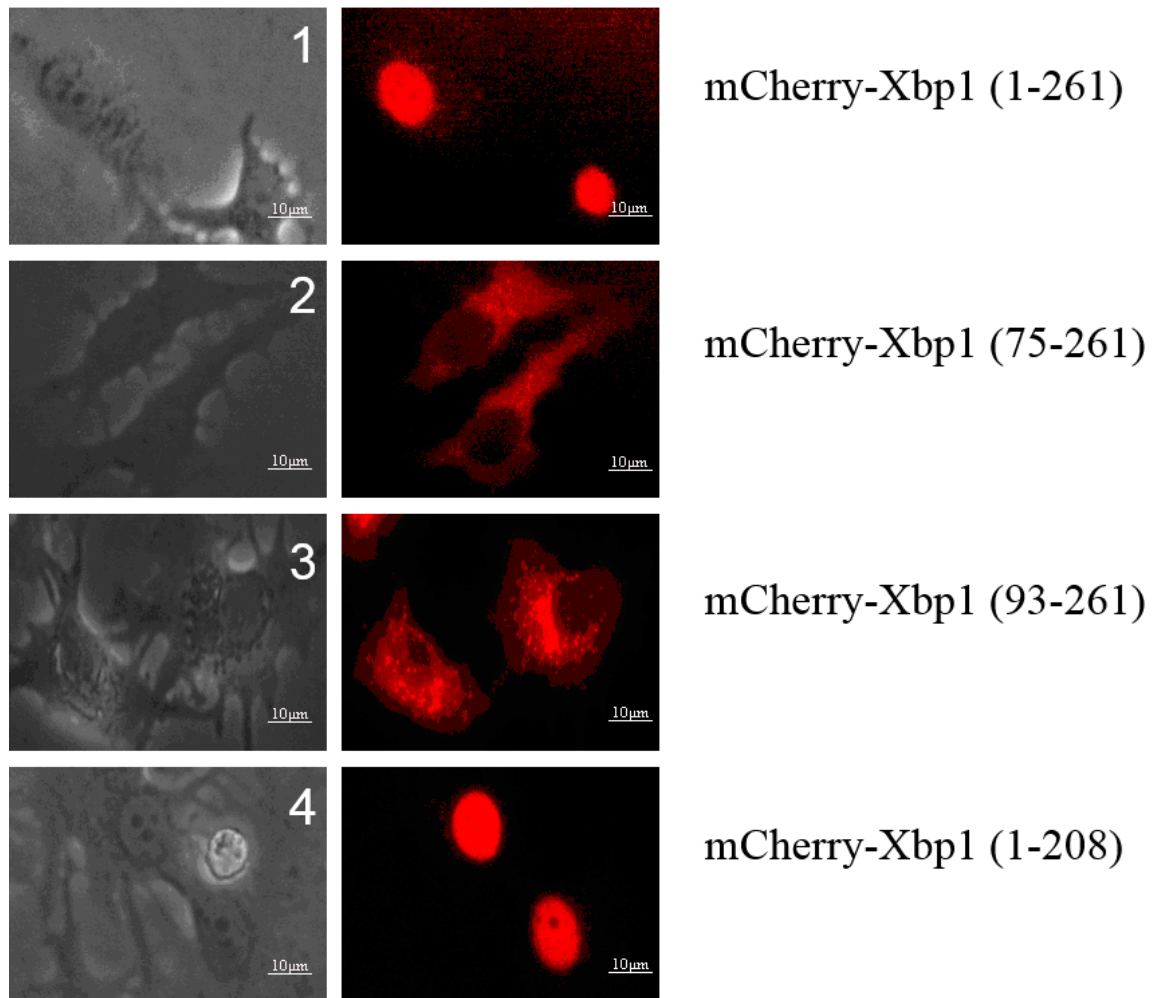


Figure S3. Expression of these mCherry-tagged XBP1 fragments in MCF-7 cells. (1) Expression of mCherry-Xbp1(1-261) in MCF-7; (2) Expression of mCherry-Xbp1 (75-261) in MCF-7; (3) Expression of mCherry-Xbp1(93-261) in MCF-7; and (4) Expression of mCherry-Xbp1(1-208) in MCF-7