

Figure S1: Positions of ribosomal genes on *L. ferrodiazotrophum* and *G-plasma*. They locate on the same contig in *L. ferrodiazotrophum*, while in *G-plasma* they are on four different contigs.

Figure S2: Phylogenetic tree of *RplX* gene family.

Figure S3: Phylogenetic tree of *RplE* gene family.

Figure S4: Phylogenetic tree of *RplR* gene family.

Figure S5: Phylogenetic tree of *RpsJ* gene family.

Figure S6: Phylogenetic tree of *RplD* gene family.

Figure S7: Phylogenetic tree of *RpsC* gene family.

Figure S8: Phylogenetic tree of *RplP* gene family.

Figure S1: Positions of ribosomal proteins on *L. ferrodiazotrophum* and *G-plasma*.

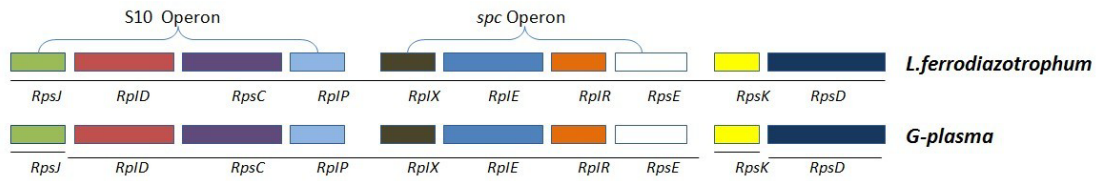


Figure S2: Phylogenetic tree of *RplX* gene family.

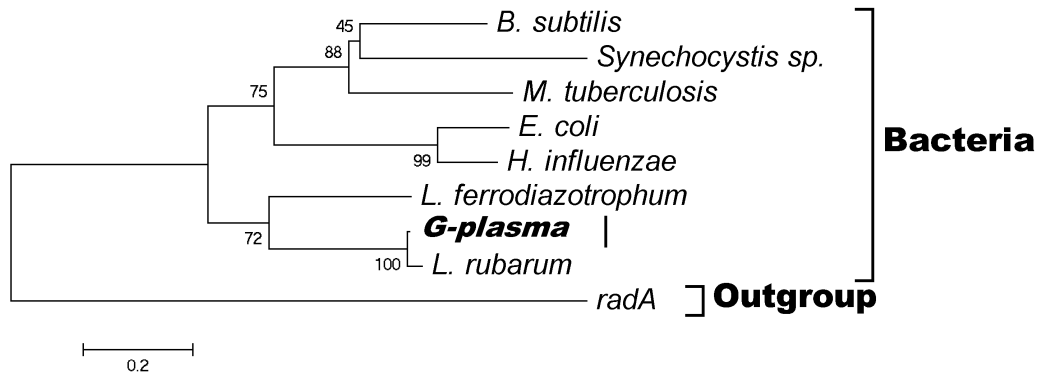


Figure S3: Phylogenetic tree of *RplE* gene family.

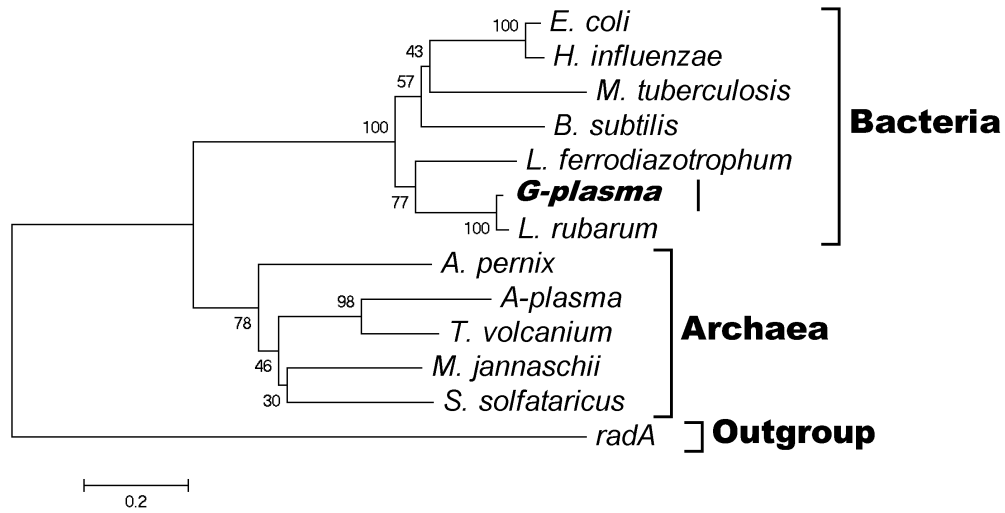


Figure S4: Phylogenetic tree of *RplR* gene family.

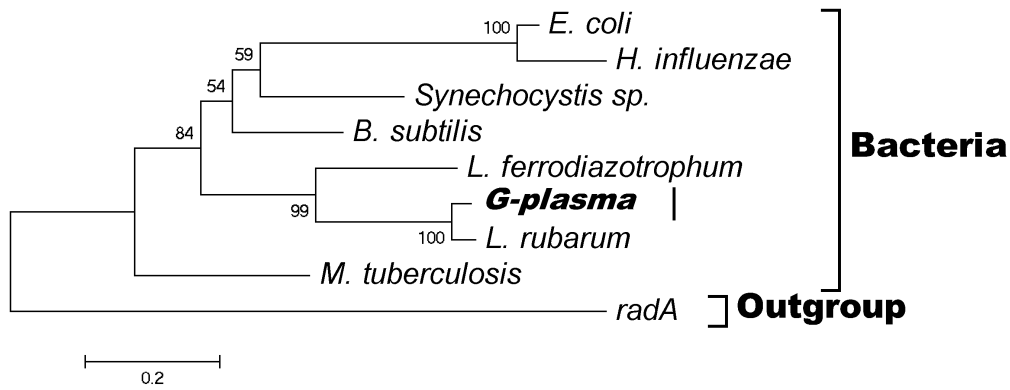


Figure S5: Phylogenetic tree of *RpsJ* gene family.

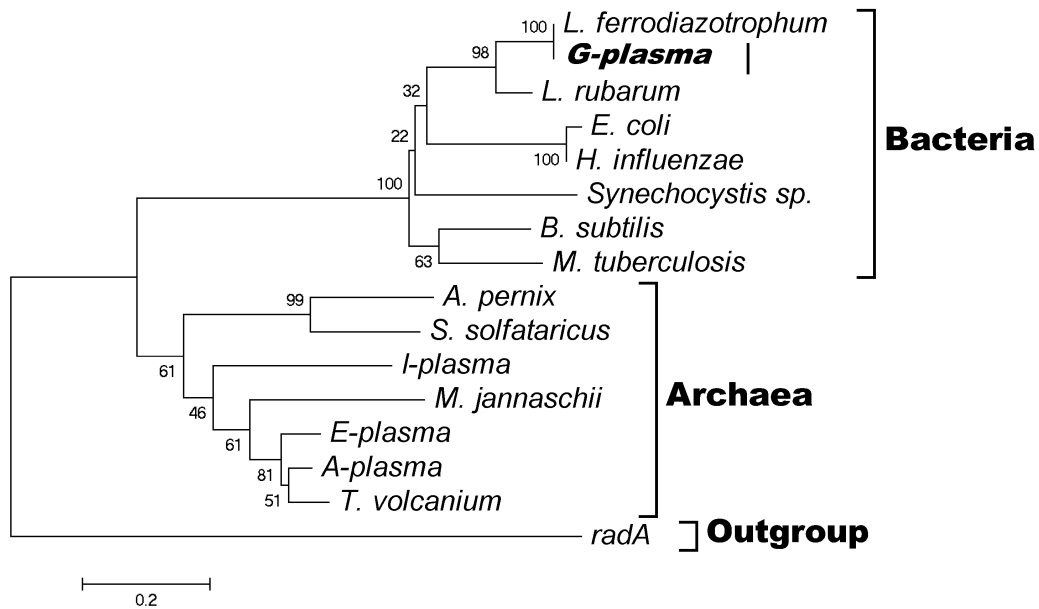


Figure S6: Phylogenetic tree of *RplD* gene family.

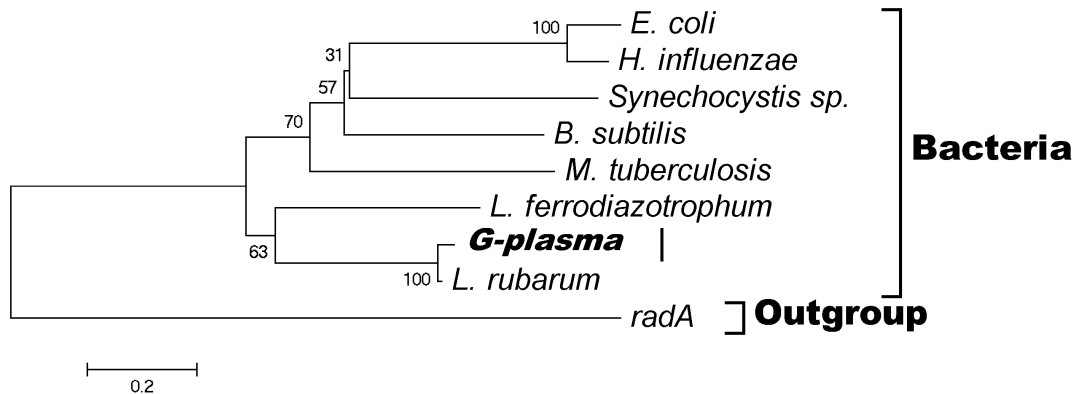


Figure S7: Phylogenetic tree of *RpsC* gene family.

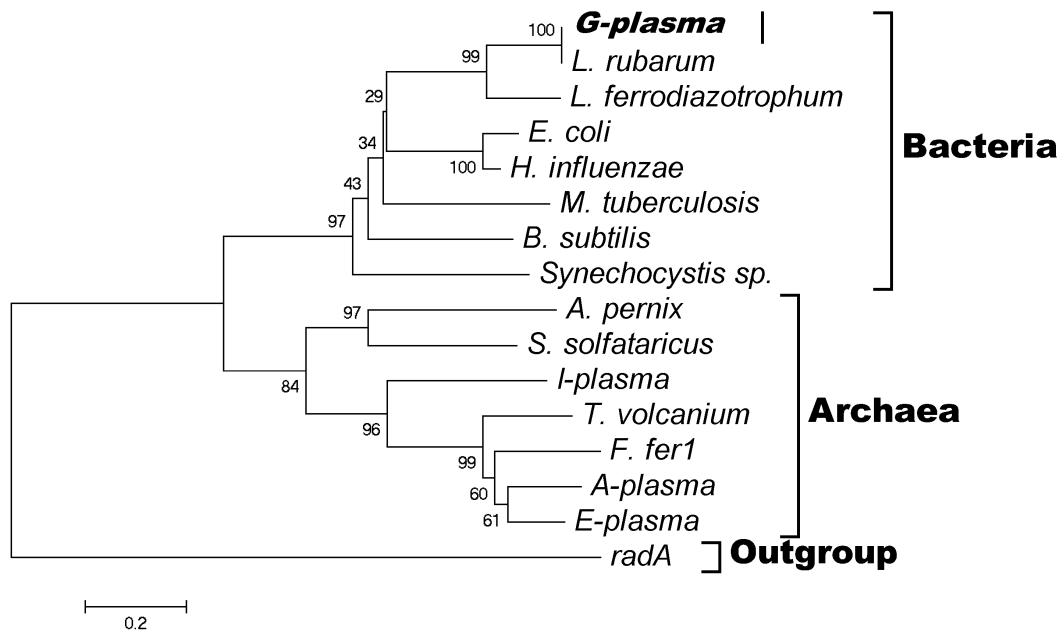


Figure S8: Phylogenetic tree of *RplP* gene family.

