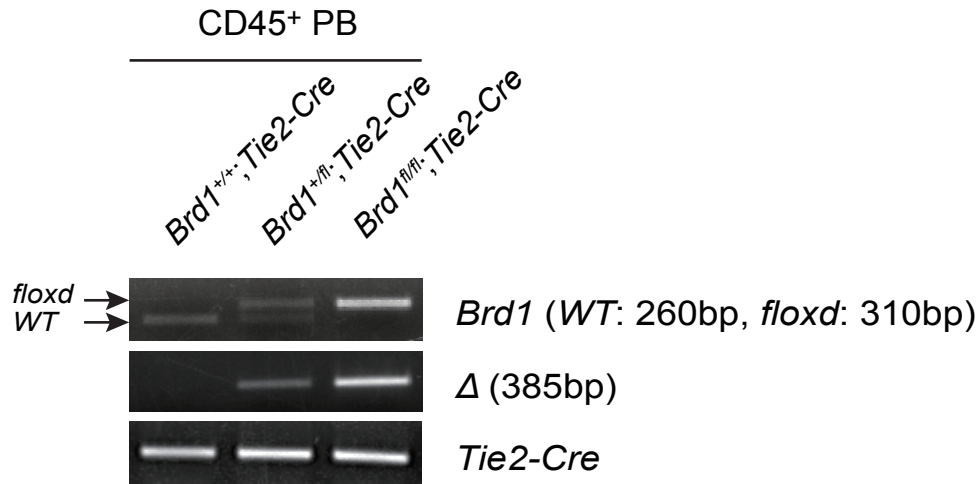
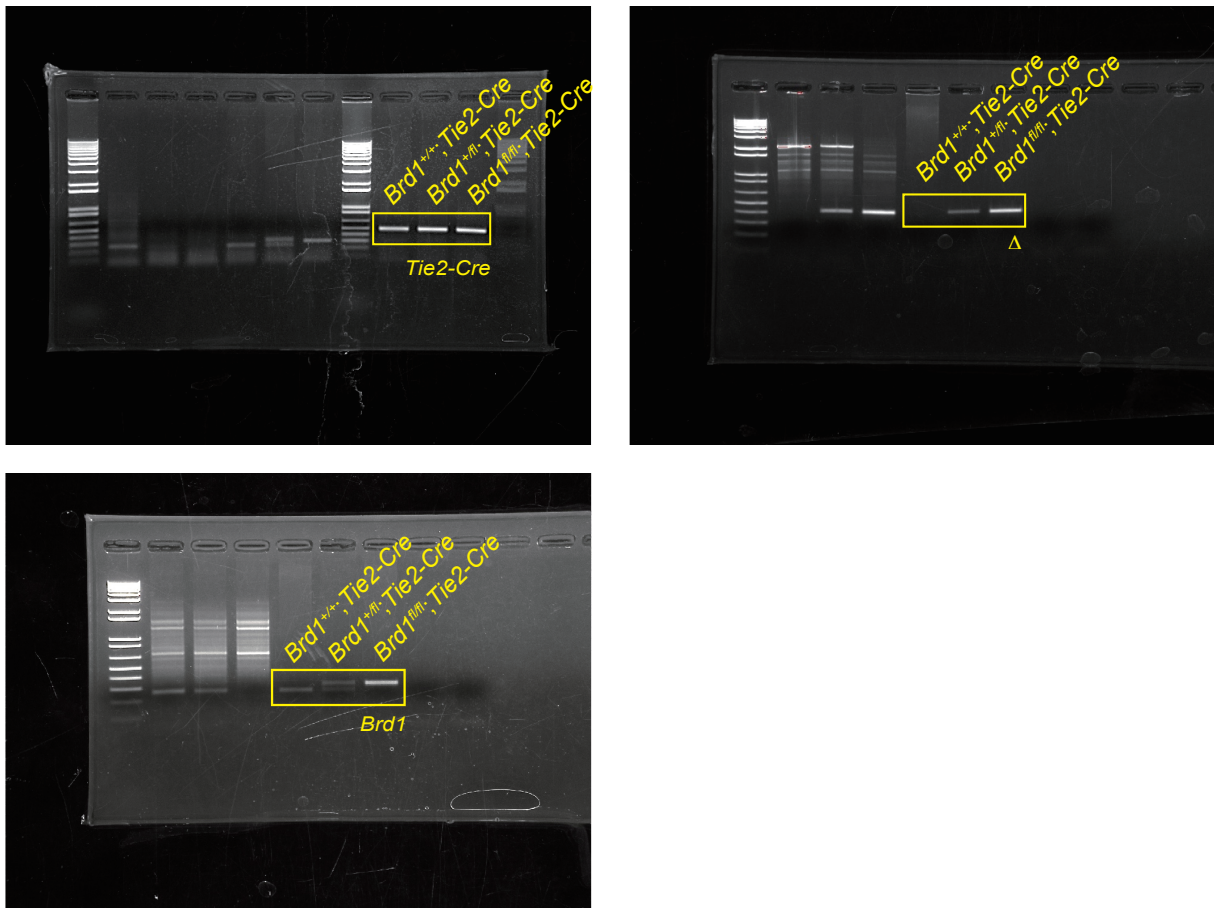


a



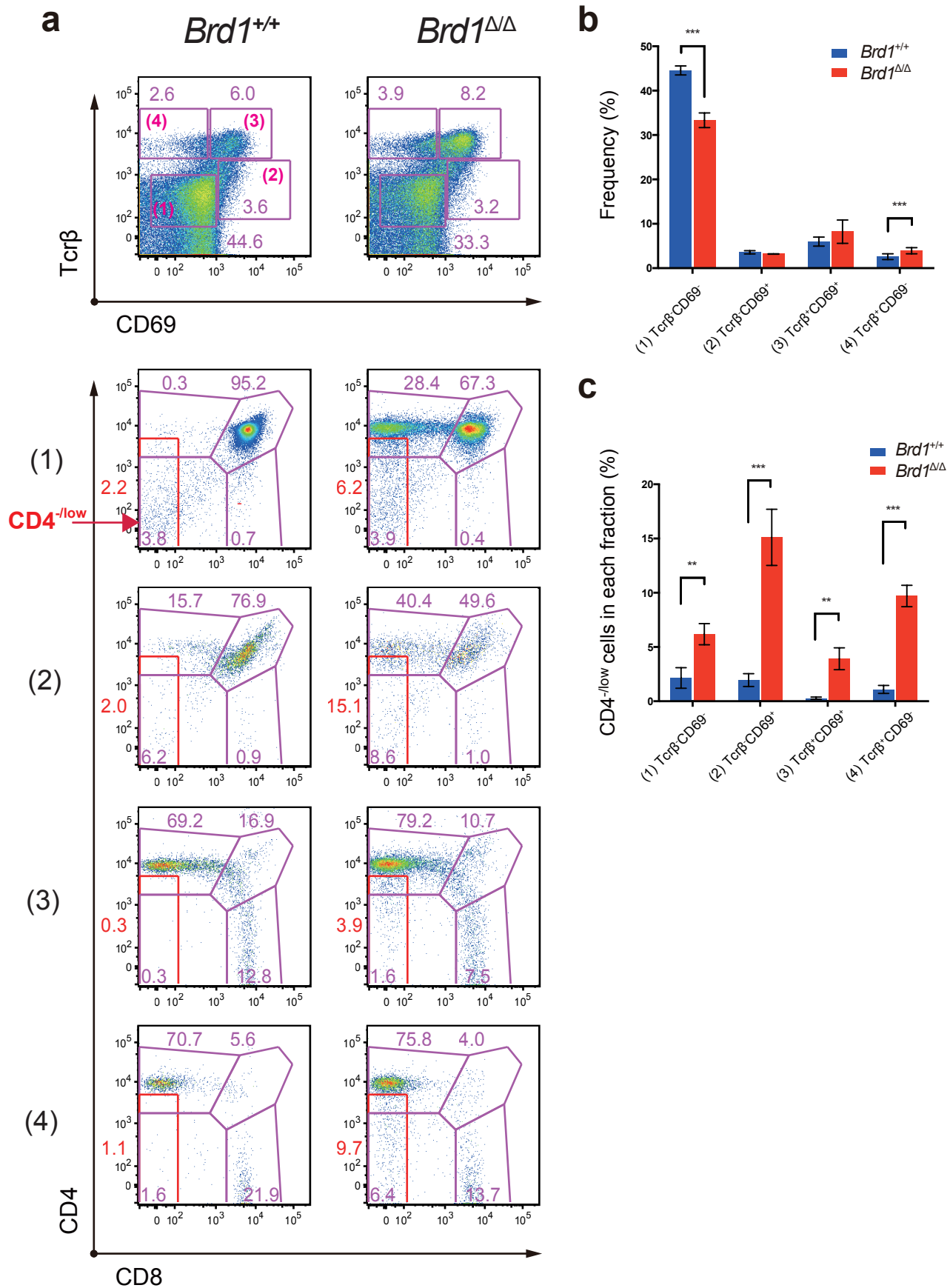
b



Supplementary Figure 1. Efficient deletion of *Brd1* in hematopoietic cells.

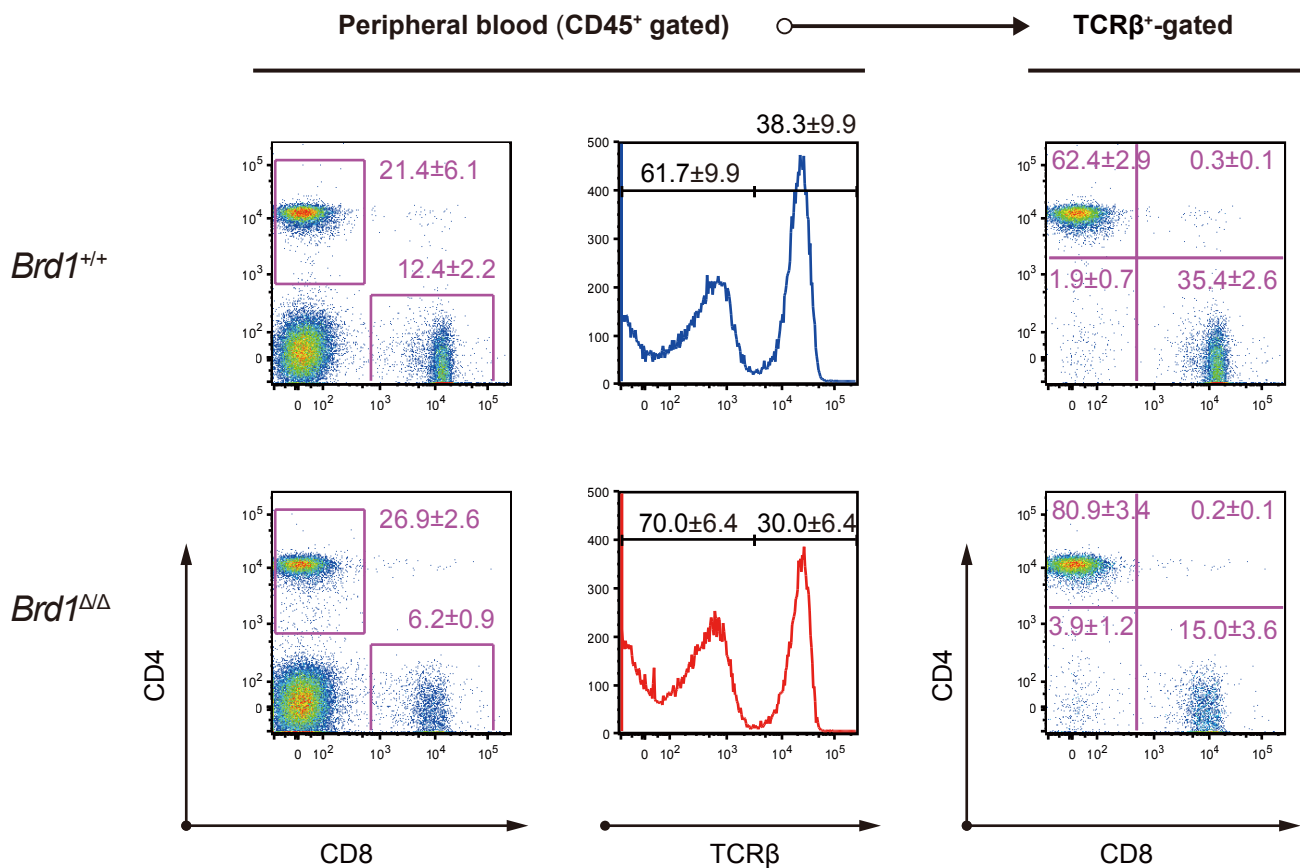
(a) Efficient deletion of *Brd1* in PB CD45⁺ mononuclear cells detected by genomic PCR. Representative genomic PCR showing the deletion of *Brd1*. “WT”, “floxed” and “Δ” alleles indicate the wild-type allele, floxed *Brd1* allele, and floxed *Brd1* allele after removal of exon 2 by Cre recombinase, respectively.

(b) Uncropped raw scans of PCR products used in (a) are presented.



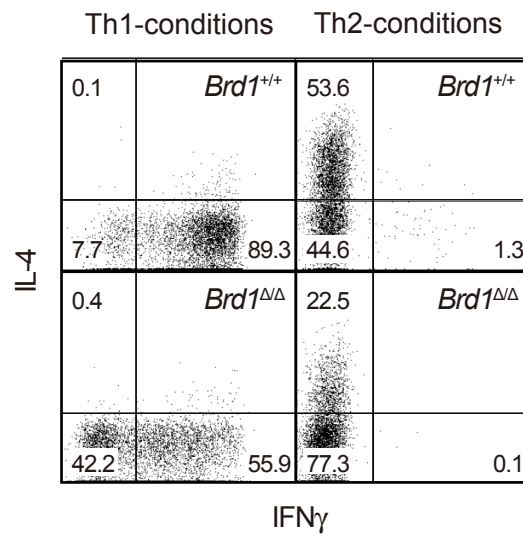
Supplementary Figure 2. CD4 and CD8 expression in thymocytes fractionated for their expression of TCRβ and CD69.

(a) Thymocytes were fractionated into 4 fractions for their expression of TCRβ and CD69 and the representative expression of CD4 and CD8 in each fraction was depicted. CD4^{-low}CD8⁻ cells are boxed in red and their percentages in each fraction are indicated in red. (b) Frequencies of cells in each fraction are presented as mean ± S.D. (*Brd1^{+/+}*, n=4; *Brd1^{Δ/Δ}*, n=3). (c) Frequencies of CD4^{-low}CD8⁻ cells in each fraction are presented as mean ± S.D. (*Brd1^{+/+}*, n=4; *Brd1^{Δ/Δ}*, n=3). ***P* < 0.01 and ****P* < 0.001.



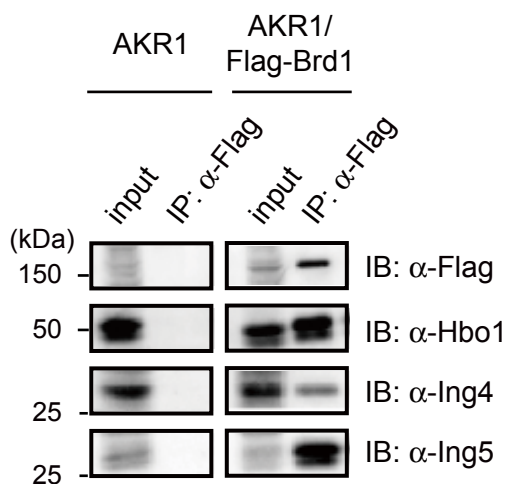
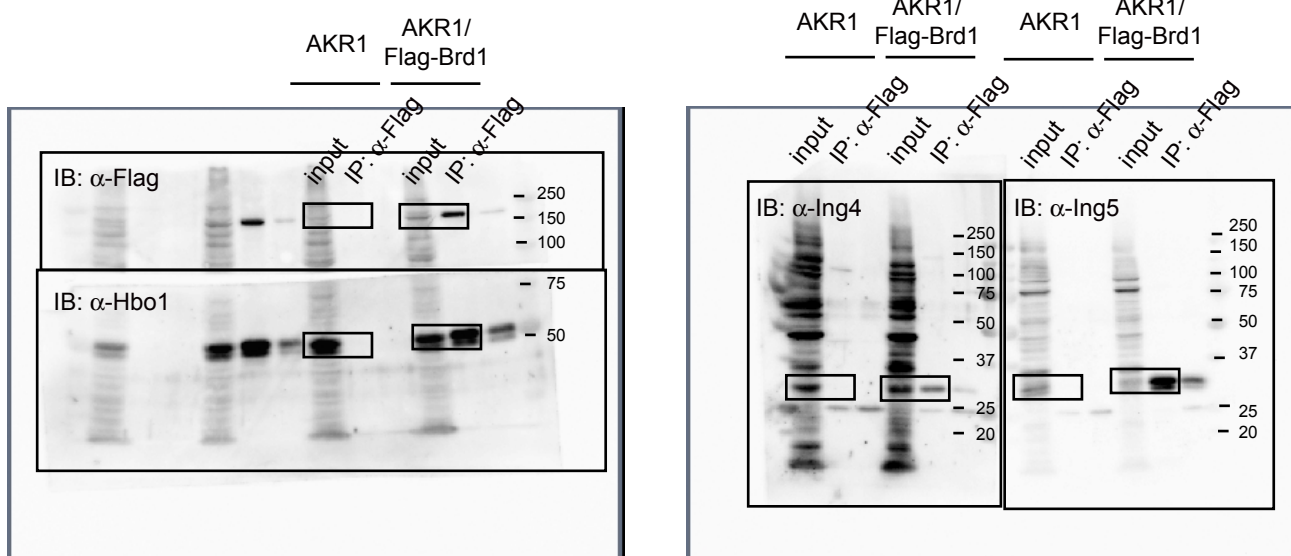
Supplementary Figure 3. Expression of CD4 and CD8 in the PB of *Brd1*-deficient mice.

Representative flow cytometric profiles of CD4 and CD8 expression (left panels), TCR β expression (middle panels), and CD4 and CD8 expression in TCR β ⁺ cells (right panels) in the PB of 8- to 11-week-old *Tie2-Cre* (*Brd1*^{+/+}) and *Tie2-Cre;Brd1^{fl/fl}* (*Brd1*^{Δ/Δ}) mice. Proportion of each gate is indicated. Data are presented as mean ± S.D. (*Brd1*^{+/+}, n=9; *Brd1*^{Δ/Δ}, n=7).



Supplementary Figure 4. Induction of Th1 and Th2 cytokine expression.

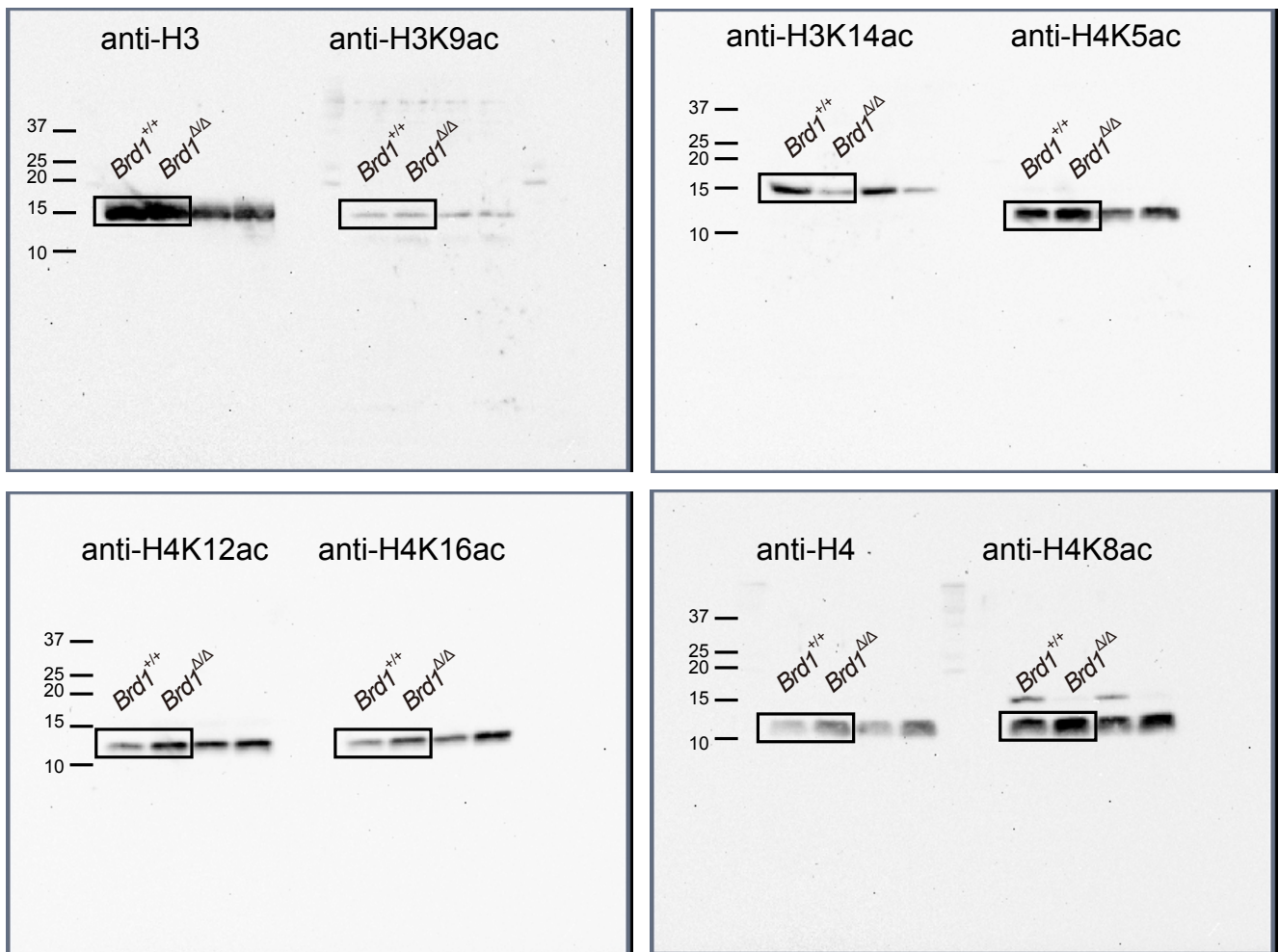
Splenic naïve CD4 T cells from WT and *Tie2-Cre;Brd1^{fl/fl}* mice were stimulated with immobilized anti-TCR β and anti-CD28 mAbs under Th1 or Th2 conditions for 6 d. Representative staining profiles of intracellular IFN- γ and IL-4 are shown with percentages of cells in each quadrant.

a**b**

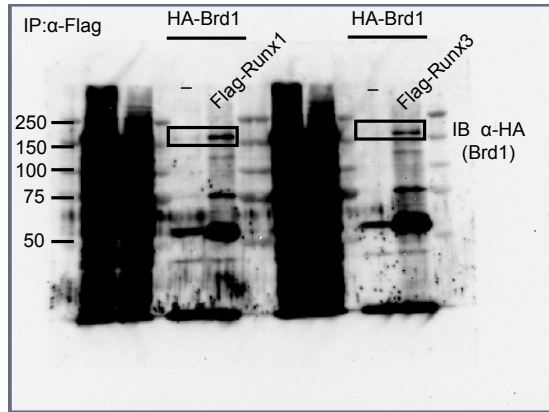
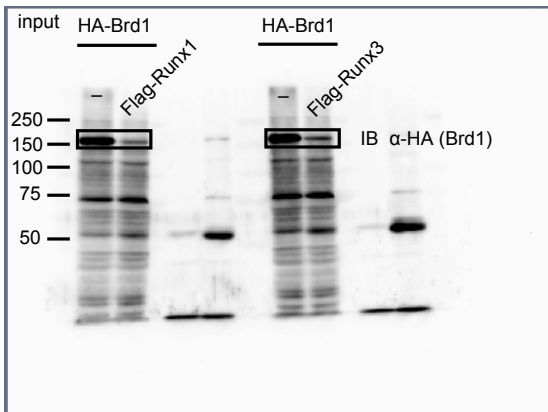
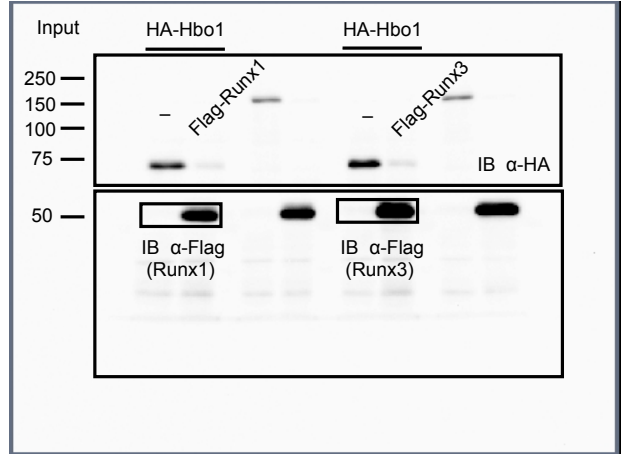
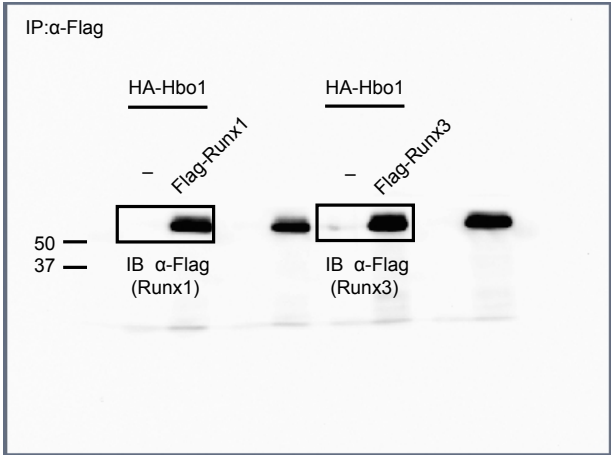
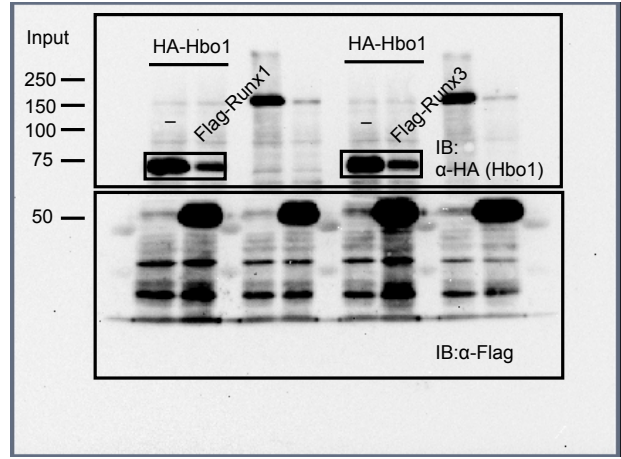
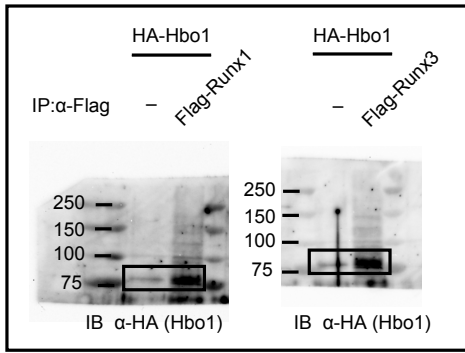
Supplementary Figure 5. Brd1 forms a HAT complex with Hbo1 and Ing4.

(a) Proteins in the lysates of the parental AKR1 cells and AKR1 cells expressing Flag-Brd1 were immunoprecipitated using anti-FLAG antibody, and then immunoprecipitates were detected by Western blotting using anti-Flag, anti-Hbo1 (N-18:sc-13283, SantaCruz, 1:200), anti-Ing4 (ab3714-100, Abcam, 1:1,000) and anti-Ing5 (PTG10665-1-AP, Proteintech, 1:1,000) antibodies.

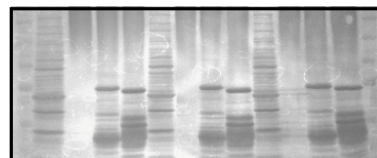
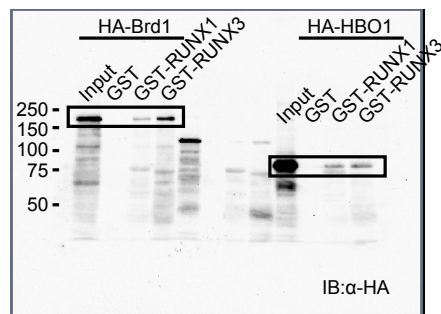
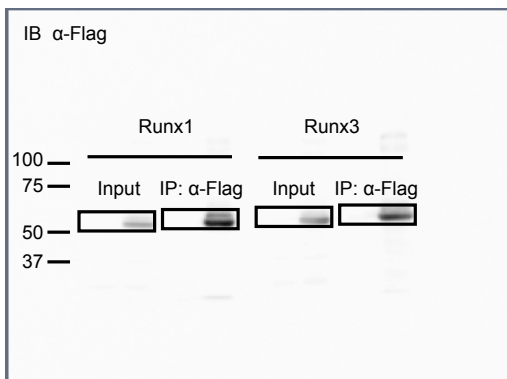
(b) Uncropped raw scans of blots used in (a) are presented.



Supplementary Figure 6. Full blots presented in the Figure 6a.



GST Pull down



CBB staining

Supplementary Figure 7. Full blots presented in the Figure 6c.

Figure 6d

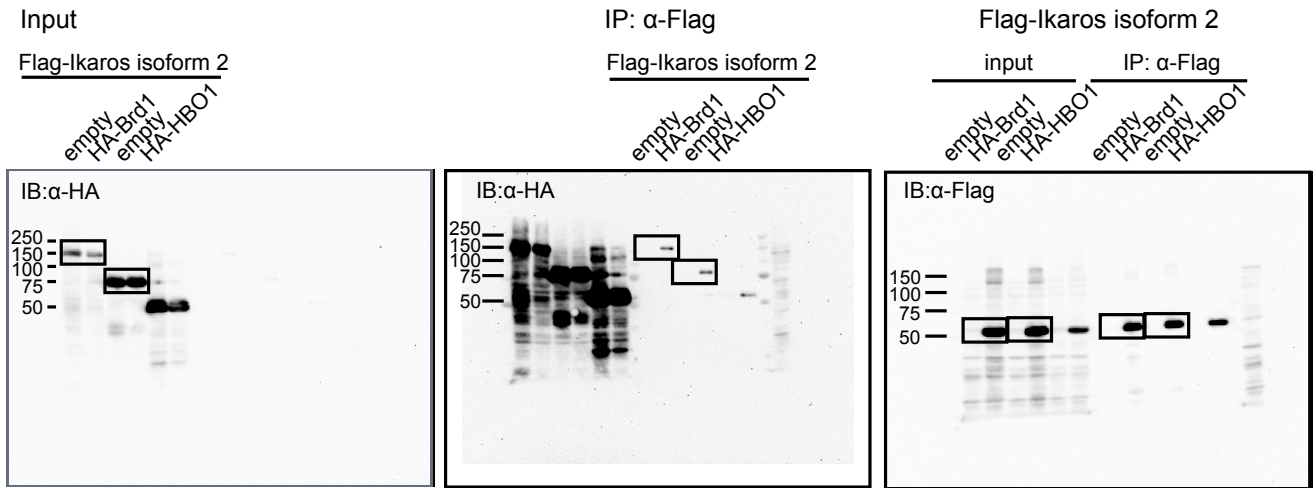
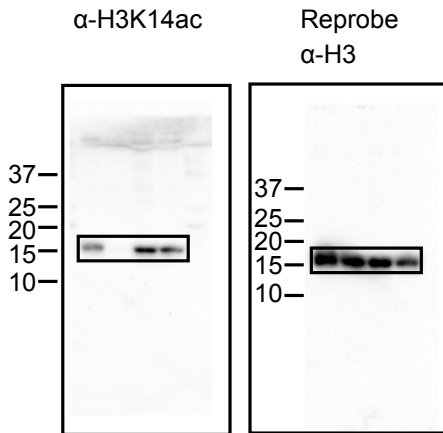


Figure 7b



Supplementary Figure 8. Full blots presented in the Figure 6d and 7b.

Supplementary Table 1. Differentially expressed genes (greater than 2 fold) between Δ/Δ CD4 TCR β -low and +/+ DP cells in microarray analyses

UP - 988 probes [Δ/Δ CD4 TCR β -low] / [+/+ DP] (log2)		Down - 1270 probes [Δ/Δ CD4 TCR β -low] / [+/+ DP] (log2)	
GeneSymb	GeneName	GeneSymb	GeneName
8.0165037	Krt84	-7.2598695	H2-T3
7.9181445	Gm10848	-7.0961638	
7.8418182		-6.9473505	Lrig1
6.9014015		-6.9443629	LOC633411
6.5817342		-6.8955669	H2-T18
6.3714693		-6.3702078	Lrig1
6.3218899	A23005DRIKEN cDNA A23005T006 gene	-6.2181282	H2-T18
6.2746948	Podh12	-5.94526404	Cd8a
6.20241977		-5.9437671	Laptn4b
6.17423395		-5.8374338	
6.1693439		-5.78237872	Cd8a
6.01428078	Ccdc40	-5.7793028	
5.91479		-5.7715253	Thns2
5.81375186	Gm10050	-5.72014789	LOC1005011
5.80720754	Dnm3	-5.715146	
5.78231558		-5.71394837	
5.77238648		-5.693104299	Hmg3
5.717367	Olf701	-5.63436028	Gprc5b
5.699642		-5.405347336	
5.65487532	Agbl3	-5.370441222	
5.504850008	Gm5840	-5.32118735	Dgkg
5.4755974		-5.3134179	
5.43735138		-5.2857334	Igsf3
5.40835376		-5.1473666	Trib2
5.38144538	Mospd4	-5.1450315	Nhs1
5.3485459		-5.11190742	
5.32873194	Pdha2	-5.0714221	Sqrdl
5.28859615		-4.99870452	Rbm24
5.2790913	Xdh	-4.9872372	Picl1
5.27346702	Pip5k1b	-4.92254777	Retnia
5.24824767	Cryba2	-4.90007544	Fam110b
5.0519233		-4.8905849	
4.9989844		-4.8333509	Aim1
4.97560687		-4.8268027	Slc25a24
4.95805106	Olfir1328	-4.8240065	Cagalnact1
4.90640056		-4.8156727	Trf3
4.82536244	Onecut1	-4.71706106	Cytl3
4.82428454	Il17f	-4.6779461	
4.8206959	Rhox4g	-4.6432897	D23004ARIKEN cDNA D23004A04 gene
4.745718		-4.63262855	
4.7349282		-4.6328279	Lysmd2
4.73371212	Olfir342	-4.6014132	Slc7a11
4.7011145		-4.5801162	Tox3
4.6362981	Z110022LRIKEN cDNA Z110022L005 gene	-4.57281395	Fam43a
4.5678518		-4.5467954	Dic2c
4.5564137		-4.5439472	Quct
4.5186491	Gm10822	-4.54261244	Olig3
4.5170694		-4.54123716	
4.51535325		-4.49236395	Lorrf3
4.5110491		-4.45019754	
4.4975767		-4.395503	Tro
4.4173323	Rbfox3	-4.3718466	
4.3735562		-4.2927984	
4.3572724	Olfir1120	-4.2550859	
4.3407657	Gfap	-4.2352567	Chst10
4.33338026	Arhgef10l	-4.2227645	
4.3119962	Adamt1	-4.203960899	Abca1
4.281168	Actg2	-4.18483927	Ube2e2
4.2716713		-4.1709696	Tbeta
4.2659925	Cym	-4.1631956	Ramp3
4.2426145	Ptpm	-4.1562567	
4.2241831		-4.14936446	Ppa2c
4.2066336		-4.1222005	Ramp3
4.1191992		-4.1164975	
4.1053501		-4.116415	Tmcc3
4.097353	Skint11	-4.0645433	Nav2
4.0782885		-4.0537791	Trim16
4.0546841		-4.0507154	
4.0387597		-4.0040902	Trib2
3.9812693	Igh-VJ58	-3.9903459	Vmn1r18l
3.9656809	Nefh	-3.9419323	Trim16
3.9597645	Prr13	-3.9307146	
3.9000167		-3.91900738	Cited4
3.8769627		-3.913084	Macro2
3.8572154	Hga9	-3.8161349	Klk1b2b
3.8217588	Erf3	-3.8120155	Mboat2
3.8191921	Rnf135	-3.80692014	Nr4a2
3.8025498		-3.7899127	
3.7983573		-3.7878468	
3.7706566		-3.7641967	Ppic
3.76726555	Ddc	-3.7569222	Gm52
3.7627196		-3.7471923	
3.7555636	Dkl3	-3.7463943	Ch11
3.741827	Prkg3	-3.7250211	
3.7335973		-3.7070392	Spacal
3.7041069	Tas2l136	-3.7009974	Dact1
3.7027664	Cdkn2a	-3.689005	Foxo6
3.7018997	Ppef2	-3.674003	
3.7013154	Mf2	-3.659851	H2-T3
3.69769206	Ldhld	-3.658893065	
3.68959778		-3.643981	Ccdc109b
3.6781993	D730005E	-3.6417	
3.6733556		-3.62521223	Carp2
3.6598917		-3.6247492	Defb1
3.6566291	Lalba	-3.6143255	Egfbp2
3.643527	Unc13c	-3.6091747	
3.6294609	94300690	-3.5838705	Klk1
3.591444		-3.5720225	Fundc2
3.5727773	Ankr22	-3.5710997	Myo10
3.57107087		-3.56916075	F330223BIRIKEN cDNA F330223B06 gene
3.5518615	Acot1	-3.5572385	Cacng2
3.5370354	Gm10280	-3.5499224	
3.5296426		-3.52714864	Wdr86
3.5209679	Gm11757	-3.5247608	A430035B
3.5194135	Fxyd7	-3.5106745	Tmcc3
3.5027485		-3.500641	
3.5014598	Oca2	-3.5003385	Gm2115
3.4928799	1700026DRIKEN cDNA 1700026D08 gene	-3.49946122	Appb2
3.4893655	Dpfl	-3.4635047	
3.4665079	Tmem17	-3.4116326	Cd8b1
3.406894	Tspan18	-3.3977148	Mast4
3.40679885	Dbx2	-3.3853335	Agpat4
3.3988977		-3.3678975	
3.3834016	Hk3	-3.3602948	Drd4
3.377324		-3.3597965	Spacal1
3.3732748		-3.341139	Slc22a15
3.365296		-3.3409224	Ptk2

3.3306093			-3.3317765 Tmem35	transmembrane protein 35
3.32979318 Ms4a6b	membrane-spanning 4-domains, subfamily A, member 6B		-3.3271795 Acpp	acid phosphatase, prostate
3.3226058			-3.3257178 Pdlm5	PDZ and LIM domain 5
3.3036146			-3.3235316	
3.29204367 Stra8	stimulated by retinoic acid gene 8		-3.3087539 Syt12	synaptotagmin-like 2
3.2813649 2010107G	RIKEN cDNA 2010107G12 gene		-3.2871495 Tmem2	transmembrane protein 2
3.255848			-3.2848643 Fhl2	four and a half LIM domains 2
3.2490644 H19	H19 fetal liver mRNA		-3.2816035 Slc27a6	solute carrier family 27 (fatty acid transporter), member 6
3.2351545 Wnt10a	wingless related MMTV integration site 10a		-3.2777748 Oasl2	2'-5' oligoadenylate synthetase-like 2
3.2157102 Gm14137	predicted gene 14137		-3.2740636	
3.2153654 Shpk	sedoheptulokinase		-3.27350139 Bag3	BCL2-associated athanogene 3
3.2112854 Gm525	predicted gene 525		-3.2732946 LOC10050	hypothetical LOC100502767
3.2077063 Gm12409	predicted gene 12409		-3.2655826 Mettl11b	methyltransferase like 11B
3.2026892			-3.2590957	
3.1908342			-3.2504244	
3.1905651 Krt5	keratin 5		-3.2477098 Fxyd6	FXVD domain-containing ion transport regulator 6
3.1790188 Mfl1p	myeloid leukemia factor 1 interacting protein		-3.2435111 Pde6a	phosphodiesterase 6A, cGMP-specific, rod, alpha
3.1767939 Bst1	bone marrow stromal cell antigen 1		-3.2426329	
3.169522			-3.23441609	
3.155092 AA416453	expressed sequence AA416453		-3.23441609 Gask	calcium/calmodulin-dependent serine protein kinase (MAGUK family)
3.1473579 Bspry	B-box and SPRY domain containing		-3.2058878 Bex1	brain expressed gene 1
3.1466355			-3.20161315	
3.1462773			-3.1889173	
3.13882926 Ston1	stonin 1		-3.18287799 Macro2d	MACRO domain containing 2
3.1308917			-3.1818695	
3.1155758			-3.181448 C4209e	CD209e antigen
3.0968414			-3.179425	
3.0941654			-3.177992 Tanc1	tetratricopeptide repeat, ankyrin repeat and coiled-coil containing 1
3.0914278 C030013G	RIKEN cDNA C030013G03 gene		-3.175235	
3.0740281			-3.1695852 Fbxw10	F-box and WD-40 domain protein 10
3.0736979 Pydc4	pyrin domain containing 4		-3.1609097 Kik1b5	kallikrein 1-related peptidase b5
3.0577021 Fam132b	family with sequence similarity 132, member B		-3.160014 Car2	carbonic anhydrase 2
3.05207346 Gm5429	predicted gene 5429		-3.15331394	
3.050465			-3.1525355 Zmynd15	zinc finger, MYND-type containing 15
3.029706			-3.1474957 Sept4	septin 4
3.0219613			-3.1470363 Sept4	septin 4
3.0217786			-3.146568 4930557J	RIKEN cDNA 4930557J02 gene
3.0109611			-3.1386829	
2.9917349 A530065N	hypothetical protein A530065N20		-3.12533813 Hspa1a	heat shock protein 1A
2.9842464 Flt4	FMS-like tyrosine kinase 4		-3.121133 LorrF3	LON peptidase N-terminal domain and ring finger 3
2.9809278 Olfr130	olfactory receptor 130		-3.1186633 Chl1	cell adhesion molecule with homology to LICAM
2.9678555 Tcrg-V2	T-cell receptor gamma, variable 2		-3.1148753 Wdsub1	WD repeat, SAM and U-box domain containing 1
2.9644084 Fanco	Fanconi anemia, complementation group C		-3.1134391	
2.9570508 A1480461	expressed sequence A1480461		-3.1073347 Ubd	ubiquitin D
2.9538587			-3.1015996	
2.9473132 Pcdhb16	protocadherin beta 16		-3.08497524 Gdpd3	glycerophosphodiester phosphodiesterase domain containing 3
2.9416015 2310001H	RIKEN cDNA 2310001H17 gene		-3.082785 Nfam1	Nfat activating molecule with ITAM motif 1
2.9295396 Lats2	large tumor suppressor 2		-3.0780244 Ch25h	cholesterol 25-hydroxylase
2.9291397 Flrt1	fibronectin leucine rich transmembrane protein 1		-3.0778608	
2.9272094			-3.0713434 Ext1	extostoses (multiple) 1
2.919023 1700040G	RIKEN cDNA 1700040G22 gene		-3.068018 Cask	calcium/calmodulin-dependent serine protein kinase (MAGUK family)
2.9186463 Xcl1	chemokine (C motif) ligand 1		-3.0496237 Klf9	Kruppel-like factor 9
2.9167914			-3.04753159 Matn2	matrin 2
2.909735			-3.0465203 Crmp1	collapsin response mediator protein 1
2.9054164 Slc29a4	solute carrier family 29 (nucleoside transporters), member 4		-3.045517 5330417C	RIKEN cDNA 5330417C22 gene
2.900403			-3.0328317 Fry	furry homolog (Drosophila)
2.8996066 Gm7269	predicted gene 7269		-3.0311122	
2.8976927 Pla2g2d	phospholipase A2, group IID		-3.03088719 Ccdc164	coiled-coil domain containing 164
2.8961353			-3.030127	
2.8951265 Ppp1r1c	protein phosphatase 1, regulatory (inhibitor) subunit 1C		-3.0203963 Tbeta	thymus, brain and testes associated phospholipase C-like 1
2.88506124			-3.01149703 Plcl1	phospholipase C-like 1
2.878948 Msh5	mutS homolog 5 (E. coli)		-2.9965076 6330509M	RIKEN cDNA 6330509M05 gene
2.8783662 C430049B	RIKEN cDNA C430049B03 gene		-2.9946318 Trhr	thyrotropin releasing hormone receptor
2.8624052			-2.9922925 Pr-r18	proline rich region 18
2.8618553			-2.99209432	
2.8574331 Lrp11	low density lipoprotein receptor-related protein 11		-2.98735715	
2.8538334 Nrg4	neuregulin 4		-2.985571 Nav2	neuron navigator 2
2.8466124 Car9	carbonic anhydrase 9		-2.9852519	
2.8461867			-2.9738349 Sec24d	Sec24 related gene family, member D (S. cerevisiae)
2.8397127 48215170	RIKEN cDNA 4821517011 gene		-2.9708724	
2.8384266 Ly86	lymphocyte antigen 86		-2.9660396 Mocos	molybdenum cofactor sulfurase
2.8361517			-2.959248615	
2.82273 B3gat5	UDP-GalbetaGlcNAc beta 1,3-galactosyltransferase, polypeptide 5		-2.9572625 Flcn	folliculin
2.8214288			-2.9535949 Fut10	fucosyltransferase 10
2.8174506			-2.9515384 Tox3	TOX high mobility group box family member 3
2.8144312			-2.9502544 Fam134b	family with sequence similarity 134, member B
2.8113594 Epcam	epithelial cell adhesion molecule		-2.9496433 Jun	Jun oncogene
2.8106622 Ifi203	interferon activated gene 203		-2.9309052 Synm	synemin, intermediate filament protein
2.8003267			-2.9275289 Kik1b24	kallikrein 1-related peptidase b24
2.7949633 Rbm44	RNA binding motif protein 44		-2.9255409	
2.7947906			-2.9228167 Tceal1	transcription elongation factor A (SII)-like 1
2.785315 Vps53	vacuolar protein sorting 53 (yeast)		-2.9220534 Rapgef5	Rap guanine nucleotide exchange factor (GEF) 5
2.78009586 Esm1	endothelial cell-specific molecule 1		-2.9210825	
2.7786047			-2.9090147 Clu	clusterin
2.769107			-2.9082165	
2.7667117			-2.9063549 Slc25a41	solute carrier family 25, member 41
2.7584538			-2.9062939 9430020K	RIKEN cDNA 9430020K01 gene
2.7567845 Ccd1631	CD163 molecule-like 1		-2.90104 Afp	alpha fetoprotein
2.7545958			-2.8974828 Ppfbp2	PTPRF interacting protein, binding protein 2 (liprin beta 2)
2.745114 Trim42	tripartite motif-containing 42		-2.8951339	
2.7377882			-2.8947897 Mpz11	myelin protein zero-like 1
2.7370456			-2.8864894 5530400C	RIKEN cDNA 5530400C23 gene
2.7334156 Gm11568	predicted gene 11568		-2.8856773 Ankrd6	ankyrin repeat domain 6
2.7316637 Dlk1	delta-like 1 homolog (Drosophila)		-2.8848895 Ccdc54	coiled-coil domain containing 54
2.7257324			-2.8839875 Fam174b	family with sequence similarity 174, member B
2.715256 Odz1	odd Oz/ten-m homolog 1 (Drosophila)		-2.8827138	
2.7136115 Vmn1r121	vomerin 121		-2.8789277	
2.7086239 Gm8359	predicted gene 8359		-2.8760632 Pdlm5	PDZ and LIM domain 5
2.7085462 Slc5a9	solute carrier family 5 (sodium/glucose cotransporter), member 9		-2.8707231	
2.7079559			-2.8654172	
2.7002618 Elnf2	leucine rich repeat and fibronectin type III, extracellular 2		-2.864687 Elovf7	ELOVL family member 7, elongation of long chain fatty acids (yeast)
2.6929896 Ppgep11	pyroglutamyl-peptidase I-like		-2.8633475 Etv1	ets variant gene 1
2.6639166			-2.86321593 Olf566	olfactory receptor 566
2.6614978 Gm13152	predicted gene 13152		-2.8618007 Rg3	ral guanine nucleotide dissociation stimulator-like 3
2.6447264			-2.861186 Pex11c	peroxisomal biogenesis factor 11 gamma
2.641563414 Mcoln2	mucoilin 2		-2.8611741 LOC87439	zinc finger protein 665-like
2.6412298			-2.85615886 Cd9	CD9 antigen
2.63374803 Dtx1	deltax 1 homolog (Drosophila)		-2.8551274	
2.6291089 Tmem67	transmembrane protein 67		-2.8546137	
2.6259727			-2.8495788	
2.618411 Nefh	neurofilament, heavy polypeptide		-2.8455295 Abhd6	abhydrolase domain containing 6
2.6161333			-2.8448801 Grasp2	G protein-coupled receptor associated sorting protein 2
2.6095692 Kiss1r	KISS1 receptor		-2.8405633 Gm12253	predicted gene 12253
2.6026978 Hif3a	hypoxia inducible factor 3, alpha subunit		-2.83550455 Sn11a	sodium channel, voltage-gated, type XI, alpha
2.6021894			-2.8347697 Inpp4b	inositol polyphosphate-4-phosphatase, type II
2.6019662 Acof6	acyl-CoA thioesterase 6		-2.8331031 Rimk1a	ribosomal modification protein rimK-like family member A
2.5991936 Ehd3	EH-domain containing 3		-2.8320179	
2.5977554 Spats1	spermatogenesis associated, serine-rich 1		-2.8311681 Ab956758	expressed sequence Ab956758
2.5970659			-2.8299703 4930512B	RIKEN cDNA 4930512B01 gene
2.5968781			-2.8240624 Ptgir	prostaglandin I receptor (IP)
2.5957638			-2.8188854 Zfp185	zinc finger protein 185
2.587605			-2.8182096 Fzd10	frizzled homolog 10 (Drosophila)
2.5828712 Slc26a7	solute carrier family 26, member 7		-2.8169599	
2.572547			-2.8167266	
			-2.8096686	
			-2.8071156 Oas2	2'-5' oligoadenylate synthetase 2

2.572388 Ceacam16 carcinoembryonic antigen-related cell adhesion molecule 16
2.565726 Wdr93 WD repeat domain 93
2.56409458 Acot5 acyl-CoA thioesterase 5
2.5591369
2.558219
2.5578408
2.5565792
2.55595
2.5545015 Slc29a2 solute carrier family 29 (nucleoside transporters), member 2
2.5492263
2.5453272 Mpp4 membrane protein, palmitoylated 4 (MAGUK p55 subfamily member)
2.5308354
2.5262663 Ly6d lymphocyte antigen 6 complex, locus D
2.525467
2.5234936
2.51862217 Acot5 acyl-CoA thioesterase 5
2.5183864 Rundc3a RUN domain containing 3A
2.5177219
2.5153223 Podn15 protocadherin 15
2.5108416 Snc3 superoxide dismutase 3, extracellular
2.5107085 Cx38 chemokine (C-C motif) ligand 8
2.5091398 Zfp937 zinc finger protein 937
2.5019679
2.5018344 Qvin1 GTPase, very large interferon inducible 1
2.5007564 Odf3 outer dense fiber of sperm tails 3
2.495927 Rarb retinoic acid receptor, beta
2.4984813 4830509E1RIKEN cDNA 4930509E16 gene
2.4962526
2.4960227 Pascin3 protein kinase C and casein kinase substrate in neurons 3
2.4943343
2.4919781 Polr3c polymerase (RNA) III (DNA directed) polypeptide E
2.4901051 Nlrp1b NLR family, pyrin domain containing 1B
2.4899044 Tle1 transducin-like enhancer of split 1, homolog of Drosophila E[split]
2.4782715 0610037L1RIKEN cDNA 0610037L13 gene
2.4748671
2.4732082
2.471098 S100a1 S100 calcium binding protein A1
2.4697757 Adam12 a disintegrin and metalloproteinase domain 12 (meltrin alpha)
2.4656726 Clp4 CAP-GLY domain containing linker protein family, member 4
2.4645491 Lyl1 lymphoblastic leukemia 1
2.4628592 Capsl calyphosine-like
2.4608476
2.4507907 1700001L1RIKEN cDNA 1700001L05 gene
2.448228
2.44277 Soot2 sterol O-acyltransferase 2
2.4406787
2.4391042 Pdgfrl platelet-derived growth factor receptor-like
2.4388711
2.4363989 Prdm16 PR domain containing 16
2.4267463 Abhd14a abhydrolase domain containing 14A
2.4266648
2.426385 Firt1 fibronectin leucine rich transmembrane protein 1
2.4258653
2.4199718 LOC10004hypothetical LOC100044438
2.41574622 Ncf4 neutrophil cytosolic factor 4
2.4154722
2.4136732 Slc13a4 solute carrier family 13 (sodium/sulfate symporters), member 4
2.4080034
2.4078813 Wscd1 WSC domain containing 1
2.4055905
2.4029207
2.40124174 Hif3a hypoxia inducible factor 3, alpha subunit
2.4005866 Gm11627 predicted gene 11627
2.3990079 Zfp160 zinc finger protein 160
2.3977459
2.39462 Krtap1-5 keratin associated protein 1-5
2.3909731
2.3862134 Rbfox3 RNA binding protein, fox-1 homolog (C. elegans) 3
2.3857527
2.385414 Mt15 metallothionein-like 5, testis-specific (testin)
2.3833542 Osbp11a oxysterol binding protein-like 1A
2.3822803 Cd72 CD72 antigen
2.3821365
2.38145544
2.3779053 Gm3807 predicted gene 3807
2.3712953
2.3682551 Cpsf4l cleavage and polyadenylation specific factor 4-like
2.3656986
2.3627062 Col25a1 collagen, type XXV, alpha 1
2.3626523 Olf794 olfactory receptor 794
2.3610625 Cage1 cancer antigen 1
2.3515987
2.350708 Nrg4 neuregulin 4
2.3490314
2.3461917 Fam71b family with sequence similarity 71, member B
2.3443994 Vps24 vacuolar protein sorting 24 (yeast)
2.3383069
2.3358494
2.3328816 Nudcd1 NudC domain containing 1
2.2990723
2.28899527 Cxcr6 chemokine (C-X-C motif) receptor 6
2.25162459
2.2380338 Wdr25 WD repeat domain 25
2.23560427 Pdlim4 PDZ and LIM domain 4
2.225851 2210010C1RIKEN cDNA 2210010C17 gene
2.21954156 Rcn3 reticulocalbin 3, EF-hand calcium binding domain
2.21660373 Rnf135 ring finger protein 135
2.21101184
2.20672326 Slc5a9 solute carrier family 5 (sodium/glucose cotransporter), member 9
2.19962545 Litaf LPS-induced TN factor
2.19174814 Armc3 armadillo repeat containing 3
2.1902022
2.1853209
2.1840472 Osbp11a oxysterol binding protein-like 1A
2.17881491 Cabp1 calcium binding protein 1
2.17672064 Cabyr calcium-binding tyrosine-(Y)-phosphorylation regulated (fibrous) heat
2.17495775 Fam40b family with sequence similarity 40, member B
2.163245244 Cxcr6 chemokine (C-X-C motif) receptor 6
2.16036365 1500035N1RIKEN cDNA 1500035N22 gene
2.1602101 Gm3596 predicted gene 3596
2.1318321 Rgs16 regulator of G-protein signaling 16
2.1227503 Ozd1 odd Oz/ten-m homolog 1 (Drosophila)
2.11330084 AW112010expressed sequence AW112010
2.110018348 Etd2 EP300 interacting inhibitor of differentiation 2
2.100080503
2.09531596 Jdp2 Jun dimerization protein 2
2.08469024
2.0740833 Cenpv centromere protein V
2.07032823 Greb1 gene regulated by estrogen in breast cancer protein
2.06484846
2.0470314 Ppp3cc protein phosphatase 3, catalytic subunit, gamma isoform
2.0409479 Uaca uveal autoantigen with coiled-coil domains and ankyrin repeats
2.0367131 Prr7 proline rich 7 (synaptic)
2.0326938
2.03174826 Il7r interleukin 7 receptor
-2.807039 BC022302 cDNA sequence BC022302
-2.806105 Acdb7 acyl-Coenzyme A binding domain containing 7
-2.7947735 Fhdc1 FH2 domain containing 1
-2.7934503 Ttl3 tubulin tyrosine ligase-like family, member 3
-2.7906499 Lgal2 lectin, galactose-binding, soluble 2
-2.7898393 Gm3002 alpha-takusan pseudogene
-2.789618 Mcf2 mcf2 transforming sequence-like
-2.7845409 B430203I2RIKEN cDNA B430203I24 gene
-2.7740547 Ptpdc1 protein tyrosine phosphatase domain containing 1
-2.7734608 Ptpnj protein tyrosine phosphatase, receptor type, J
-2.771543 Tanc1 tetratricopeptide repeat, ankyrin repeat and coiled-coil containing 1
-2.768702
-2.7676422 Pde11a phosphodiesterase 11A
-2.765254
-2.7633166 Crf1 cytokine receptor-like factor 1
-2.7615304
-2.7596381
-2.7576984 Arid3b AT rich interactive domain 3B (BRIGHT-like)
-2.7546979 Olf380 olfactory receptor 380
-2.751442
-2.7452845 Spin2 spinidin family, member 2
-2.7437602
-2.74017425 Goc1 glycanin 1
-2.738781 Cdk11 cyclin-dependent kinase-like 1 (CDC2-related kinase)
-2.735499
-2.7354939
-2.729847 Mtf1 microphthalmia-associated transcription factor
-2.7288123 Slc36a4 solute carrier family 36 (proton/amino acid symporter), member 4
-2.726251
-2.7245688
-2.7168437 Tdrd7 tudor domain containing 7
-2.71389864 Ar5c ADP-ribosylation factor-like 5C
-2.712863 Fam46a family with sequence similarity 46, member A
-2.7020436
-2.7009029 Pla3 plastin 3 (T-isoform)
-2.699193 4930452B1RIKEN cDNA 4930452B06 gene
-2.6918335 Ldhb lactate dehydrogenase B
-2.6774001 Gng12 guanine nucleotide binding protein (G protein), gamma 12
-2.6750174 Crab3l2 cAMP responsive element binding protein 3-like 2
-2.6729905
-2.6729138
-2.6519489
-2.64875
-2.6483445 Cxadr coxsackie virus and adenovirus receptor
-2.6483206 Ppfbp2 PTPRF interacting protein, binding protein 2 (liprin beta 2)
-2.642189
-2.6380178 Napb N-ethylmaleimide sensitive fusion protein attachment protein beta
-2.6339923 Cyp2d10 cytochrome P450, family 2, subfamily d, polypeptide 10
-2.6306996 6720462K1RIKEN cDNA 6720462K09 gene
-2.6238179
-2.6233296 LOC10050hypothetical protein LOC100503728
-2.62292 Zfx2 zinc finger homeobox 2
-2.61977534
-2.6196754
-2.615163
-2.61350205 Zcchc12 zinc finger, CCHC domain containing 12
-2.60773 Cdc88a coiled coil domain containing 88A
-2.60769406 Wdr27 WD repeat domain 27
-2.6054249
-2.6053425
-2.6030415 2810025M1RIKEN cDNA 2810025M15 gene
-2.5987988 D830019F1RIKEN cDNA D830019F10 gene
-2.598566
-2.5965546
-2.5926187 Doc5 dedicator of cytokinesis 5
-2.5922251 Farp1 FERM, RhoGEF (Arp2/3) and pleckstrin domain protein 1 (chondrocyte-derived)
-2.5921464 4933411E1RIKEN cDNA 4933411E02 gene
-2.590353 Csf2rb colony stimulating factor 2 receptor, beta, low-affinity (granulocyte-macrophage)
-2.588133
-2.5878302 Me1 malic enzyme 1, NADP(+)-dependent, cytosolic
-2.5868184 4930474G1RIKEN cDNA 4930474G06 gene
-2.58467 Cacnb1 calcium channel, voltage-dependent, beta 1 subunit
-2.582926 Gm2518 interferon induced transmembrane protein 2 pseudogene
-2.5802006 Ceacam2 carcinoembryonic antigen-related cell adhesion molecule 2
-2.5770855 Slc15a2 solute carrier family 15 (H+/peptide transporter), member 2
-2.5761313 Me1 malic enzyme 1, NADP(+)-dependent, cytosolic
-2.574928 Mapt microtubule-associated protein tau
-2.5749173 Cobll1 Cobl-like 1
-2.5748488
-2.5741862 Itih5 inter-alpha (globulin) inhibitor H5
-2.56991613 Bex1 brain expressed gene 1
-2.5694892
-2.5693201
-2.56773 Tex22 testis expressed gene 22
-2.562829
-2.5626687
-2.5575318 Zbtb38 zinc finger and BTB domain containing 38
-2.5572576
-2.5531082
-2.5527558
-2.5520327
-2.54799418
-2.5476742 Gm2012 predicted gene 2012
-2.5464277 Sipi secretory leukocyte peptidase inhibitor
-2.54284954 Chst10 carbohydrate sulfotransferase 10
-2.5398653 Gm3366 predicted gene 3366
-2.5370007
-2.5348299 Gm3718 predicted gene 3718
-2.5271711 Sh3r1 SH3 domain containing ring finger 1
-2.5270458
-2.5267349 Gm10860 predicted gene 10860
-2.526464 Mical3 microtubule associated monoxygenase, calponin and LIM domain containing 3
-2.5259828 Zc3h12b zinc finger CCHC-type containing 12B
-2.5241894
-2.5228934
-2.5210052 Gm10847 predicted gene 10847
-2.5202374 Skint5 selection and upkeep of intraepithelial T cells 5
-2.5180004 H2-T10 histocompatibility 2, T region locus 10
-2.5107644 Dclk2 doublecortin-like kinase 2
-2.509287
-2.50814633 Sipa1l2 signal-induced proliferation-associated 1 like 2
-2.5078058 Glt1d1 glycosyltransferase 1 domain containing 1
-2.5024333 D9300230RIKEN cDNA D930023005 gene
-2.5018788
-2.5012049
-2.4999106
-2.4992456 Gimap4 GTPase, IMAP family member 4
-2.4928574 LOC10050hypothetical protein LOC100504348
-2.4926929 Maged1 melanoma antigen, family D, 1
-2.4900278 At11 atlastin GTPase 1
-2.488678 Ptx4 pentraxin 4
-2.48780725 Cbr2 carbonyl reductase 2
-2.486233 Gprc5b G protein-coupled receptor, family C, group 5, member B
-2.4852093 Olfrc339 olfactory receptor 339
-2.48351

2.0237293 Myc	myelocytomatosis oncogene	-2.4826804	
2.01880116 Evi2a	ecotropic viral integration site 2a	-2.481251	Sept10 septin 10
2.002515794		-2.479755	
1.9972194 4830515GRIKEN cDNA 4830515G01 gene		-2.4791915	
1.99358558		-2.4780817	
1.98208194 Sifn8	schlafen 8	-2.4771375	
1.9756823 Acad12	acyl-Coenzyme A dehydrogenase family, member 12	-2.4764005	LOD84050UDP-N-acetylhexosamine pyrophosphorylase-like
1.96844816 Gbp3	guanylate binding protein 3	-2.4743362	
1.96131844 Pus7	pseudouridylyl synthase 7 homolog (S. cerevisiae)	-2.4660715	Tom7 translocase of outer mitochondrial membrane 7 homolog (yeast)
1.96042444 Cpeb1	cytoplasmic polyadenylation element binding protein 1	-2.46307182	Hoxa7 homeobox A7
1.9328923 Ccl4	chemokine (C-C motif) ligand 4	-2.4620376	
1.93305672 Pccr	peroxisomal trans-2-enoyl-CoA reductase	-2.4580269	Irf5 interferon regulatory factor 5
1.93144413 AA667203	expressed sequence AA667203	-2.4577542	Fst follistatin
1.93049004 Pyhin1	pyrin and HIN domain family, member 1	-2.4472723	
1.924649205 Lynx1	Ly6/neurotoxin 1	-2.4456381	Lamc1 laminin, gamma 1
1.9042578 Paq5	progesterin and adipoo receptor family member V	-2.444173	
1.8982606		-2.4437372	
1.8883819 Hlcs	holocarboxylase synthetase (biotin-[propionyl]-Coenzyme A-carbo-	-2.4369261	
1.8719034 Tmem121	transmembrane protein 121	-2.4369269	Tlr2 toll-like receptor 2
1.86711833		-2.435895	Car13 carbonic anhydrase 13
1.8572579 R74862	expressed sequence R74862	-2.4351483	
1.85558353		-2.4300823	Gm10406 predicted gene 10406
1.8510952 Myh10	myosin, light chain 10, regulatory	-2.4266328	Fam49a family with sequence similarity 49, member A
1.8493538 Cytb4	cytohesin 4	-2.4262872	Fam129b family with sequence similarity 129, member B
1.8467397 H2-Ob	histocompatibility 2, O region beta locus	-2.4257321	Vmn2r88 vomeronasal 2, receptor 88
1.8348622 Osal1	2'-5' oligoadenylate synthetase-like 1	-2.4201294	Fam3 Fas apoptotic inhibitory molecule 3
1.83312412 Hmxo1	heme oxygenase (decycling) 1	-2.418984	
1.82386974 Cyslr2	cysteinyl leukotriene receptor 2	-2.4186712	Cntm8 CKLF-like MARVEL transmembrane domain containing 8
1.82372855 Tubb3	tubulin, beta 3	-2.416156	Sh2d5 SH2 domain containing 5
1.82303884 Tcrq-V1	T-cell receptor gamma, variable 1	-2.4149534	Tanc1 tetratricopeptide repeat, ankyrin repeat and coiled-coil containing 1
1.8203908 Akr1c13	aldo-keto reductase family 1, member C13	-2.4148113	Grtp1 GH regulated TBC protein 1
1.81578731 LOC10050	hypothetical protein LOC100503215	-2.4126797	A930030B RIKEN cDNA A930030B08 gene
1.81282996		-2.408683276	Fut10 fucosyltransferase 10
1.7884731 Gbp5	guanylate binding protein 5	-2.4086737	Gulo gulonolactone (L-) oxidase
1.7723221 Trim29	tripartite motif-containing 29	-2.4085789	
1.7700643 Egrd1	erythroid differentiation regulator 1	-2.4061765	Ctu2 cytosolic thiouridylase subunit 2 homolog (S. pombe)
1.7694644		-2.4036033	
1.7690802		-2.4028831	Mast4 microtubule associated serine/threonine kinase family member 4
1.761343 Rpl14	ribosomal protein L14	-2.400556	Ubp1 ureidopropionase, beta
1.7577924 1600012FRIKEN cDNA 1600012F09 gene		-2.3994638	1110067D;RIKEN cDNA 1110067D22 gene
1.742826903 0610009E;RIKEN cDNA 0610009E02 gene		-2.3980765	
1.7419547 Tmem121	transmembrane protein 121	-2.398067	
1.737906 Efhc1	EF-hand domain (C-terminal) containing 1	-2.3970452	Pls3 plastin 3 (T-isoform)
1.7347235 Xlr3b	X-linked lymphocyte-regulated 3B	-2.3963823	Kcnq1ot1 KCNQ1 overlapping transcript 1
1.723669 Filp1l	filamin A interacting protein 1-like	-2.3954198	Rorb RAR-related orphan receptor beta
1.7191463 Esr1	estrogen receptor 1 (alpha)	-2.395121	Emr1 EGF-like module containing, mucin-like, hormone receptor-like sequence 1
1.7142181 Gm6961	predicted gene 6961	-2.3923631	Sbf2 SET binding factor 2
1.71123026		-2.3893051	
1.7088623 BC025920	zinc finger protein pseudogene	-2.3888594	
1.7064858 9030617O;RIKEN cDNA 9030617O03 gene		-2.3872608	Cldn19 claudin 19
1.7002505882 Mln3	mutL homolog 3 (E coli)	-2.3771502	
1.69046878 Akr1e1	aldo-keto reductase family 1, member E1	-2.3762299	Mnda myeloid cell nuclear differentiation antigen
1.68637748 Agrp	agouti related protein	-2.3754395	Rabgap11 RAB GAPase activating protein 1-like
1.67951964 Gbp6	guanylate binding protein 6	-2.3745909	
1.66685775		-2.3740453	
1.6606932 Tmem108	transmembrane protein 108	-2.37380786	Raver2 ribonucleoprotein, PTB-binding 2
1.6559596 Myo5b	myosin VB	-2.3723881	
1.6447249 Plac8	placenta-specific 8	-2.3719774	Fam129b family with sequence similarity 129, member B
1.6445717 Trnfrf14	tumor necrosis factor (ligand) superfamily, member 14	-2.3716907	LOC54734MHCC class I family member
1.64429956 Unc5a	unc-5 homolog A (C. elegans)	-2.3712306	
1.6389737		-2.3695228	Sept8 septin 8
1.6328087 Rab44	RAB44, member RAS oncogene family	-2.3686366	Chn2 chimerin (himaerin) 2
1.6222806		-2.3677850	Rps4y2 ribosomal protein S4, Y-linked 2
1.6217429 Sh3bp5	SH3-domain binding protein 5 (BTK-associated)	-2.3632967	Plk2 polo-like kinase 2 (Drosophila)
1.61151358 Fam163b	family with sequence similarity 163, member B	-2.3602509	Btx bobby sox homolog (Drosophila)
1.6073041 Zfp879	zinc finger protein 879	-2.3584786	
1.6050348 Ifi203	interferon activated gene 203	-2.3580347	Efrb1 ephrin B1
1.5960579 Gm3448	predicted gene 3448	-2.3575354	P2ry14 purinergic receptor P2Y, G-protein coupled, 14
1.5945482 Pgm2	phosphoglucomutase 2	-2.3532345	Slc25a27 solute carrier family 25, member 27
1.593909724 E330016A RIKEN cDNA E330016A19 gene		-2.3505525	Dennk4c DENN/MADD domain containing 4C
1.59191564		-2.3504648	Depdc5 DEP domain containing 5
1.59132196 Polr1b	polymerase (RNA) I polypeptide B	-2.3499144	
1.591208 Tha1	threonine aldolase 1	-2.3483044	Ankrd16 ankyrin repeat domain 16
1.5908871 Fam149b	family with sequence similarity 149, member B	-2.34750322	Camk4 calcium/calmodulin-dependent protein kinase IV
1.5839834 Cd72	CD72 antigen	-2.3468768	Ugt2a1 UDP glucuronosyltransferase 2 family, polypeptide A1
1.58105089 261005D RIKEN cDNA 261005D17 gene		-2.3468318	
1.5781717 Celsr1	cadherin, EGF LAG seven-pass G-type receptor 1 (flamingo homolog)	-2.3457877	Sacs saccin
1.56791447 Trnfr25	tumor necrosis factor receptor superfamily, member 25	-2.344307	Krt8 keratin 8
1.5666976 Hlcs	holocarboxylase synthetase (biotin-[propionyl]-Coenzyme A-carbo-	-2.33861468	Trnfrf12a tumor necrosis factor receptor superfamily, member 12a
1.5662699 Il2ra	interleukin 2 receptor, alpha chain	-2.3359103	
1.56584597		-2.3349009	Fam46c family with sequence similarity 46, member C
1.56259017 Omah	cytidine monophospho-N-acetylneuraminic acid hydroxylase	-2.3296742	Hal histidine ammonia lyase
1.55943492 Nfx	nuclear factor I/X	-2.3295989	Samhd1 SAM domain and HD domain, 1
1.5524224		-2.3277428	
1.5506434 2310047D;RIKEN cDNA 2310047D07 gene		-2.3267112	
1.5456878 Kbtbd11	kelch repeat and BTB (POZ) domain containing 11	-2.3255576	Kifc3 kinesin family member C3
1.545585576 Flywch2	FLYWCH family member 2	-2.3235409	
1.53389164 Tmem59	transmembrane protein 59-like	-2.29865082	Cdon cell adhesion molecule-related/down-regulated by oncogenes
1.5337126 Fam158a	family with sequence similarity 158, member A	-2.2885809	
1.5324106 Srm	spermidine synthase	-2.28496881	
1.5277686 Rab11fp4	RAB11 family interacting protein 4 (class II)	-2.2713136	
1.52635427 Mccc2	methylcrotonoyl-Coenzyme A carboxylase 2 (beta)	-2.26757	
1.52288387 Jak3	Janus kinase 3	-2.25954723	Slc17a8 solute carrier family 17 (sodium-dependent inorganic phosphate cotransporter), member 8
1.52156643 9130230N;RIKEN cDNA 9130230N09 gene		-2.2387281	Sgk1 serum/glucocorticoid regulated kinase 1
1.5172892		-2.23535825	Dusp4 dual specificity phosphatase 4
1.5151263 Gm4055	predicted gene 4055	-2.22232867	4921525O;RIKEN cDNA 4921525O09 gene
1.51181221 Crisppl2	cysteine-rich secretory protein LCCL domain containing 2	-2.22003556	Nhx nuclear factor I/X
1.5049146		-2.21945	Rmnd5a required for meiotic nuclear division 5 homolog A (S. cerevisiae)
1.5001382		-2.155408	Rmnd5a required for meiotic nuclear division 5 homolog A (S. cerevisiae)
1.49823854		-2.1947284	
1.49496362 Omah	cytidine monophospho-N-acetylneuraminic acid hydroxylase	-2.1934149	
1.4882236 Lxr	lipolysis stimulated lipoprotein receptor	-2.1719928	Tsc2d1 TSC22 domain family, member 1
1.48658607 Zfp74	zinc finger protein 74	-2.1441207	
1.486021 Nme4	non-metastatic cells 4, protein expressed in	-2.13933706	Fbln1 fibulin 1
1.4840534 Myo5b	myosin VB	-2.1078172	Rreb1 ras responsive element binding protein 1
1.4835987		-2.10669326	Btbdl1 BTB (POZ) domain containing 11
1.48106717 Crtap	cartilage associated protein	-2.090120765	H2-Aa histocompatibility 2, class II antigen A, alpha
1.4761262 BC003331	cDNA sequence BC003331	-2.08921145	Btbdl9 BTB (POZ) domain containing 9
1.47524123 Tcost3	2-cell-stage, variable group, member 3	-2.07945105	
1.4743297 20101090;RIKEN cDNA 2010109003 gene		-2.0717426	Ctnna1 catenin (cadherin associated protein), alpha 1
1.47309544 Greb1	gene regulated by estrogen in breast cancer protein	-2.05754424	Smoc1 SPARC related modular calcium binding 1
1.46980574		-2.051744	Lrrc50 leucine rich repeat containing 50
1.4682588 Vwa5a	von Willebrand factor A domain containing 5A	-2.0339751	BB163080 expressed sequence BB163080
1.46729614 Atad3a	ATPase family, AAA domain containing 3A	-2.023215167	
1.466850296 26105070 RIKEN cDNA 261050701 gene		-2.0318141	Tns1 tensin 1
1.4649735 Srm	spermidine synthase	-2.0216637	
1.46221734		-2.01215839	
1.4598713 Bag2	BCL2-associated athanogene 2	-2.00046496	
1.4598617 Abcb9	ATP-binding cassette, sub-family B (MDR/TAP), member 9	-1.998653	Aldh1l1 aldehyde dehydrogenase 1 family, member L1
1.45821386		-1.9843358	
1.4515539 Trnfrf1b	tumor necrosis factor receptor superfamily, member 1b	-1.9823813	Scpp1 serine carboxypeptidase 1
1.4487208 Lanc2	LanC (bacterial lantibiotic synthetase component C)-like 2	-1.98215297	Cyp39a1 cytochrome P450, family 39, subfamily A, polypeptide 1
1.4442406 Cyfp1	cytoplasmic FMR1 interacting protein 1	-1.962975986	A430054B;hypothetical protein A430054B03
1.44084696 LOC10004	hypothetical protein LOC100040377	-1.9589719	H2-Eb1 histocompatibility 2, class II antigen E beta
1.44078774 Polr3e	polymerase (RNA) III (DNA directed) polypeptide E	-1.9533618	Gm15800 predicted gene 15800

1.440528 Fggy FGGY carbohydrate kinase domain containing
1.43979886 Zfp239 zinc finger protein 239
1.4386406
1.4369378 Gm11677 predicted gene 11677
1.4364104 Gm15706 predicted gene 15706
1.43563934 1110019D RIKEN cDNA 1110019D14 gene
1.43551733 Eef2k eukaryotic elongation factor-2 kinase
1.43488026 Tmem14a transmembrane protein 14A
1.4338718 1110054M RIKEN cDNA 1110054M08 gene
1.4299841 Zpbp2 zona pellucida binding protein 2
1.4285749 1700071A RIKEN cDNA 1700071A11 gene
1.4272718 Fosl FBJ osteosarcoma oncogene B
1.4250283
1.42377 Tjp2 tight junction protein 2
1.4233733 Nolz1 nucleolar and colled-body phosphoprotein 1
1.423336 3930401B RIKEN cDNA 3930401B19 gene
1.4190902 Serpinb5b serine (or cysteine) peptidase inhibitor, clade B, member 6b
1.41520118
1.4151549 Ifi203 interferon activated gene 203
1.413497 AF067061 cDNA sequence AF067061
1.411889
1.41143615 Zfp661 zinc finger protein 661
1.41044423 Fbxo27 F-box protein 27
1.409008 Pigt phosphatidylinositol glycan anchor biosynthesis, class T
1.4073364 Eef2k eukaryotic elongation factor-2 kinase
1.4067155 Gpatch4 G patch domain containing 4
1.39953999
1.3995214 Tlr7 toll-like receptor 7
1.3984157 A130040M RIKEN cDNA A130040M12 gene
1.39657162 Podnrl podocan-like 1
1.3961078
1.3959174 Gm14484 predicted gene 14484
1.3958535 4933412E RIKEN cDNA 4933412E12 gene
1.3956575 Mtrf1 mitochondrial translational release factor 1
1.3952341 Camk2h2 calcium/calmodulin-dependent protein kinase II inhibitor 2
1.3949536 Cdk6 cyclin-dependent kinase 6
1.3913131 Gmptg N-acetylglucosamine-1-phosphotransferase, gamma subunit
1.39052724
1.3901024 A2id1 AIG2-like domain 1
1.3897028 Cy5b1r cytochrome b5 reductase 1
1.38858415 Glnm glomulin, FKBP associated protein
1.386764508 Ms4a4c membrane-spanning 4-domains, subfamily A, member 4C
1.3865493 Cep110 centrosomal protein 110
1.3862057 Tgtp2 T-cell specific GTPase 2
1.3854236 Ly6k lymphocyte antigen 6 complex, locus K
1.38537935
1.3849049 Cdr2l cerebellar degeneration-related protein 2-like
1.3841953 Padi3 peptidyl arginine deiminase, type III
1.3830595 Nrg4 neuregulin 4
1.38278484 Rasal1 RAS protein activator like 1 (GAP1 like)
1.382111 Acot7 acyl-CoA thioesterase 7
1.3813653 G6pc3 glucose 6 phosphatase, catalytic, 3
1.37783287 Scnt1 sodium channel and clathrin linker 1
1.37445496
1.3731833 Vapb vesicle-associated membrane protein, associated protein B and C
1.3726072 Atp9a ATPase, class II, type 9A
1.3714041 Rftn2 rftin family member 2
1.3685314 6330512M RIKEN cDNA 6330512M04 gene
1.36737585
1.3584584 Lap3 leucine aminopeptidase 3
1.3582575
1.3566028 Gar1 GARI ribonucleoprotein homolog (yeast)
1.3554721 Prdx6 peroxidoxin 6
1.35266404 Arhgap18 Rho GTPase activating protein 18
1.35212235 Uhrf1bp1 UHRF1 (ICBP90) binding protein 1
1.35154106 Serpinb9 serine (or cysteine) peptidase inhibitor, clade B, member 9
1.3511514
1.35080765 Cirl1 corepressor interacting with RBPJ, 1
1.3482361
1.3476706 Rpl2f ribosome production factor 2 homolog (S. cerevisiae)
1.3459368 Plekho1 pleckstrin homology domain containing, family O member 1
1.3448925 Nat9 N-acetyltransferase 9 (GCN5-related, putative)
1.34344577 C130036L RIKEN cDNA C130036L24 gene
1.3432331
1.3432218
1.34307812 Fbxw8 F-box and WD-40 domain protein 8
1.3430385 Tjp3 tight junction protein 3
1.3405552 Klrqa1 KLRQA motif containing 1
1.3391943 Camkv CaM kinase-like vesicle-associated
1.33728413
1.3347873 Nat10 N-acetyltransferase 10
1.33423474 Kmo kynurenine 3-monoxygenase (kynurenine 3-hydroxylase)
1.3339629 Ahcy12 S-adenosylhomocysteine hydrolase-like 2
1.33367443 Pgcpc plasma glutamate carboxypeptidase
1.333476056 Dkcl1 dyskeratosis congenita 1, dyskerin homolog (human)
1.3304334 Rsrcl1 arginine/serine-rich coiled-coil 1
1.3289366 Gorasp1 golgi reassembly stacking protein 1
1.3273888 BC026762 cDNA sequence BC026762
1.32725285
1.3258024 AF067061 cDNA sequence AF067061
1.325603 Snaib3 snail homolog 3 (Drosophila)
1.32549338 Fggy FGGY carbohydrate kinase domain containing
1.32339908 Bial2 brain-specific angiogenesis inhibitor 2
1.3219691 Tmed1 transmembrane emp24 domain containing 1
1.32067157 Tsr1 TSRI, 20S rRNA accumulation, homolog (yeast)
1.32042406 Rpp38 ribonuclease P/MRP 38 subunit (human)
1.3199453 9130401M RIKEN cDNA 9130401M01 gene
1.31913852 Apgat2 1-acylglycerol-3-phosphate O-acyltransferase 2 (lysophosphatidic acid)
1.31879238 Ahr1c12 aldo-keto reductase family 1, member C12
1.3177623 Dux2 dihydrodipicolinate synthase 2-like (SAMM1, S. cerevisiae)
1.315877 Mgst2 microsomal glutathione S-transferase 2
1.3131847 Rgrip1l Rgrip1-like
1.3125033 Cpn2 copine II
1.31174372
1.30670735 BC048403 cDNA sequence BC048403
1.30592628 Pipox pipecolic acid oxidase
1.3048682 1300010F RIKEN cDNA 1300010F03 gene
1.3033152
1.30252934 1700020L RIKEN cDNA 1700020L24 gene
1.299813715 Pus1 pseudouridine synthase 1
1.2976999 Smyd2 SET and MYND domain containing 2
1.29273514 Caskin2 CASK-interacting protein 2
1.2927113
1.2925536 C330013J RIKEN cDNA C330013J21 gene
1.2910104 Rpap2 RNA polymerase II associated protein 2
1.2890939 Pmel premelanosome protein
1.2875565 Nrkibie nuclear factor of kappa light polypeptide gene enhancer in B-cells 1
1.2839146
1.2798763 Manea mannosidase, endo-alpha
1.2781276 Mta3 metastasis associated 3
1.27632235 2410018L RIKEN cDNA 2410018L13 gene
1.2760453 Bpnt1 bisphosphate 3'-nucleotidase 1
1.27591277 Tbc1d5 TBC1 domain family, member 5
1.27154211
-1.94968034 Gm16525 predicted gene, 16525
-1.9478464 H2-Ab1 histocompatibility 2, class II antigen A, beta 1
-1.9413595 Mag3 membrane associated guanylate kinase, WW and PDZ domain containing 3
-1.9387379
-1.9369686
-1.93479824
-1.9333868 Ndr2 N-myc downstream regulated gene 2
-1.9294588
-1.92362883 4732423E RIKEN cDNA 4732423E21 gene
-1.9224519 E430022K RIKEN cDNA E430022K19 gene
-1.921463 H2-Ab1 histocompatibility 2, class II antigen A, beta 1
-1.9198465 a nonagouti
-1.91156732 Mag3 membrane associated guanylate kinase, WW and PDZ domain containing 3
-1.9084769 Snaib1 snail homolog 1 (Drosophila)
-1.90629532 Ctl2a2 cytotoxic T lymphocyte-associated protein 2 alpha
-1.9014216 F13a1 coagulation factor XIII, A1 subunit
-1.9005423 Spry1 sprouty homolog 1 (Drosophila)
-1.9000287 Tmem194c transmembrane protein 194B
-1.8962242 Lmo4 LIM domain only 4
-1.88979472
-1.8891044 Zufsp zinc finger with UFM1-specific peptidase domain
-1.8687926 A1594674 expressed sequence A1594674
-1.8685689
-1.8670235 A330050B RIKEN cDNA A330050B17 gene
-1.86343295
-1.859848 Itn2a integral membrane protein 2A
-1.8586447
-1.85736756 A430107P RIKEN cDNA A430107P09 gene
-1.8545017
-1.8499732
-1.84894181 Tpk1 thiamine pyrophosphokinase
-1.839096
-1.83560136 E130104P RIKEN cDNA E130104P22 gene
-1.8342252
-1.8307952
-1.8262291 Lrrc36 leucine rich repeat containing 36
-1.82303472 Rab32 RAB32, member RAS oncogene family
-1.8153333 Dpp7 dipeptidylpeptidase 7
-1.81007864
-1.8073774 Tmie transmembrane inner ear
-1.80309156
-1.8003946 Camp cathelicidin antimicrobial peptide
-1.79649828 Cd74 CD74 antigen (invariant polypeptide of major histocompatibility complex, class II antigen-associated)
-1.7933927 C4b complement component 4B (Chido blood group)
-1.7922702 Krt85 keratin 85
-1.7921446
-1.7828893 Ifi272a interferon, alpha-inducible protein 27 like 2A
-1.78257516 Scamp1 secretory carrier membrane protein 1
-1.78151514 0610039H RIKEN cDNA 0610039H22 gene
-1.779057 Chd7 chromodomain helicase DNA binding protein 7
-1.778650724 Xrra1 X-ray radiation resistance associated 1
-1.7767764 Epas1 endothelial PAS domain protein 1
-1.7762942 4833421G RIKEN cDNA 4833421G17 gene
-1.7760607 B230334L RIKEN cDNA B230334L07 gene
-1.76615383 Fn3k fructosamine 3 kinase
-1.7652779
-1.76336288
-1.76321637
-1.7622147
-1.7592240 Kcnip3 Kv channel interacting protein 3, calseinlin
-1.75196702 1600010M RIKEN cDNA 1600010M07 gene
-1.7518759
-1.7465839
-1.7405987
-1.73271556
-1.731189717 Gm3086 RuvB-like protein 1 pseudogene
-1.72988705
-1.7276057 D930030O RIKEN cDNA D930030O05 gene
-1.7261225
-1.7236653 Samhd1 SAM domain and HD domain, 1
-1.7225947 Camk4 calcium/calmodulin-dependent protein kinase IV
-1.7159973 Gnb4 guanine nucleotide binding protein (G protein), beta 4
-1.7124757 LOC55290 hypothetical LOC552902
-1.71172617 Exoc6b exocyst complex component 6B
-1.7059317 Sipal12 signal-induced proliferation-associated 1 like 2
-1.70170356 Araap2 ArfGAP with RhoGAP domain, ankyrin repeat and PH domain 2
-1.6911301 Lmo4 LIM domain only 4
-1.68992044 Glicci1 glucocorticoid induced transcript 1
-1.6895799 A130082M RIKEN cDNA A130082M07 gene
-1.68861506
-1.67858938
-1.6712303 Dip2a DIP2 disco-interacting protein 2 homolog A (Drosophila)
-1.67061231 Gimap4 GTPase, IMAP family member 4
-1.6681724
-1.6658643 LOC10050 hypothetical protein LOC100503257
-1.6656944 Aut2s autism susceptibility candidate 2
-1.6650882 Mapre2 microtubule-associated protein, RP/EB family, member 2
-1.6637936
-1.66321327 Capn2 calpain 2
-1.66201207 Camk4 calcium/calmodulin-dependent protein kinase IV
-1.6595745 Olf1077 olfactory receptor 1077, pseudogene 1
-1.6574393
-1.65402313 Plibd1 phospholipase B domain containing 1
-1.653307002
-1.6500477 Nsg2 neuron specific gene family member 2
-1.64839319 5330421C RIKEN cDNA 5330421C15 gene
-1.6475734 Glicci1 glucocorticoid induced transcript 1
-1.642837537
-1.6413898 Tsc22d1 TSC22 domain family, member 1
-1.6381707 Itgav integrin alpha V
-1.6353776 Arf5c ADP-ribosylation factor-like 5C
-1.63224265 D1Erd704DNA segment, Chr 1, ERATO Doi 704, expressed
-1.6295852 Cd83 CD83 antigen
-1.62848715
-1.62654594 2610019F RIKEN cDNA 2610019F03 gene
-1.6229477 Tucs1 tumor suppressor candidate 1
-1.61900092
-1.6135197 Gm10065 predicted gene 10065
-1.6042533 2610209C RIKEN cDNA 2610209C05 gene
-1.6024512
-1.60134974 1500009C RIKEN cDNA 1500009C09 gene
-1.59427595
-1.59322546 Serp2 stress-associated endoplasmic reticulum protein family member 2
-1.59260994
-1.5925388 F13a1 coagulation factor XIII, A1 subunit
-1.5922733 Skap1 src family associated phosphoprotein 1
-1.5915036 Ppnr per-pentamer repeat gene
-1.5887985 Zfp187 zinc finger protein 187
-1.58734515
-1.58728885
-1.5871091
-1.5867281
-1.5790014
-1.57885215 Arid4b AT rich interactive domain 4B (RBP1-like)
-1.5787335

1.269916 Il6ra interleukin 6 receptor, alpha
1.26946976
1.2690687
1.2685651
1.2683542
1.26690914 Glnm glomulin, FKBP associated protein
1.2651325 Pycd3 pyrin domain containing 3
1.2633243 Diras2 DIRAS family, GTP-binding RAS-like 2
1.26299193 Bcap29 B-cell receptor-associated protein 29
1.2620011 Krt10 keratin 10
1.2612524 BC052040 cDNA sequence BC052040
1.25920243 Gas2 growth arrest specific 2
1.25917962 6720463M.RIKEN cDNA 6720463M24 gene
1.25910138 Trim30a tripartite motif-containing 30A
1.2588377 Traf1 TNF receptor-associated factor 1
1.25826264 Ppp1r1b protein phosphatase 1, regulatory (inhibitor) subunit 1B
1.2579655 Gm11696 predicted gene 11696
1.2565222 Zfp661 zinc finger protein 661
1.2559127 Hmgm5 high-mobility group nucleosome binding domain 5
1.25509357 Ephx4 epoxide hydrolase 4
1.2548905
1.2537223
1.25208427
1.2520056 Ms4a4b membrane-spanning 4-domains, subfamily A, member 4B
1.2513018 Atad3a ATPase family, AAA domain containing 3A
1.2506323 Tet1 tet oncogene 1
1.2500181 2310047K.RIKEN cDNA 2310047K21 gene
1.2461853 Ifr8 interferon regulatory factor 8
1.24452116 Luzp1 leucine zipper protein 1
1.24419355
1.24331282 Gnl3 guanine nucleotide binding protein-like 3 (nucleolar)
1.2429795 Cd93 CD93 antigen
1.24196 Zowpwl zinc finger, CW type with PWWP domain 1
1.2410746
1.2400688 Tfrc transferrin receptor
1.23973 Msh2 mutS homolog 2 (E. coli)
1.2397284 Oxsm 3-oxoacyl-ACP synthase, mitochondrial
1.23702003 Ndufa4 NADH dehydrogenase (ubiquinone) 1 alpha subcomplex, assembly fa
1.235551 BC147527 cDNA sequence BC147527
1.23497673 Pycd3 pyrin domain containing 3
1.23243048 Tatdn3 TatD DNase domain containing 3
1.23229936 Fam111a family with sequence similarity 111, member A
1.2316766 Nsun3 NOL1/NOP2/Sun domain family member 3
1.23163747 1810029B.RIKEN cDNA 1810029B16 gene
1.2310791 Trnff10 tumor necrosis factor (ligand) superfamily, member 10
1.23044155 Nr2f6 nuclear receptor subfamily 2, group F, member 6
1.2304393 Gm8369 predicted gene 8369
1.2302466 Senp8 SUMO/sentrin specific peptidase 8
1.2289424
1.22785425 Cdc25 coiled-coil domain containing 25
1.2249833 Mdn1 midasin homolog (yeast)
1.22478346 Camk2a calcium/calmodulin-dependent protein kinase II alpha
1.2246751 Socs3 suppressor of cytokine signaling 3
1.2243085 Tmem79 transmembrane protein 79
1.2192531 Ppnh peptidyl prolyl isomerase H
1.2187233
1.218549 Kihl35 kelch-like 35 (Drosophila)
1.2185097 Smarcc1 SWI/SNF related, matrix associated, actin dependent regulator of cl
1.2153116 Mjdbp1a MYB binding protein (P160) 1a
1.215148 Tmem151 transmembrane protein 151B
1.21508737 Tlcc2 TLC domain containing 2
1.2142439 A130040M.RIKEN cDNA A130040M12 gene
1.2140941 2610029B.RIKEN cDNA 2610029B01 gene
1.2128188 Sgq2 spastic paraplegia 21 homolog (human)
1.20710801 Abhd14a abhydrolase domain containing 14A
1.2050796 Csp250 centrosomal protein 250
1.2048758 Hist1h2bc histone cluster 1, H2bc
1.20471905 Gm7967 predicted gene 7967
1.2043386
1.20297904 Adamt2 ADAMTS-like 2
1.2019205 Pyhin1 pyrin and HIN domain family, member 1
1.2007895 Mndal myeloid nuclear differentiation antigen like
1.1986385 Gm4944 predicted gene 4944
1.1985455 Notch3 Notch gene homolog 3 (Drosophila)
1.1977148 Spata6 spermatogenesis associated 6
1.19734526 Grasp GRP1 (general receptor for phosphoinositides 1)-associated scaffold
1.19383622 Bcl2l1 BCL2-like 11 (apoptosis facilitator)
1.1929835 Slc39a6 solute carrier family 39 (metal ion transporter), member 6
1.19253495
1.1922598
1.190371 Ikbip IKBKB interacting protein
1.1903672 F2r3 coagulation factor II (thrombin) receptor-like 3
1.1900144
1.189554 Chmp4b chromatin modifying protein 4B
1.189403 9830147E.RIKEN cDNA 9830147E19 gene
1.187958695 Gm12942 predicted gene 12942
1.1871767 Rpp40 ribonuclease P 40 subunit (human)
1.1868686 Znhit6 zinc finger, HIT type 6
1.185421
1.1840134 A130040M.RIKEN cDNA A130040M12 gene
1.18351696 Lamb3 laminin, beta 3
1.1827898 Papsa2 3'-phosphoadenosine 5'-phosphosulfate synthase 2
1.1794591 Gm7894 predicted gene 7894
1.1764078 1700102H.RIKEN cDNA 1700102H20 gene
1.1762776
1.1761723 Card10 caspase recruitment domain family, member 10
1.1759987 Isoc2b isochorismatase domain containing 2b
1.1759037
1.1709829
1.170836 Tsr1 TSRI, 20S rRNA accumulation, homolog (yeast)
1.16980269 Eci1 enoyl-Coenzyme A delta isomerase 1
1.16968153 Zwlch Zwlch, kinetochore associated, homolog (Drosophila)
1.16951843 Clec2d C-type lectin domain family 2, member d
1.169076 Lphh LLP homolog, long-term synaptic facilitation (Aplysia)
1.16884754 Prss36 protease, serine, 36
1.1688175 Mthfd1f methylenetetrahydrofolate dehydrogenase (NADP+ dependent), met
1.1687756 LOC10050 envelope glycoprotein-like
1.168066
1.16801553 Aldh1b1 aldehyde dehydrogenase 1 family, member B1
1.1674905 Mettl1 methyltransferase like 1
1.1672554 Gcsh glycine cleavage system protein H (aminomethyl carrier)
1.166027 Hrip3 HIRA interacting protein 3
1.164805386 Mmachc methylmalonic aciduria cblC type, with homocystinuria
1.163973355 Ankrd24 ankyrin repeat domain 24
1.1628738 Zfp71-rs1 zinc finger protein 71, related sequence
1.16225435
1.1616592 Zfp420 zinc finger protein 420
1.16142273 Gm10762 predicted gene 10762
1.1612573 Tox4 TOX high mobility group box family member 4
1.1602406 Mettl13 methyltransferase like 13
1.15883014 Zfp458 zinc finger protein 458
1.157356308 Xaf1 XIAP associated factor 1
1.15695522 N6amt1 N-6 adenine-specific DNA methyltransferase 1 (putative)
1.15568738 Snapin SNAP-associated protein
1.1552677 Ikbkap inhibitor of kappa light polypeptide enhancer in B-cells, kinase com
-1.57630207 5033411D.RIKEN cDNA 5033411D12 gene
-1.5744848 Smox spermine oxidase
-1.57183556
-1.57122894 Rtn2 reticulon 2 (Z-band associated protein)
-1.5664246
-1.5650063 Cited1 Cbp/p300-interacting transactivator with Glu/Asp-rich carboxy-terminal domain 1
-1.5648222 Gdf7 growth differentiation factor 7
-1.5644737
-1.55520153
-1.5500498 4930486L.RIKEN cDNA 4930486L24 gene
-1.54501916 Krt18 keratin 18
-1.5437493 Atp2b1 ATPase, Ca++ transporting, plasma membrane 1
-1.5434222 Lipt1 lipoyltransferase 1
-1.54322096 LOC10050 protein HSN2-like
-1.5414586 Pcsk1 proprotein convertase subtilisin/kexin type 1
-1.54103995
-1.5399454
-1.5392084 Rhase13 ribonuclease, RNase A family, 13 (non-active)
-1.5350823
-1.5350046
-1.53454354
-1.5337129 Ext1 exostosin (multiple) 1
-1.5332451
-1.531979 Glccl1 glucocorticoid induced transcript 1
-1.53151274 Dclk2 doublecortin-like kinase 2
-1.52276423
-1.5218422
-1.5161992 Gabbr1 gamma-aminobutyric acid (GABA) B receptor, 1
-1.51600457
-1.5153345 Nr4a2 nuclear receptor subfamily 4, group A, member 2
-1.51480719
-1.5142712 Bcl3 B-cell leukemia/lymphoma 3
-1.5141015 Ica1 iAlet cell autoantigen 1
-1.51367995 58304100R.RIKEN cDNA 5830410009 gene
-1.51210312 Camp cathelicidin antimicrobial peptide
-1.5099114 Mfap2 microfibrillar-associated protein 2
-1.5088559 Gnb5 guanine nucleotide binding protein (G protein), beta 5
-1.5085583 Gstk1 glutathione S-transferase kappa 1
-1.5075473 C030037D.RIKEN cDNA C030037D09 gene
-1.5075102 ENSMUSG predicted gene, ENSMUSG0000068790
-1.50738423
-1.50548747 Chka choline kinase alpha
-1.50428537
-1.5039735 LOC55309 hypothetical LOC553096
-1.50255156
-1.5022797 Acvr1 activin A receptor, type 1
-1.49984835 St3gal2 ST3 beta-galactoside alpha-2,3-sialyltransferase 2
-1.49736355 H1fx H1 histone family, member X
-1.4965453
-1.49259472 4931406E.RIKEN cDNA 4931406E20 gene
-1.4916777 Wnt8b wingless related MMTV integration site 8b
-1.48723598
-1.4848367 BB166591 expressed sequence BB166591
-1.48258935 Tmem176 transmembrane protein 176A
-1.4804301 B930042K.RIKEN cDNA B930042K01 gene
-1.479402 Rnf103 ring finger protein 103
-1.47836207 5830419E.RIKEN cDNA 5830419E12 gene
-1.4772366 C230085N.RIKEN cDNA C230085N15 gene
-1.4767556 Stribt2 Scm-like with four mbt domains 2
-1.4720974
-1.4702191 Serpin3g serine (or cysteine) peptidase inhibitor, clade A, member 3G
-1.4696407
-1.46939374 Slc6a19 solute carrier family 6 (neurotransmitter transporter), member 19
-1.4676132 Tmem176 transmembrane protein 176B
-1.4665063
-1.46619033 A130072N.RIKEN cDNA A130072N09 gene
-1.46524672 Sepep1 serine carboxypeptidase 1
-1.4629498
-1.4612064 LOC54500 hypothetical protein LOC545005
-1.45962813 Acvr1l1 activin A receptor, type II-like 1
-1.45917414 Arap2 ArfGAP with RhoGAP domain, ankyrin repeat and PH domain 2
-1.4580507
-1.4547193 Lgals1 lectin, galactose binding, soluble 1
-1.45261617 Morf42 mortality factor 4 like 2
-1.4514819 Ccr7 chemokine (C-C motif) receptor 7
-1.4484978 Il6ra interleukin 4 receptor, alpha
-1.44596246
-1.4457236 Pds3 pleckstrin and Sec7 domain containing 3
-1.4444404 Map4k3 mitogen-activated protein kinase kinase kinase 3
-1.4382133
-1.436924
-1.4362726 Slc30a4 solute carrier family 30 (zinc transporter), member 4
-1.4362053 D13Ert60DNA segment, Chr 13, ERATO Doi 608, expressed
-1.434786
-1.4333963 Trav3n-3 T cell receptor alpha variable 3N-3
-1.4311542
-1.427867
-1.42738726 Kctd17 potassium channel tetramerisation domain containing 17
-1.42407318 Afap1 actin filament associated protein 1
-1.4214187 Lass4 LAG1 homolog, ceramide synthase 4
-1.4187322 9330161L.RIKEN cDNA 9330161L09 gene
-1.41750813
-1.41700218
-1.4158782 Tbc1d2 TBC1 domain family, member 2
-1.41581156
-1.4158058
-1.4156713
-1.4155091
-1.4141369 Zbtb39 zinc finger and BTB domain containing 39
-1.4130993 Gm5797 predicted gene 5797
-1.41287609 Il4il1 interleukin 4 induced 1
-1.40732433
-1.4071393 Zfp945 zinc finger protein 945
-1.40235995
-1.402248985
-1.401881224
-1.4005933 Tiparp TODD-inducible poly(ADP-ribose) polymerase
-1.3979883 Slc25a37 solute carrier family 25, member 37
-1.39549064 Pdim5 PDZ and LIM domain 5
-1.39344406 Tiparp TODD-inducible poly(ADP-ribose) polymerase
-1.38936756 Gm5478 predicted pseudogene 5478
-1.38778638 LOC10050 hypothetical protein LOC100505348
-1.3868756 Bex2 brain expressed X-linked 2
-1.3864679 Phc1 polyhomeotic-like 1 (Drosophila)
-1.38642826 Cd7 CD7 antigen
-1.3851347 S100a9 S100 calcium binding protein A9 (calgranulin B)
-1.384604 Dendnlb DENN/MADD domain containing 1B
-1.3843504 Lgals4 lectin, galactose binding, soluble 4
-1.3836976 B930049P.RIKEN cDNA B930049P21 gene
-1.38343664
-1.38067 Raph1 Ras association (RalGDS/AF-6) and pleckstrin homology domains 1
-1.3779515 Tmsb10 thymosin, beta 10
-1.3752384 Pik3r3 phosphatidylinositol 3 kinase, regulatory subunit, polypeptide 3 (p55)
-1.3706169
-1.3702592 28104422.RIKEN cDNA 281044221 gene

1.1551164 Nrp1 neurophilin 1
1.15331555 Scm4a sex comb on midleg-like 4 (Drosophila)
1.149367814 Tadsn3 TatD DNase domain containing 3
1.1492462 Slc39a11 solute carrier family 39 (metal ion transporter), member 11
1.1492435 Serf1 small EDRK-rich factor 1
1.1476788 Hvcn1 hydrogen voltage-gated channel 1
1.1473817 Tmco4 transmembrane and coiled-coil domains 4
1.1455135 Zfp239 zinc finger protein 239
1.1440849 Zfp960 zinc finger protein 960
1.14345833 Gin1 gypsy retrotransposon integrase 1
1.1428833 Syng4 synaptogyrin 4
1.14163547 9530077C/RIKEN cDNA 9530077C05 gene
1.140858 843040680/RIKEN cDNA 8430406807 gene
1.13923217 Ttc16 tetratricopeptide repeat domain 16
1.1373996 Zmat1 zinc finger, matrix type 1
1.13736196 Klrac1 KLRAG motif containing 1
1.13695817 E130012A/RIKEN cDNA E130012A19 gene
1.1364436 BC021614 cDNA sequence BC021614
1.1359124 5830468F/RIKEN cDNA 5830468F06 gene
1.1347322 Atcyl2 S-adenosylhomocysteine hydrolase-like 2
1.1338315 Tlc7 tetratricopeptide repeat domain 7
1.132910265 Tasp1 taspase, threonine aspartase 1
1.1328554 Tlc02 TLC domain containing 2
1.1312838 Rtp44 integrin alpha 4
1.13079073 A130010J/RIKEN cDNA A130010J15 gene
1.1307168
1.1303902 Pop1 processing of precursor 1, ribonuclease P/MRP family, (S. cerevisiae)
1.1301518 Smad3 MAD homolog 3 (Drosophila)
1.1289052 Fus fusion, derived from t(12;12) malignant liposarcoma (human)
1.1286545 Wd44 WD repeat domain 4
1.12814288 Bkl BCL2-interacting killer
1.1273913 Pcx pyruvate carboxylase
1.1256799 Rab37 RAB37, member of RAS oncogene family
1.1245051 57304550/RIKEN cDNA 5730455013 gene
1.12435244 Trim37 tripartite motif-containing 37
1.1226764 Cabyr calcium-binding tyrosine-(Y)-phosphorylation regulated (fibrous sheet)
1.1208743 Rsl1d1 ribosomal L1 domain containing 1
1.12034464 Asap1 ArfGAP with SH3 domain, enkyrin repeat and PH domain 1
1.11804584 Nlgn2 neuroligin 2
1.1178102 Gcsh glycine cleavage system protein H (aminomethyl carrier)
1.1160002 483142611/RIKEN cDNA 4831426119 gene
1.1156334
1.1137019 Xrcc5 X-ray repair complementing defective repair in Chinese hamster cell
1.11328743 1300010F/RIKEN cDNA 1300010F03 gene
1.1101466 Ddx27 DEAD (Asp-Glu-Ala-Asp) box polypeptide 27
1.1092814 B2m beta-2 microglobulin
1.1076598 2010204K/RIKEN cDNA 2010204K13 gene
1.10662696 Lair1 leukocyte-associated Ig-like receptor 1
1.1061096
1.1055251 Ppid peptidylprolyl isomerase D (cyclophilin D)
1.1054025 Homer1 homer homolog 1 (Drosophila)
1.1046338
1.10449362 Rbm34 RNA binding motif protein 34
1.10256104
1.102313 Tle1 transducin-like enhancer of split 1, homolog of Drosophila E(spl)
1.1022973 N4bp211 NEDD4 binding protein 2-like 1
1.10196017 2010300C/RIKEN cDNA 2010300C02 gene
1.10115906
1.1011508 Gas glucosidase, alpha, acid
1.09979728 Cart glucoylserine/bovylglycinamide formyltransferase
1.0993142 Zfp40 zinc finger protein 40
1.0983543 Acc3f acyl-CoA synthetase family member 3
1.0968654 Ppp2r1b protein phosphatase 2 (formerly 2A), regulatory subunit A (PR 65), I
1.0965071 Gm8992 predicted gene 9892
1.09619715 Kih5 kelch-like 5 (Drosophila)
1.0958955 Exosc1 exosome component 1
1.0955935 Ikbip IKKB interacting protein
1.0952196 Ctage5 CTAGE family, member 5
1.0934876 Socs5 suppressor of cytokine signaling 5
1.09338423 Ms4a4b membrane-spanning 4-domains, subfamily A, member 4B
1.0929327 Wnt5b wingless-related MMTV integration site 5B
1.0928959 Slc25a20 solute carrier family 25 (mitochondrial carnitine/acylcarnitine transp
1.09241676 Gpatch1 G patch domain containing 1
1.09239104 9530077C/RIKEN cDNA 9530077C05 gene
1.0923461 Scrn2 secernin 2
1.0918007 Ng23 Ng23 protein
1.09073352
1.0902739 Elovl6 ELOVL family member 6, elongation of long chain fatty acids (yeast)
1.0895567 1110051M/RIKEN cDNA 1110051M20 gene
1.08945126 Trmt61a tRNA methyltransferase 61 homolog A (S. cerevisiae)
1.088707 Nipsnap1 4-nitrophenylphosphatase domain and non-neuronal SNAP25-like p
1.08831215 Rnf165 ring finger protein 165
1.0878343 Lrrc32 leucine rich repeat containing 32
1.08766 Tubb2b tubulin, beta 2B
1.0871248 Otud0b OTU domain containing 6B
1.08671668 Conh cyclin H
1.0861091 Lgals9 lectin, galactose binding, soluble 9
1.08584547 Mlec malectin
1.0858126
1.08560944 Actn1 actinin, alpha 1
1.084939 Deacr1 2,4-dienoyl CoA reductase 1, mitochondrial
1.0842829 Shmt2 serine hydroxymethyltransferase 2 (mitochondrial)
1.0835619 Cgrrf1 cell growth regulator with ring finger domain 1
1.08327052 Glis2 GLIS family zinc finger 2
1.0826893 Nop58 NOP58 ribucleoprotein homolog (yeast)
1.0822024 Lpar4 lysophosphatidic acid receptor 4
1.08193028 Pkca protein kinase C, alpha
1.08151577 Fgr dihydrodipyrone synthase 4-like (S. cerevisiae)
1.0801787 Gardner-Rasheed feline sarcoma viral (Fgr) oncogene homolog
1.0801796 Shoc2 soc-2 (suppressor of clear) homolog (C. elegans)
1.0797544 Gm15760 mitochondrial ribosomal protein S18B pseudogene
1.07928417
1.0787707 Akna AT-hook transcription factor
1.0776138
1.0763254 Cdc32 coiled-coil domain containing 32
1.075665
1.0745831 11900070/RIKEN cDNA 1190007007 gene
1.0735824 Psmg1 proteasome (prosome, macropain) assembly chaperone 1
1.0725174 Gnpda2 glucosamine-6-phosphate deaminase 2
1.0723872 Abcb8 ATP-binding cassette, sub-family B (MDR/TAP), member 8
1.0721578 Haus3 HAUS augmin-like complex, subunit 3
1.0712747 LOC10050 hypothetical LOC100504219
1.070508 Sms spermine synthase
1.06935738 Trim30d tripartite motif-containing 30D
1.0690738 Gm5801 ubiquitin-conjugating enzyme E2, J2 homolog pseudogene
1.06892303 Pyhin1 pyrin and HIN domain family, member 1
1.0687199
1.0685474 BC023969 cDNA sequence BC023969
1.0682168 Zfp11 zinc finger protein 11
1.066802
1.0658216 Rars2 arginyl-tRNA synthetase 2, mitochondrial
1.06572196 Nr1h3 nuclear receptor subfamily 1, group H, member 3
1.06303886 Ide insulin degrading enzyme
1.06261164 Taf15 TAF15 RNA polymerase II, TATA box binding protein (TBP)-associa

-1.366216222 S100a8 S100 calcium binding protein A8 (calgranulin A)
-1.3659849 Frrs1 ferric-chelate reductase 1
-1.36504554 C130068B/RIKEN cDNA C130068B02 gene
-1.36289
-1.3624287
-1.3622995
-1.3611128 4931429P/RIKEN cDNA 4931429P17 gene
-1.360506 Svll supervillin
-1.3588418
-1.35861018
-1.35851827 H2-T9 histocompatibility 2, T region locus 9
-1.35635237 Otud1 OTU domain containing 1
-1.35202694
-1.35096264
-1.35062983 Adams14 a disintegrin-like and metallopeptidase (reprolysin type) with thrombospondin type 1 motif, 14
-1.3491006
-1.34783364 Cdkn1c cyclin-dependent kinase inhibitor 1C (P57)
-1.3471916 Rasgrp1 RAS guanyl releasing protein 1
-1.345964
-1.3451981
-1.3412108
-1.3410787
-1.3407255
-1.3403516
-1.33854817 Tmem132/transmembrane protein 132A
-1.33624128
-1.33466674
-1.3342389 Slc6a13 solute carrier family 6 (neurotransmitter transporter, GABA), member 13
-1.33331253
-1.33313896 Ikarf2 IKAROS family zinc finger 2
-1.33251382
-1.3322925 2610019F/RIKEN cDNA 2610019F03 gene
-1.3295498
-1.3289231 Gm10325 predicted gene 10325
-1.3287048
-1.3283706
-1.3268634 Vopp1 vesicular, overexpressed in cancer, pro-survival protein 1
-1.32426403
-1.32274958 C1300262/RIKEN cDNA C130026212 gene
-1.3216704 2300003K/RIKEN cDNA 2300003K06 gene
-1.3214045
-1.32133434
-1.3198497 Gsn gelsolin
-1.319262 Rasgrp4 RAS guanyl releasing protein 4
-1.3190365 Herc3 hect domain and RLD 3
-1.3187651 4921511C/RIKEN cDNA 4921511C10 gene
-1.3187461
-1.3175085 Tmsb10 thymosin, beta 10
-1.3171147 Mapre3 microtubule-associated protein, RP/EB family, member 3
-1.316957 Dnahc8 dynein, axonemal, heavy chain 8
-1.31532 LOC66563 hypothetical protein LOC665635
-1.31452178
-1.3114448 Gm11564 predicted gene 11564
-1.3114147 Xpr1 xenotropic and polytropic retrovirus receptor 1
-1.311062 Suv420h1 suppressor of variegation 4-20 homolog 1 (Drosophila)
-1.310009
-1.3089733 9530029O/RIKEN cDNA 9530029O12 gene
-1.3081632 Dupsp14 dual specificity phosphatase 14
-1.3074103 Fas Fas (TNF receptor superfamily member 6)
-1.30723 2510009C/RIKEN cDNA 2510009C07 gene
-1.30670032 Ical11 islet cell autoantigen 1-like
-1.304792 1700049M/RIKEN cDNA 1700049M11 gene
-1.3047198 Med28 mediator of RNA polymerase II transcription, subunit 28 homolog (yeast)
-1.3036257 C80012 expressed sequence C80012
-1.3002619
-1.29980042
-1.29745672
-1.29674865
-1.2947669
-1.2927676 Pldc2 plexin domain containing 2
-1.2902604 Mhas1 malignant fibrous histiocytoma amplified sequence 1
-1.28991985 Runds3c RUN domain containing 3B
-1.2897033
-1.2885485
-1.288512688
-1.2881847
-1.28805545
-1.2857714
-1.28553867
-1.28413056
-1.2837745 Cntm5 CKLF-like MARVEL transmembrane domain containing 5
-1.28114844
-1.2811308
-1.27786592 C130051F/RIKEN cDNA C130051F05 gene
-1.27735468 Tmem88 transmembrane protein 88
-1.2768087 9430024F/RIKEN cDNA 9430024F10 gene
-1.2765937
-1.2753839 Tbc1d16 TBC1 domain family, member 16
-1.27423236 Adam15 a disintegrin and metallopeptidase domain 15 (metagidin)
-1.2741647 Mycn v-myc myelocytomatosis viral related oncogene, neuroblastoma derived (avian)
-1.2732721
-1.27303414 Dab2ip disabled homolog 2 (Drosophila) interacting protein
-1.2718544
-1.2715263
-1.27127363 Ddx25 DEAD (Asp-Glu-Ala-Asp) box polypeptide 25
-1.27013776 Hspn3 hyaluronan and proteoglycan link protein 3
-1.2704544 Carf calcium response factor
-1.2691303 Vps37d vacuolar protein sorting 37D (yeast)
-1.2683192 Atmnl1 attractin like 1
-1.2681179 Inadl1 Inad-like (Drosophila)
-1.26785443 Ndrg1 N-myc downstream regulated gene 1
-1.2675162
-1.2672749 A130071D/RIKEN cDNA A130071D04 gene
-1.2664933
-1.2663164
-1.2656579 B230334C/RIKEN cDNA B230334C09 gene
-1.26497741 Tbx22 T-box 22
-1.2648473 Olf1500 olfactory receptor 1500
-1.2638454 Slc4a7 solute carrier family 4, sodium bicarbonate cotransporter, member 7
-1.2633676 Kcnq1ct1 KCNQ1 overlapping transcript 1
-1.2624244
-1.2618261 2210403K/RIKEN cDNA 2210403K04 gene
-1.2608972
-1.26067016 Id1 inhibitor of DNA binding 1
-1.2600885
-1.2591663 Zfp366 zinc finger protein 366
-1.2562833 4932439E/RIKEN cDNA 4932439E07 gene
-1.25581595
-1.25567245
-1.255305778
-1.2518429 Tet2 tet oncogene family member 2
-1.25167466 Rfx3 regulatory factor X, 3 (influences HLA class II expression)
-1.251585 E030042N/RIKEN cDNA E030042N06 gene
-1.2508523
-1.2487986

1.06233167 4931406C/RIKEN cDNA 4931406C07 gene
1.0618067 EglN3 EGL nine homolog 3 (C. elegans)
1.06178856 Pcdc6ip programmed cell death 6 interacting protein
1.06175042 BC017612 cDNA sequence BC017612
1.06129027
1.0602784 EGG688643 predicted gene, EGG688643
1.0588064
1.0583782
1.05642892 Jak3 Janus kinase 3
1.0553831 Dph5 DPH5 homolog (S. cerevisiae)
1.0551939 Guf1 GUF1 GTPase homolog (S. cerevisiae)
1.055096
1.0546787 Ncl nucleolin
1.054202 Lztf11 leucine zipper transcription factor-like 1
1.05394696 Ccdc30 coiled-coil domain containing 30
1.0538006 Rab37 RAB37, member of RAS oncogene family
1.053194 181006Z0 RIKEN cDNA 181006Z018 gene
1.0527792 Herc6 hect domain and RLD 6
1.05259127 Gcct gamma-glutamyl cyclotransferase
1.0522331 Gm10751 predicted gene 10751
1.05162714 Jnk1 interleukin-1 receptor-associated kinase 1
1.0515275 Tlc32 tetratricopeptide repeat domain 32
1.05114413 Cag7 component of oligomeric golgi complex 7
1.050636 633057E/RIKEN cDNA 633057E15 gene
1.0499101 Rbp1 ribosome binding protein 1
1.04926493 Pon3 paraoxonase 3
1.04898978 Hfoa histocompatibility 60a
1.0484973 Ddx21 DEAD (Asp-Glu-Ala-Asp) box polypeptide 21
1.0481806 Emp1 epithelial membrane protein 1
1.04719733 Mett22 methyltransferase like 22
1.0462517
1.045688 Cutc cutC copper transporter homolog (E.coli)
1.04389047 111000Z0/RIKEN cDNA 111000Z022 gene
1.04339977 Ppib peptidyl prolyl isomerase H
1.0425768 Nup12 nucleoporin like 2
1.041853 Hnmpu heterogeneous nuclear ribonucleoprotein U
1.0414308
1.0407319 Gin1 gypsy retrotransposon integrase 1
1.04016785 Tlc35 tetratricopeptide repeat domain 35
1.0396256
1.0384912 Tpr translocated promoter region
1.0383634 Gm12592 predicted gene 12592
1.0376782
1.03545853 Agrn agrin
1.03531077 Efcab2 EF-hand calcium binding domain 2
1.03497266 6330418K/RIKEN cDNA 6330418K02 gene
1.0348682 2010300C/RIKEN cDNA 2010300C02 gene
1.0342737
1.033305 Cenpk centromere protein K
1.0324461 Alg6 asparagine-linked glycosylation 6 homolog (yeast, alpha-1,3-galucosyl)
1.0324416 Fgfbp3 fibroblast growth factor binding protein 3
1.0323724 G6pc3 glucose 6 phosphatase, catalytic, 3
1.03213023
1.0317692
1.03160763
1.03139065 Mthfr 5,10-methylenetetrahydrofolate reductase
1.0312314 Cdk5rap2 CDK5 regulatory subunit associated protein 2
1.0306816 Cnptg N-acetylglucosamine-1-phosphotransferase, gamma subunit
1.02783845 Fam35a family with sequence similarity 35, member A
1.02709004 Card9 caspase recruitment domain family, member 9
1.0268001 Nam1 nucleophosmin 1
1.0266619 Dhx34 DEAH (Asp-Glu-Ala-His) box polypeptide 34
1.0263929 Gm6211 predicted gene 6211
1.0263663 Nuds nuclear distribution gene O homolog (Aspergillus)
1.0253868 Bre brain and reproductive organ-expressed protein
1.0253294
1.0250597 Fgfr10p Fgfr1 oncogene partner
1.0240274 Timm9 translocase of inner mitochondrial membrane 9 homolog (yeast)
1.02379802 Jacc IQ motif containing C
1.0233735 Muted mutated
1.023202
1.0225687 Mrm1 mitochondrial rRNA methyltransferase 1 homolog (S. cerevisiae)
1.02231694 Gm12250 predicted gene 12250
1.02199125 Trmt6 tRNA methyltransferase 6 homolog (S. cerevisiae)
1.0215721 Zpbp2 zona pellucida binding protein 2
1.02143 Kataln1 katanin p80 subunit A-like 1
1.02138003 Rbcbt2 regulator of chromosome condensation (RCC1) and BTB (POZ) dor
1.0213385 Ppid peptidylprolyl isomerase D (cyclophilin D)
1.0210647 Eif2a2 eukaryotic translation initiation factor 2, subunit 2 (beta)
1.021054248 RetSAT retinol saturase (all trans retinol 13,14 reductase)
1.02006722 2700023E/RIKEN cDNA 2700023E23 gene
1.0194131 Xylb xylokinase homolog (H. influenzae)
1.0189132 Tagln2 transgelin 2
1.01879743
1.017724
1.0175095 Mzf1 myeloid zinc finger 1
1.0172748 Dtd1 D-tyrosyl-tRNA deacylase 1 homolog (S. cerevisiae)
1.01704744 Gm10638 predicted gene 10638
1.01704357 Shmt1 serine hydroxymethyltransferase 1 (soluble)
1.01676417 Ulbp1 UL16 binding protein 1
1.01649616 Wdr70 WD repeat domain 70
1.016349373 Zrsr1 zinc finger (CCHC type), RNA binding motif and serine/arginine rich
1.0162763 Gale galactose-4-epimerase, UDP
1.015955 Prrm3 protein arginine N-methyltransferase 3
1.0141172
1.0136995 Hvcn1 hydrogen voltage-gated channel 1
1.0127311
1.0125933 Sfxn1 sideroflexin I
1.01234197
1.0123287 1810014B/RIKEN cDNA 1810014B01 gene
1.0120263
1.0119162 Gorr1 golgi SNAP receptor complex member 1
1.0115509 Hsp44 heat shock protein 44
1.0114675 Rrs1 RRS1 ribosome biogenesis regulator homolog (S. cerevisiae)
1.0107793 Mifl1p myeloid leukemia factor 1 interacting protein
1.00981095 As3mt arsenic (+3 oxidation state) methyltransferase
1.00761746
1.0068841 Mett115 methyltransferase like 15
1.006223676 Zfp59 zinc finger protein 59
1.00599293 Kbtbd11 kelch repeat and BTB (POZ) domain containing 11
1.0058004 Atp1a1 ATPase, Na⁺/K⁺ transporting, alpha 1 polypeptide
1.004181 Def8 differentially expressed in FDOP 8
1.004135608 Ampd1 adenosine monophosphate deaminase 1
1.002897764 Orf1 oral-facial-digital syndrome 1 gene homolog (human)
1.0024357
1.0015621 Pno1 partner of NOB1 homolog (S. cerevisiae)
1.001118684 Rab15 RAB, member of RAS oncogene family-like 5
1.0008346 Hnmpd heterogeneous nuclear ribonucleoprotein D
1.0006607 P2ry10 purinergic receptor P2Y, G-protein coupled 10
1.0005928
1.0003018 Senp8 SUMO/sentrin specific peptidase 8
-1.247098
-1.2470079
-1.24677177 Zfp187 zinc finger protein 187
-1.24626686 Dopey2 dopey family member 2
-1.24472852 Tacc2 transforming, acidic coiled-coil containing protein 2
-1.242780245
-1.2400422 Pou5f2 POU domain class 5, transcription factor 2
-1.2384858 Ikrf2 IKAROS family zinc finger 2
-1.23808287
-1.2378917
-1.23770665 Map3k14 mitogen-activated protein kinase kinase kinase 14
-1.2363901
-1.2357798
-1.2356377 LOC10050hypothetical LOC100505352
-1.235344 Crygc crystallin, gamma C
-1.2344751 Mdf1 MyoD family inhibitor
-1.2336999 Wdfy2 WD repeat and FYVE domain containing 2
-1.2330918 Cdc7 cell division cycle 7 (S. cerevisiae)
-1.23189118 D6Ert0131 DNA segment, Chr 6, ERATO Doi 131, expressed
-1.23149347
-1.2312714 Sec16a SEC16 homolog A (S. cerevisiae)
-1.2300205
-1.227972 Fam84b family with sequence similarity 84, member B
-1.2273899 Leprel2 leprecan-like 2
-1.22362 Nnt nicotinamide nucleotide transhydrogenase
-1.22180127 Stom stomatin
-1.2212368
-1.2195964 A4300610 RIKEN cDNA A430061012 gene
-1.2184925
-1.21745876 Lrrc8a leucine rich repeat containing 8A
-1.21637012
-1.21378851 Cd209d CD209d antigen
-1.2135243 Fbxo30 F-box protein 30
-1.21231173
-1.21094324 Tuf1 tufelin 1
-1.21068
-1.2102499 Rffl ring finger and FYVE like domain containing protein
-1.2095828 Nrk3 neurotrophic tyrosine kinase, receptor, type 3
-1.2094746 Gpx2 glutathione peroxidase 2
-1.2084818 Fam102b family with sequence similarity 102, member B
-1.20595785 A930003A RIKEN cDNA A930003A15 gene
-1.2058201 Eph1 epoxide hydrolase 1, microsomal
-1.20421695 Prkca protein kinase C, theta
-1.20387885
-1.203484
-1.2034105
-1.2033471 Pik3p1 phosphoinositide-3-kinase interacting protein 1
-1.2027821
-1.202559
-1.2024517 Arp32a acidic (leucine-rich) nuclear phosphoprotein 32 family, member A
-1.2020707
-1.20151185 5730526G RIKEN cDNA 5730526G10 gene
-1.2014676
-1.20117423 1110035E/RIKEN cDNA 1110035E04 gene
-1.198441
-1.1983221 Sybu syntabulin (syntaxin-interacting)
-1.1982904 Mbef1 macrophage expressed gene 1
-1.1966565
-1.19601863 Myet4 MYST histone acetyltransferase monocytic leukemia 4
-1.1957774 Mapk8 mitogen-activated protein kinase 8
-1.19407223 Fripb1 formin binding protein 1-like
-1.1932443
-1.1932411
-1.19272374 Gm2724 predicted gene 2724
-1.1911502
-1.1907553
-1.18974878 Dos downstream of Stk11
-1.18880413
-1.188279 Shark1 SH3/ ankyrin domain gene 1
-1.187114
-1.1869814 D830025C RIKEN cDNA D830025C05 gene
-1.1860583
-1.1858187
-1.18539815 9930024M RIKEN cDNA 9930024M15 gene
-1.1850953 9030419F/RIKEN cDNA 9030419F21 gene
-1.1849406
-1.184209999 Sik2 salt inducible kinase 2
-1.1841841 St6galactST6 (alpha-N-acetyl-neuraminyl-2,3-beta-galactosyl-1,3)-N-acetylgalactosaminide alpha-2,6-sialyltransferase 6
-1.1836162 Phc2 polyhomeotic-like 2 (Drosophila)
-1.1825766 CebpD CCAAT/enhancer binding protein (C/EBP), delta
-1.1821112 Fhl5 four and a half LIM domains 5
-1.180942495 Amn1 antagonist of mitotic exit network 1 homolog (S. cerevisiae)
-1.180903 Snx9 sorting nexin 9
-1.1795387 Tardbp TAR DNA binding protein
-1.1795053
-1.1776237 D2Ert640 DNA segment, Chr 2, ERATO Doi 640, expressed
-1.1771159
-1.1766791
-1.175294 Gsn gelsolin
-1.17528437 Rbms1 RNA binding motif, single stranded interacting protein 1
-1.1738881 Unc5c1 unc-5 homolog C (C. elegans)-like
-1.172765259
-1.172122 Gcat glycine C-acetyltransferase (2-amino-3-ketobutyrate-coenzyme A ligase)
-1.1710625 Homer1 homer homolog 1 (Drosophila)
-1.170640962 Podxl2 podocalyxin-like 2
-1.16994329
-1.16905976
-1.16765265
-1.16752722
-1.1673766 463242E/RIKEN cDNA 463242E13 gene
-1.16618681 Slc5a3 solute carrier family 5 (inositol transporters), member 3
-1.16572567 Gm10759 predicted gene 10759
-1.16397 E330013P/RIKEN cDNA E330013P08 gene
-1.1630354
-1.1624527
-1.1622648 Xpr1 xenotropic and polytropic retrovirus receptor 1
-1.1619816
-1.161854254
-1.16111943 Rnd1 Rho family GTPase 1
-1.16045712 2410089E/RIKEN cDNA 2410089E03 gene
-1.1581602 4930478L/RIKEN cDNA 4930478L05 gene
-1.15707541 Clnr3 calypterin 3
-1.15684414 Gpr146 G protein-coupled receptor 146
-1.1568288 Snx29 sorting nexin 29
-1.15555096 Smox spermine oxidase
-1.1555428
-1.1554698
-1.15413763
-1.1535478
-1.1535143
-1.152442 Pde7a phosphodiesterase 7A
-1.152438143
-1.1516581 2410087M/RIKEN cDNA 2410087M07 gene
-1.15122943 Ptpns protein tyrosine phosphatase, receptor type, S
-1.1510844 Tle4 transducin-like enhancer of split 4, homolog of Drosophila E(sp)

-1.1492104
 -1.1482968
 -1.14799829
 -1.14714337 Spo11 sporulation protein, meiosis-specific, SPO11 homolog (S. cerevisiae)
 -1.1469841 Olfir1347 olfactory receptor 1347
 -1.14687491
 -1.14482167
 -1.142667267 Ifi30 interferon gamma inducible protein 30
 -1.14254185
 -1.1419926 Erc1 ELKS/RAB6-interacting/CAST family member 1
 -1.1419816
 -1.1405473
 -1.1401272
 -1.1389709
 -1.1388106 Setd3 SET domain containing 3
 -1.1382933
 -1.1376331
 -1.1375965 Dendd1b DENN/MADD domain containing 1B
 -1.1375759 Prrg2 proline-rich Gla (G-carboxyglutamic acid) polypeptide 2
 -1.13694005 Ptpdc1 protein tyrosine phosphatase domain containing 1
 -1.13674976
 -1.13528965 Gm2590 predicted gene 2590
 -1.1347081 A930007ARIKEN cDNA A930007A09 gene
 -1.13470416 Vmn2r111 vomeronasal 2, receptor 111
 -1.13455107 BC005561 cDNA sequence BC005561
 -1.134470985
 -1.1336084 Tmem176ltransmembrane protein 176B
 -1.133309306 4632427E1RRIKEN cDNA 4632427E13 gene
 -1.13300846
 -1.1329389 Hrh3 histamine receptor H3
 -1.1323957 Cdc42ep4 CDC42 effector protein (Rho GTPase binding) 4
 -1.1315587 AU035318 EST AU035318
 -1.13152357 AU015680 expressed sequence AU015680
 -1.1294127 LOC10050zinc finger protein 717-like
 -1.1288557 Tctn2 tectonic family member 2
 -1.12790867 Gm10648 predicted gene 10648
 -1.12768895 Cpp1 centrosome and spindle pole associated protein 1
 -1.1274853 Hist1h2aa histone cluster 1, H2aa
 -1.12743614 4930432F1RRIKEN cDNA 4930432F04 gene
 -1.12677859
 -1.1266474 C130021HRRIKEN cDNA C130021H21 gene
 -1.1264143 Pea15a phosphoprotein enriched in astrocytes 15A
 -1.1262688 Angpt1 angiotensinogen 1
 -1.125427736
 -1.125197 2010015L1RRIKEN cDNA 2010015L04 gene
 -1.124361077
 -1.1232566
 -1.12268925 Prkar1a protein kinase, cAMP dependent regulatory, type I, alpha
 -1.12267164 Gadd45b growth arrest and DNA-damage-inducible 45 beta
 -1.1213679
 -1.1209416 A230051NRRIKEN cDNA A230051N06 gene
 -1.12079621
 -1.120502 Crp3 cysteine-rich protein 3
 -1.1185599
 -1.1177635 Rtp2 receptor transporter protein 2
 -1.11700201
 -1.116868
 -1.1167059
 -1.1166501
 -1.1164551 Neur1la neuralized homolog 1A (Drosophila)
 -1.115958628
 -1.1137829 Plekha5 pleckstrin homology domain containing, family A member 5
 -1.11372375 A630051NRRIKEN cDNA A630051N01 gene
 -1.1135282 Selenbp1 selenium binding protein 1
 -1.11351063 Gm10785 predicted gene 10785
 -1.11162566 Inad Inad-like (Drosophila)
 -1.1115823 2810040C1RRIKEN cDNA 2810040C05 gene
 -1.11152365 Gulp1 GULP, engulfment adaptor PTB domain containing 1
 -1.11124415
 -1.1108861 Trim3 tripartite motif-containing 3
 -1.1108466 Sh3rf1 SH3 domain containing ring finger 1
 -1.11080262
 -1.10768606 D13Ert87DNA segment, Chr 13, ERATO Doi 787, expressed
 -1.10719538 Tgfb3 transforming growth factor, beta receptor III
 -1.10716868 C430003NRRIKEN cDNA C430003N24 gene
 -1.106585035
 -1.1064105 Slc35d1 solute carrier family 35 (UDP-glucuronic acid/UDP-N-acetylgalactosamine dual transporter), member D1
 -1.1060028 Slc31a2 solute carrier family 31, member 2
 -1.10560794 Tcp11 t-complex protein 11
 -1.1053662 Ear2 eosinophil-associated, ribonuclease A family, member 2
 -1.105319 Akt2 thymoma viral proto-oncogene 2
 -1.1049113 Homer1 homer homolog 1 (Drosophila)
 -1.1037865 Ankrd50 ankyrin repeat domain 50
 -1.10363675
 -1.1031188
 -1.1028342
 -1.1007709
 -1.1003628 Pmaip1 phorbol-12-myristate-13-acetate-induced protein 1
 -1.0994124
 -1.09928033
 -1.098795866 Cdc14b CDC14 cell division cycle 14 homolog B (S. cerevisiae)
 -1.0972269
 -1.096879451
 -1.0957923 5830420C1RRIKEN cDNA 5830420C07 gene
 -1.0955233 Tns3 tensin 3
 -1.0954628 Bglap-rs1 bone gamma-carboxyglutamate protein, related sequence 1
 -1.0944276
 -1.09423114 2810455B1RRIKEN cDNA 2810455B08 gene
 -1.09372616
 -1.0936747
 -1.093007081
 -1.09277913 Mt1 metallothionein 1
 -1.092258 Acta2 actin, alpha 2, smooth muscle, aorta
 -1.0915775
 -1.0913711
 -1.0905881 Fam82b family with sequence similarity 82, member B
 -1.09023 Arfg2 ArfGAP with FG repeats 2
 -1.0891929
 -1.089169 Zawim6 zinc finger, SWIM domain containing 6
 -1.08842659
 -1.08735607 Rpsa ribosomal protein SA
 -1.0872803
 -1.08688688
 -1.0867481 Trio triple functional domain (PTPRF interacting)
 -1.0854149
 -1.0852809 Zfp61 zinc finger protein 61
 -1.0832186
 -1.0829573 Apl1s2 adaptor-related protein complex 1, sigma 2 subunit
 -1.08258467
 -1.08255197
 -1.0820364
 -1.0819525 Snx11 sorting nexin 11
 -1.0818453 Xylt2 xylosyltransferase II
 -1.081843415 Tuf1 tufelin 1
 -1.0806137

-1.08024786 9030601B1RIKEN cDNA 9030601B04 gene
 -1.0802431
 -1.07969471
 -1.07966086
 -1.0791788 Trpm1 transient receptor potential cation channel, subfamily M, member 1
 -1.0788164 Gabarapl1 gamma-aminobutyric acid (GABA) A receptor-associated protein-like 1
 -1.077537
 -1.07748746 Zswim6 zinc finger, SWIM domain containing 6
 -1.0771589 B930025B RIKEN cDNA B930025B16 gene
 -1.07713844 Gm15417 predicted gene 15417
 -1.07668114 Ccr4 chemokine (C-C motif) receptor 4
 -1.0765486
 -1.0760141 Mbd5 methyl-CpG binding domain protein 5
 -1.07591155
 -1.07559489
 -1.07549096 5730508B1RIKEN cDNA 5730508B09 gene
 -1.0754614
 -1.07424975 X76971 cDNA sequence X76971
 -1.0738732
 -1.0734701
 -1.0734377 Dleu7 deleted in lymphocytic leukemia, 7
 -1.0727271 LOC10050 hypothetical LOC100503330
 -1.072604
 -1.071925611
 -1.07181931 Cnksr3 Cnksr family member 3
 -1.0704355
 -1.069387
 -1.06906366
 -1.06869413
 -1.0679231
 -1.0678906
 -1.0677624 B230214O RIKEN cDNA B230214O09 gene
 -1.0674248
 -1.0670332 2410066E1RIKEN cDNA 2410066E13 gene
 -1.06662176
 -1.0653762
 -1.06522224
 -1.0648946 Gm14151 predicted gene 14151
 -1.0645452 Pam peptidylglycine alpha-amidating monooxygenase
 -1.0626612
 -1.0617476
 -1.06067176 2210020M1RIKEN cDNA 2210020M01 gene
 -1.0601378
 -1.0592904
 -1.05799965
 -1.05689623 Ralgapa2 Ral GTPase activating protein, alpha subunit 2 (catalytic)
 -1.05615235 A430106A RIKEN cDNA A430106A12 gene
 -1.0551572 Map4k5 mitogen-activated protein kinase kinase kinase 5
 -1.0550213
 -1.05387926 3300002A RIKEN cDNA 3300002A11 gene
 -1.0530169 Mx1 homeobox, msh-like 1
 -1.052928924
 -1.05285643
 -1.0528527
 -1.05142355 Zhand5 zinc finger, AN1-type domain 5
 -1.0508051 Slc31a2 solute carrier family 31, member 2
 -1.0507917 3110068AG RIKEN cDNA 3110068AG07 gene
 -1.0506906 3110099EG RIKEN cDNA 3110099EG03 gene
 -1.0498383 D2hgsh D-2-hydroxyglutarate dehydrogenase
 -1.0485769 4731420N1 hypothetical protein 4731420N1
 -1.0483894 Cnkg3 casein kinase 1, gamma 3
 -1.0478253
 -1.0468931
 -1.0465946
 -1.04590322
 -1.04565334 L1td1 LINE-1 type transposase domain containing 1
 -1.04496241
 -1.044072615 Gm2347 predicted gene 2347
 -1.0433907
 -1.0428989 Fam40a family with sequence similarity 40, member A
 -1.0424595 Mfsd6 major facilitator superfamily domain containing 6
 -1.04236792 Gas5 growth arrest specific 5
 -1.0419574
 -1.04180433 Pogz pogo transposable element with ZNF domain
 -1.04161024 Ctsh cathepsin H
 -1.0408315 Eif2ak4 eukaryotic translation initiation factor 2 alpha kinase 4
 -1.0400911
 -1.04008813 Dbndd1 dysbindin (dystrobrevin binding protein 1) domain containing 1
 -1.0400852
 -1.0397539
 -1.0387564 Zfp467 zinc finger protein 467
 -1.03853369
 -1.03804256
 -1.0376959 Adcy9 adenylate cyclase 9
 -1.0373021 Ankrd50 ankyrin repeat domain 50
 -1.037073
 -1.03700064
 -1.03593063
 -1.0351381 Ikzf1 IKAROS family zinc finger 1
 -1.0350018 Clec3b C-type lectin domain family 3, member b
 -1.034102 Heph hephaestin
 -1.03400997 Srsf2 serine/arginine-rich splicing factor 2
 -1.0336539 B230206F1RIKEN cDNA B230206F22 gene
 -1.0334248 Rreb1 ras responsive element binding protein 1
 -1.0331593
 -1.0323965
 -1.0315986
 -1.0308452
 -1.0308013
 -1.02989912 Gpatch8 G patch domain containing 8
 -1.0293155 Ifitm3 interferon induced transmembrane protein 3
 -1.029156168
 -1.02883002 Adra2b adrenergic receptor, alpha 2b
 -1.02777294 Krtap31-1 keratin associated protein 31-1
 -1.0257969 Npap1 NIPA-like domain containing 1
 -1.02531955 Cd300lf CD300 antigen like family member F
 -1.0239401 Yod1 YOD1 OTU deubiquitinating enzyme 1 homologue (S. cerevisiae)
 -1.0233168
 -1.02276517
 -1.022139 Syne1 synaptic nuclear envelope 1
 -1.0220948 Btg1 B-cell translocation gene 1, anti-proliferative
 -1.02195931 8030494B1RIKEN cDNA 8030494B02 gene
 -1.0219474
 -1.02090643
 -1.0205731 Zfp111 zinc finger protein 111
 -1.0203352
 -1.02022407
 -1.02004
 -1.0191955 Esr2 estrogen receptor 2 (beta)
 -1.0181639 Inpp5e inositol polyphosphate-5-phosphatase E
 -1.0180073 5430434G RIKEN cDNA 5430434G16 gene
 -1.01645564
 -1.0161176 2810008D1RIKEN cDNA 2810008D09 gene
 -1.0153861 Pot1a protection of telomeres 1A
 -1.0148801

-1.0144629
-1.0144219 Ggn gametogenetin
-1.01423168
-1.0134563 AB849538 expressed sequence AB849538
-1.0134444 2610028D1RKEN cDNA 2610028D06 gene
-1.01267767
-1.012053 Lcor ligand dependent nuclear receptor corepressor
-1.0112486
-1.01011568
-1.0099573
-1.00975656 S100a6 S100 calcium binding protein A6 (calyculin)
-1.0095153
-1.0093751 Gm13271 predicted gene 13271
-1.0092483 2610301B1RKEN cDNA 2610301B20 gene
-1.0089057
-1.008421
-1.0063976 Hs6st1 heparan sulfate 6-O-sulfotransferase 1
-1.0073238 Gm10008 predicted gene 10008
-1.00657175
-1.0064528
-1.0062446 5830427D1RKEN cDNA 5830427D02 gene
-1.0056131 Ndr4 N-myc downstream regulated gene 4
-1.0052395 Erff1 ERBB receptor feedback inhibitor 1
-1.0038872 St6galnac1ST6 (alpha-N-acetylneuraminyl-2,3-beta-galactosyl-1,3)-N-acetylgalactosamine alpha-2,6-sialyltransferase 1
-1.0038104 Tbc1 TBC1 domain containing kinase
-1.0014038
-1.00101707
-1.0008278

Supplementary Table 2. Primer information

qRT-PCR

Gene	Forward	Reverse primer
<i>Brd1</i>	GGCTAAGAAAACACTGGCTGA	CACCTGATTCGCAATCCTA
<i>Tcrb</i>	TTGATTCTCCTGTGTGCAAAA	CCTTGCTTCTTGGACTTTGG
<i>Cd8a</i>	TTACATCTGGGCACCCTTG	TTGCCTTCCTGTCTGACTAGC
<i>Cd8b1</i>	GGCTCTGGCTGGTCTTCA	GACGAAGGGGTCTGAATGAG
<i>Myb</i>	GAACAGATGGGCAGAGATCG	TTCCAGTGGTTCTTGATAGCATT
<i>Rag1</i>	AGGCCTGTGGAGCAAGGTA	GAAGTGAAGCTCAGGGTAGACG
<i>SIP₁</i>	CGGTGTAGACCCAGAGTCCT	AGCTTTTCCTTGGCTGGAG
<i>SIP₂</i>	CCCAACTCCGGGACATAGA	ACAGCCAGTGGTTGGTTTTG
<i>SIP₃</i>	AGATGCGCCTTGCAGAAC	AGAGTGGTGGTGGGTTCT
<i>SIP₄</i>	CGTGATGAATGTTTGGCAGA	CCCTTCAAGGCCAGACT
<i>SIP₅</i>	GGAGTGCCGTTACAGGAG	GAAGGACAATAACCTCACTCACC
<i>Zbtb7b</i>	AGAAGCCCTTTGCCTGTGA	TGTGGATCTTCAGCTTGTCATTC

ChIP-qPCR

Gene	Forward	Reverse primer
E8IV	GTACAAAGCCCTGGGTTCAA	CTGTGGCCAAAAATGACCTT
E8III-1	TGAGGAAGCAAACACAGCAC	TCTGGCAGCAGCAGAACTTA
E8III-2	CCCTCAGATCAGCTCAGGTC	TGGTGGGAGGATGCTCTAAG
E8II	TGCGGTGGTCTAGATTGACA	TGCAGCTGCTCTTCTCTGAA
E8I	CTGTGGTATCTGGGGCAACT	GCTAGGTGGGAAAGAACGTG
E8I-1	CCTCAAACAAAGCCTCTTGC	GGCCTGCTGTAACCTCAGAA

E8I-2	AAAAGCAGGCAGAGTCCTCA	TTTTCCAGAGTGGGGTATGC
E8V-1	ACACAGTGGAAGGTGGTTGA	TATTTATGGCTGGGCACTCC
E8V-2	ACAGAGAAACCCTGCCTTGA	ACCCTTGGTCATGGTGTTTT
E8V-3	GTGCCAGGGACAGAGAAGAG	TCTGACTTGGGCCTTTGACT
Cd8a-P	CCCCTAAAAGGTGGTTGACA	TTTAGCCAGCTGCAGACAGA
Cd8b1-P	TGTCTGAATTAGGGCCAAGC	CTCGGGACAGAACCCTGATA
Cd4-S	AACCACAAGGGTCGCTTAGA	CTAGCCCAGTTGTGGGATGT
p16-P	CACTGCACTGGAAGAGGACA	CTGAAGGTCCTGGGTTCAAA

Genomic PCR

Gene	Forward	Reverse primer
<i>Brd1 flox</i>	GCTTGGTCTAAAGAGGTGTC	GGATGACAGAAGCCTTCAGA
<i>Brd1</i> Δ	GCTTGGTCTAAAGAGGTGTC	ACCTTACTGAGGATGGTAGTTCAC
<i>Tie2-Cre</i>	AAACAAGAGCGAGTGGACCATGCG	TTTTGCACGTTCAACGGCATCAACG