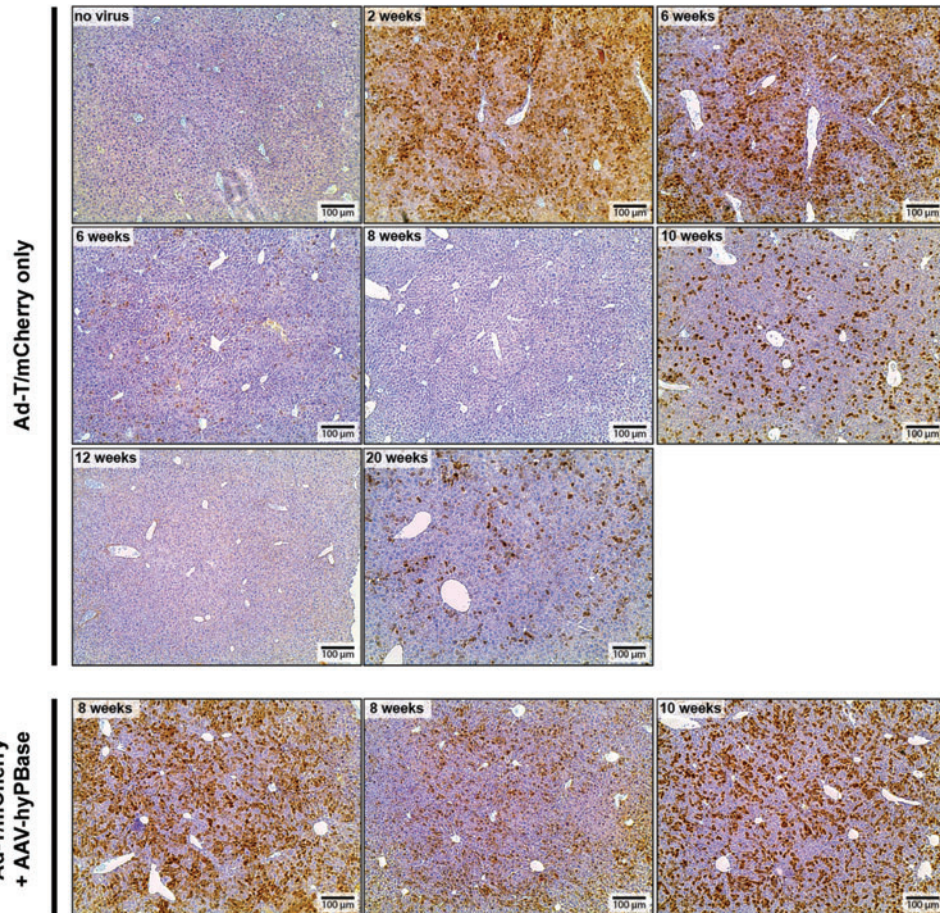


Supplementary Data



SUPPLEMENTARY FIG. S1. mCherry expression in liver samples decreases over time in mice that received only Ad-T/mCherry virus. Immunohistochemistry detecting mCherry in mouse liver sections shows that expression of the reporter is gradually lost in mice that received only the Ad-T/mCherry virus, although the degree of mCherry expression is lost at different rates. By contrast, mice that also received the AAV-hyPBBase virus maintain mCherry expression. AAV, adeno-associated virus; Ad, adenovirus.