

## Supplementary information

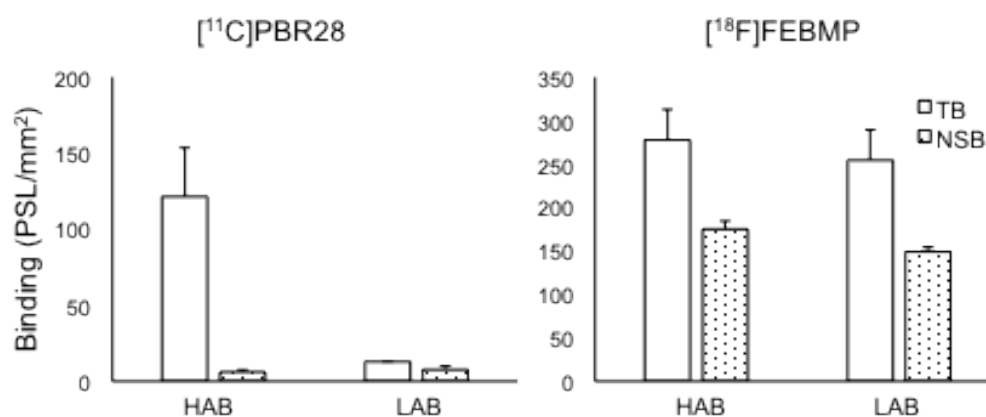


Figure S1. Quantitative analysis for binding (PSL/mm<sup>2</sup>; mean  $\pm$  SEM, >10 brain sections for each) of  $[^{11}\text{C}]\text{PBR28}$  and  $[^{18}\text{F}]\text{FEBMP}$ . Autoradiography with  $[^{11}\text{C}]\text{PBR28}$  showed that there was overt and negligible specific binding in HAB ( $n = 2$ ) and LAB ( $n = 2$ ), respectively, strongly in contrast to the case of  $[^{18}\text{F}]\text{FEBMP}$ , which showed that similar level in specific binding between these HAB and LAB. TB: total binding, NSB: non-specific binding (in the presence of unlabeled PK11195 (10  $\mu\text{M}$ )).