

Supporting Information

Glycomic Profiling of Carcinoembryonic Antigen Isolated from Human Tumor Tissue

Chuncui Huang¹, (huangchuncui111@163.com)

Tiancheng Zhan², (jessecrash@sina.com)

Yaming Liu¹, (lymzzu2009@163.com)

Qianqian Li¹, (liqianqian.2006@163.com)

Hongmei Wu¹, (wuhongmei@moon.ibp.ac.cn)

Dengbo Ji², (jidengbo@bjmu.edu.cn)

Yan Li¹,* Correspondence: (yanli@ibp.ac.cn)

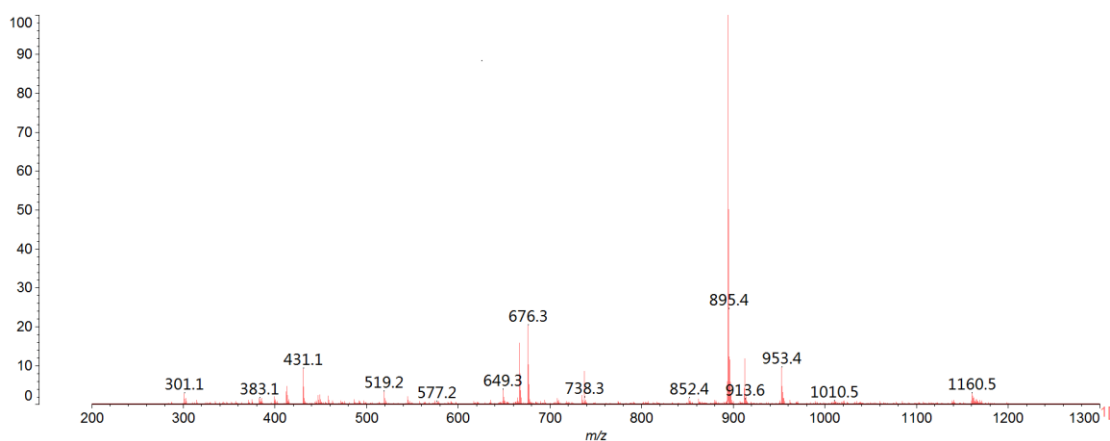


Figure S1, MALDI-TOF/TOF fragment ion spectra of the parent ions at m/z 1171

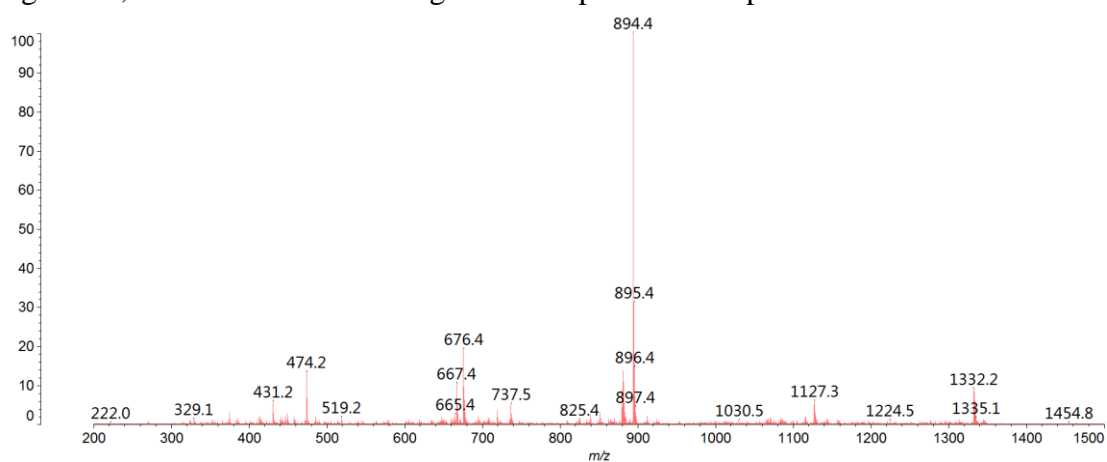


Figure S2, MALDI-TOF/TOF fragment ion spectra of the parent ions at m/z 1345

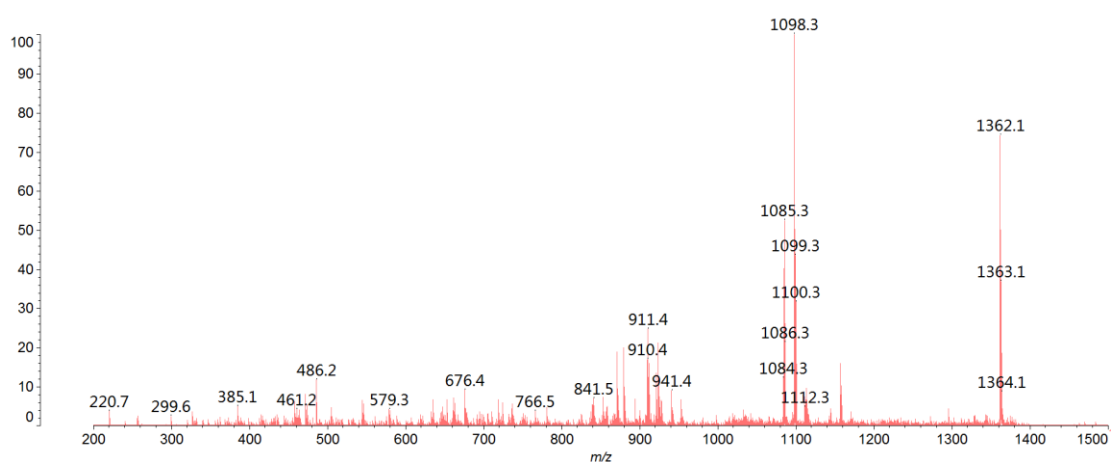


Figure S3, MALDI-TOF/TOF fragment ion spectra of the parent ions at m/z 1375

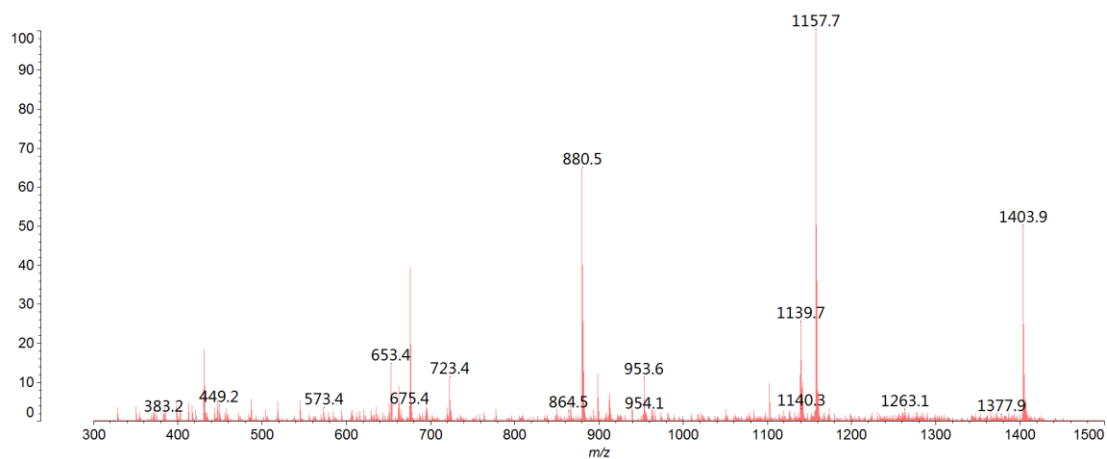


Figure S4, MALDI-TOF/TOF fragment ion spectra of the parent ions at m/z 1416

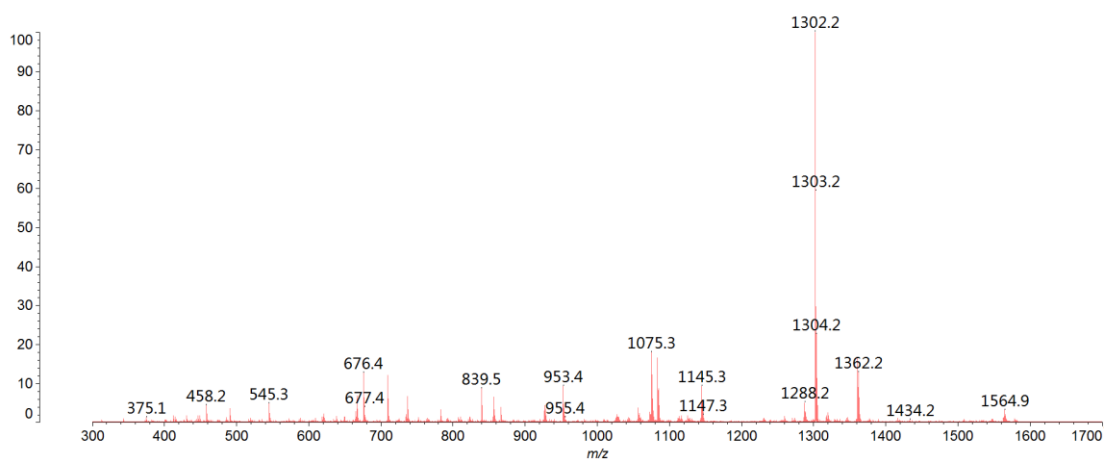


Figure S5, MALDI-TOF/TOF fragment ion spectra of the parent ions at m/z 1579

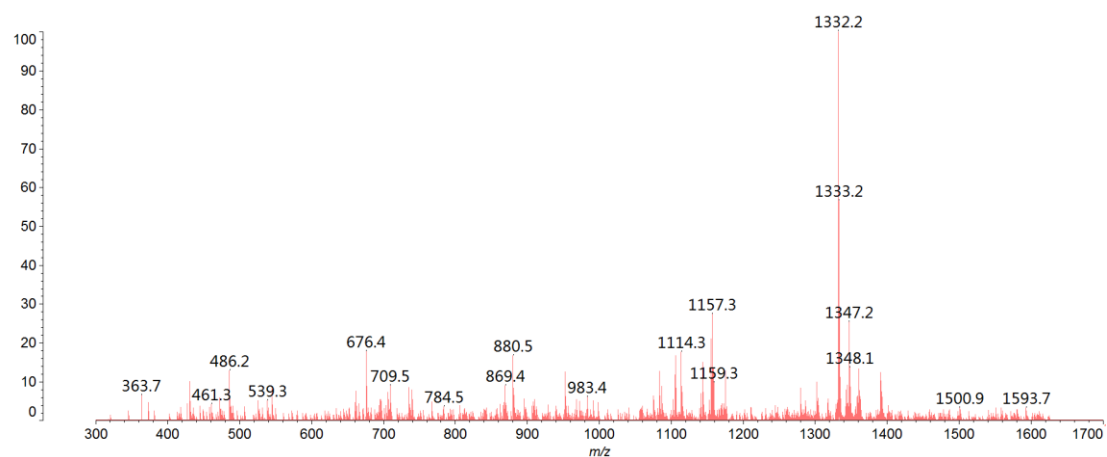


Figure S6, MALDI-TOF/TOF fragment ion spectra of the parent ions at m/z 1620

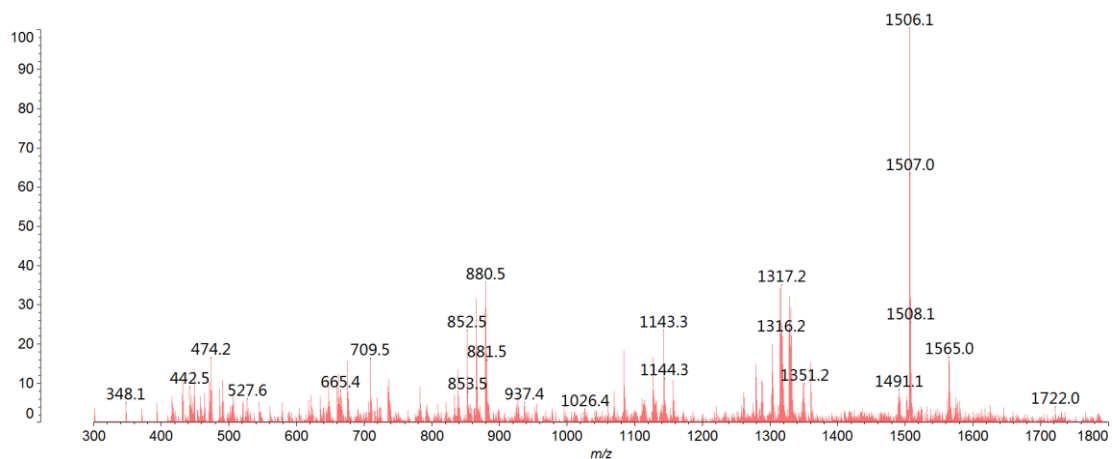


Figure S7, MALDI-TOF/TOF fragment ion spectra of the parent ions at m/z 1783

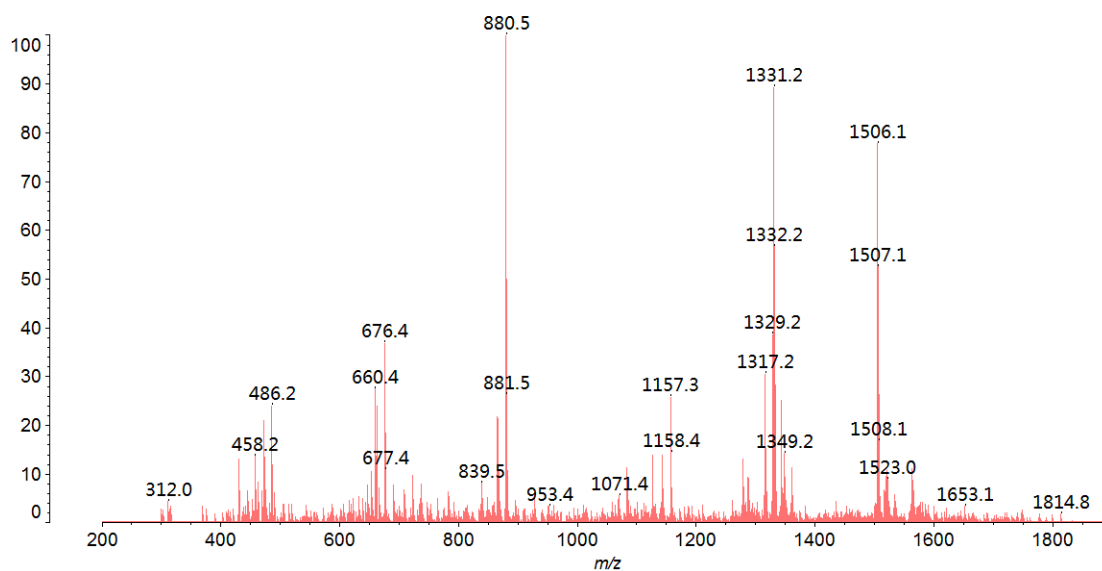


Figure S8, MALDI-TOF/TOF fragment ion spectra of the parent ions at m/z 1794

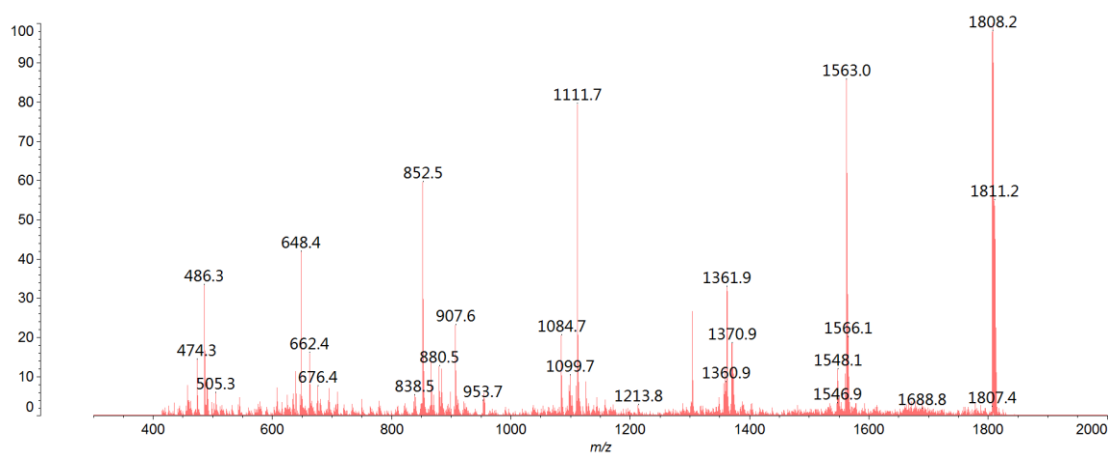


Figure S9, MALDI-TOF/TOF fragment ion spectra of the parent ions at m/z 1824

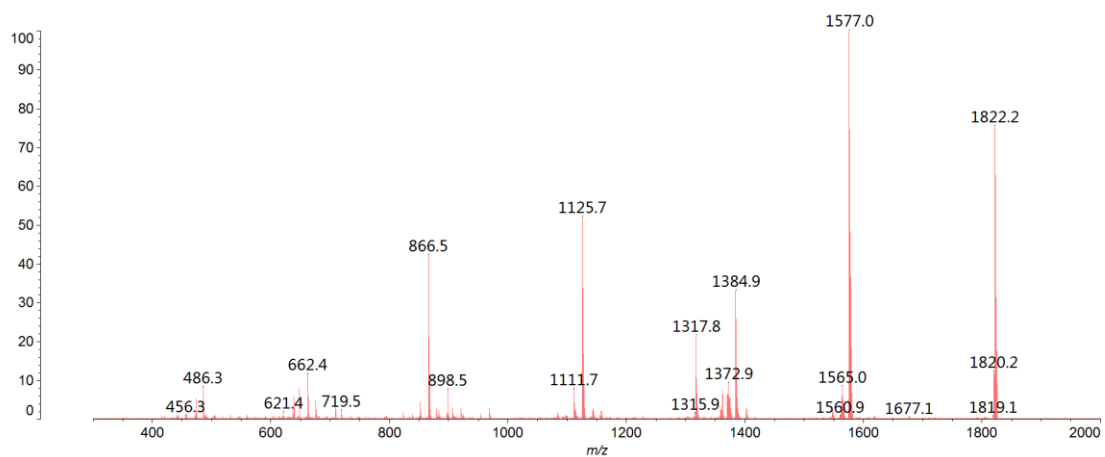


Figure S10, MALDI-TOF/TOF fragment ion spectra of the parent ions at m/z 1835

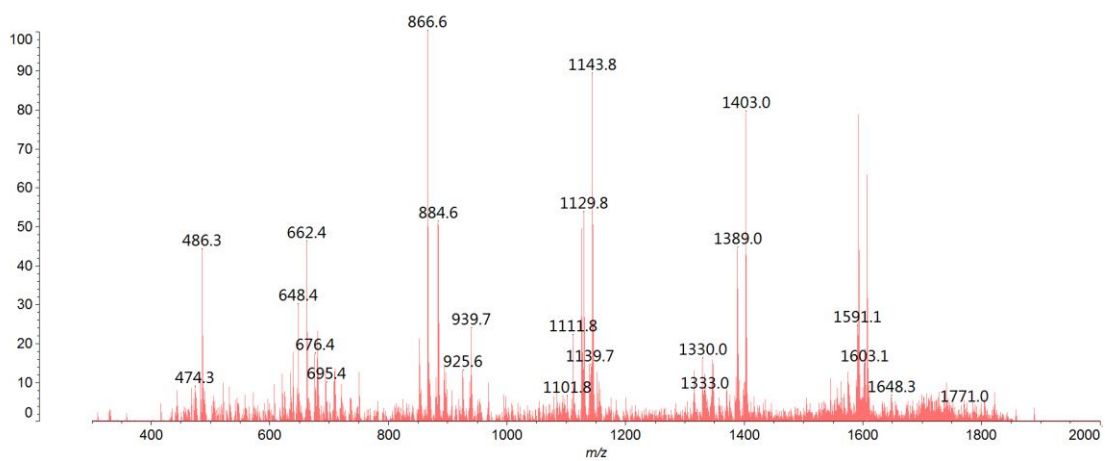


Figure S11, MALDI-TOF/TOF fragment ion spectra of the parent ions at m/z 1866

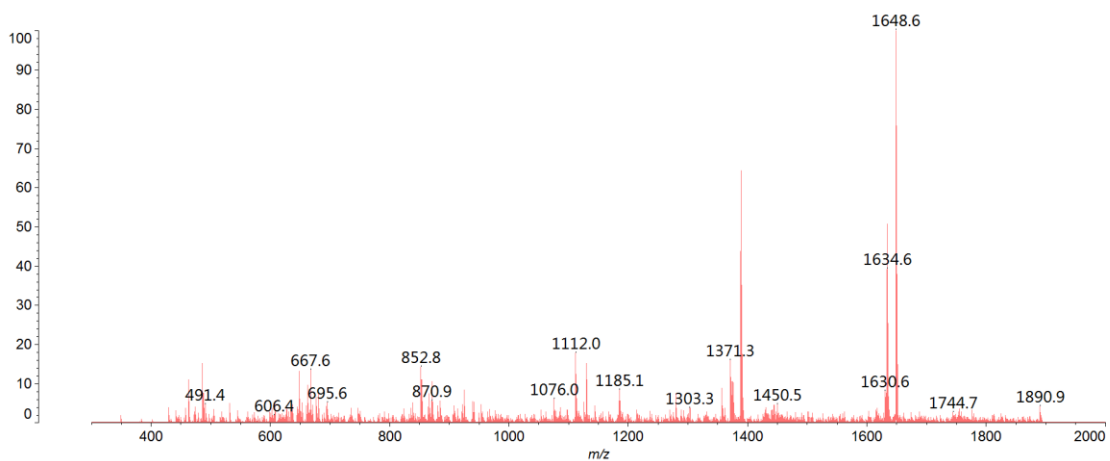


Figure S12, MALDI-TOF/TOF fragment ion spectra of the parent ions at m/z 1906

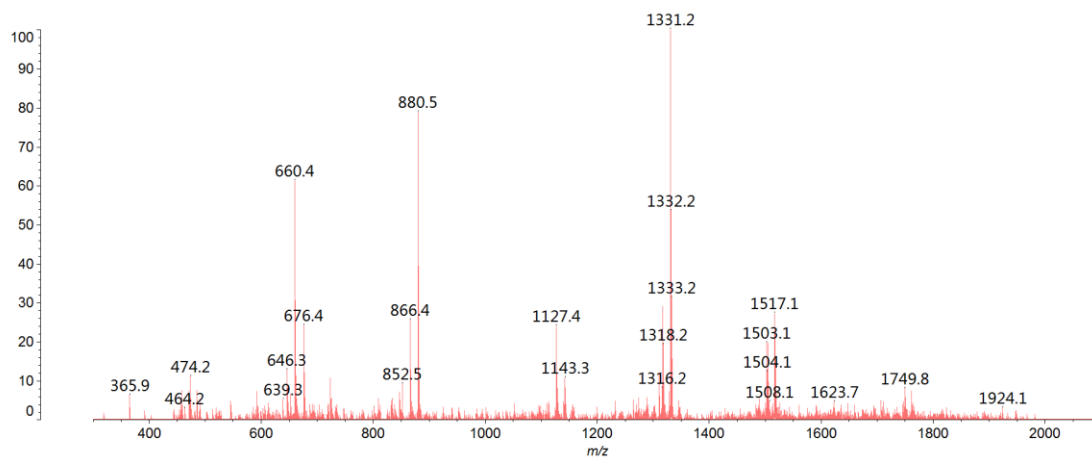


Figure S13, MALDI-TOF/TOF fragment ion spectra of the parent ions at m/z 1968

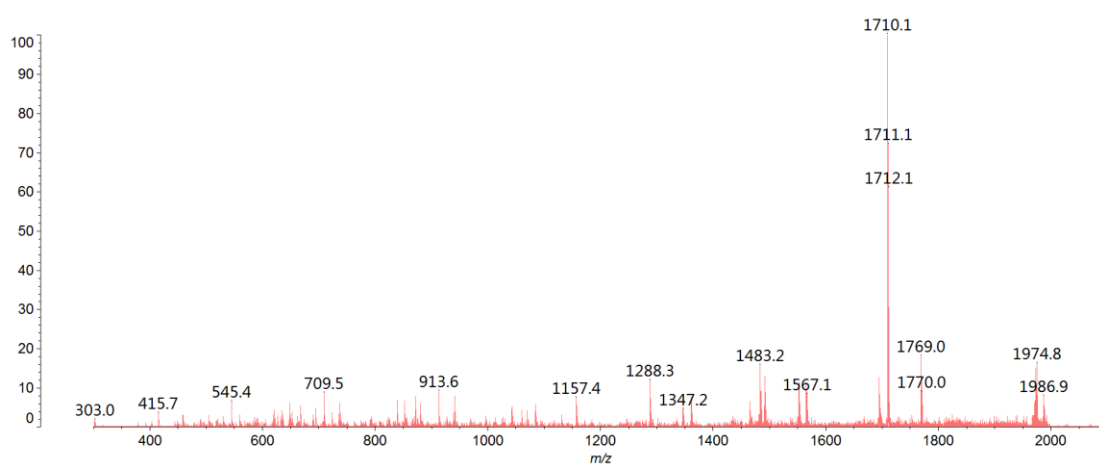


Figure S14, MALDI-TOF/TOF fragment ion spectra of the parent ions at m/z 1987

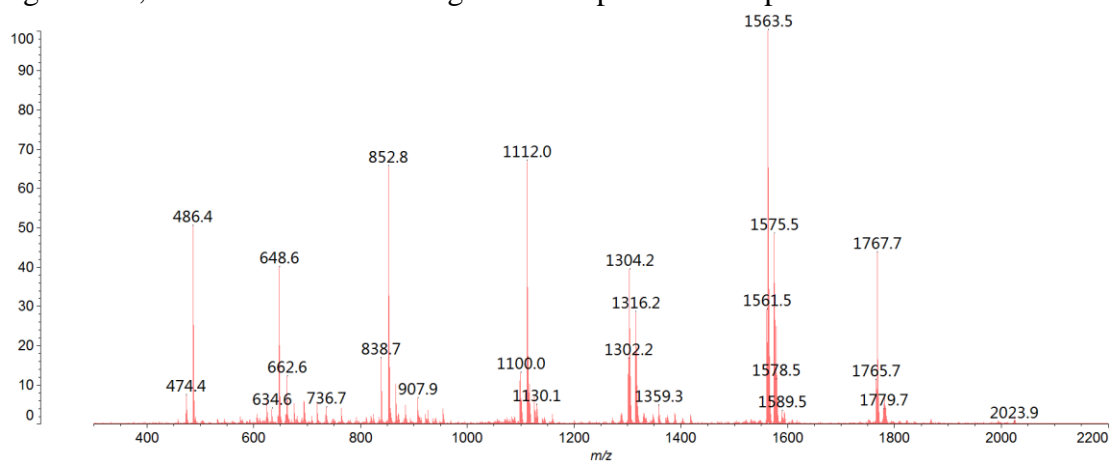


Figure S15, MALDI-TOF/TOF fragment ion spectra of the parent ions at m/z 2040

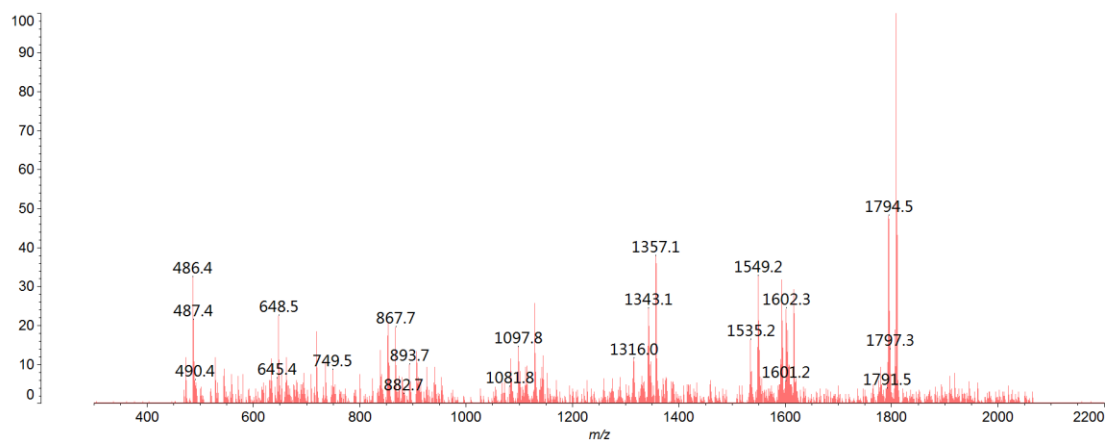


Figure S16, MALDI-TOF/TOF fragment ion spectra of the parent ions at m/z 2070

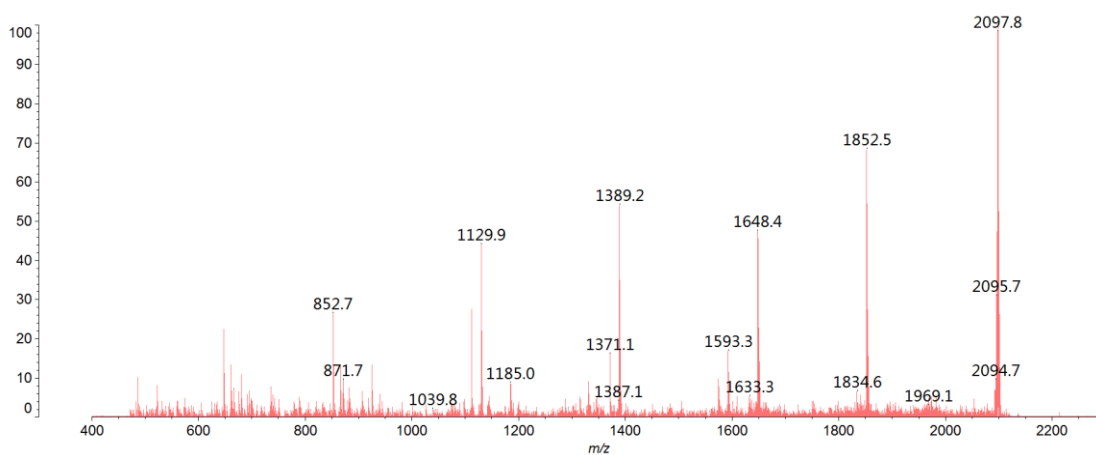


Figure S17, MALDI-TOF/TOF fragment ion spectra of the parent ions at m/z 2111

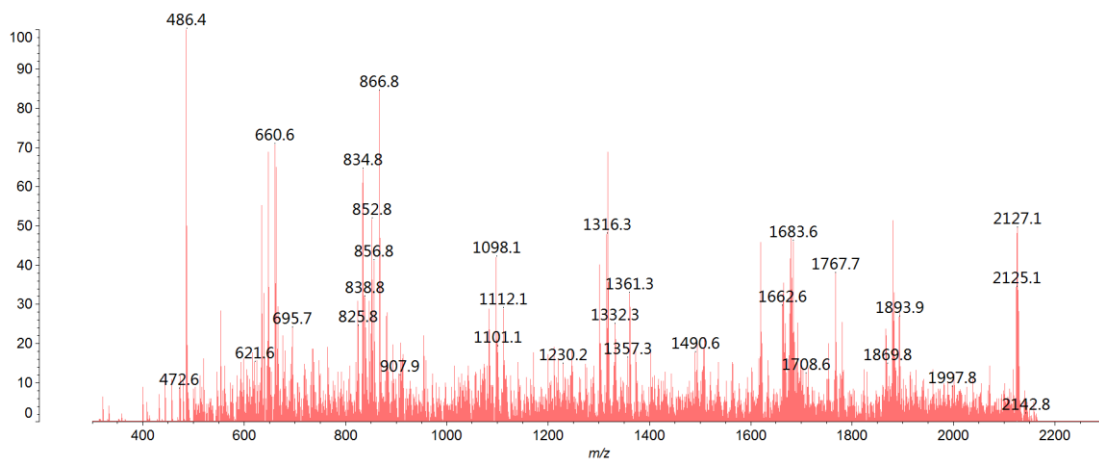


Figure S18, MALDI-TOF/TOF fragment ion spectra of the parent ions at m/z 2143

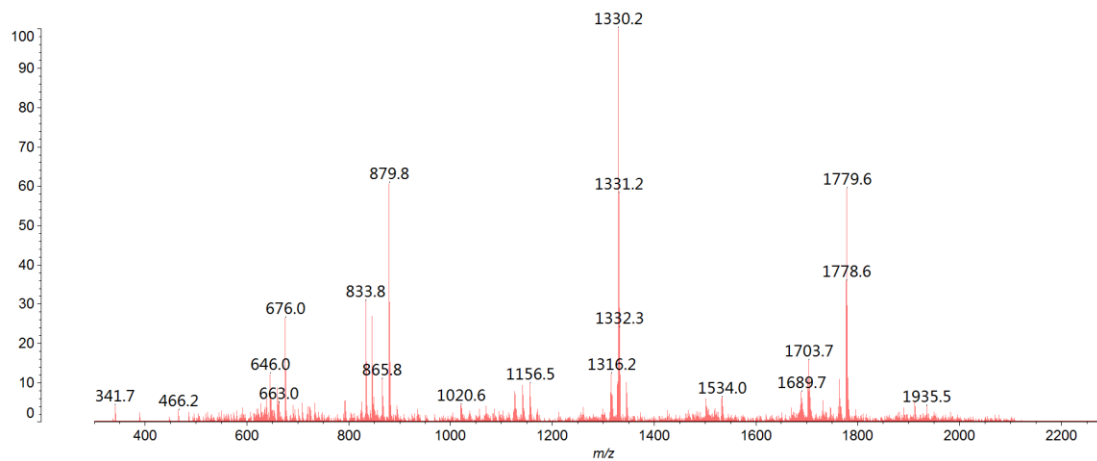


Figure S19, MALDI-TOF/TOF fragment ion spectra of the parent ions at m/z 2156

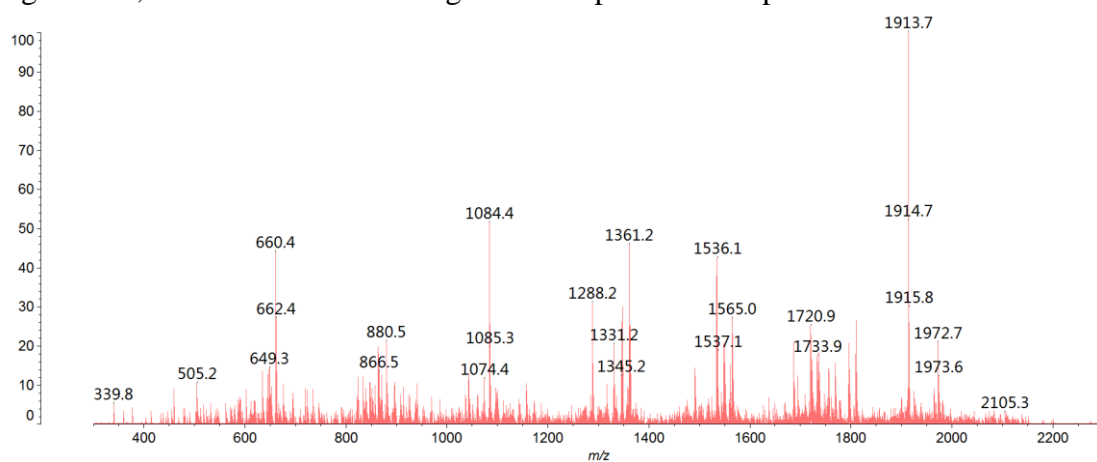


Figure S20, MALDI-TOF/TOF fragment ion spectra of the parent ions at m/z 2192

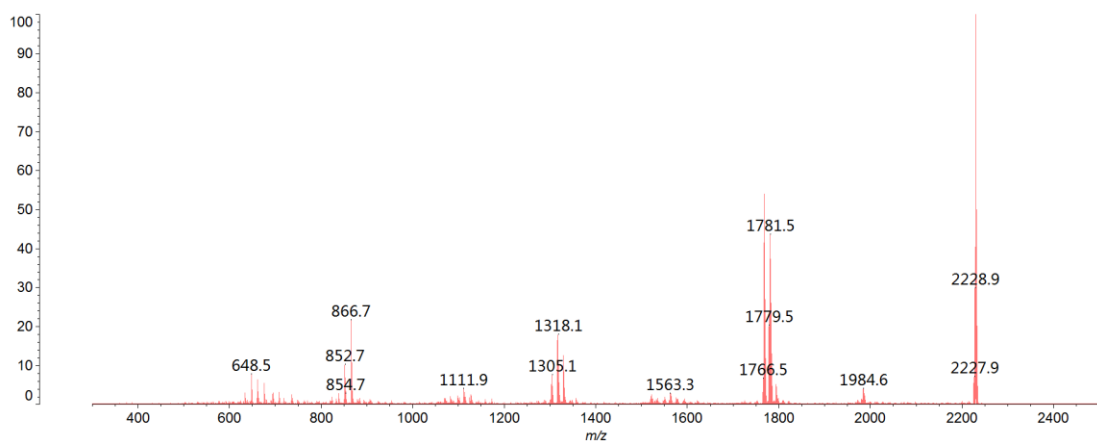


Figure S21, MALDI-TOF/TOF fragment ion spectra of the parent ions at m/z 2244

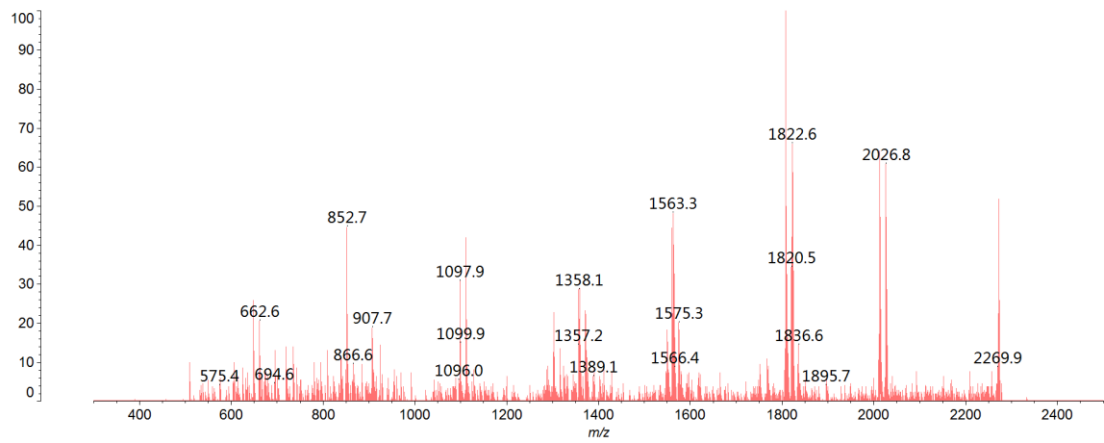


Figure S22, MALDI-TOF/TOF fragment ion spectra of the parent ions at m/z 2285

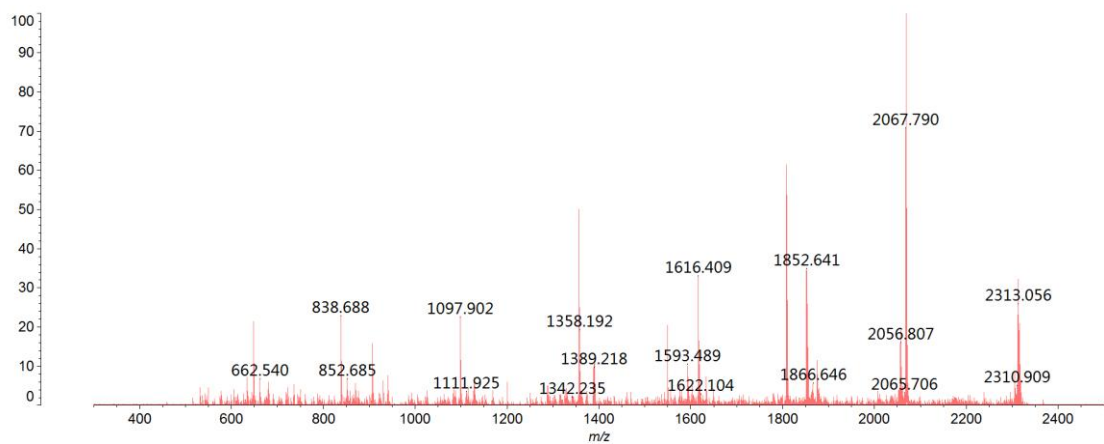


Figure S23, MALDI-TOF/TOF fragment ion spectra of the parent ions at m/z 2326

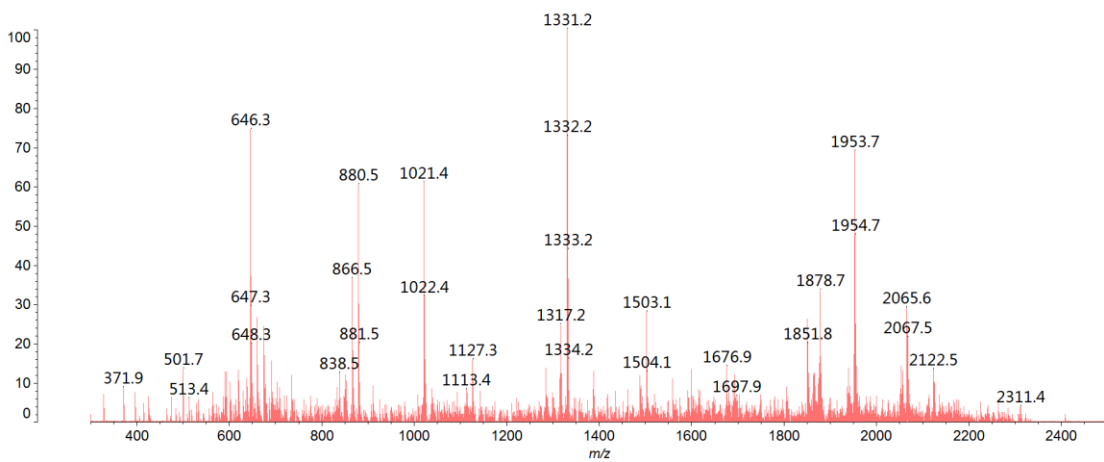


Figure S24, MALDI-TOF/TOF fragment ion spectra of the parent ions at m/z 2330

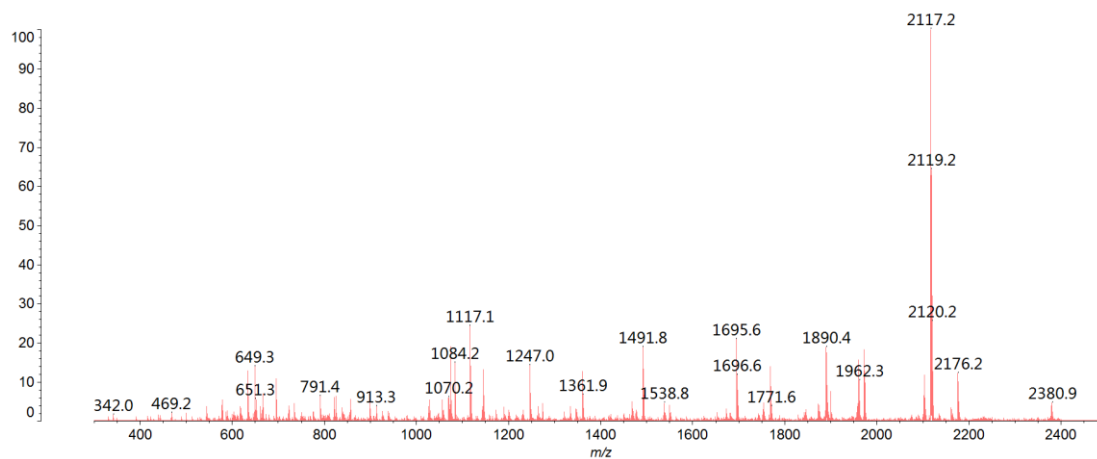


Figure S25, MALDI-TOF/TOF fragment ion spectra of the parent ions at m/z 2395

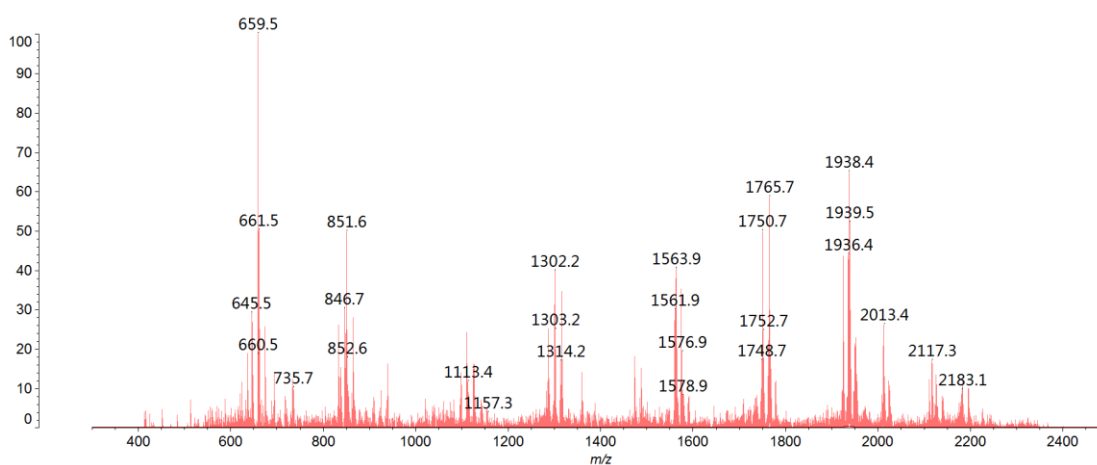


Figure S26, MALDI-TOF/TOF fragment ion spectra of the parent ions at m/z 2401

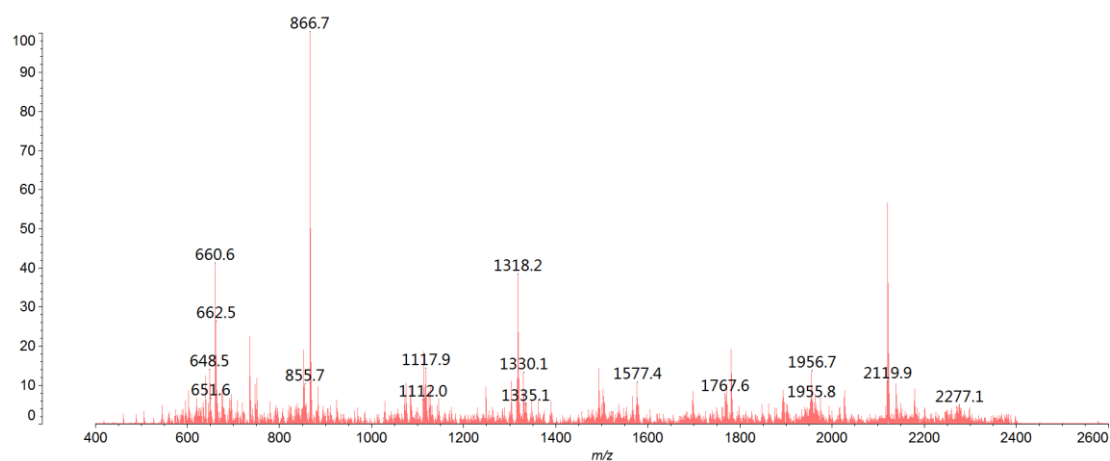


Figure S27, MALDI-TOF/TOF fragment ion spectra of the parent ions at m/z 2418

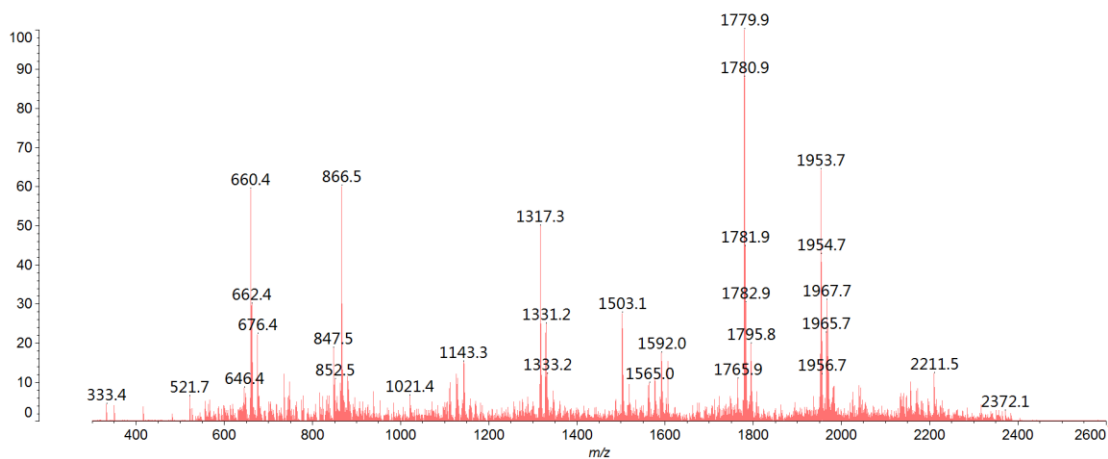


Figure S28, MALDI-TOF/TOF fragment ion spectra of the parent ions at m/z 2431

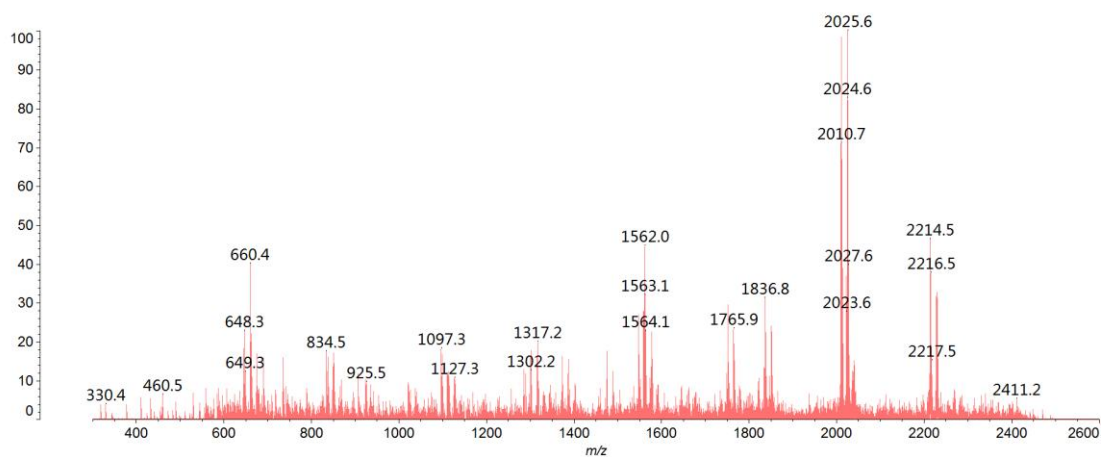


Figure S29, MALDI-TOF/TOF fragment ion spectra of the parent ions at m/z 2489

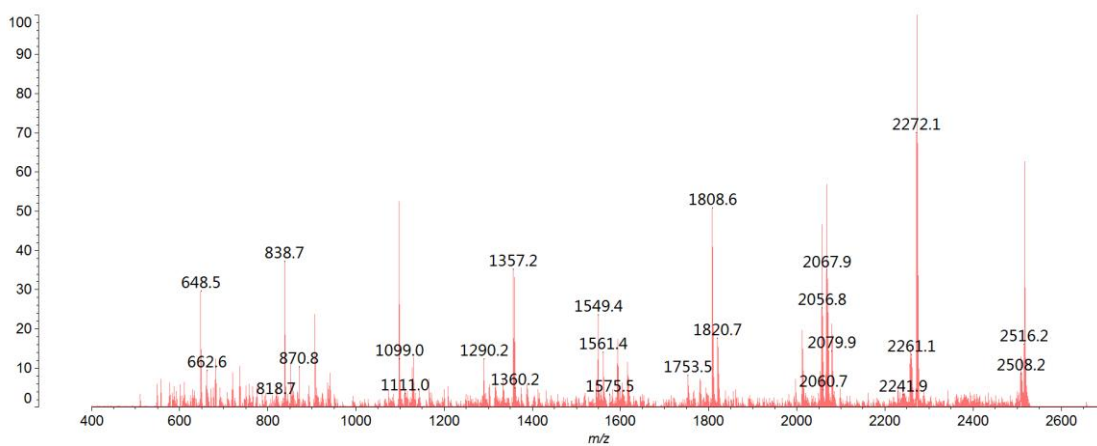


Figure S30, MALDI-TOF/TOF fragment ion spectra of the parent ions at m/z 2530

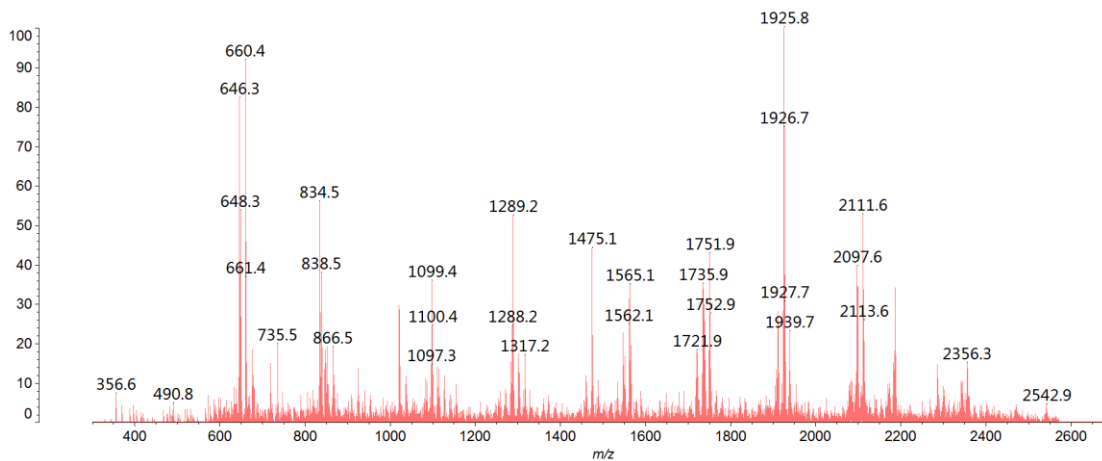


Figure S31, MALDI-TOF/TOF fragment ion spectra of the parent ions at m/z 2562

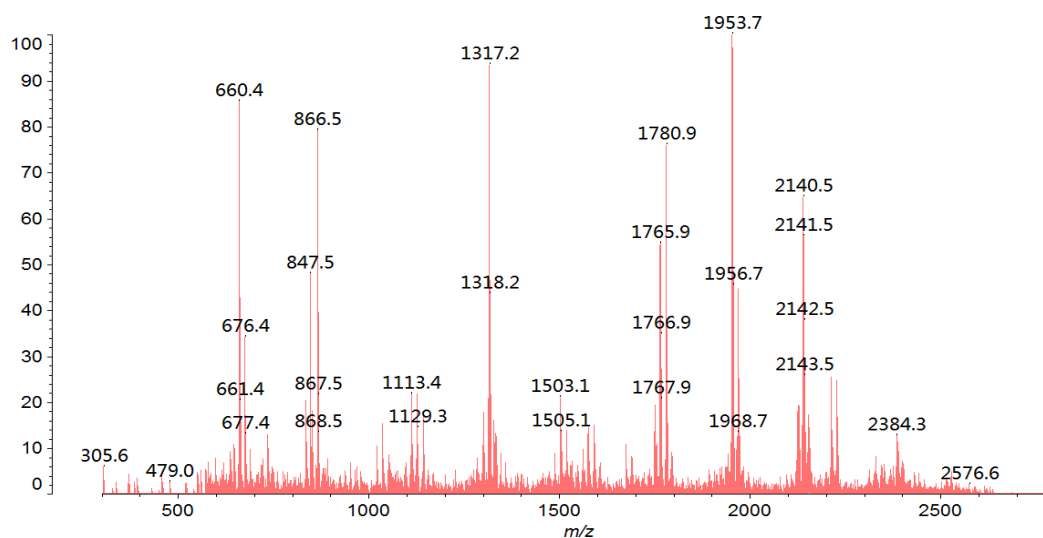


Figure S32, MALDI-TOF/TOF fragment ion spectra of the parent ions at m/z 2605

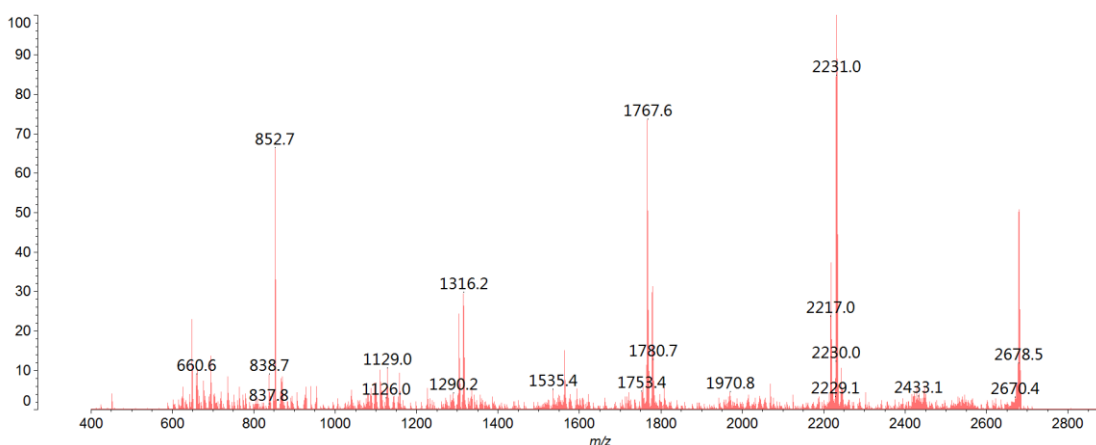


Figure S33, MALDI-TOF/TOF fragment ion spectra of the parent ions at m/z 2693



Figure S34, MALDI-TOF/TOF fragment ion spectra of the parent ions at m/z 2734

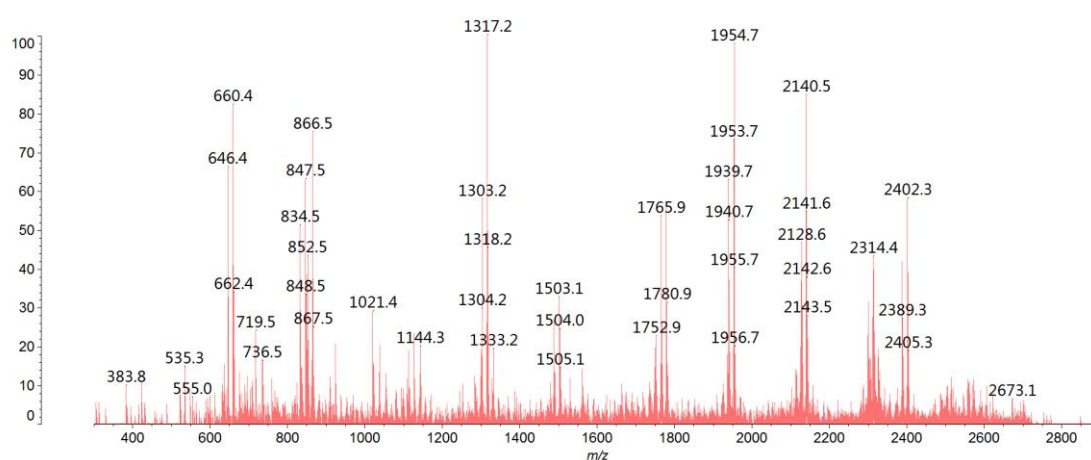


Figure S35, MALDI-TOF/TOF fragment ion spectra of the parent ions at m/z 2779

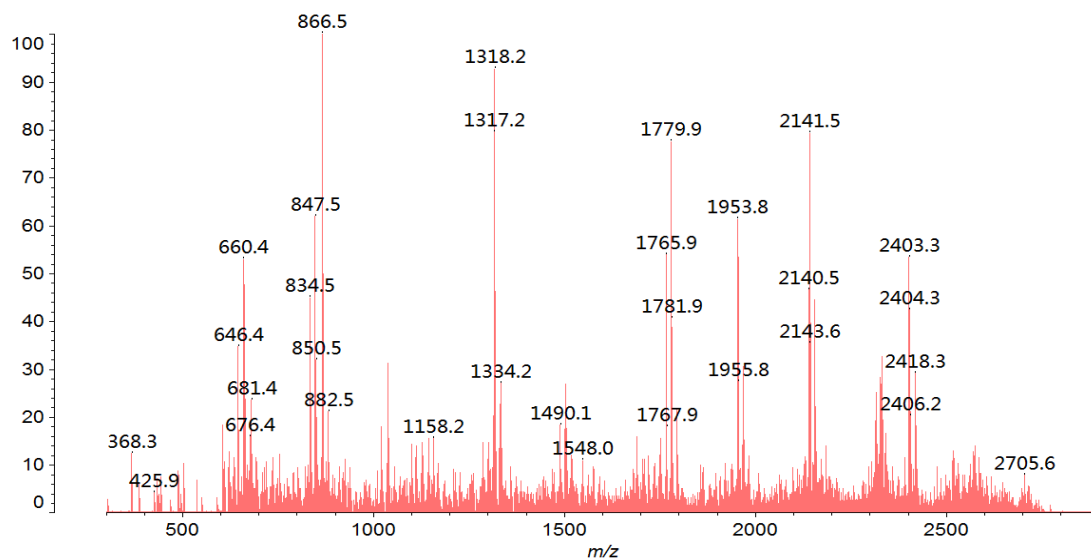


Figure S36, MALDI-TOF/TOF fragment ion spectra of the parent ions at m/z 2792

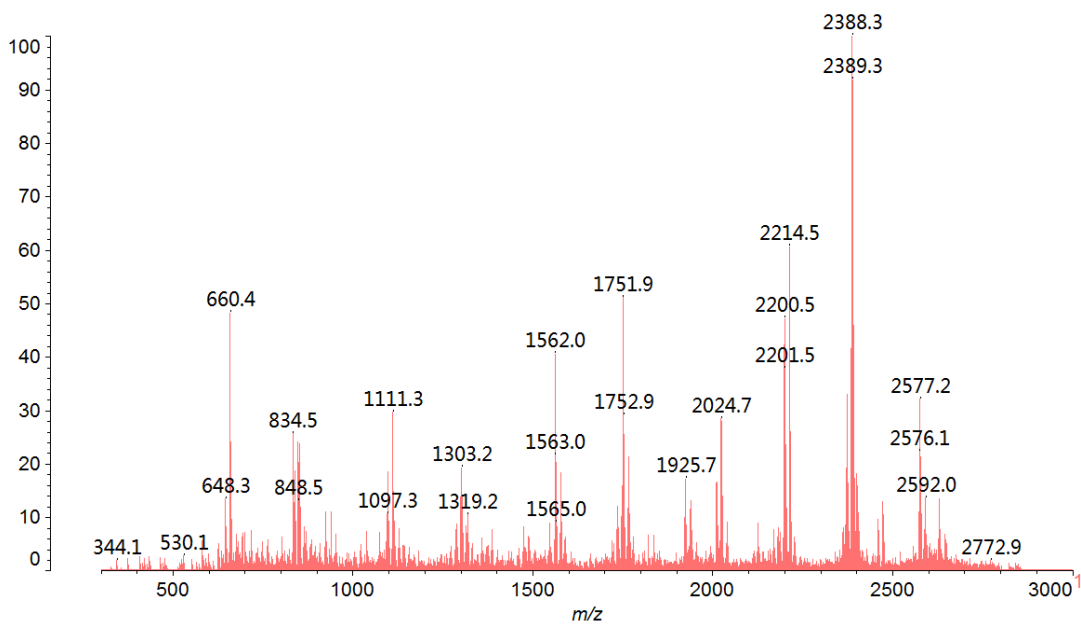


Figure S37, MALDI-TOF/TOF fragment ion spectra of the parent ions at m/z 2850

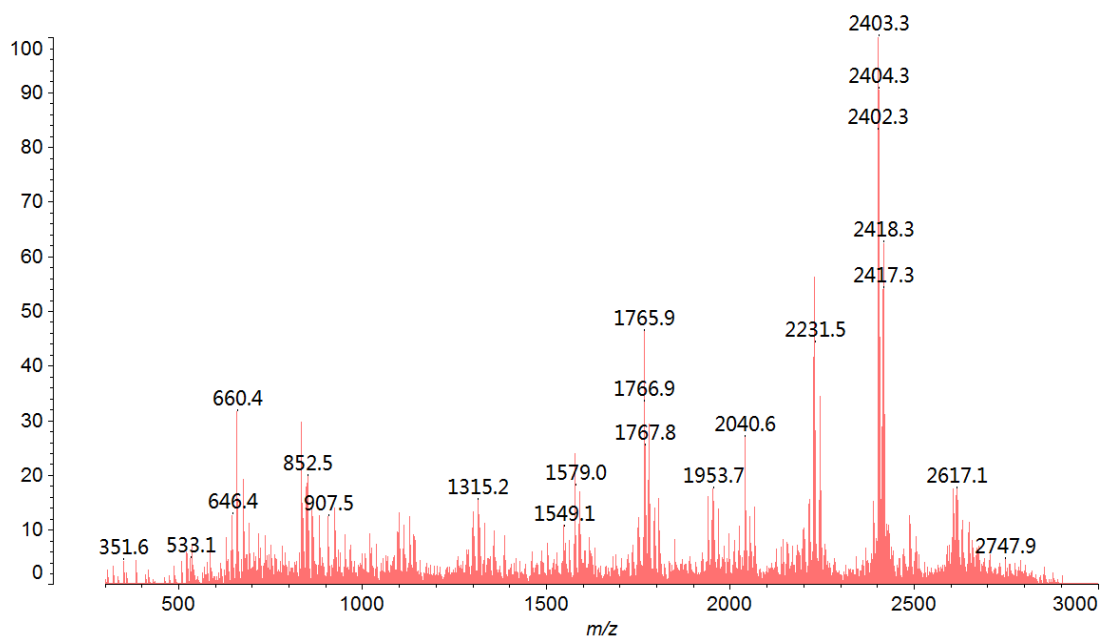


Figure S38, MALDI-TOF/TOF fragment ion spectra of the parent ions at m/z 2880

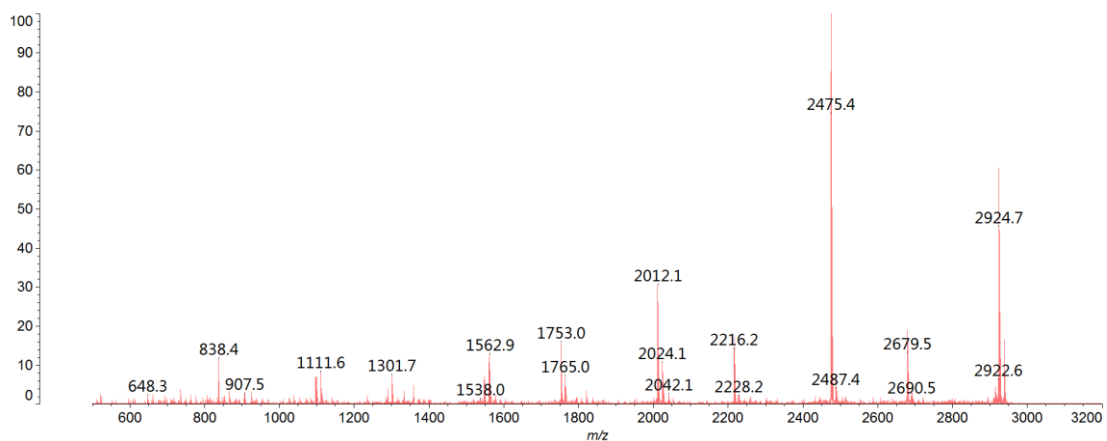


Figure S39, MALDI-TOF/TOF fragment ion spectra of the parent ions at m/z 2938

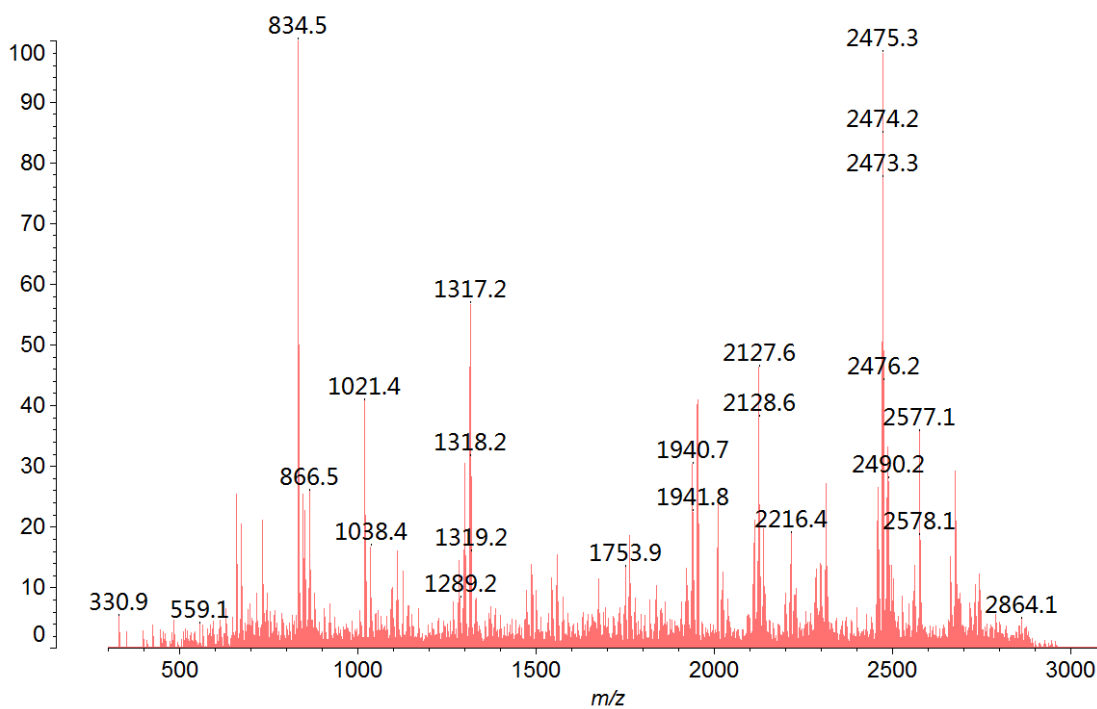


Figure S40, MALDI-TOF/TOF fragment ion spectra of the parent ions at m/z 2953

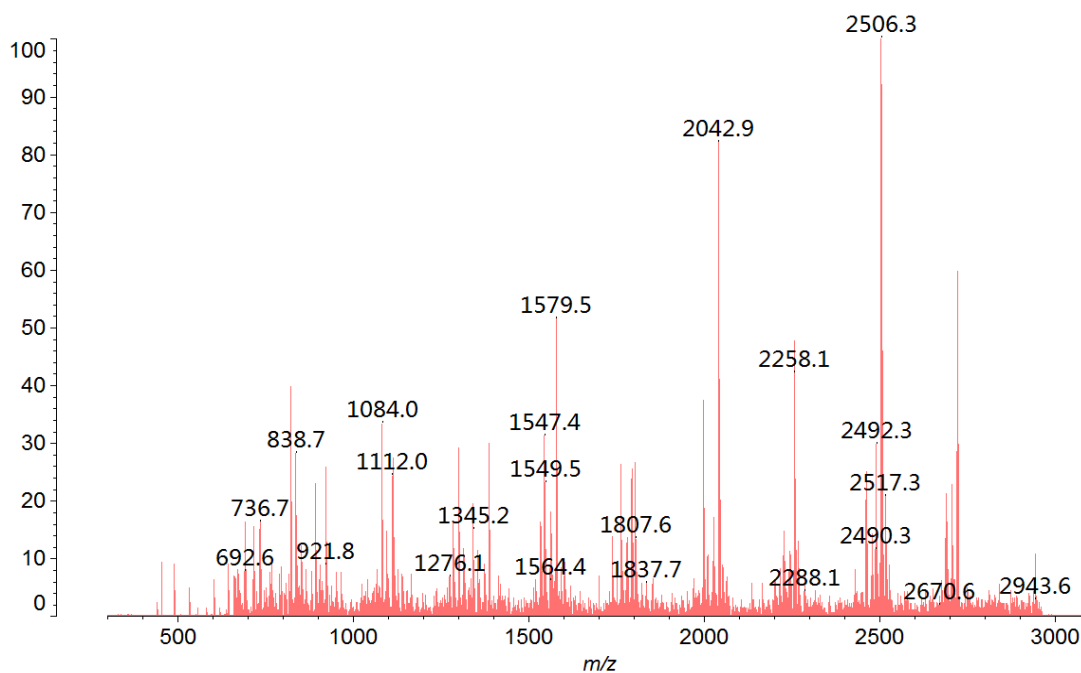


Figure S41, MALDI-TOF/TOF fragment ion spectra of the parent ions at m/z 2966

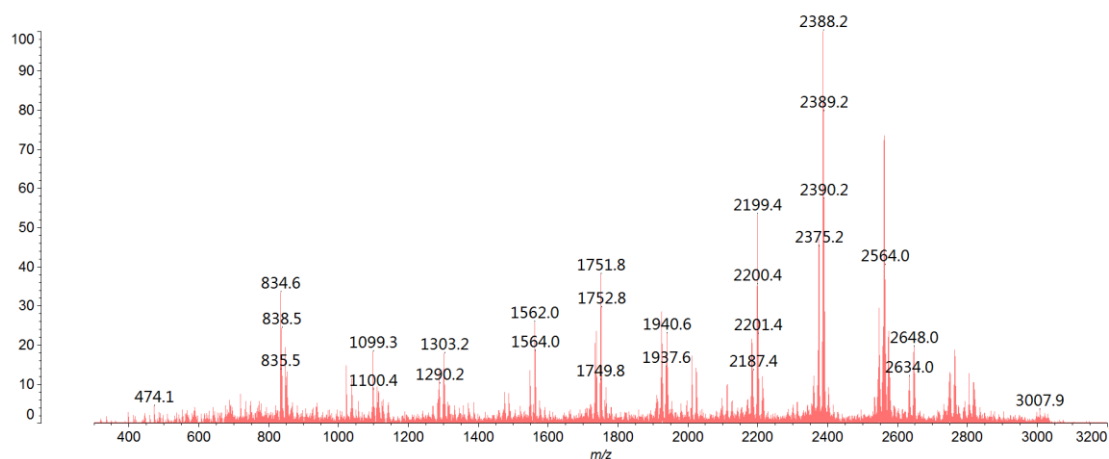


Figure S42, MALDI-TOF/TOF fragment ion spectra of the parent ions at m/z 3024

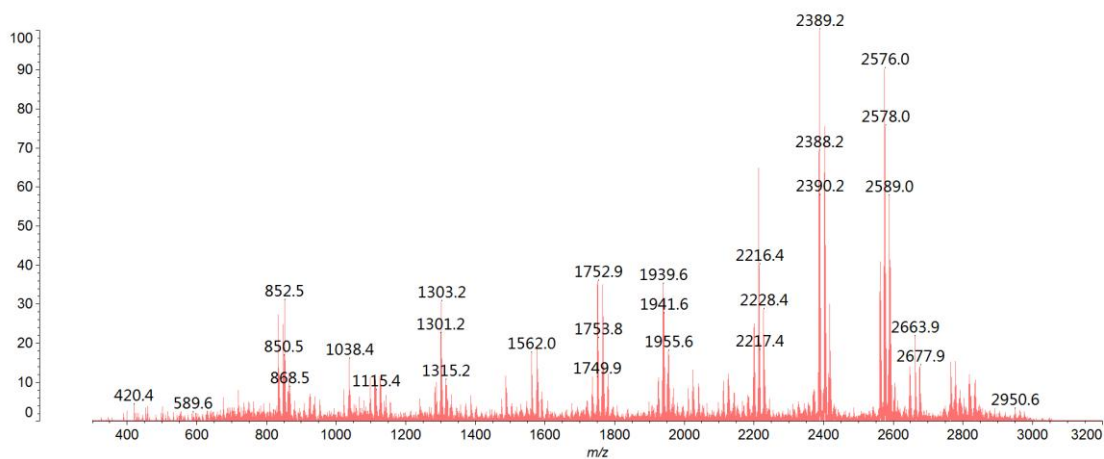


Figure S43, MALDI-TOF/TOF fragment ion spectra of the parent ions at m/z 3054

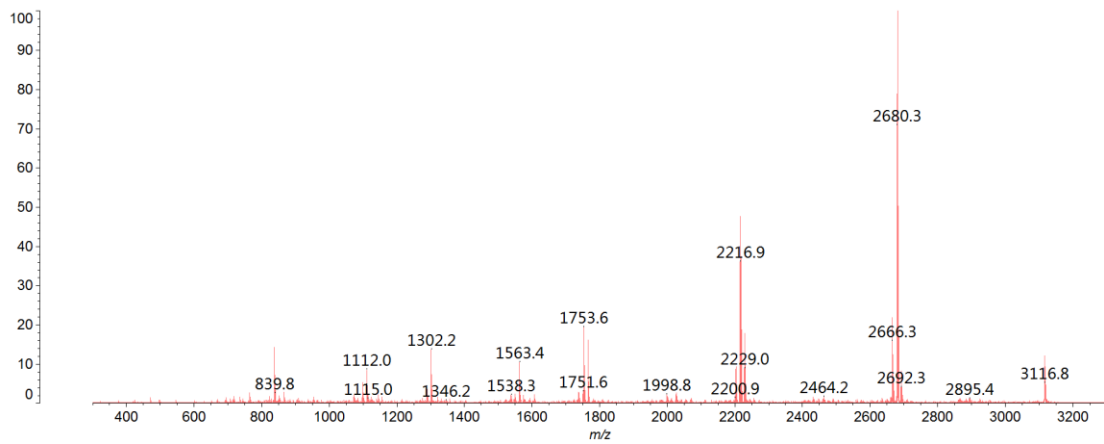


Figure S44, MALDI-TOF/TOF fragment ion spectra of the parent ions at m/z 3142

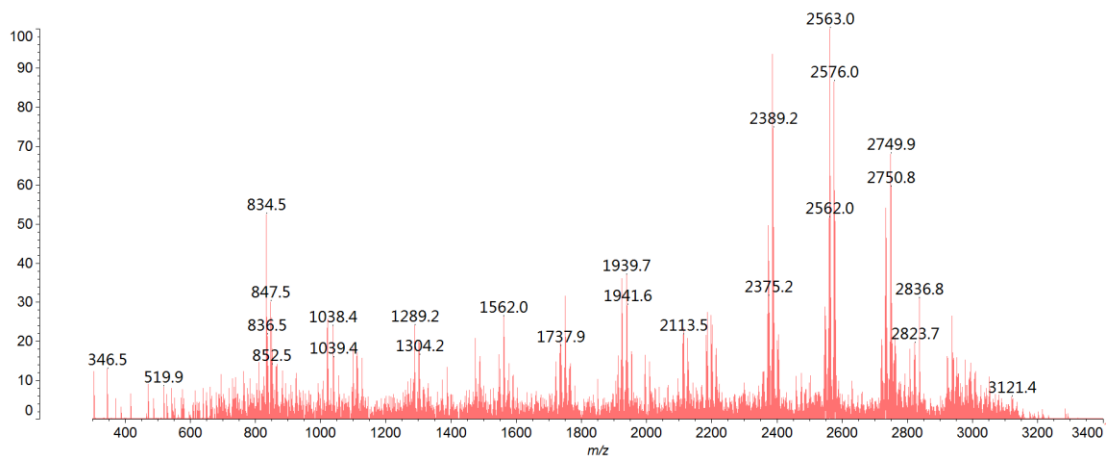


Figure S45, MALDI-TOF/TOF fragment ion spectra of the parent ions at m/z 3211

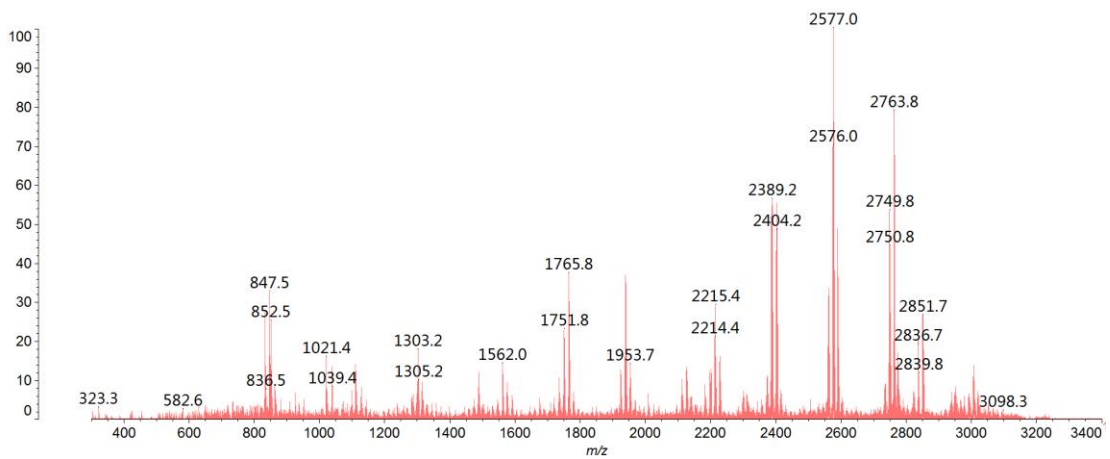


Figure S46, MALDI-TOF/TOF fragment ion spectra of the parent ions at m/z 3228

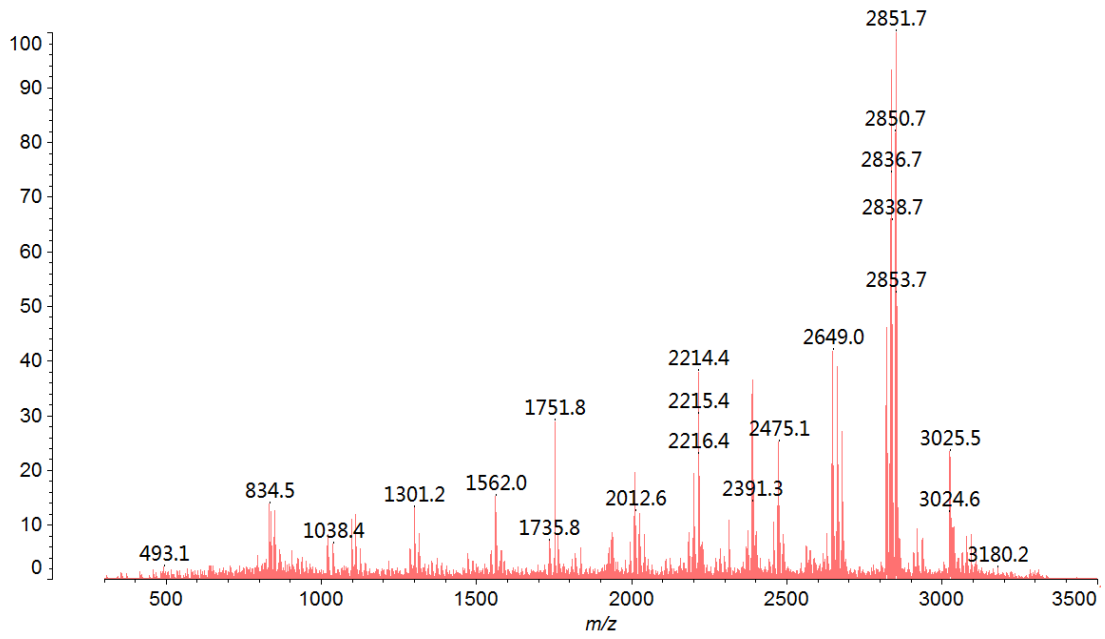


Figure S47, MALDI-TOF/TOF fragment ion spectra of the parent ions at m/z 3316

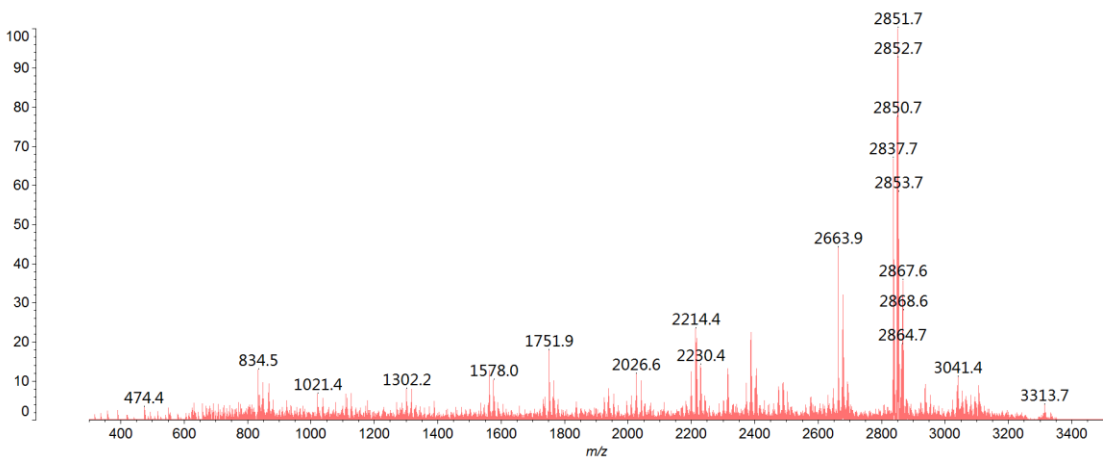


Figure S48, MALDI-TOF/TOF fragment ion spectra of the parent ions at m/z 3329

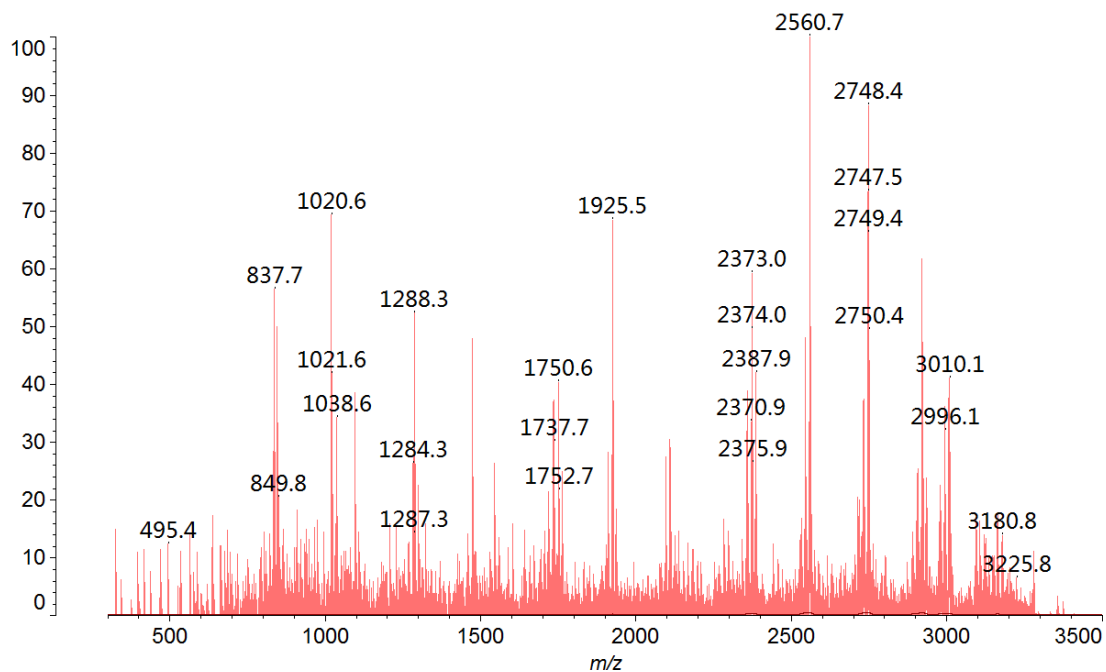


Figure S49, MALDI-TOF/TOF fragment ion spectra of the parent ions at m/z 3387

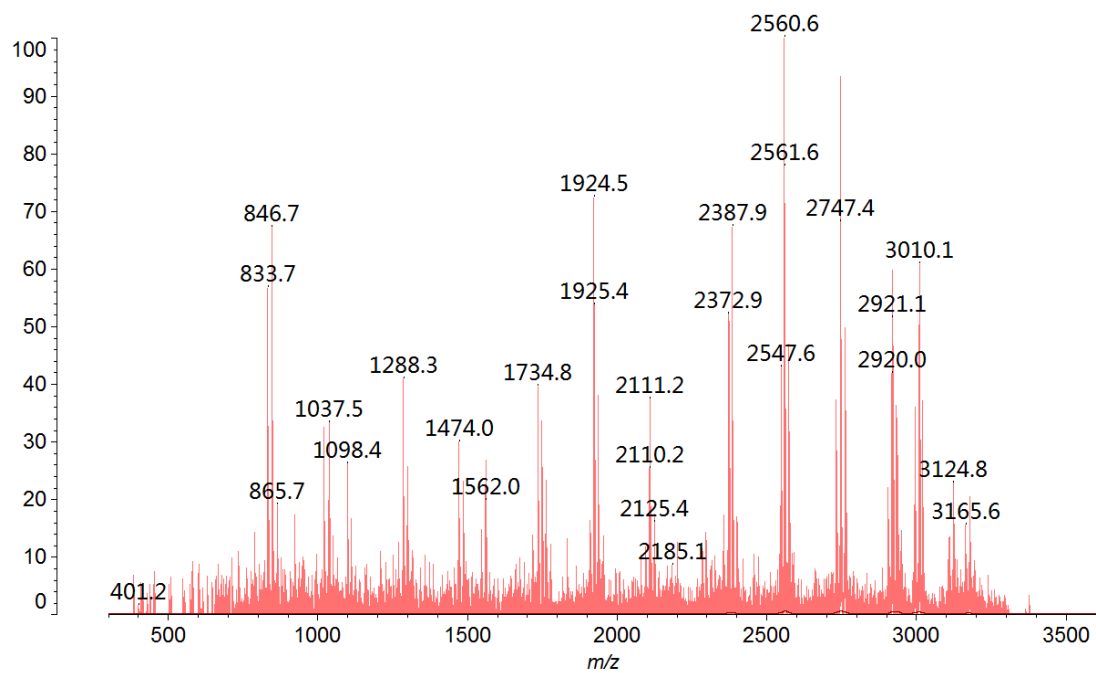


Figure S50, MALDI-TOF/TOF fragment ion spectra of the parent ions at m/z 3402

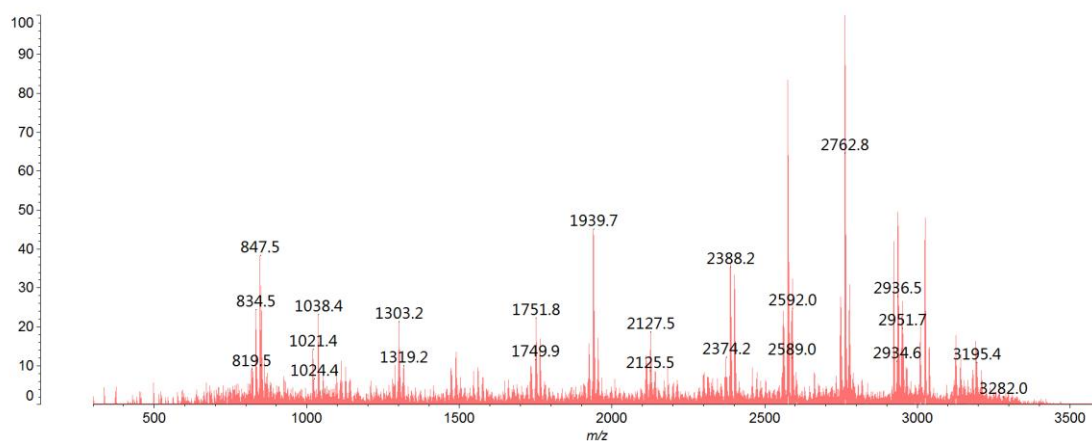


Figure S51, MALDI-TOF/TOF fragment ion spectra of the parent ions at m/z 3415

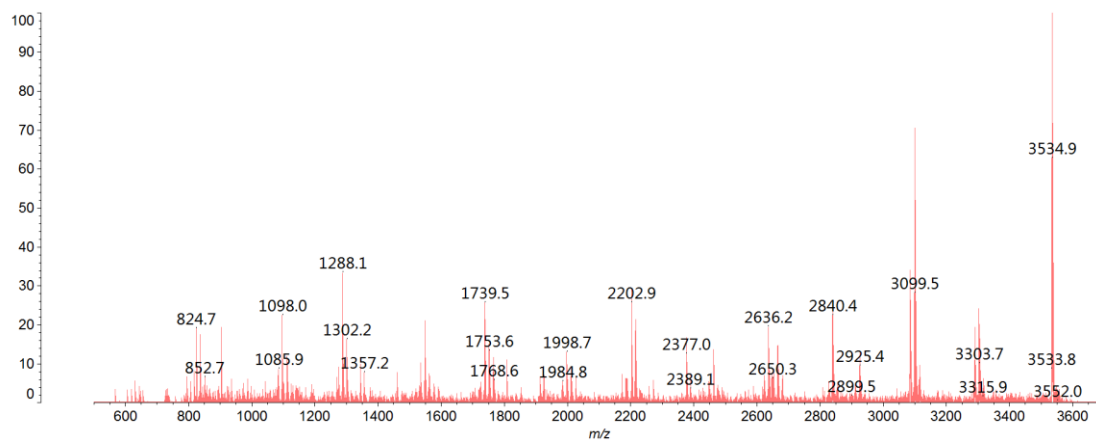


Figure S52, MALDI-TOF/TOF fragment ion spectra of the parent ions at m/z 3562

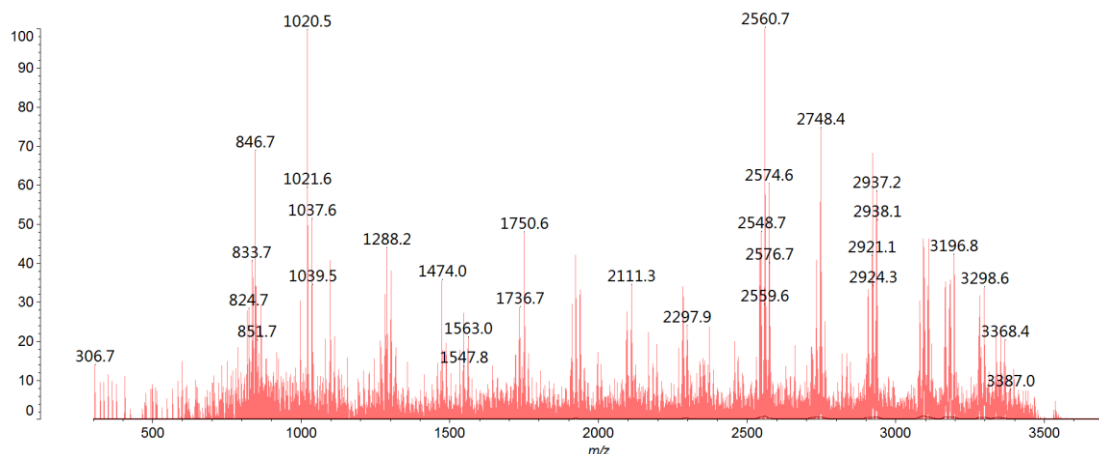


Figure S53, MALDI-TOF/TOF fragment ion spectra of the parent ions at m/z 3576

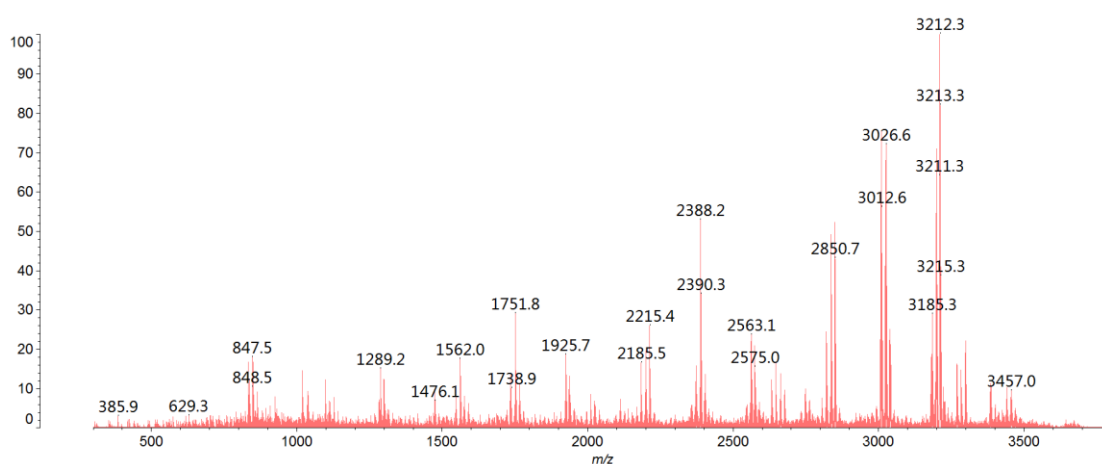


Figure S54, MALDI-TOF/TOF fragment ion spectra of the parent ions at m/z 3677

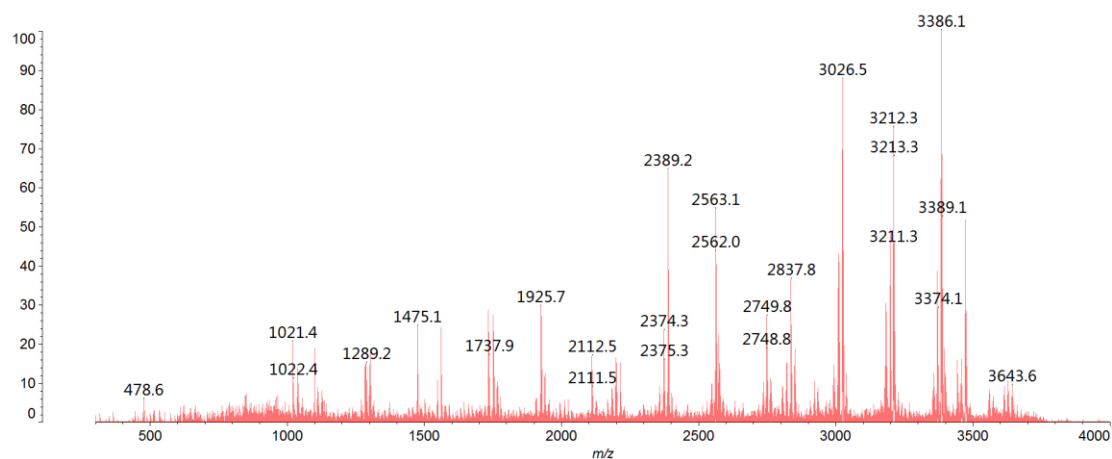


Figure S55, MALDI-TOF/TOF fragment ion spectra of the parent ions at m/z 3851

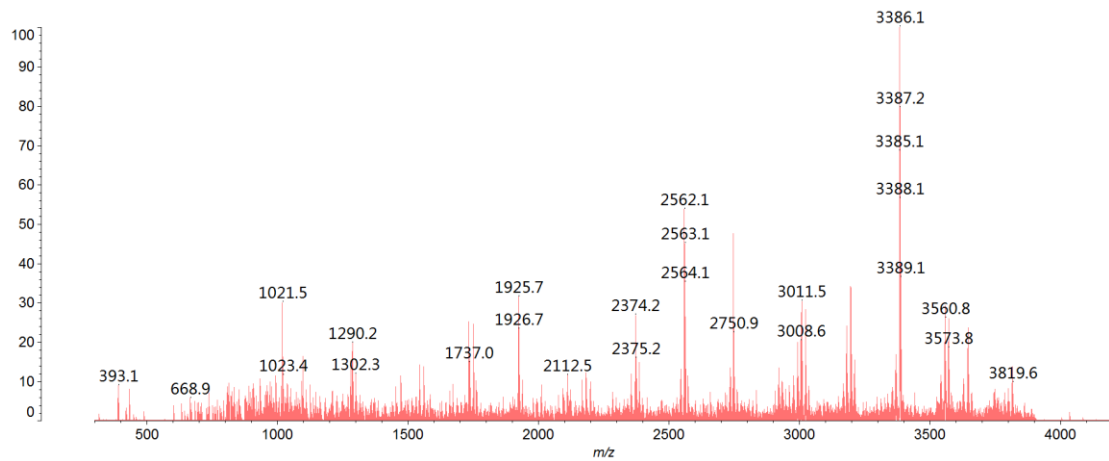


Figure S56, MALDI-TOF/TOF fragment ion spectra of the parent ions at m/z 4027

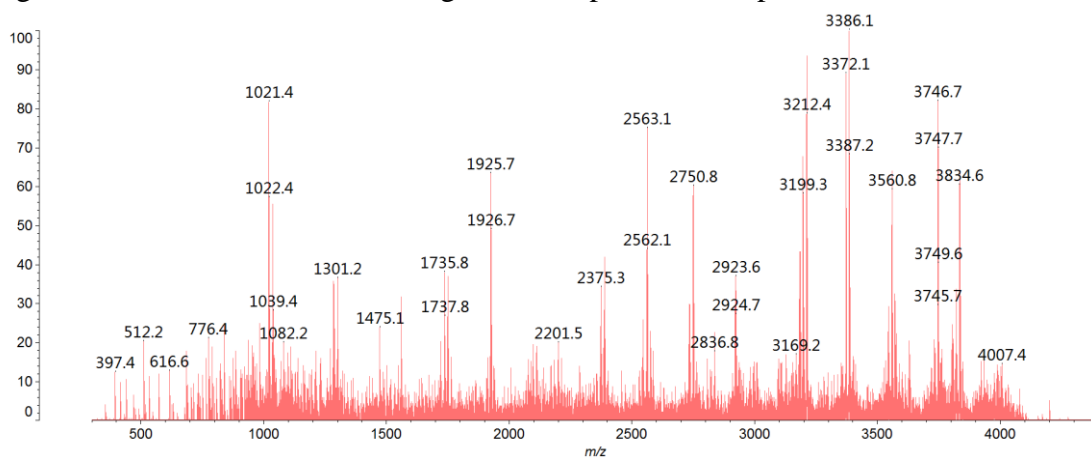


Figure S57, MALDI-TOF/TOF fragment ion spectra of the parent ions at m/z 4213

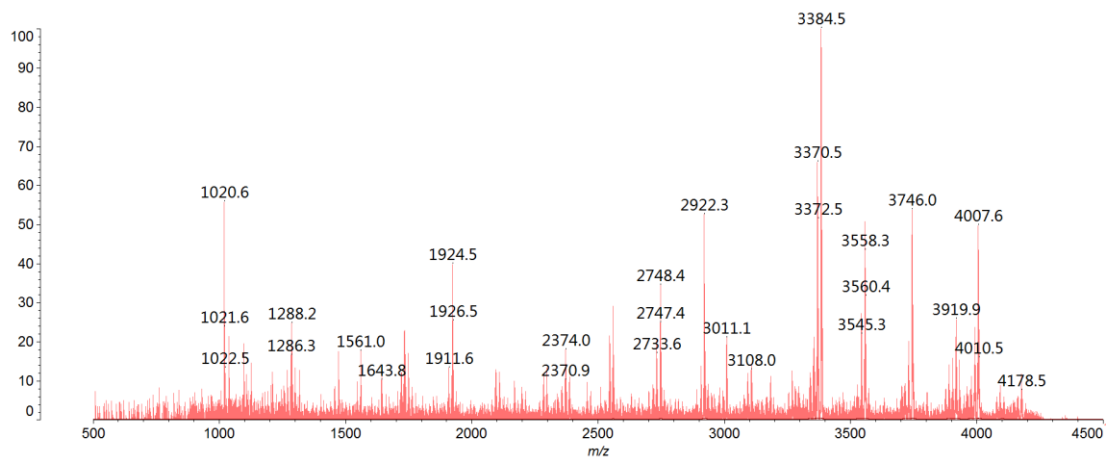


Figure S58, MALDI-TOF/TOF fragment ion spectra of the parent ions at m/z 4387

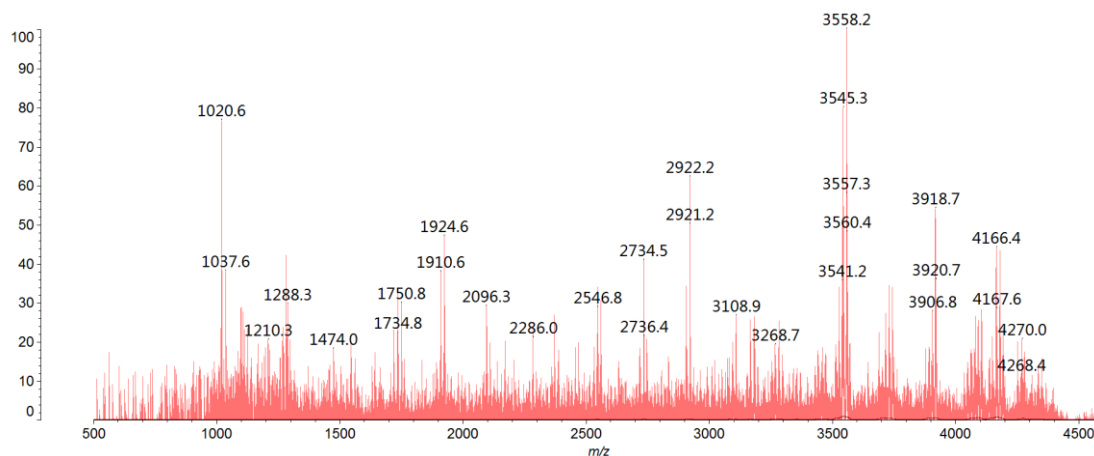


Figure S59, MALDI-TOF/TOF fragment ion spectra of the parent ions at m/z 4561

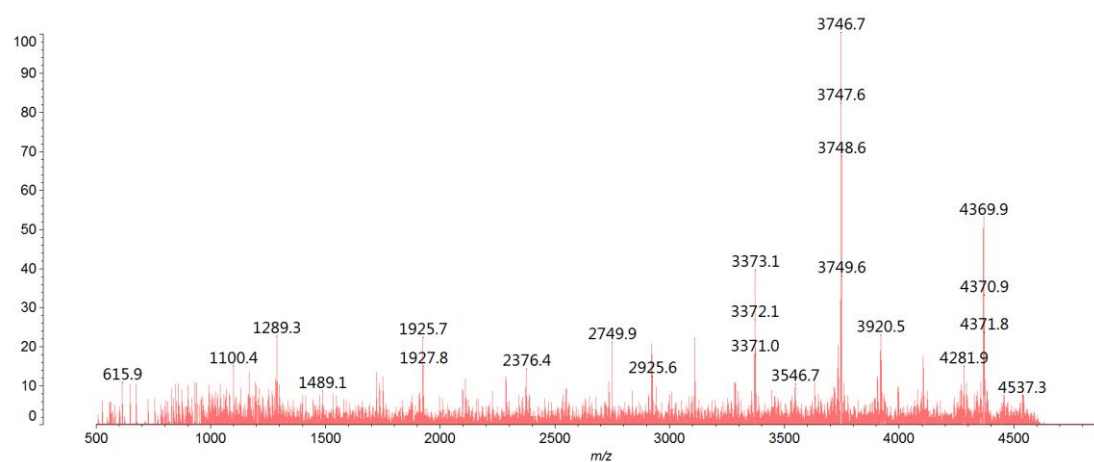


Figure S60, MALDI-TOF/TOF fragment ion spectra of the parent ions at m/z 4748

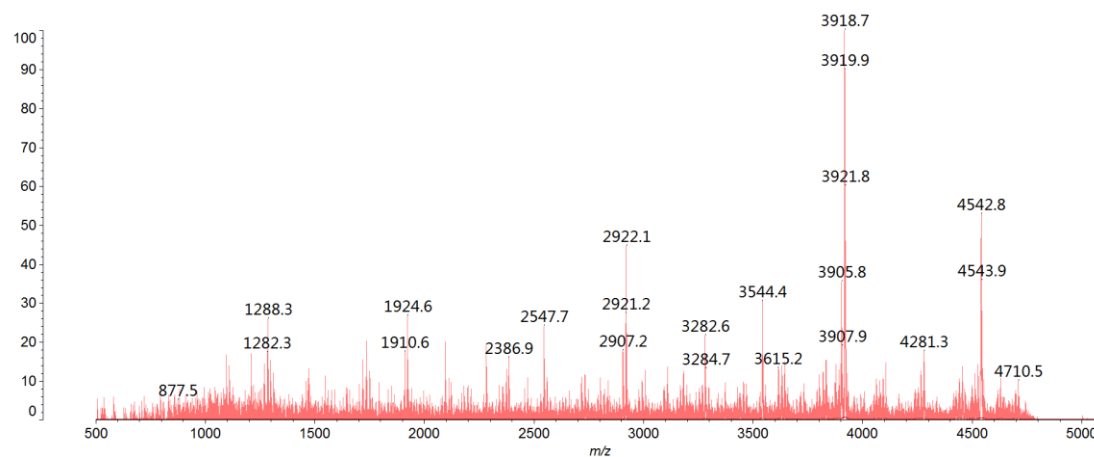


Figure S61, MALDI-TOF/TOF fragment ion spectra of the parent ions at m/z 4922