

SUPPLEMENTARY MATERIALS

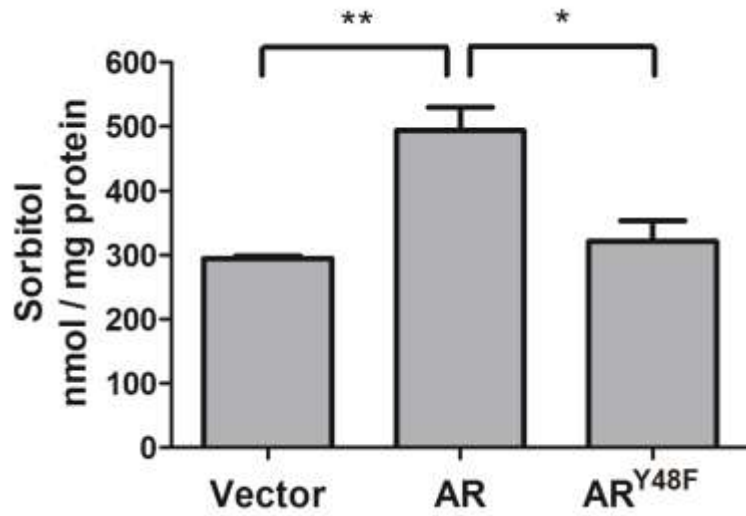


FIGURE S1. Overexpression of wild type AR, but not the active site mutant AR^{Y48F}, increases sorbitol accumulation in HLE B3 cells.

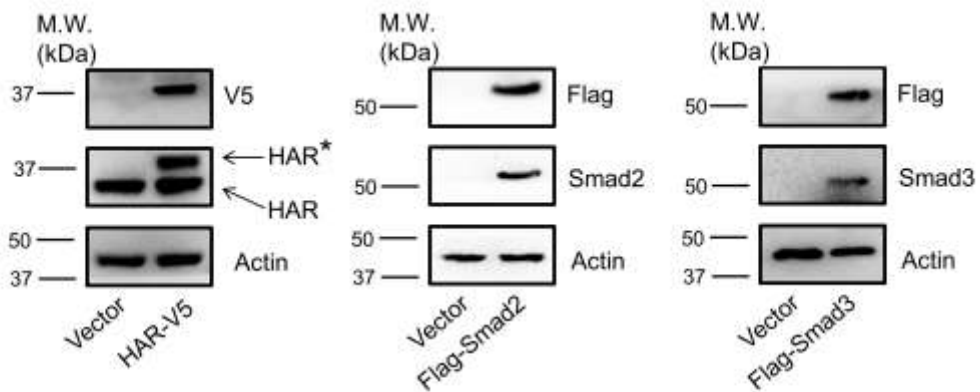


FIGURE S2. The HLE B3 cells were transfected with AR-V5, Flag-SMAD2 and Flag-SMAD3 plasmids and examined by V5, AR, Flag, SMAD2 and SMAD3 antibodies. AR* represents overexpressed AR.

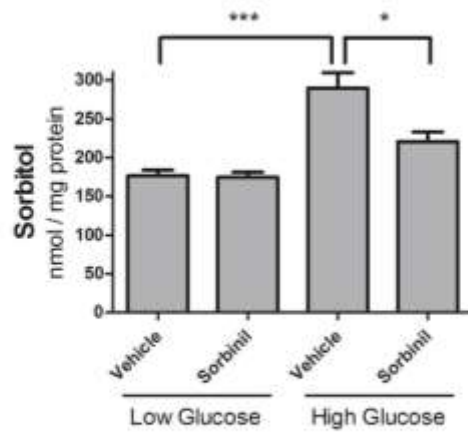


FIGURE S3. The inhibitory activity of Sorbinil was determined by sorbitol accumulation. HLE B3 cells were incubated with Sorbinil (10 μ M) in the presence of low glucose or high glucose medium. Data shown are means \pm SEM (N = 3). * P < 0.05; *** P < 0.005.

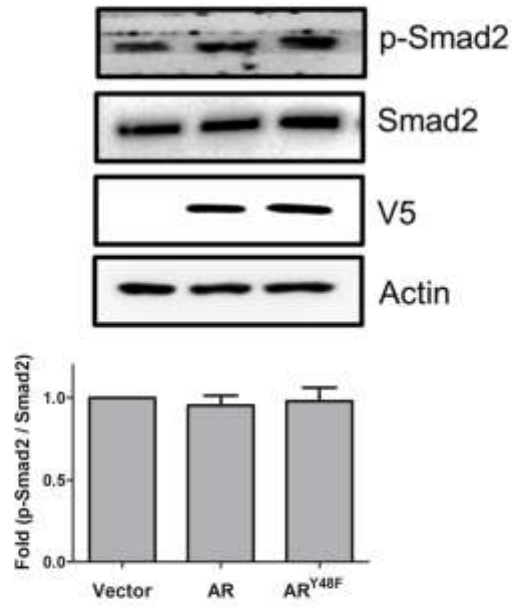


FIGURE S4. Overexpression of AR or AR^{Y48F} (AR*) does not enhance SMAD2 activation in the absence of TGF- β 2.

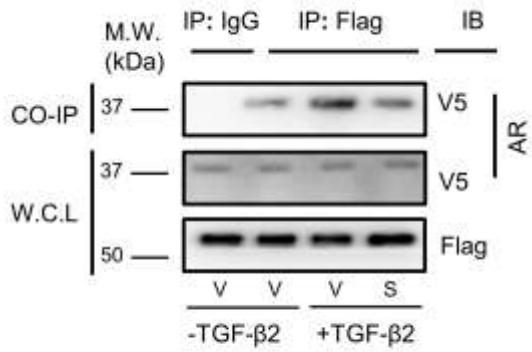


FIGURE S5. Sorbinil disrupts AR (conjugated with V5) and SMAD3 (conjugated with Flag) interaction.