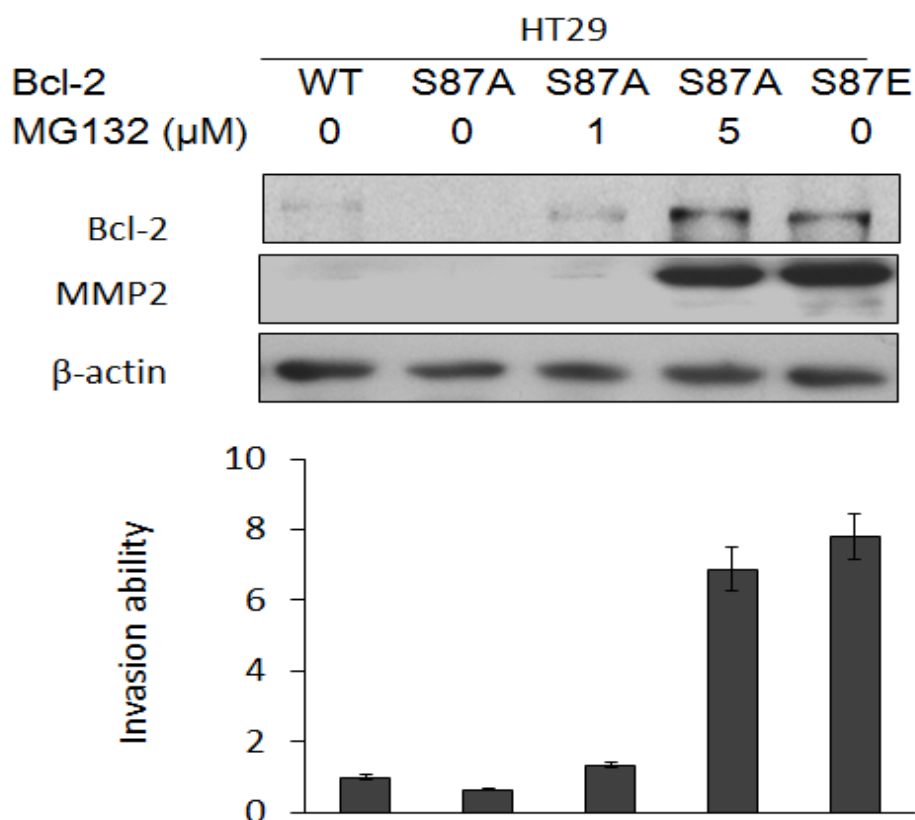


Paxillin promotes colorectal tumor invasion and poor patient outcomes via ERK-mediated stabilization of Bcl-2 protein by phosphorylation at Serine 87

Supplementary Material



Supplementary Figure 1: HT29 cells were transfected with WT-Bcl-2 or mutant Bcl-2-S87A and Bcl-2-S87E and then treated with 0~5 μ mol/L MG132 for an additional 5 hours. The cells were analyzed cell invasion capability by matrigel invasion assay.