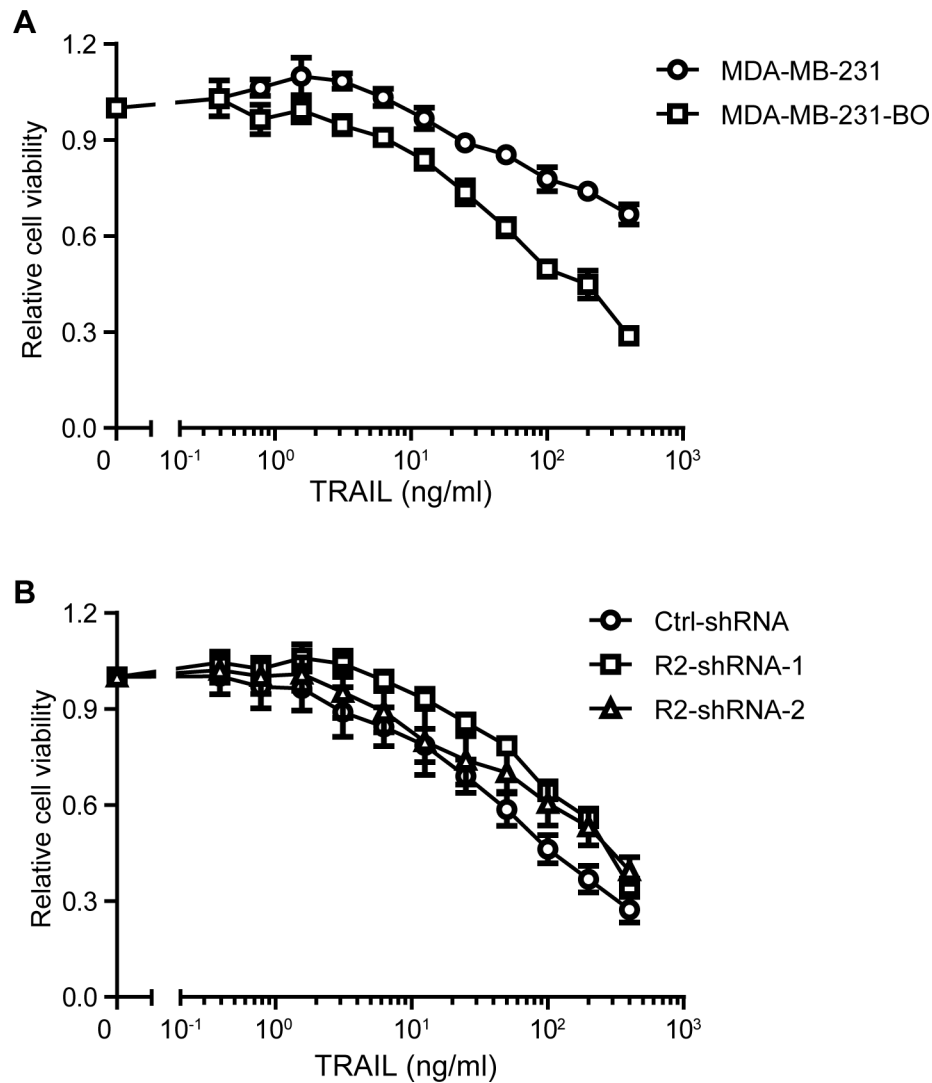


SUPPLEMENTARY FIGURE AND TABLES



Supplementary Figure S1: Elevated levels of TRAIL-R2 are associated with greater sensitivity to TRAIL-mediated cell death. 24 h after seeding (96-well plates, 1×10^4 cells/well), parental MDA-MB-231 and the bone-homing MDA-MB-231-BO (A), as well as control cells and cells expressing TRAIL-R2-shRNAs (B), were treated for 48 h with increasing concentrations of TRAIL. Cell viability was assessed by crystal violet staining as previously described (Siegmond *et al.*, (2005); Mol. Cell. Biol. 25, 6363). Graphs represent average values \pm SD. ($n = 6$).

Supplementary Table S1: Quantification of FACS analyses performed on TRAIL-R2 knockdown cells TRAIL-R2 knockdown cells (R2-shRNA-1 or R2-shRNA-2) were analyzed in regard to the expression of TRAIL-R1, TRAIL-R2, CXCR4 and EGFR by flow cytometry. Percent of stained cells (A), as well as staining intensities per cell (B), relative to non-specific antibody controls, were quantified and fold changes relative to control calculated. Values represent fold change \pm SD.

A	Non-permeabilized		Permeabilized	
	R2-shRNA-1	R2-shRNA-2	R2-shRNA-1	R2-shRNA-2
TRAIL-R2	0.54 \pm 0.14	0.43 \pm 0.10	0.24 \pm 0.04	0.23 \pm 0.06
TRAIL-R1	0.91 \pm 0.28	1.00 \pm 0.30	1.07 \pm 0.10	1.06 \pm 0.14
CXCR4	0.25 \pm 0.09	0.24 \pm 0.05	0.45 \pm 0.04	0.40 \pm 0.09
EGFR	1.01 \pm 0.05	0.99 \pm 0.05	1.00 \pm 0.04	1.00 \pm 0.04

B	Non-permeabilized		Permeabilized	
	R2-shRNA-1	R2-shRNA-2	R2-shRNA-1	R2-shRNA-2
TRAIL-R2	0.50 \pm 0.15	0.53 \pm 0.08	0.32 \pm 0.08	0.32 \pm 0.10
TRAIL-R1	0.95 \pm 0.22	0.94 \pm 0.22	0.94 \pm 0.16	0.99 \pm 0.15
CXCR4	0.36 \pm 0.10	0.45 \pm 0.10	0.30 \pm 0.08	0.28 \pm 0.08
EGFR	0.97 \pm 0.09	0.98 \pm 0.07	0.95 \pm 0.09	0.94 \pm 0.13

Supplementary Table S2: Quantification of FACS analyses performed on TRAIL-R2 overexpressing cells MDA-MB-231 cells overexpressing the long (R2-long) or short (R2-short) isoforms were analyzed by flow cytometry in regard to the expression of TRAIL-R2, CXCR4 and EGFR. Percent of stained cells (A), as well as staining intensities per cell (B), relative to non-specific antibody controls, were quantified and fold changes relative to control calculated. Values represent fold change \pm SD.

A	Non-permeabilized		Permeabilized	
	R2-long	R2-short	R2-long	R2-short
TRAIL-R2	1.32 \pm 0.24	1.62 \pm 0.42	1.87 \pm 0.24	1.99 \pm 0.42
CXCR4	2.15 \pm 0.14	2.39 \pm 0.28	1.80 \pm 0.24	1.79 \pm 0.29
EGFR	0.99 \pm 0.03	0.98 \pm 0.04	0.99 \pm 0.04	1.00 \pm 0.05

B	Non-permeabilized		Permeabilized	
	R2-long	R2-short	R2-long	R2-short
TRAIL-R2	1.48 \pm 0.26	1.67 \pm 0.32	2.42 \pm 0.28	2.33 \pm 0.37
CXCR4	1.43 \pm 0.25	1.49 \pm 0.24	2.38 \pm 0.44	2.37 \pm 0.28
EGFR	0.99 \pm 0.08	0.98 \pm 0.06	0.98 \pm 0.06	1.00 \pm 0.07