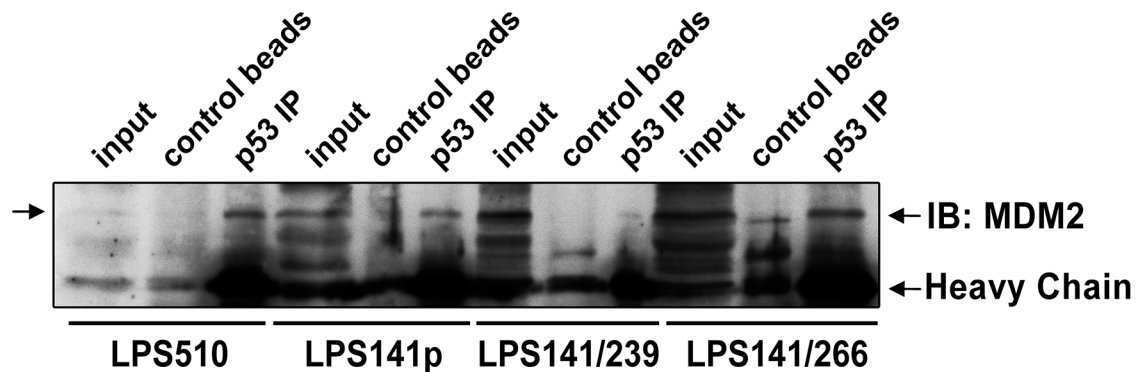


SUPPLEMENTARY FIGURE AND TABLES



Supplementary Figure 1: MDM2-p53 interaction evaluated by p53 immunoprecipitation followed by MDM2 immunoblotting.

Supplementary Table 1: Cell apoptosis analyses (%), as shown in Figure 3F, after LBH and SAHA treatment

Inhibitor	DMSO				LBH (0.25 μ M)				SAHA (5 μ M)			
	UL	UR	LL	LR	UL	UR	LL	LR	UL	UR	LL	LR
LPS141	5.8	8.6	83.3	2.4	4.6	17.1	75.1	3.2	10.3	17.1	71.3	1.3
LPS141/239	4.3	10.8	84.2	0.8	4.4	13.9	77.0	4.7	4.3	19.2	71.8	4.6
LPS141/266	4.2	10.2	80.9	4.7	3.3	9.8	81.0	5.9	3.7	15.5	72.3	8.5
LPS510	4.9	7.1	87.1	0.9	5.6	14.4	70.3	9.7	6.8	10.3	80.7	2.2
LPS778	9.3	7.4	77.6	5.7	8.1	22.7	54.6	14.6	5.7	23.0	55.3	16.1

Supplementary Table 2: Cell cycle analyses (%), as shown in Figure 3G, after LBH and SAHA treatment

Inhibitor	LPS141				LPS141/266				LPS141/239				LPS778				LPS510			
	G _{1/0}	G ₂	S	A	G _{1/0}	G ₂	S	A	G _{1/0}	G ₂	S	A	G _{1/0}	G ₂	S	A	G _{1/0}	G ₂	S	A
DMSO	61	27	12	0	66	28	6	0	57	33	9	1	66	20	13	1	46	28	10	16
LBH (0.25 μ M)	31	41	18	10	29	65	4	2	27	64	6	3	58	27	7	8	45	26	7	22
SAHA (5 μ M)	41	43	15	1	66	29	4	1	53	41	5	1	78	14	6	2	46	31	5	18

A indicates apoptosis before G1 peak.

Supplementary Table 3: Cell cycle analyses (%), as shown in Figure 4D, after *MDM2* and *p53 shRNA* treatment

Cell lines shRNAs	LPS141				LPS141/266				LPS141/239				LPS510			
	G _{1/0}	G ₂	S	A	G _{1/0}	G ₂	S	A	G _{1/0}	G ₂	S	A	G _{1/0}	G ₂	S	A
pLKO	49	31	17	3	74	22	4	0	62	23	12	3	62	6	13	19
MDM2 shRNA1	73	17	7	3	70	23	6	1	41	31	17	11	56	4	9	31
MDM2 shRNA2	69	18	8	5	67	29	4	0	51	26	15	8	52	6	7	35
p53 shRNA1	50	30	18	2	68	25	6	1	45	35	15	5	63	12	11	18
p53 shRNA2	51	30	16	3	67	28	5	0	38	34	16	12	59	13	6	22
MDM2 shRNA1 + p53 shRNA1	54	28	17	1	65	29	5	1	40	31	12	17	55	12	5	28

A indicates apoptosis before G1 peak.