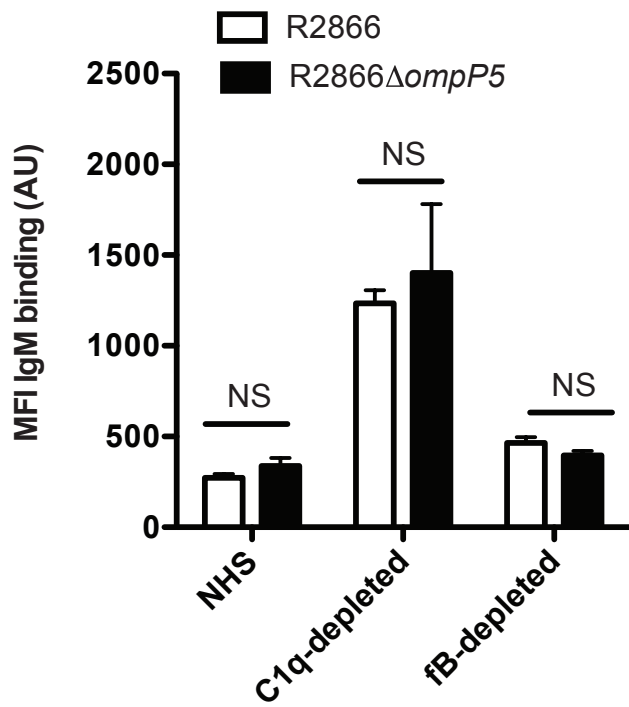
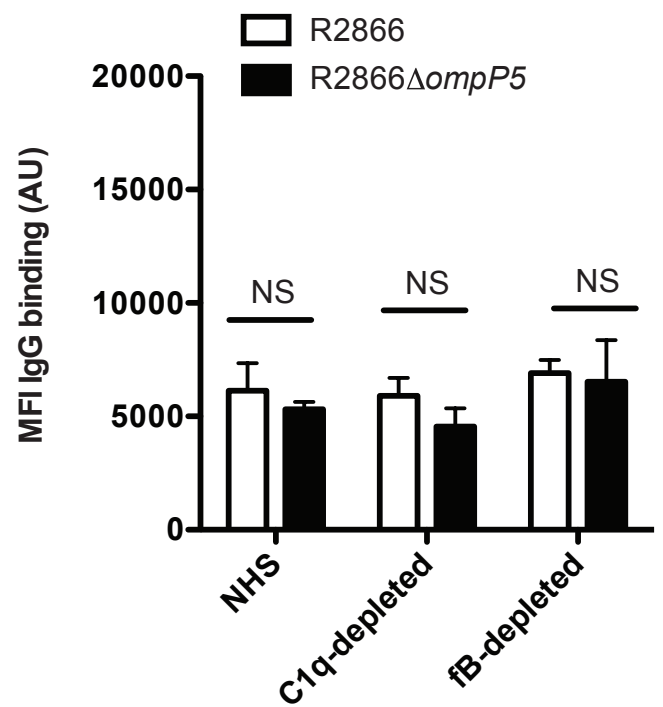


A**B**

Supplemental figure S1

Binding of IgG and IgM from NHS, C1q-depleted NHS and fB-depleted NHS. Binding of IgG (n=4) (A) or IgM (n=4) (B) to NTHi R2866 and R2866 Δ ompP5 mutant incubated for 15 minutes in 5% NHS, 5% C1q-depleted NHS or 5% fB-depleted NHS was determined by flow cytometry and compared by measurement of geometric mean fluorescence intensity (MFI) in arbitrary units (AU). Statistical significance was determined with an unpaired student *t* test. NS, not significant.