

Figure 1: Safety analysis in SKOV-3WT tumor bearing mice that had single and combination treatments of siRNA and PTX. (A) Body weight changes, (B) ALT levels, (C) AST levels. Safety analysis in SKOV-3_{TR} tumor bearing mice that had single and combination treatments of siRNA and PTX. (D) Body weight changes, (E) ALT levels, (F) AST levels.

Liver

PBS

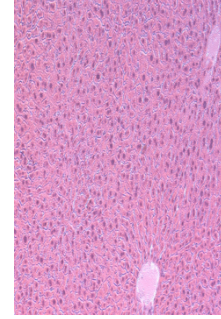
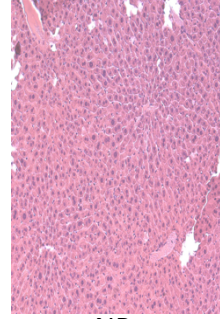
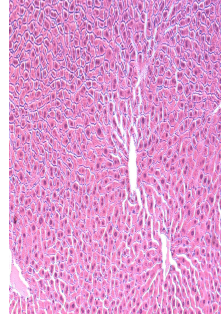
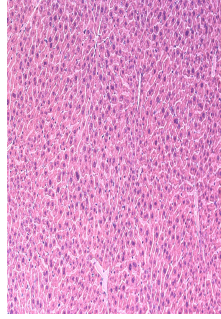
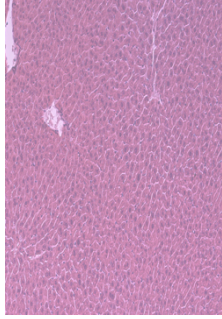
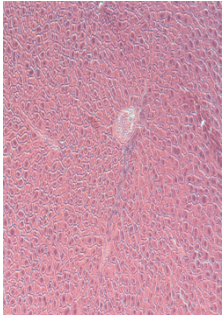
PTX solution

Naked
siMDR1

Naked
siPKM2

Scrambled HA-
PEI/PEG NP

Scrambled
dual targeted
NP



NP-MDR1
HA-PEI/PEG
NP

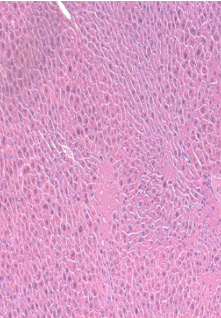
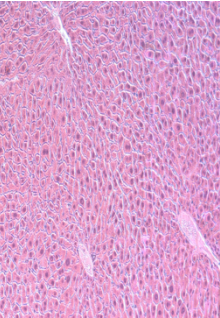
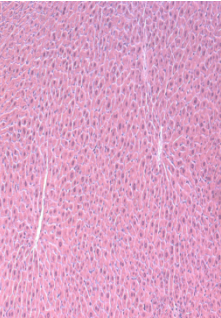
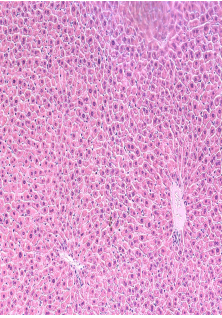
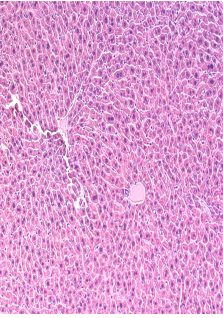
NP-MDR1
dual targeted
NP

NP-PKM2 HA-
PEI/PEG NP

NP-PKM2
dual targeted
NP

NP-
MDR1+PKM2
HA-PEI/PEG NP

NP-MDR1+PKM2
dual targeted NP



Kidney

PBS

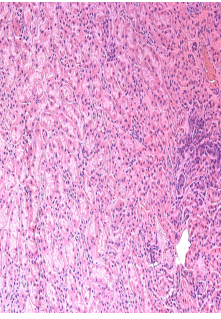
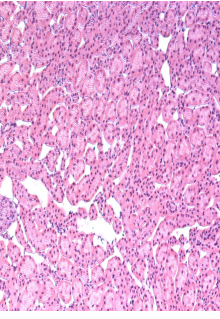
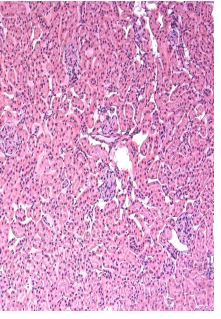
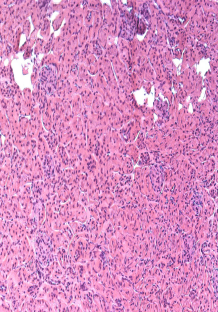
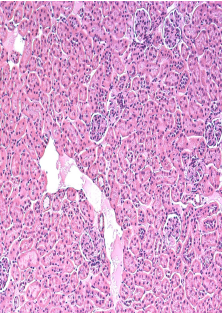
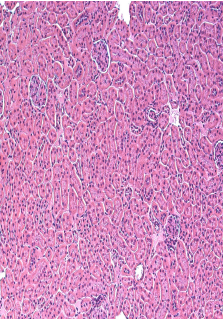
PTX solution

Naked
siMDR1

Naked
siPKM2

Scrambled HA-
PEI/PEG NP

Scrambled
dual targeted
NP



NP-MDR1
HA-PEI/PEG
NP

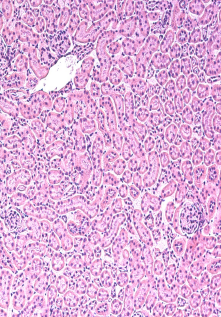
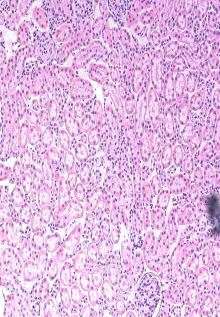
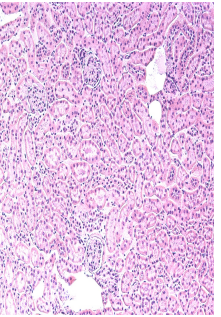
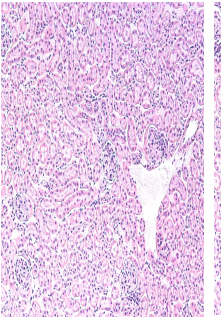
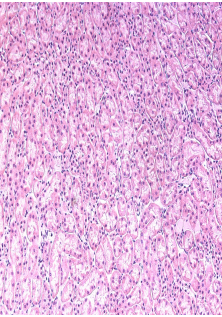
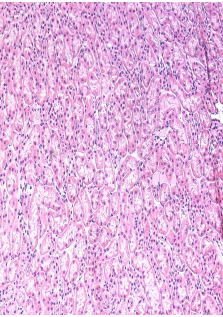
NP-MDR1
dual targeted
NP

NP-PKM2 HA-
PEI/PEG NP

NP-PKM2
dual targeted
NP

NP-
MDR1+PKM2
HA-PEI/PEG NP

NP-MDR1+PKM2
dual targeted NP



Spleen

PBS

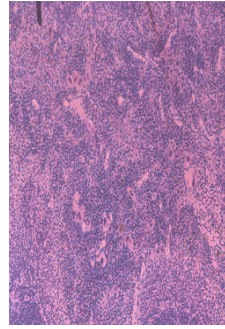
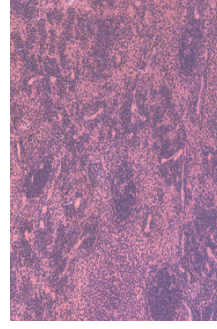
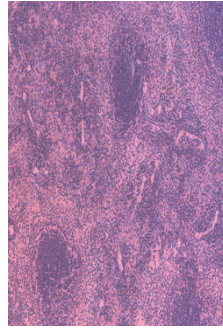
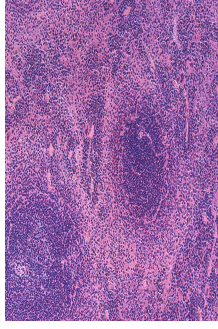
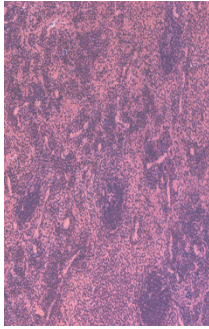
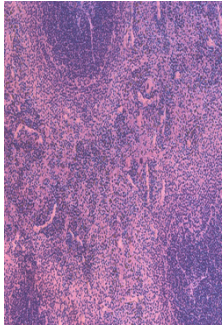
PTX solution

Naked
siMDR1

Naked
siPKM2

Scrambled HA-
PEI/PEG NP

Scrambled
dual targeted
NP



NP-MDR1
HA-PEI/PEG
NP

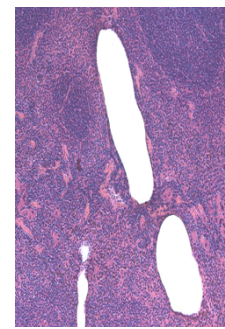
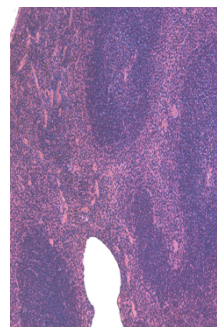
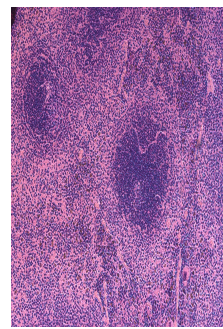
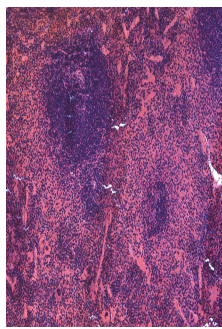
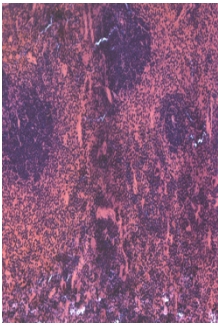
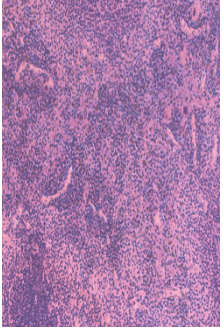
NP-MDR1
dual targeted
NP

NP-PKM2 HA-
PEI/PEG NP

NP-PKM2
dual targeted
NP

NP-
MDR1+PKM2
HA-PEI/PEG NP

NP-MDR1+PKM2
dual targeted NP



Liver

PBS

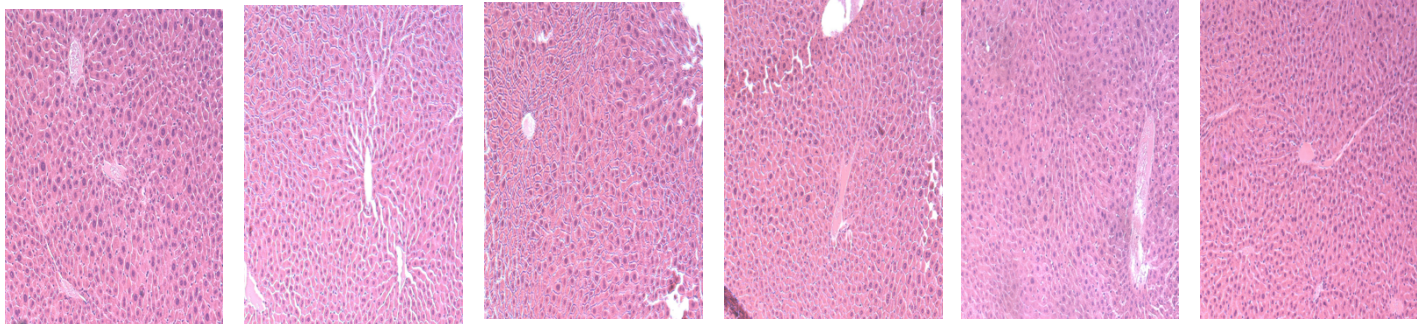
PTX solution

Scrambled dual
targeted NP

NP-MDR1
dual targeted
NP

NP-PKM2
dual targeted
NP

NP-MDR1+PKM2
dual targeted NP



Kidney

PBS

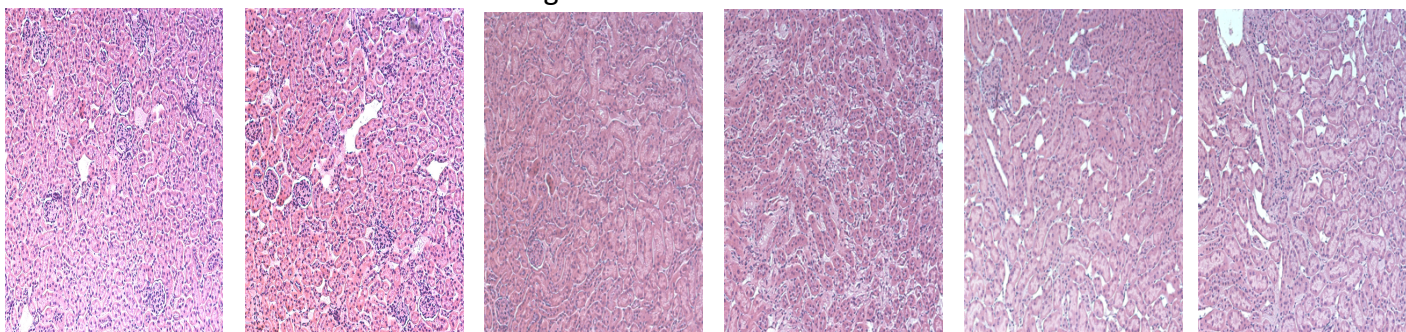
PTX solution

Scrambled dual
targeted NP

NP-MDR1
dual targeted
NP

NP-PKM2
dual targeted
NP

NP-MDR1+PKM2
dual targeted NP



Spleen

PBS

PTX solution

Scrambled dual
targeted NP

NP-MDR1
dual targeted
NP

NP-PKM2
dual targeted
NP

NP-MDR1+PKM2
dual targeted NP

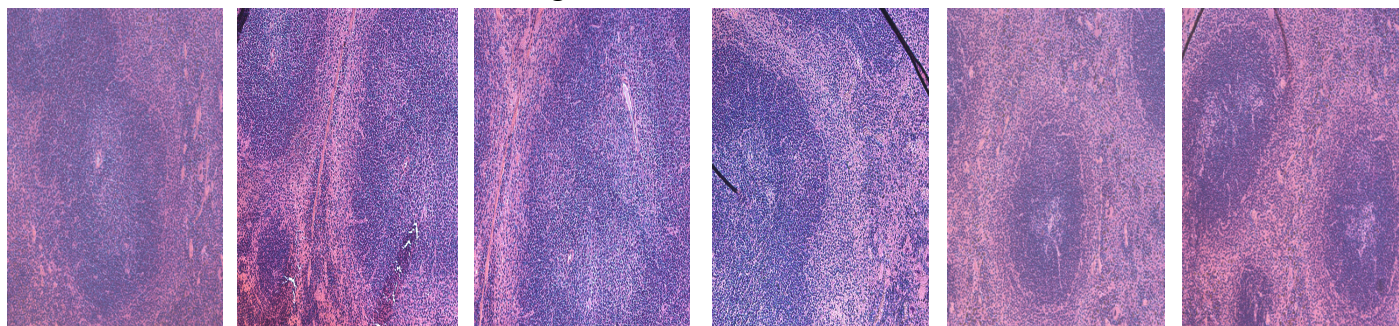


Figure 2: H&E staining for SKOV-3_{WT} tumor bearing mice that had single and combination treatments of siRNA and PTX (A) Liver tissue, (B) Kidney and (C) Spleen. H&E staining for SKOV-3_{TR} tumor bearing mice that had single and combination treatments of siRNA and PTX (A) Liver tissue, (B) Kidney and (C) Spleen.

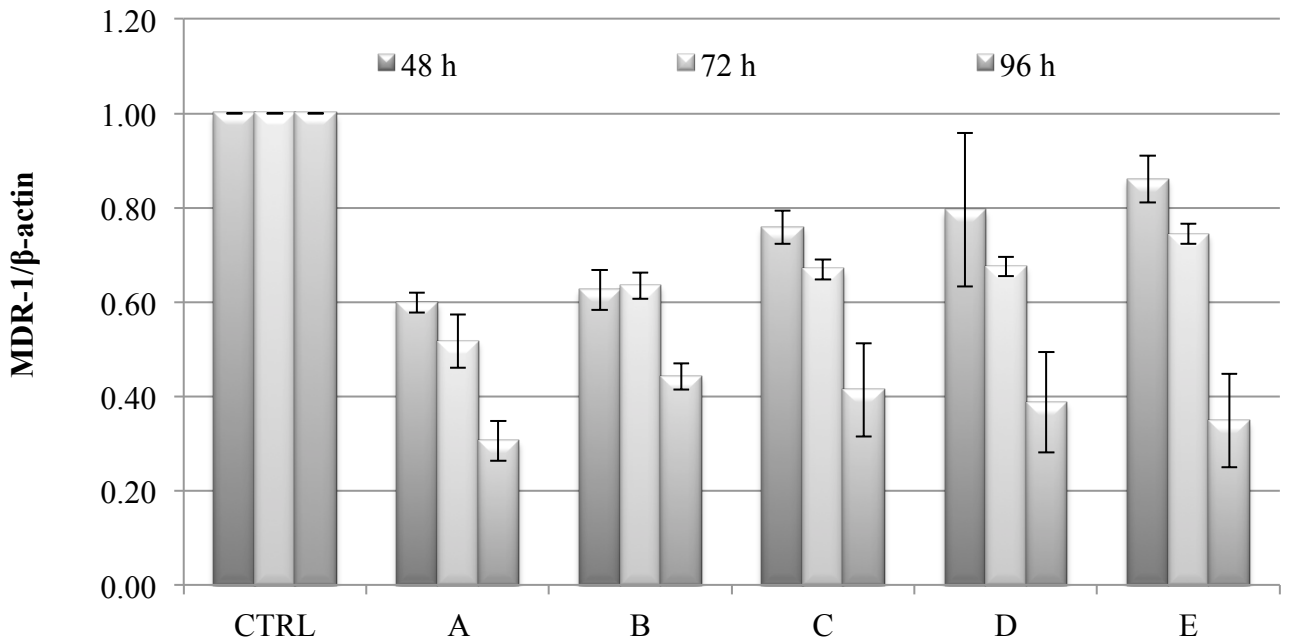


Figure 3: Alteration in HA-PEI/PEG:EGF ratio on siMDR-1 transfection efficiency. The three components (HA-PEI:PEG:EGF) were combined in the following ratio: A: 30:10:50, B: 30:20:40, C: 30:30:30, D:30:40:20, E: 30:50:10