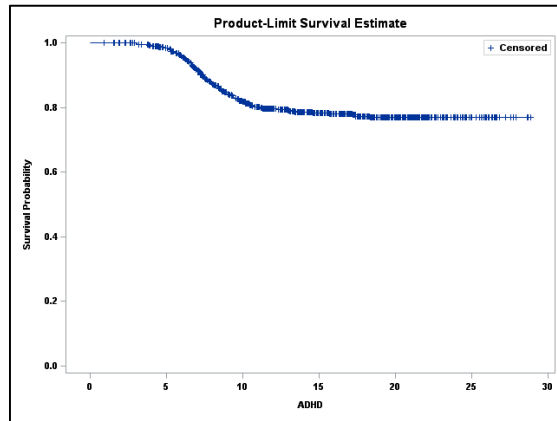
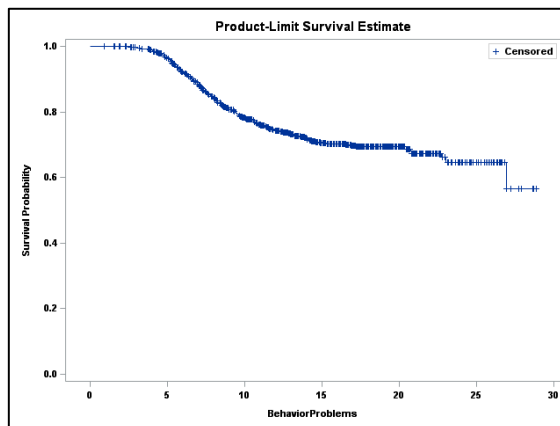


Supplemental Digital Content

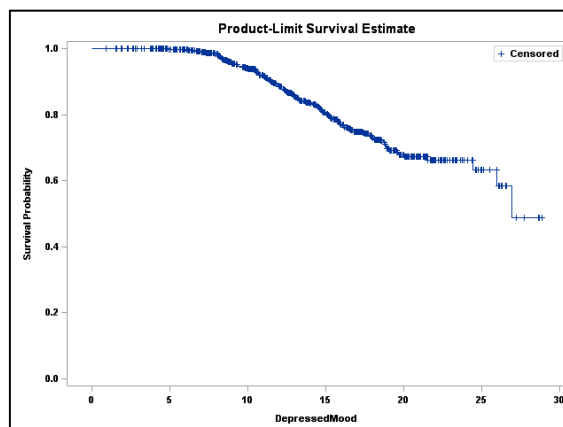
Figure 1. Kaplan Meier curves for onset of attention deficit/hyperactivity disorder (ADHD), behavior problems, and depressed mood for oldest affected male sample (N=765).



ADHD



Behavior problems



Depressed mood

Table 1. Kaplan-Meier results for onset of neurobehavioral concerns using oldest affected male sample and age recoded samples from the Muscular Dystrophy Surveillance, Tracking and Research Network (MD STARnet), 1982-2011 (n=765)

<i>Models</i>	<i>Count concerns</i>	<i>Censored n (%)¹</i>	<i>% without concern</i>	<i>% with concern</i>
Oldest Affected Male Sample				
ADHD	146	619 (81)	77	23
Behavior problems	202	563 (74)	57	43
Depressed mood	143	622 (81)	49	51
Age of Risk Recoded Sample²				
ADHD	141	624 (82)	78	22
Behavior problems	185	580 (76)	72	28
Depressed mood	135	630 (82%)	70	30
General Population Recoded Sample³				
ADHD	146	619 (81)	77	23
Behavior problems	195	570 (75)	70	30
Depressed mood	123	642 (84)	75	25

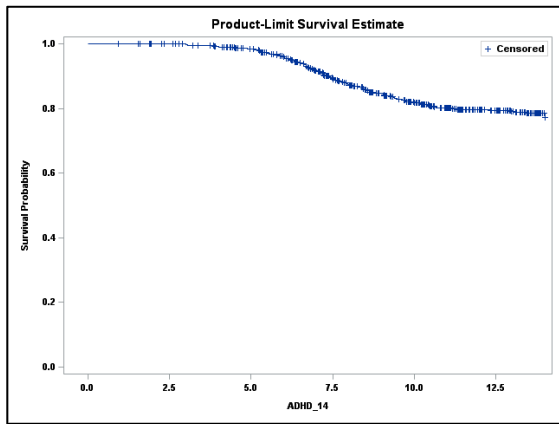
ADHD=attention deficit/hyperactivity disorder.

¹ Censored may be due to no documentation of neurobehavioral concern at last health encounter, no clinical follow-up in that year, or case deceased.

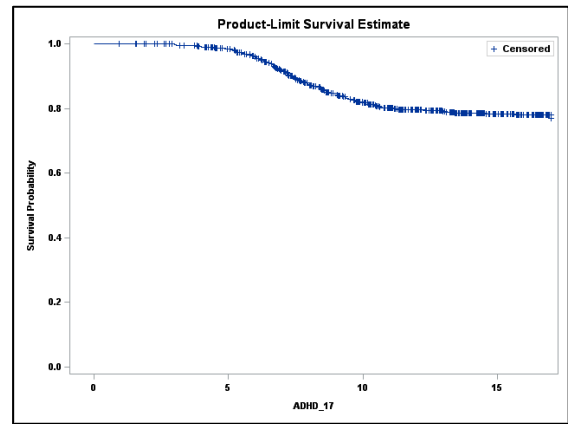
² Recoded ages determined from maximum age of risk for onset of neurobehavioral concerns. Age at onset of neurobehavioral concern was used for those with documented concerns, and age at last visit was used for those without documented neurobehavioral concerns (i.e., ages on or after the 14th birthday were coded as 14 for ADHD and behavior problems; ages on or after the 19th birthday were coded as 19 for depressed mood).

³ Recoded age determined from general population sample ages. Age at onset of neurobehavioral concern was used for those with documented neurobehavioral concerns, and age at last visit was used for those without neurobehavioral concerns (i.e., ages on or after the 17th birthday were coded as 17 for all neurobehavioral concerns).

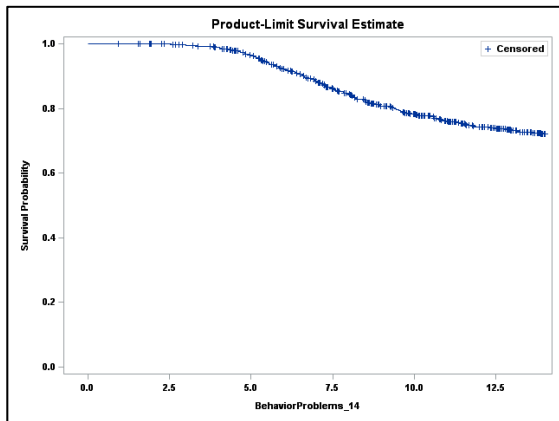
Figure 2. Kaplan Meier curves for onset of attention deficit/hyperactivity disorder (ADHD), behavior problems, and depressed mood using age-recoded samples.



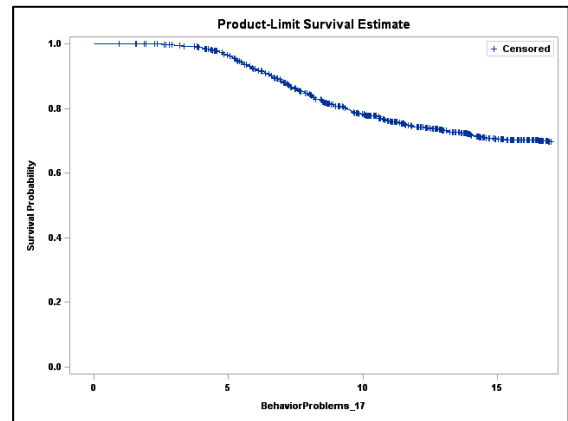
ADHD-‘Age at risk’ recoded sample



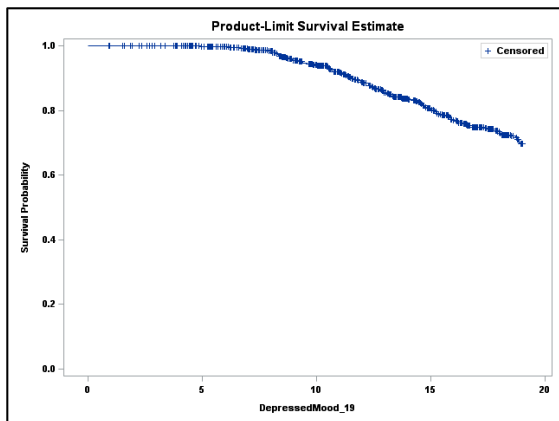
ADHD-‘General population’ recoded sample



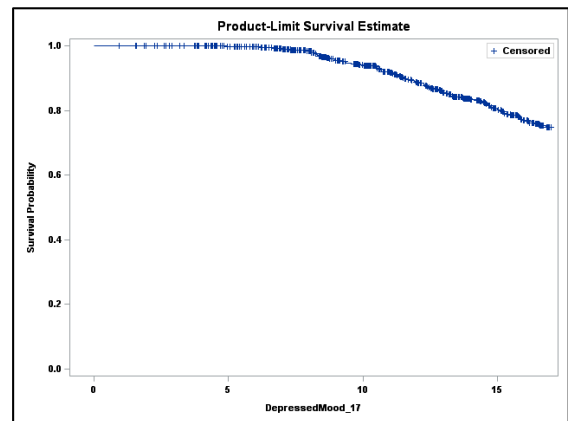
Behavior problems-‘Age at risk’ recoded sample



Behavior problems-‘General population’ recoded sample

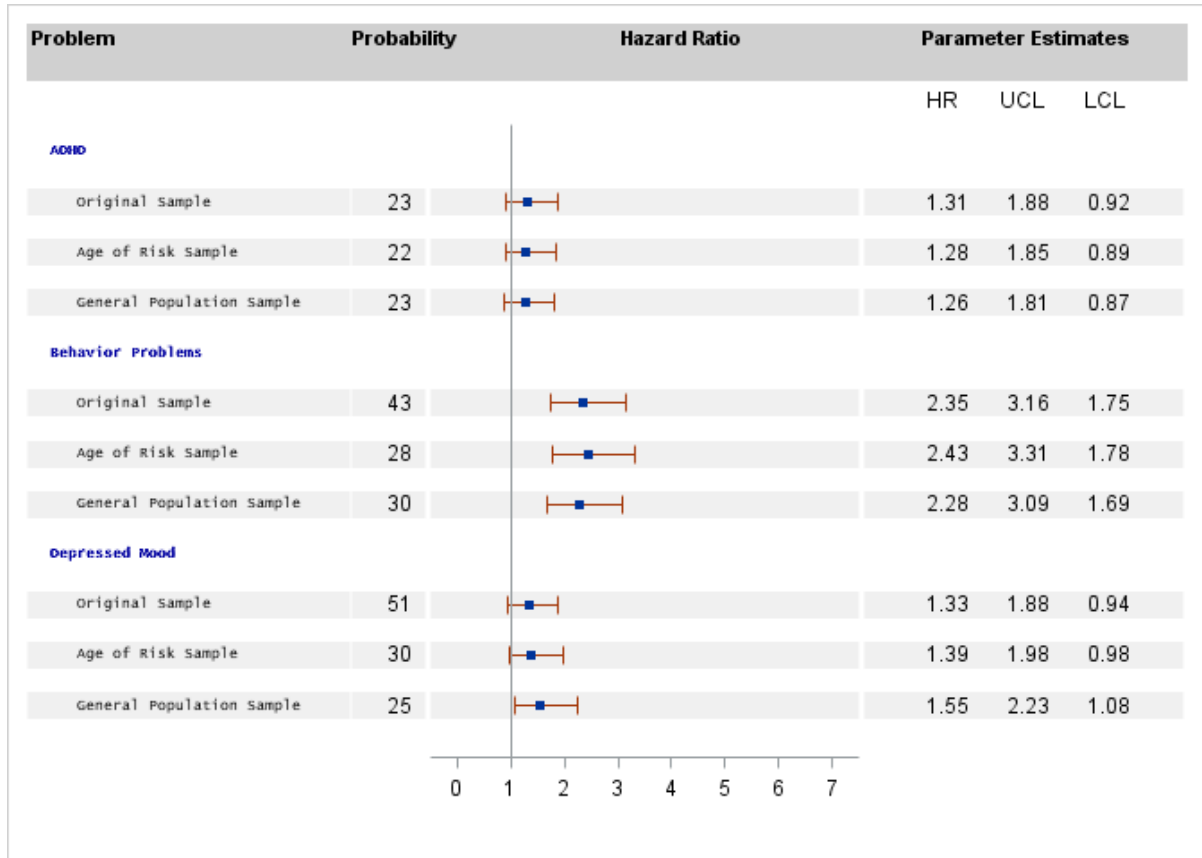


Depressed mood-‘Age at risk’ recoded sample



Depressed mood-‘General population’ recoded sample

Figure 3. Comparison of crude hazard ratios (HR)s and 95% confidence limits (CL) for associations between corticosteroids¹ and neurobehavioral outcomes, estimated from the oldest affected male sample and age of risk² and general population³ recoded samples from the Muscular Dystrophy Surveillance, Tracking and Research Network (MD STARnet), 1982-2011 (n=765)



ADHD=attention deficit/hyperactivity disorder. UCL=upper confidence limit. LCL=lower confidence limit.

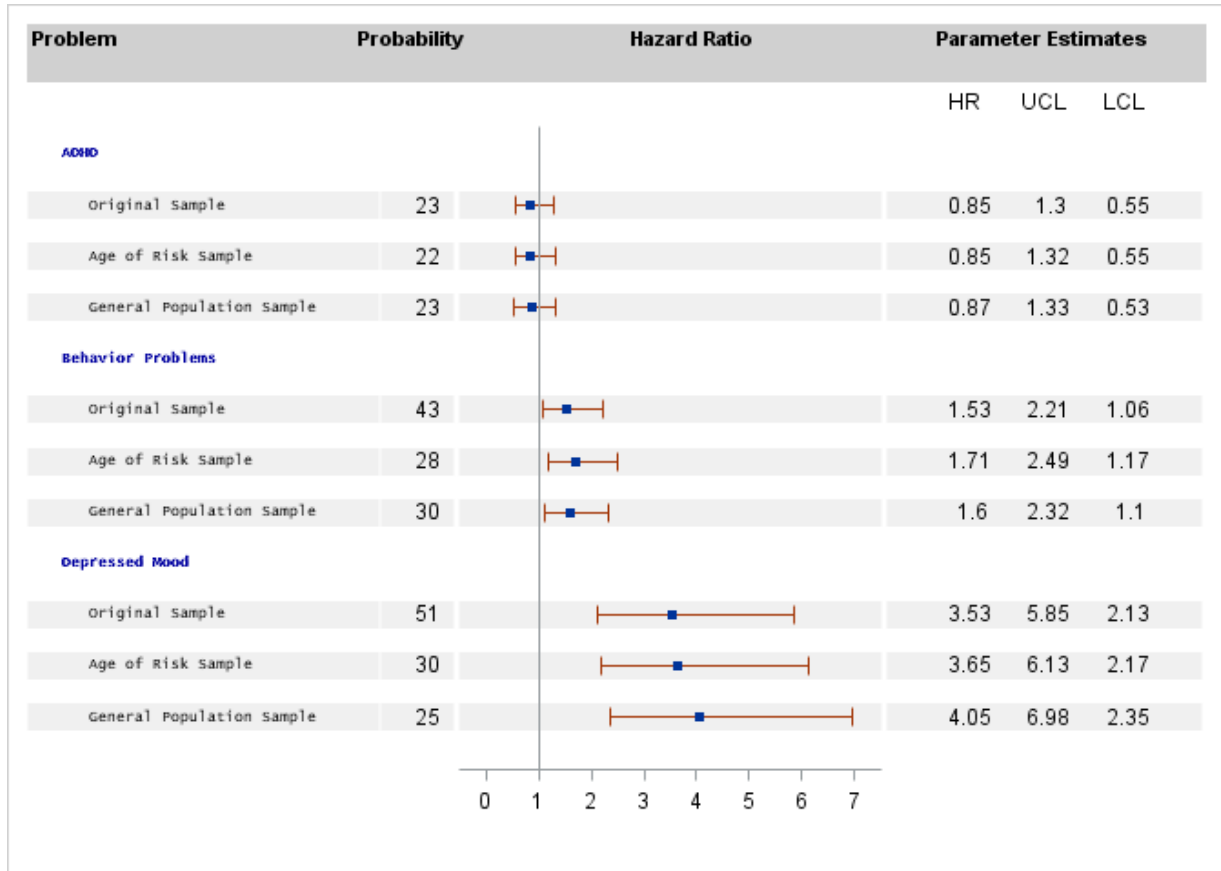
¹Corticosteroid use defined as at least one day of use within a year.

²Recoded ages determined from maximum age of risk for onset of neurobehavioral concerns. Age at onset of neurobehavioral concern was used for those with documented concerns, and age at last visit was used for those without documented neurobehavioral concerns (i.e., ages on or after the 14th birthday were coded as 14 for ADHD and behavior problems; ages on or after the 19th birthday were coded as 19 for depressed mood).

³Recoded age determined from general population sample ages. Age at onset of neurobehavioral concern was used for those with documented neurobehavioral concerns, and age at last visit was used

for those without neurobehavioral concerns (i.e., ages on or after the 17th birthday were coded as 17 for all neurobehavioral concerns).

Figure 4. Comparison of crude hazard ratios (HR)s and 95% confidence limits (CL) for associations between mobility assistive device use and neurobehavioral concerns, estimated from the oldest affected male sample and age of risk¹ and general population² recoded samples from the Muscular Dystrophy Surveillance, Tracking and Research Network (MD STARnet) , 1982-2011 (n=765)



ADHD=attention deficit/hyperactivity disorder. UCL=upper confidence limit. LCL=lower confidence limit.

¹ Recoded ages determined from maximum age of risk for onset of neurobehavioral concerns. Age at onset of neurobehavioral concern was used for those with documented concerns, and age at last visit was used for those without documented neurobehavioral concerns (i.e., ages on or after the 14th birthday were coded as 14 for ADHD and behavior concerns; ages on or after the 19th birthday were coded as 19 for depressed mood).

² Recoded age determined from general population sample ages. Age at onset of neurobehavioral problem was used for those with documented neurobehavioral concerns, and age at last visit was used for those without neurobehavioral concerns (i.e., ages on or after the 17th birthday were coded as 17 for all neurobehavioral concerns).