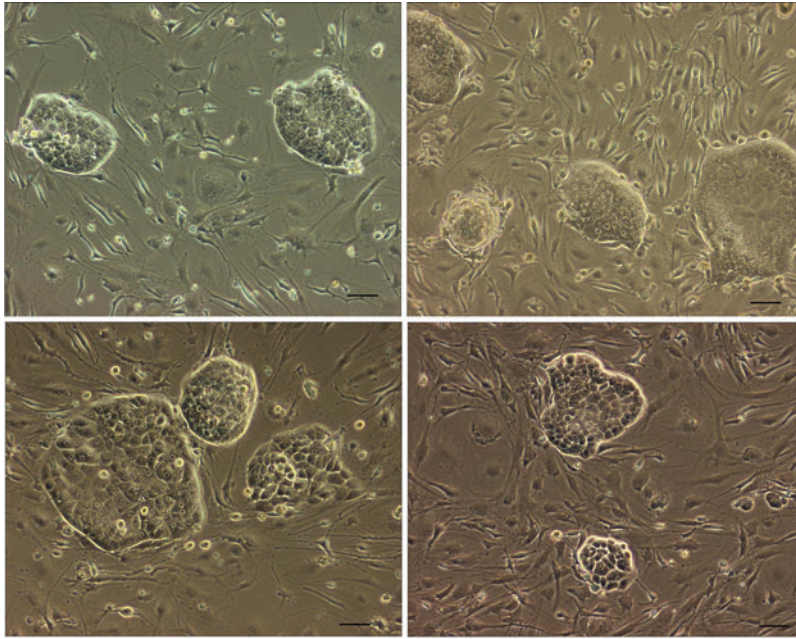


## Supplementary Data



**SUPPLEMENTARY FIG. S1.** Clonogenic culture of CD34+ liver cancer stem cells (LCSC) on feeder cells. CD34+ LCSC formed colonies with round and packed morphology when culturing on mouse embryonic fibroblast feeder cells under our defined culture conditions, and multiple colonies and multiple morphologies were observed. Scale bar: 100  $\mu\text{m}$ .