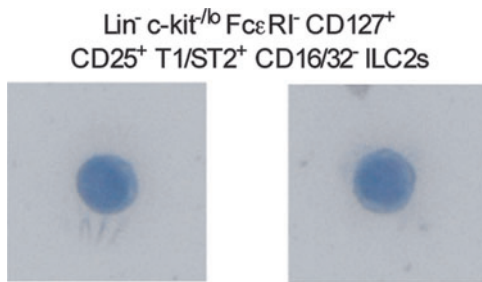


Supplementary Data



SUPPLEMENTARY FIG. S1. Lin⁻ c-kit^{lo} FcεRI⁻ CD127⁺ CD25⁺ T1/ST2⁺ CD16/32⁻ ILC2s were sorted and stained with May-Grünwald Giemsa. Original magnification, 40×. The width of each photo corresponds to 32 μm. Representative photos from one out of two experiments are shown. ILC2s, innate lymphoid cells of type 2.