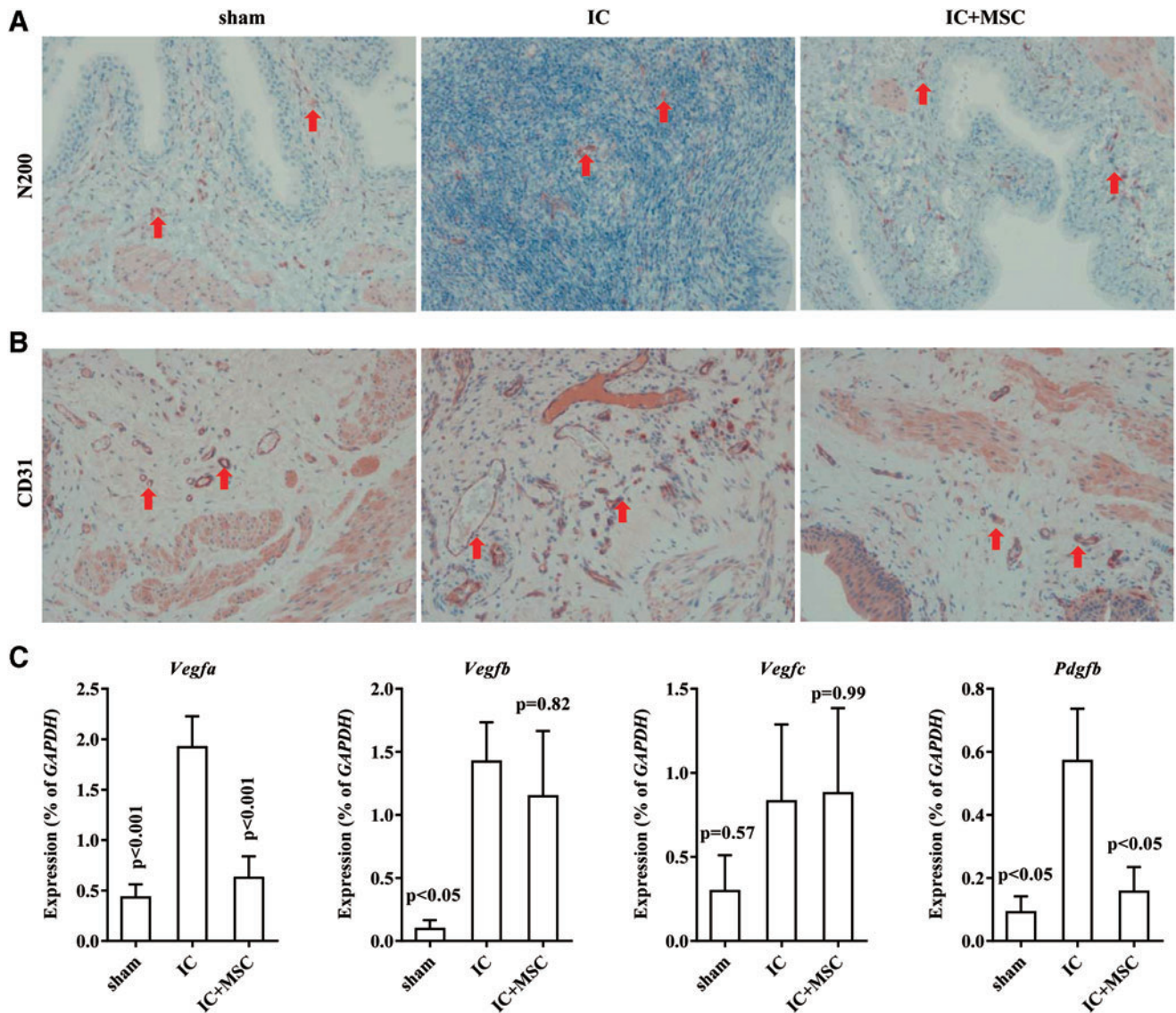


## Supplementary Data



**SUPPLEMENTARY FIG. S1.** Immunostaining of the N200<sup>+</sup> neurofilaments (**A**; magnification  $\times 400$ ) and CD31<sup>+</sup> vessels (**B**; magnification  $\times 200$ ) in the indicated bladder tissues. *Arrows* indicated positively stained regions. IC, interstitial cystitis; MSC, mesenchymal stem cell. (**C**) RQ-PCR analysis of *Vegfa*, *Vegfb*, *Vegfc*, and *Pdgfb* in the indicated bladder tissues. The expression level of the rabbit transcript of indicated genes is represented as % *Gapdh* (as determined using five or more independent experiments) and is shown as the mean  $\pm$  SEM ( $P < 0.05$ ,  $P < 0.01$  in comparison with IC group bladders, one-way ANOVA with Bonferroni post-test). ANOVA, analysis of variance; RQ-PCR, real-time quantitative polymerase chain reaction.