

Supplementary Materials

Materials and methods

Table 1. Primer Sequences

Primer sequence 5'-3'	Name by family alignment	Final Conc. In μM
GARGATRTCCTGYAAGGCTTC	IGHV1	1.8
GAAKVAGTCAGGACCTRRCT	IGHV2	4.8
CTGGAGGTGGCCTGGTGCAGCC	IGHV4	0.2
AGCCTGGAGGGTCCCTGAA	IGHV5	0.2
GWGWCWGGAGGAGGCTTRGT	IGHV6	3.6
TCTGRAGGAGGCTTGGTACAG	IGHV7	0.4
SAGTCTGGCCCTGGKATAKTGC	IGHV8	1.68
ACAGATCCAGTTGGTGCAGT	IGHV9	0.2
CTGGTGGAGGATTGGTGCAGC	IGHV10	0.2
GTGCAGCTGTTGGAGACTGGAG	IGHV11	0.2
CAGATKAGCTTMAGGAGTC	IGHV12	0.2
AGGTRCAGCTKGTAGAGACMG	IGHV13	0.2
GAGGTTCACTGCAGCAGT	IGHV14	0.2
CAGGTTACCTACAACAG	IGHV15	0.2
GTGAGGTGCAGCTGGTGGGA	IGHV16	0.2

Primer sequence 5'-3'	Name by family alignment	Final Conc. in μM
GTGATGTTGTGATGACCCARACTCC	IGKV1.1	0.4
CWGTCACTYYTGARMRTCAG	IGKV2	6
TKSTCTGGGTTCCAGGTRAG	IGKV3	1.6
AWTGTKCTCACCCAGTCTCC	IGKV4.1	0.8
CCACASAARCTCAGGGAAAR	IGKV5	1.6
RYATTGTRATGACCCARWCTC	IGKV6.1	6
GGTYACTATSAGCTGYAART	IGKV8	1.6
CCAGATGTGACATCCAGATG	IGKV9	0.2
GATATCCAGATGACACAGACTAC	IGKV10.1	0.2
ATGTGACATYCAGATGACCC	IGKV12	0.4
GACATCCAGATGACACAATCTTC	IGKV13.1	0.2
CAGGACTCAGCATGGACATGA	IGKV14.1	0.2
GAAACAACACTGTGACCCAGTCTCC	IGKV17	0.2

Primer sequence 5'-3'	Name	Final Conc. in μM
TGACAGATGGGGSTGTYGTTTTGGC	Mouse JH1	1
TGACAGATGGGGCTGTTGTTGT	Mouse JH2	1
TGACATTTGGGAAGGACTGACTCTC	Mouse JH3	1
TTTKATTTCCAGYTTGGTCCC	Mouse JK1	1
TTTTATTTCCAACCTTTGTCCC	Mouse JK2	1
TTTCAGCTCCAGCTTGGTCCC	Mouse JK3	1

Table 1: Primer sequences and final concentration used for Immunoglobulin heavy and light chain PCR.

PCR was performed from amplified cDNA templates from RNA extracted from sorted B cells from the spleens of immunised animals. Forward primers for heavy and light chain amplification were designed by family specific alignment of the functional primers from IMGT [18]. Reverse primers were modified from [19]

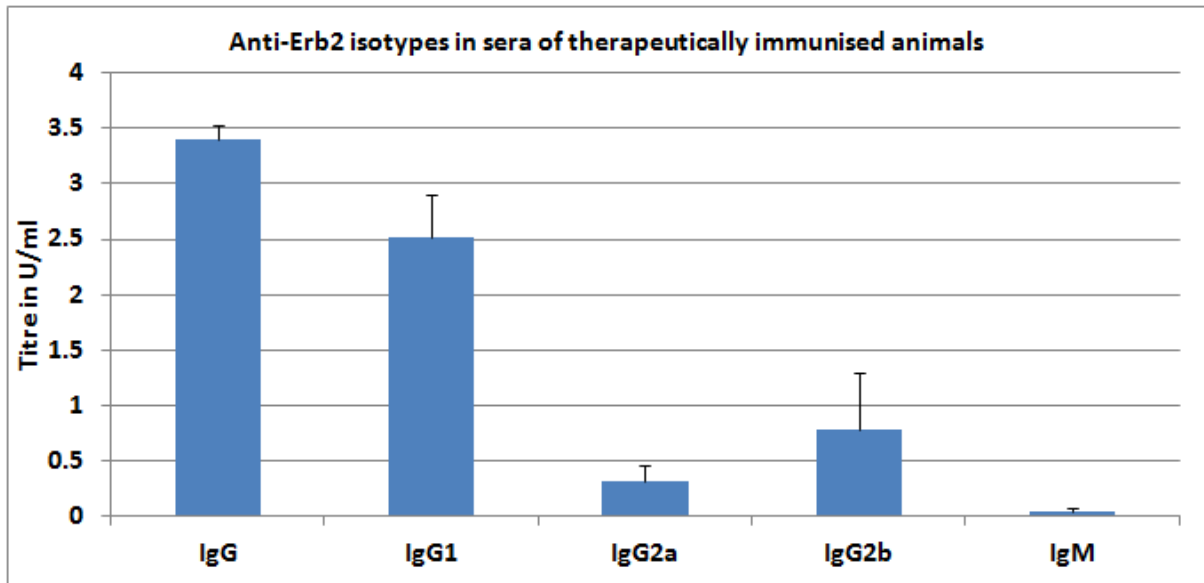


Figure S1. **Anti-ErbB2 antibody titre and isotype in animals immunised therapeutically with ErbB2-P30.** Groups of animals were immunised with ErbB-2-P30 as soon as they had measurable tumours (average 2.5 mm). All of the ErbB2-P30 immunised animals showed high titres of anti-ErbB2. IgG1 was significantly higher ($p < .005$) compared with IgG2a at the age of 16 weeks, similar to the isotype profile of prophylactically immunised mice.