

Additional File 1

Supplemental materials for

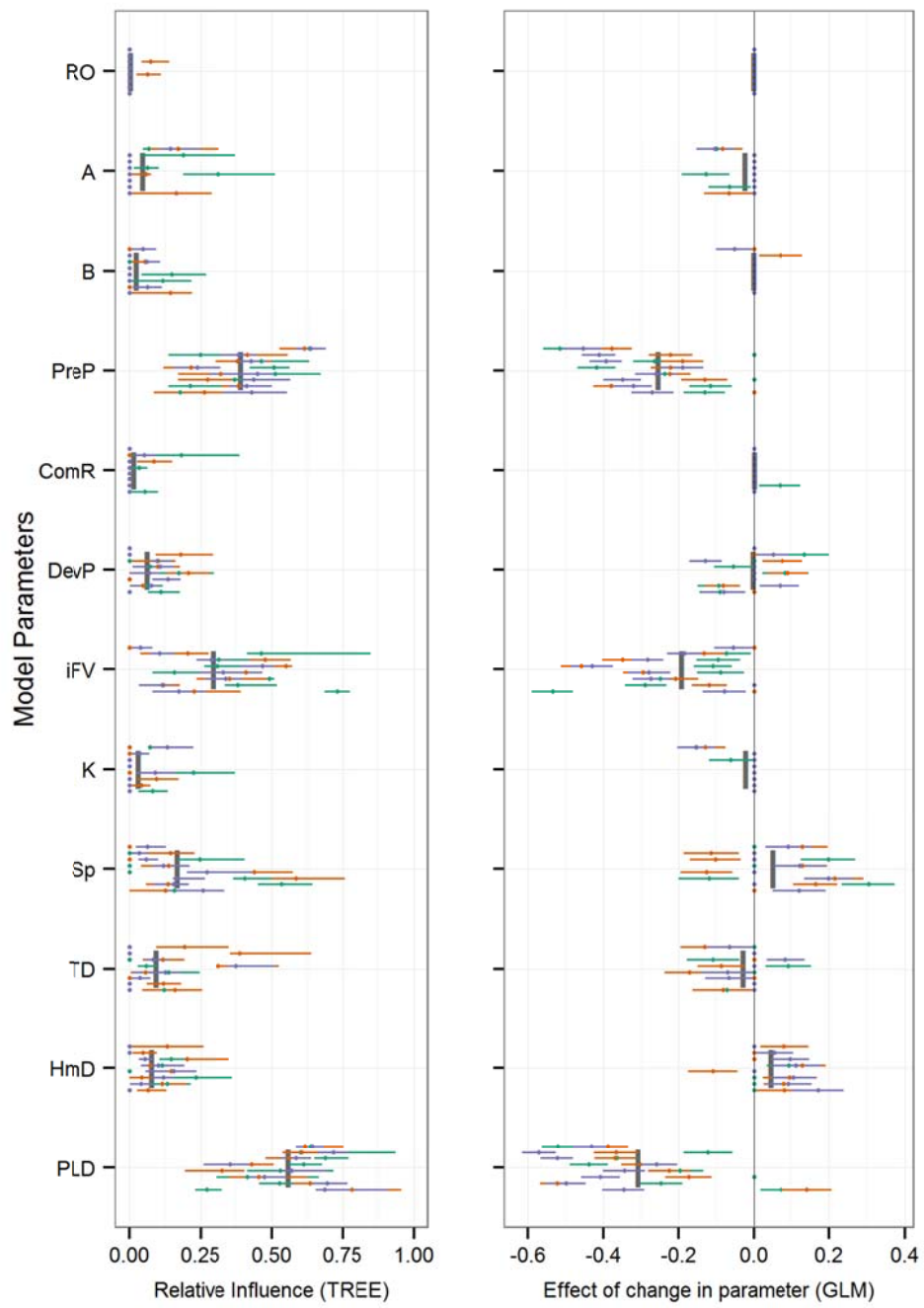
Identifying the key biophysical drivers, connectivity outcomes, and metapopulation consequences of larval dispersal in the sea

Eric A Treml^{1*}, John R Ford¹, Kerry P Black¹, Stephen E Swearer¹

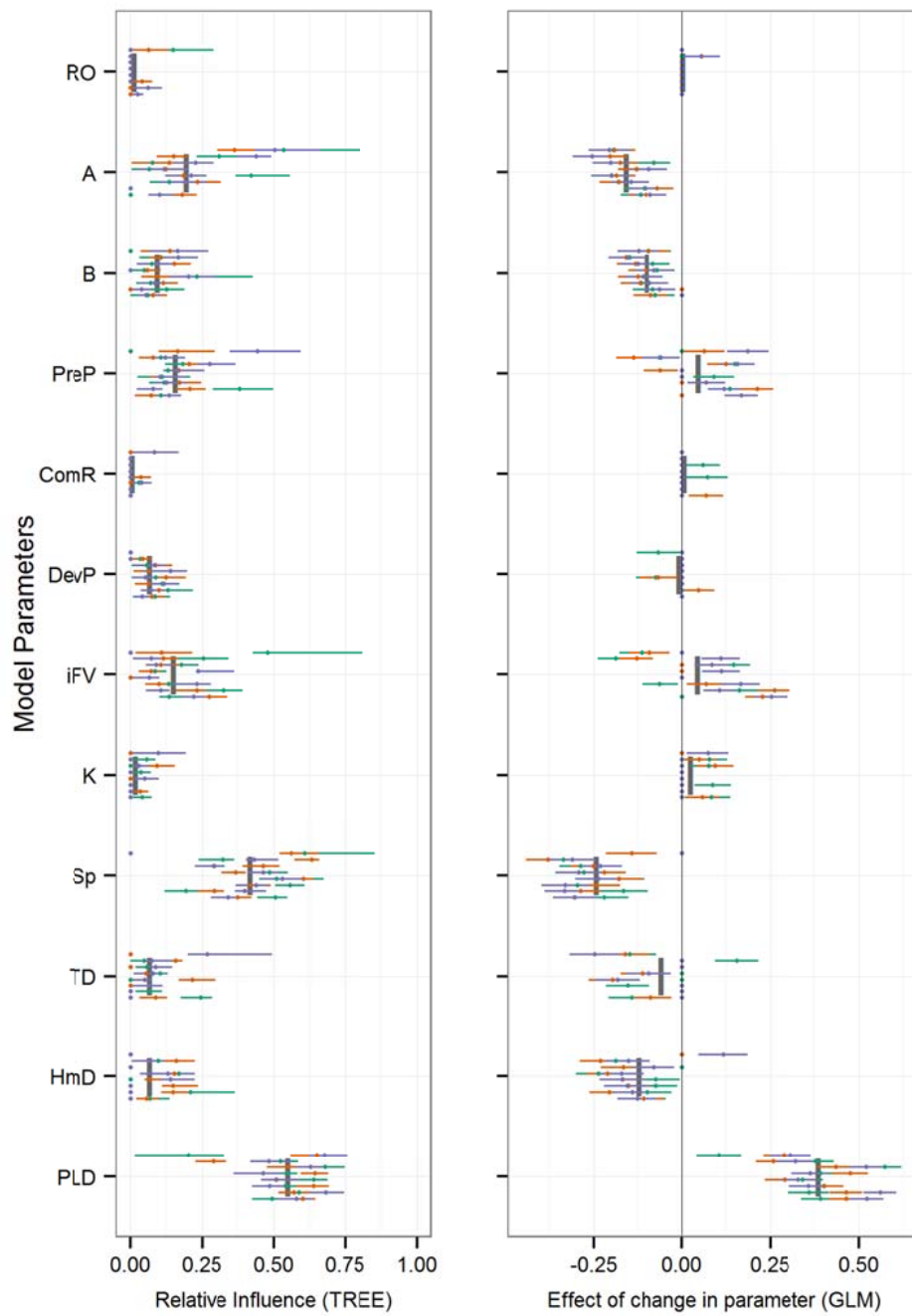
1. School of BioSciences, University of Melbourne, Parkville, Victoria 3010, Australia.

Figure S1. Sensitivity results for select output parameters. Two-panel plots of the influence of model parameters (y-axis) on remaining model output. The regression tree GSA relative influence (left) and generalized linear regression beta coefficients (right) are plotted for all reefs (individual horizontal bars spread vertically in each parameter's row) and release times (unique colours within each reef's horizontal bar). Parameter means are shown as grey vertical bars.

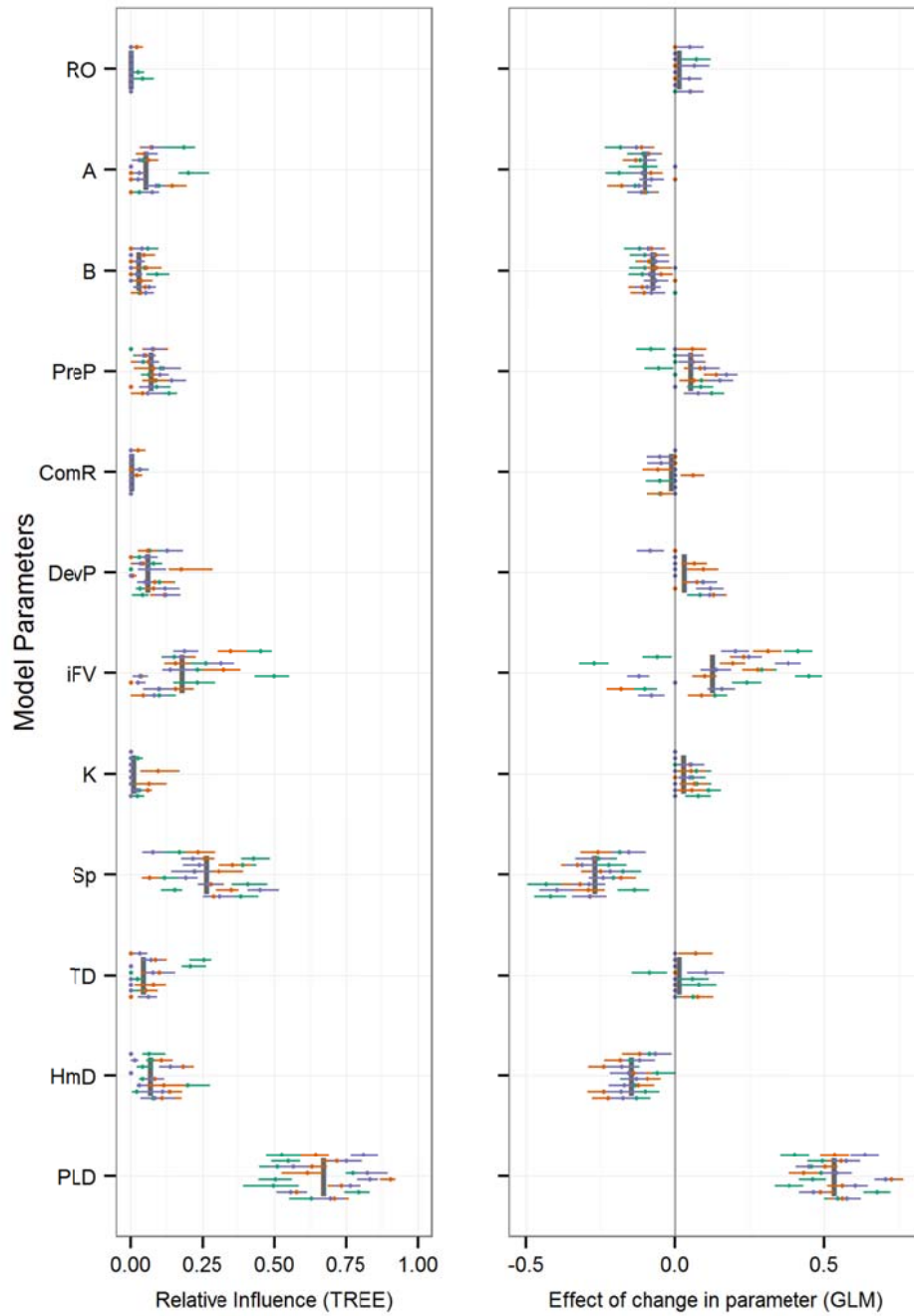
Self Recruitment (SR)



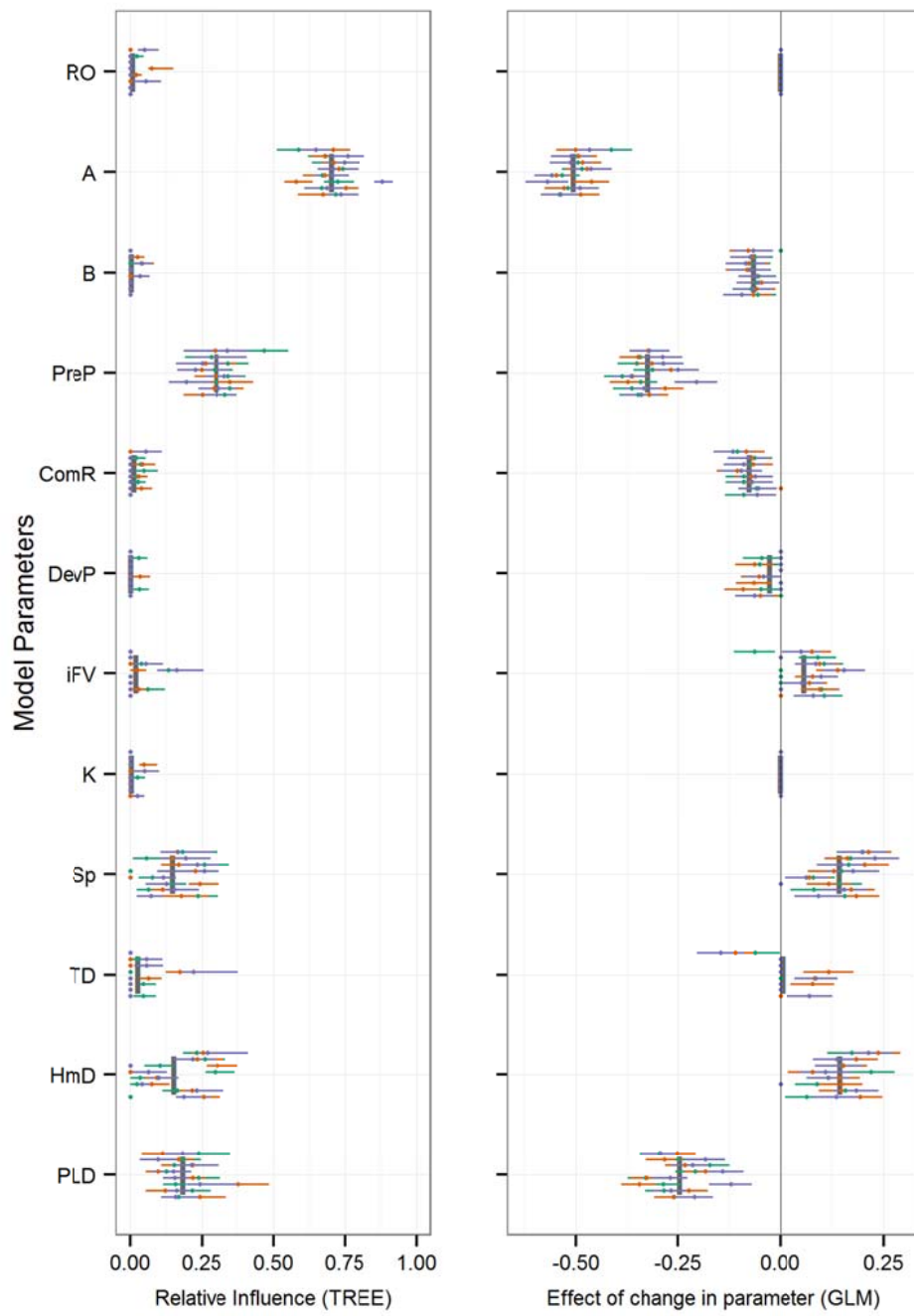
Settler Diversity (H')



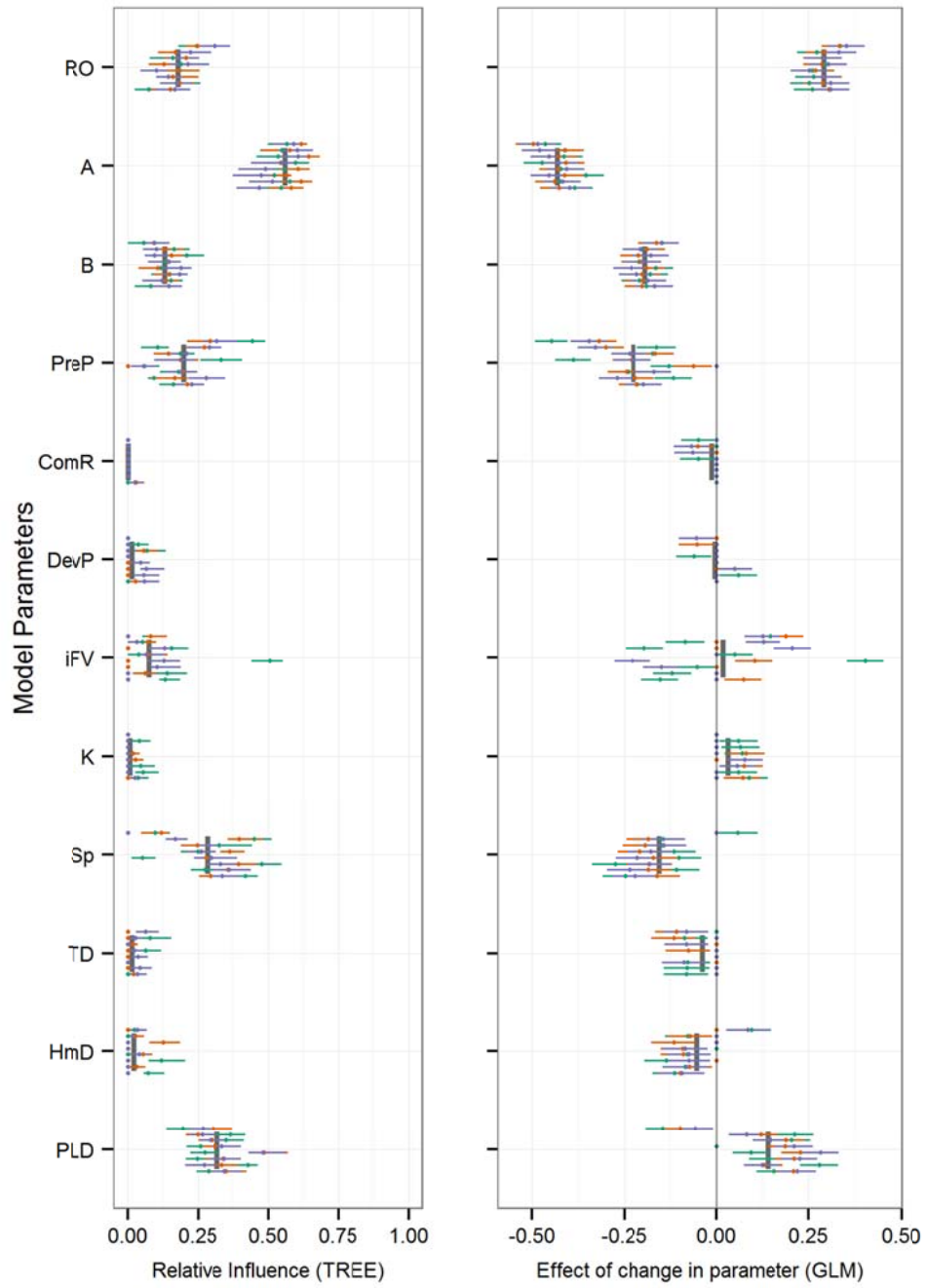
Maximum Geographic Distance (mxG)



Successful Settlers (S)



Downstream Connections (dC)



Metapopulation Capacity (λ_{max})

