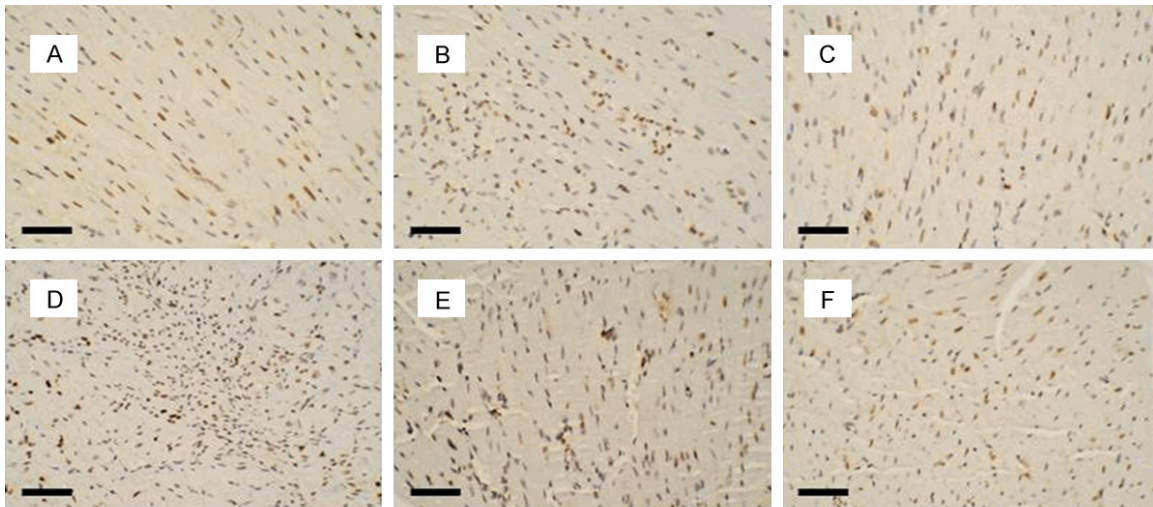


## mERa modulating cardiac repair by BM c-kit<sup>+</sup> cells

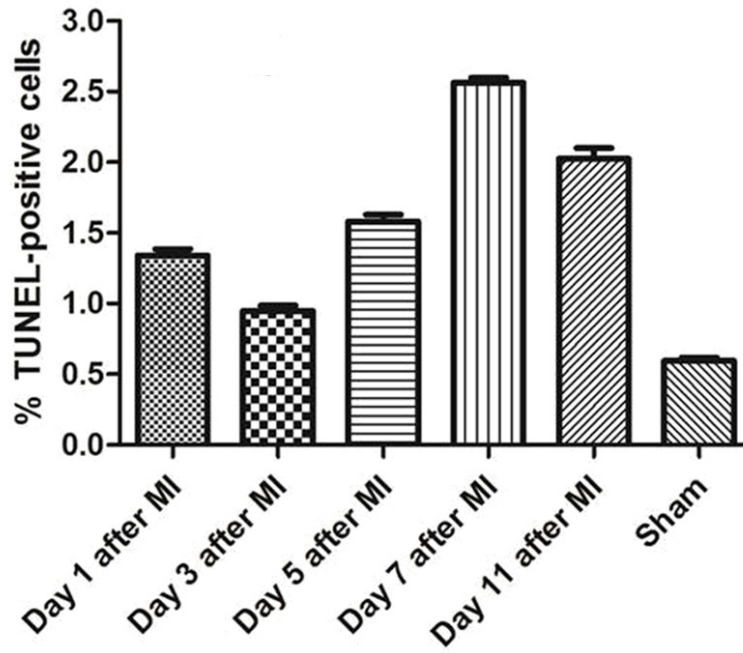
**Supplementary Table 1.** Oligonucleotide primers used for gene expression analysis by real-time PCR

Gene	Primer sequences (5'-3')	Location
Gapdh	Fwd: TGTGTCCGTCGTGGATCTGA	761-910
	Rev: TTGCTGTTGAAGTCGCAGGAG	
ERa	Fwd: ACATGTTGCTGGCTACGTCA	1470-1798
	Rev: GGGCACAACGTTCTTGCAAT	
ERβ	Fwd: AATGTGCTAGTGAGCCGTCC	1239-1503
	Rev: CCTCATCCCTGTCCAGAACG	
Gata4	Fwd: CGGAAGCCCAAGAACCTGAATA	1562 -1659
	Rev: TTGCTGGAGTTACCGCTGGAG	
Tbx5	Fwd: AAGTCCGAAGTGGGGTCAC	10-433
	Rev: GGAAGACGTGGGTGCAAAC	
Ki67	Fwd: CCTGCCCGACCCTACAAAAT	2248-2560
	Rev: TCCGCCGTCTTAAGGTAGGA	
Tbx3	Fwd: GAGGCCAAGGAAC TTGGGA	1669-2022
	Rev: GCTTGGGAAGGCCAAAGTAA	
Akt	Fwd: CTGGAGGACAACGACTACGG	1331-1762
	Rev: CTCACTGTCCACACTCCAT	
Notch	Fwd: GCTCCGAGGAGATCAACGAG	3803-4070
	Rev: TTGACATCACCTCACACCG	

mERa modulating cardiac repair by BM c-kit<sup>+</sup> cells

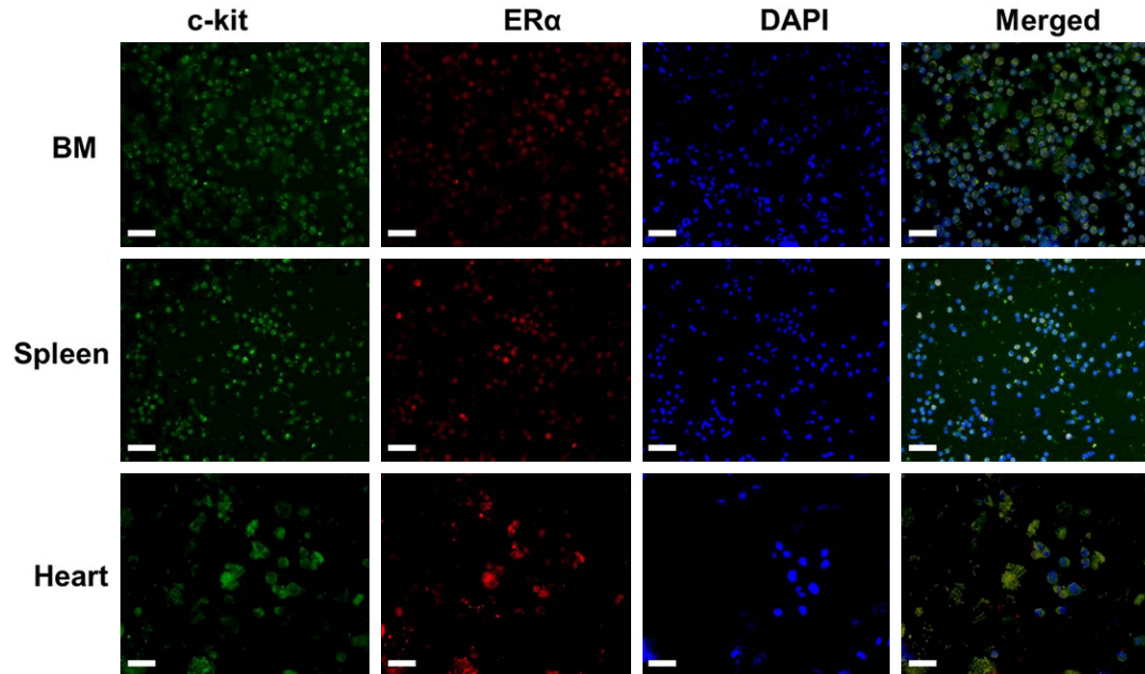


G



**Supplementary Figure 1.** TUNEL staining for heart sections from mouse in different days of AMI and sham mouse (A-E) TUNEL staining for heart sections from mouse in day 2, 3, 5, 7 and 11 after MI; (F) TUNEL staining for heart sections from Sham-operated mouse; (G) Analysis of TUNEL positive cells in heart sections after AMI. Scale bar =50 μm.

mERa modulating cardiac repair by BM c-kit<sup>+</sup> cells



**Supplementary Figure 2.** Immunofluorescence staining images of c-kit and ERα in BM, Spleen and heart after 7 days of AMI. After MI, ERα expressions were detected in BM, spleen and heart, especially in c-kit<sup>+</sup> cells. Scale bar =25 μm.