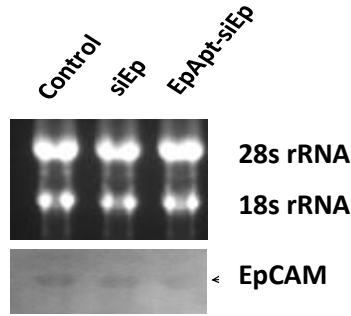


Fig 2A supporting image



EpCAM antisense oligo probed and developed by autoradiography

MCF7 total RNA samples run on formaldehyde agarose gel

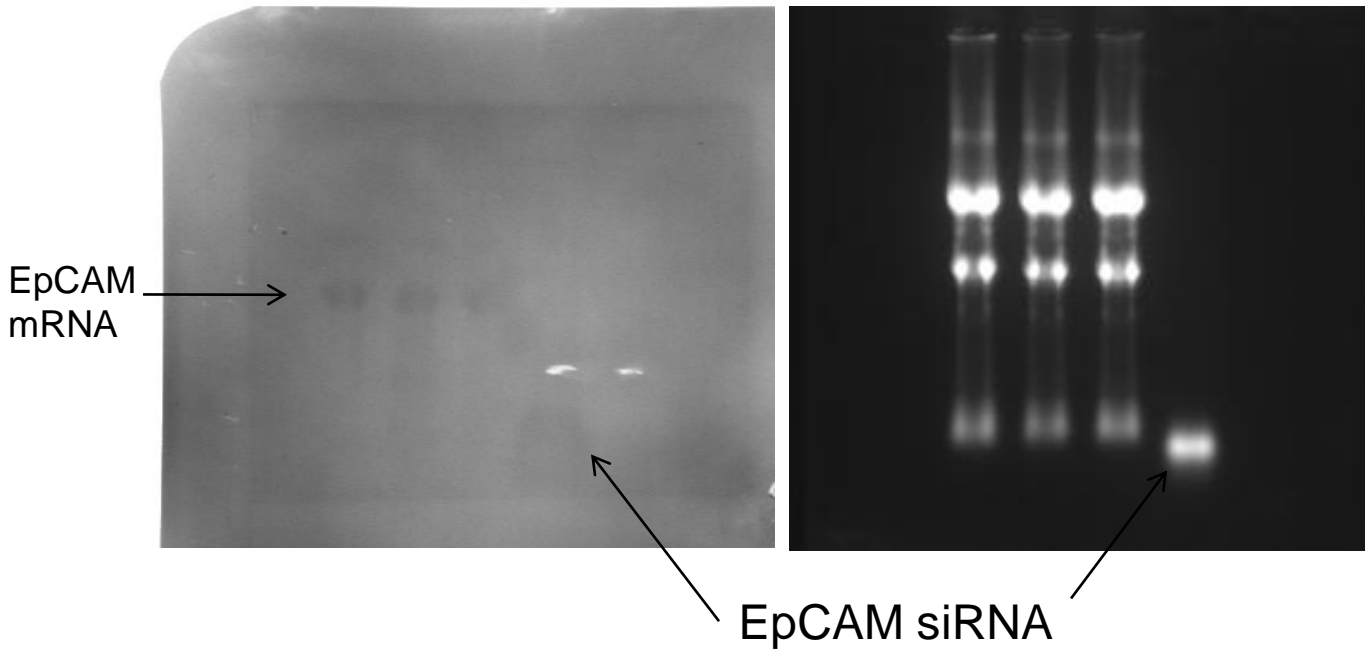


Fig 2C supporting image

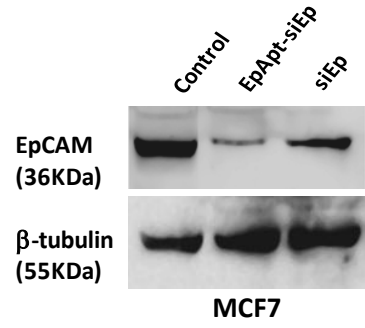
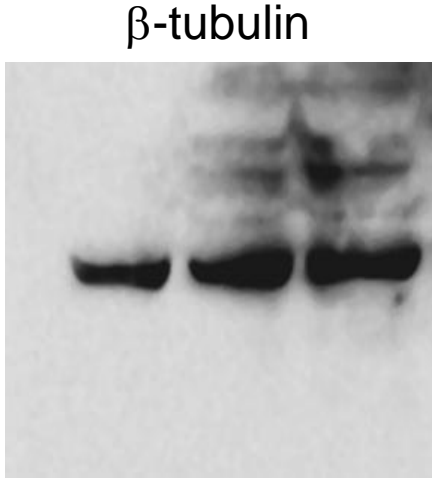
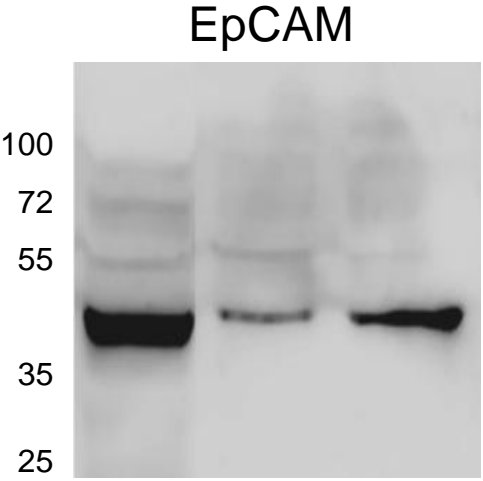
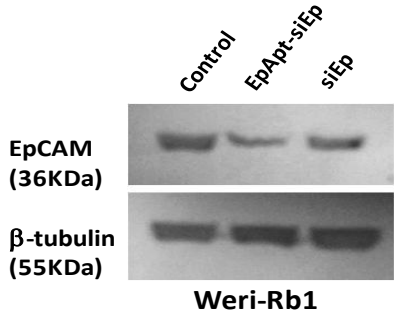
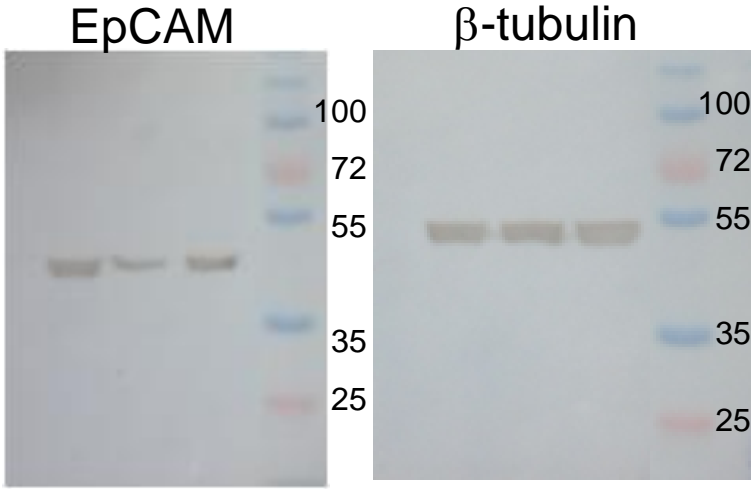
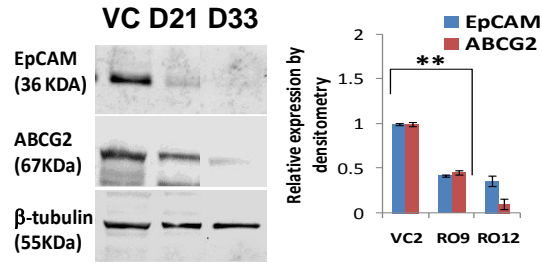


Fig 4D supporting image



Immunoblot assembled showing the results used in blue box (samples in graph showing the actual label in the uncropped image)

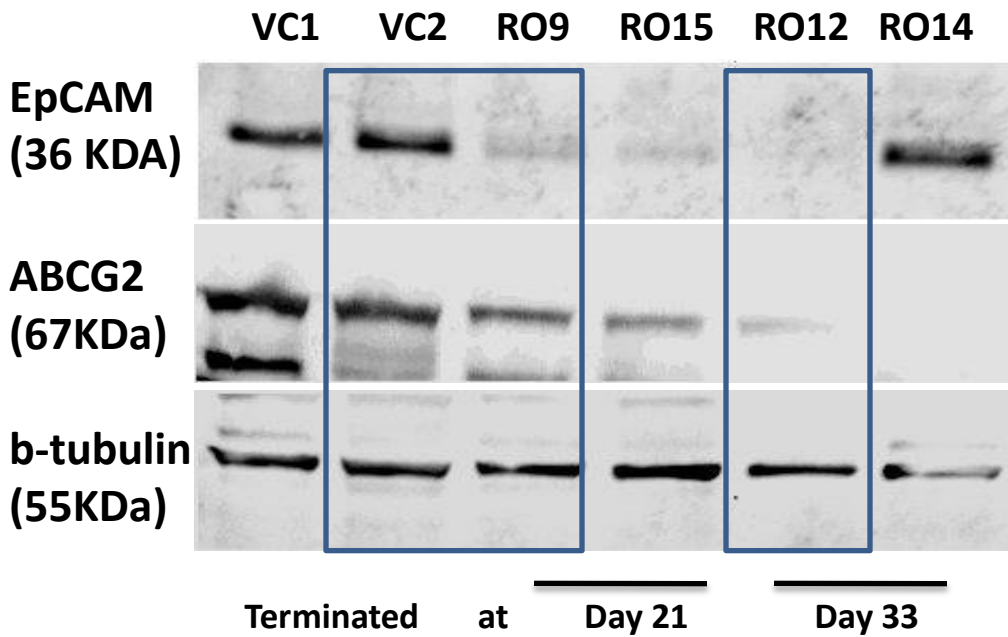


Fig 4B & C supporting image

