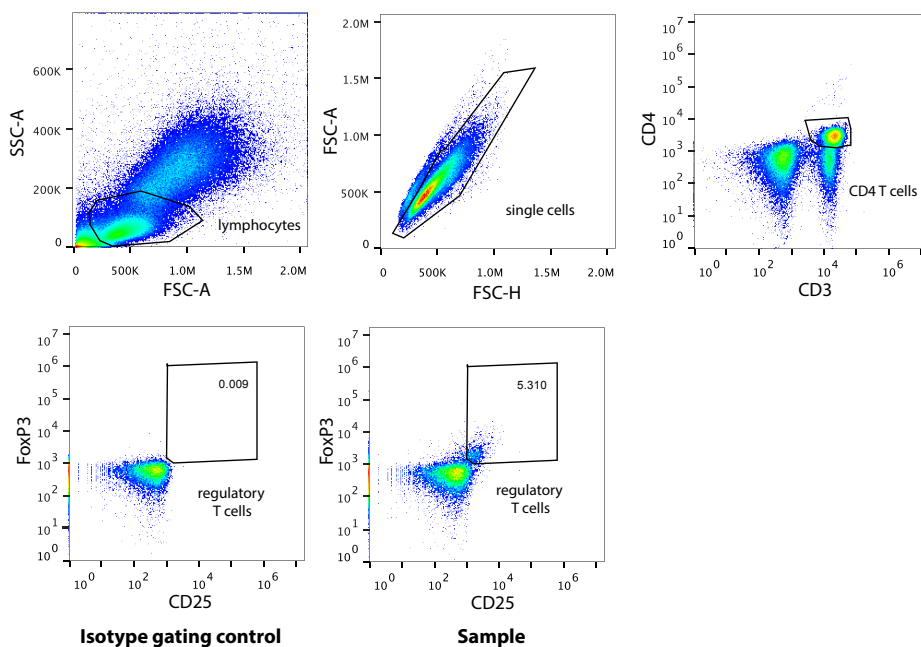
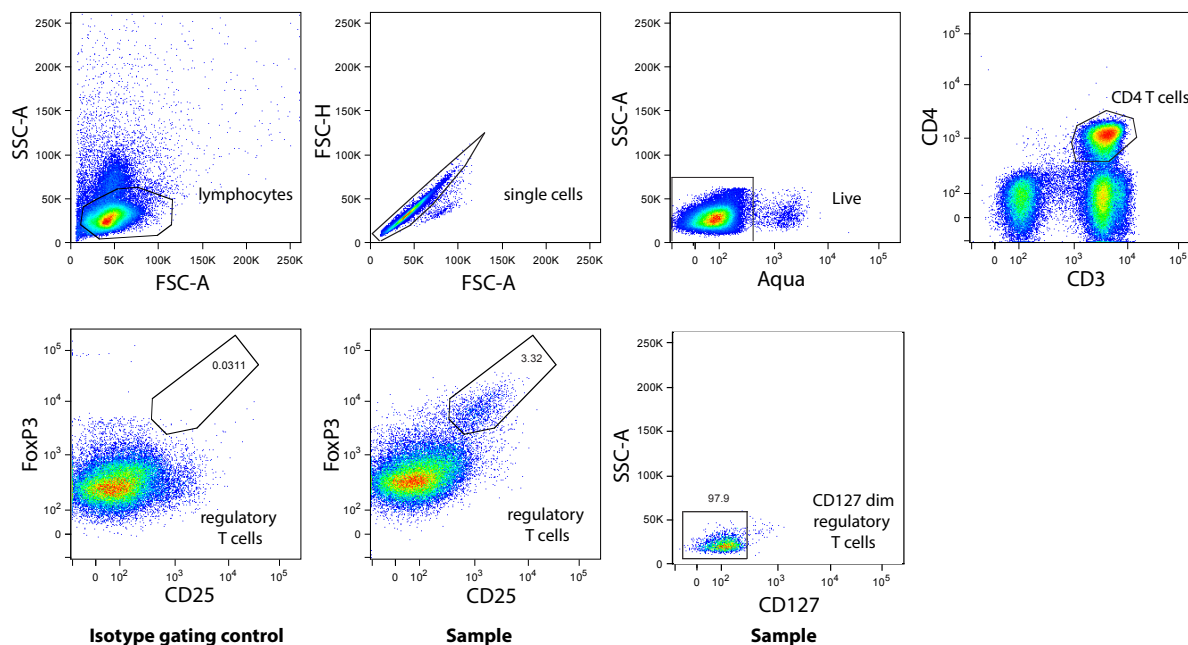


**A Gating strategy for 2yo cohort: Whole blood cells staining, Acuri flow cytometer**



**B Gating strategy for 4yo cohort: PBMC staining, LSRII flow cytometer**



**S1 Figure: Gating strategy for regulatory T cells**

Frequencies of regulatory T cells were enumerated by staining whole blood samples (2yo cohort) or frozen PBMC samples (4yo cohort). **A.** For 2yo, whole blood was stained and cells analyzed on four-color Accuri flow-cytometer. **B.** For 4yo samples, PBMCs were thawed and stained and analyzed on a LSRII.

FoxP3+CD25+ regulatory T cells were further gated on CD127 dim to enumerate regulatory T cells as FoxP3+CD25+CD127dim. This gating strategy was also used for PRISM samples. See also Figure 1a and 1b.