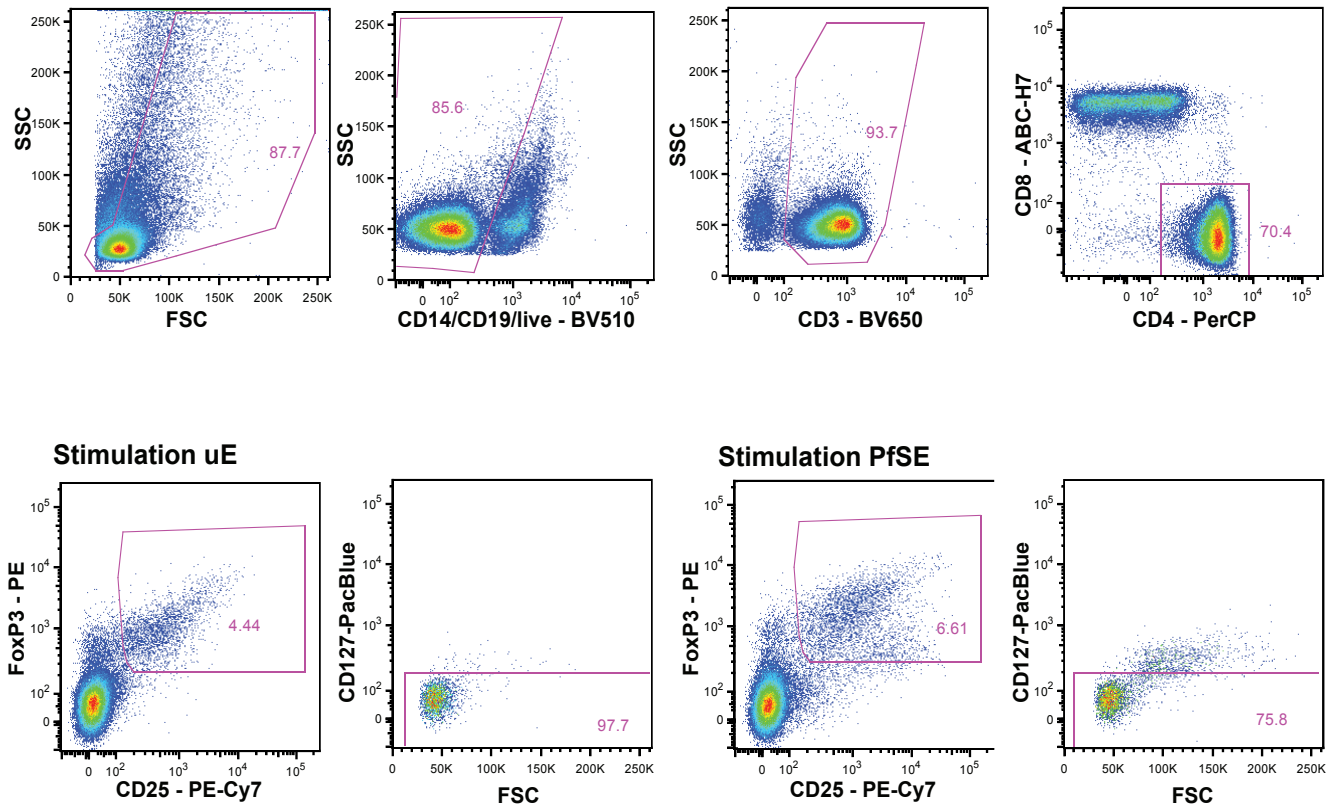
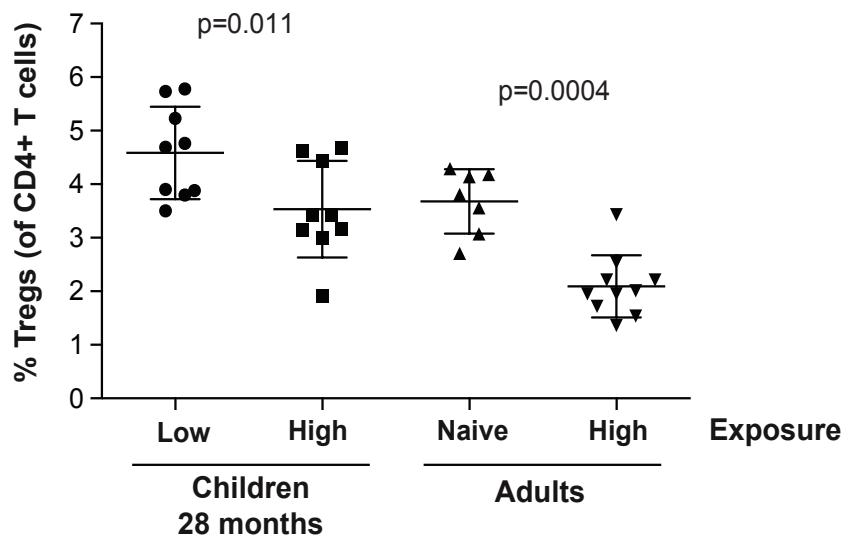
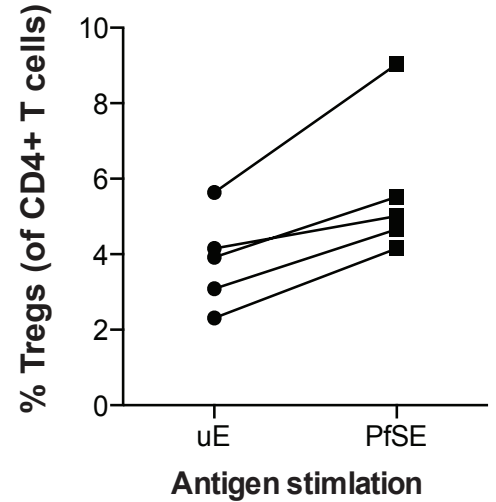


A**B****C****S4 Figure: Regulatory T cell induction assays**

A. PBMCs were incubated with *P. falciparum* schizont extract (PfSE), or uninfected RBC extract (uE) for 7 days, then the frequency of FoxP3+CD25+CD127^{low} cells among CD4+ T cells was measured. **B.** *Ex vivo* frequencies of FoxP3+CD25+CD127^{low} regulatory T cells in samples used for stimulation assays. **C.** In PBMCs from malaria-naïve adults, incubation with PfSE resulted in increased frequencies of T_{regs} compared to PBMCs cultured with uE. See also Figure 5a and 5b.