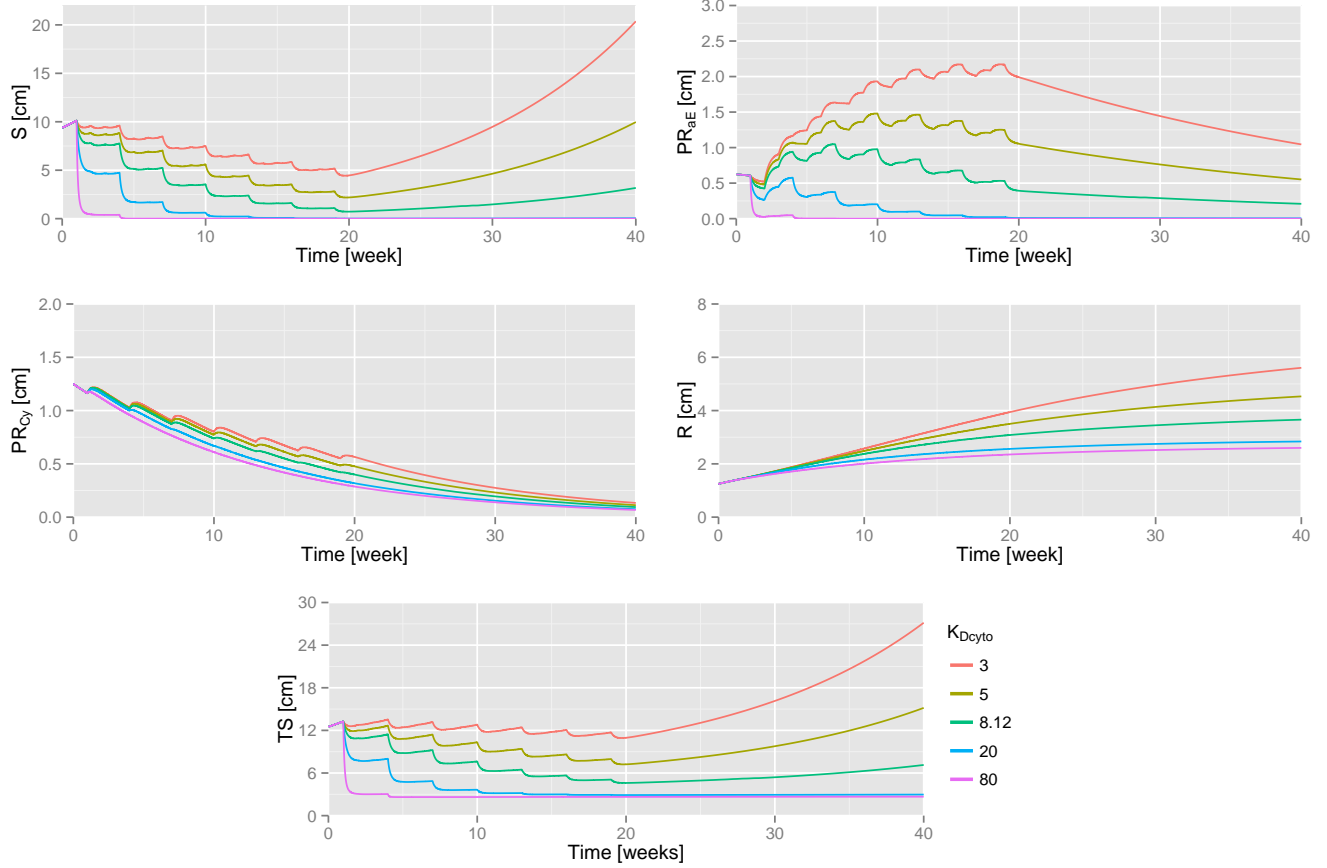


Overview of the system dynamics resulting from the $K_{D_{cyto}}$ parameter variation



Supplementary Figure S2: Tumor dynamics of each defined cell subgroup is shown for different $K_{D_{cyto}}$ values. In particular, in addition to a considerable amount of surviving sensitive cells S , a reduced cytotoxic drug effect increases the amount of partially-resistant cells PR_{aE} , first, and fully-resistant cells R , afterwards. A different behavior can be observed for increasing $K_{D_{cyto}}$ values.

The other parameter values can be found in Supplementary Table S1. A similar administration schedule as that one reported in Supplementary Figure S1 has been considered.