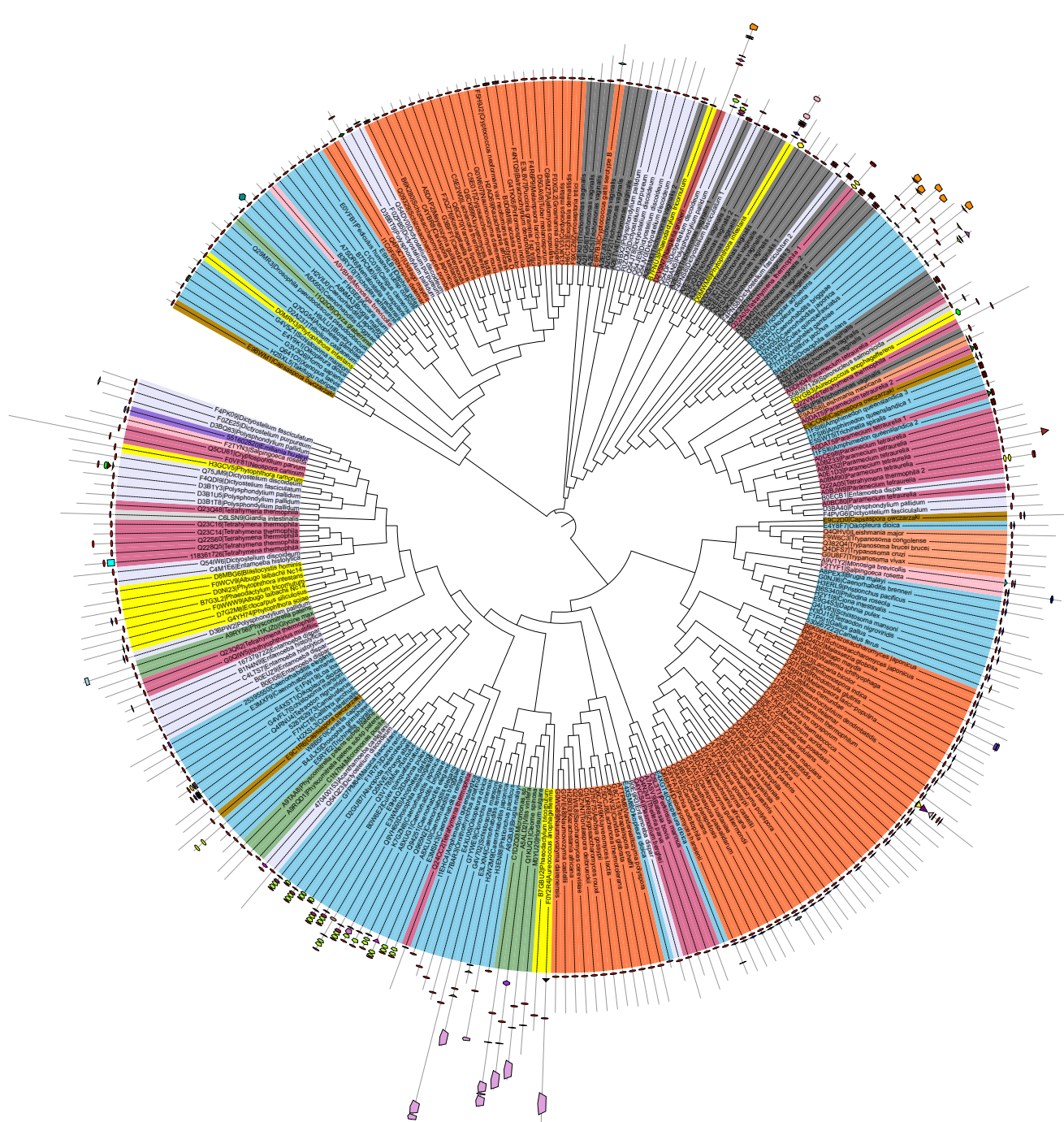


Protein domains



- | | | | |
|--|-----------------|--|-----------------|
| | Telomerase_RBD | | zf-UBR |
| | PIG-U | | ClpS |
| | PhyH | | SF3b1 |
| | PHD | | ELL |
| | DUF2013 | | Laminin_G_3 |
| | zf-RING_5 | | Ribosomal_S8 |
| | ZZ | | ubiquitin |
| | RVT_1 | | SPRY |
| | zf-C3HC4 | | Ribosomal_L32e |
| | zf-RING_2 | | Cation_ATPase_N |
| | Pkinase | | DNA_PPF |
| | zf-RanBP | | Acyl-CoA_dh_1 |
| | Sirohm_synth_C | | Methyltransf_16 |
| | Sirohm_synth_M | | Methyltransf_21 |
| | UCH | | Acyl-CoA_dh_M |
| | ACOX | | Cation_ATPase_C |
| | NAD_binding_7 | | PABP |
| | Cyclin_N | | DOT1 |
| | Thioredoxin | | Astacin |
| | E3_UbLigase_R4 | | BPL_LplA_LipB |
| | E3_UbLigase_EDD | | UBA |
| | Kelch_1 | | Hydrolase |
| | RRM_1 | | Oxysterol_BP |
| | RasGAP | | OTU |
| | RRM_3 | | E1-E2_ATPase |
| | Beta_helix | | DUF4583 |
| | NosD | | Asp |
| | Pectate_lyase_3 | | DUF290 |
| | F-box-like | | LCM |
| | HECT | | UCR_UQCRX_QCR9 |
| | | | La |

Taxa colors

- | | | | |
|--|---------------|--|------------------|
| | Amoebozoa | | Heterolobosea |
| | Alveolata | | Viridaeplantae |
| | Diplomonadida | | Stramenopiles |
| | Parabasalia | | Fungi |
| | Euglenozoa | | Choanoflagellida |
| | Metazoa | | Haptophyceae |
| | Ichthyosporea | | |